

OIL CONSERVATION DIVISION

August 16, 1995

*Hinkle, Cox, Eaton, Coffield & Hensley P.L.L.C.*  
*Attn: James Bruce*  
*P. O. Box 2068*  
*Santa Fe, New Mexico 87504-2068*

---

*Exxon Corporation*  
*Attn: Alex Correa*  
*P. O. Box 1600*  
*Midland, Texas 79702-1600*

*Re: Case Nos. 11,297 and 11,298, Applications of Exxon Corporation for statutory unitization, to initiate a waterflood project, for "EOR" qualification, and for 18 unorthodox oil well locations, Eddy County, New Mexico.*

---

*Administrative request for four unorthodox oil well locations in Sections 31 and 32, Township 20 South, Range 28 East, NMPM, Eddy County, New Mexico.*

*Dear Messrs. Bruce and Correa:*

*Exxon's application for administrative approval by letter dated July 31, 1995 for four unorthodox oil well locations for the purpose of completing an efficient production/injection pattern within the proposed Avalon Delaware Unit Waterflood Project in Eddy County, New Mexico, which was the subject of controversy in consolidated Cases 11,297 and 11,298 heard in Hobbs, New Mexico on June 29, 1995, is being returned to you at this time.*

*These four wells were in part the subject of said controversial hearing, an order is still pending in this matter and should be issued shortly. Any action taken by the Division prior to the issuance of a decision in Case Nos. 11,297 and 11,298 on these four wells would be most inappropriate and could be construed as an attempt to circumvent the hearing process and to influence final judgement.*

*James Bruce / Alex Correa*  
*August 16, 1995*  
*Page 2*

---

*Should there be any need for further questions or comments concerning this matter, Mr. Bruce may address them in a letter with appropriate notice to the other two parties in these proceedings.*

*Sincerely,*

A handwritten signature in black ink, appearing to read "Michael E. Stogner", with a large, sweeping flourish at the end.

*Michael E. Stogner*  
*Chief Hearing Officer/Engineer*

*cc: Oil Conservation Division - Artesia*  
*U. S. Bureau of Land Management - Carlsbad*  
*Case File 11,297*  
*Case File 11,298*  
*William J. LeMay - OCD Director, Santa Fe*  
*Rand L. Carroll - Counsel, OCD, Santa Fe*  
*Yates Petroleum Corporation, c/o William F. Carr - Santa Fe*  
*Premier Oil & Gas, Inc., c/o W. Thomas Kellahin - Santa Fe*

**EXXON COMPANY, U.S.A.**

POST OFFICE BOX 1600 • MIDLAND, TEXAS 79702-1600

'95 JUL 27 AM 8 52

July 27, 1995

MIDLAND PRODUCTION ORGANIZATION  
OPERATIONS INTEGRITY

Proposed Avalon (Delaware) Unit  
Unorthodox Locations  
Sections 31 & 32, T20S, R28E  
Eddy County, New Mexico

Mr. William J. LeMay  
New Mexico Oil Conservation Division  
2040 South Pacheco  
Santa Fe, New Mexico 87505

Dear Mr. LeMay:

Exxon Corp. requests Administrative Approval of the Unorthodox Locations listed below in the Proposed Avalon Delaware Unit.

Well #	Location	Qtr./Qtr.	Unit Letter
2420	32-20S-28E	SWSW	L
2220	32-20S-28E	SWNW	E
2216	31-20S-28E	SWNE	G
2014	31-20S-28E	SENE	F

These wells are necessary "to permit the completion of an efficient production and injection pattern with a secondary recovery or pressure maintenance project" and are not "closer than 330 feet to the outer boundary of the lease or the unitized area, nor closer than 10 feet to any quarter-quarter section line or subdivision inner boundary" (Rule 104,F,1).

Exxon Corp. will operate the Unit and is also the offset operator of the existing lease and has no objections to these unorthodox locations. Copies of the following are attached for each well: C-101, C-102, Federal Form 3160-3 (for Federal wells). Approval of this application will allow the permits to drill to be released before unitization. A space is provided below for your signature. If you have any questions, please call me at (915) 688-6782.

Sincerely,



Alex M. Correa

Signature:

William J. LeMay

Title:

Date:

AMC:mym  
Attachments  
Avalon.ltr

District I  
PO Box 1980, Hobbs, NM 88241-1980  
District II  
PO Drawer DD, Aztec, NM 88211-0719  
District III  
1000 Rio Brazos Rd., Aztec, NM 87410  
District IV  
PO Box 2088, Santa Fe, NM 87504-2088

State of New Mexico  
Energy, Minerals & Natural Resources Department

OIL CONSERVATION DIVISION  
PO Box 2088  
Santa Fe, NM 87504-2088

Form C-101  
Revised February 10, 1994

Instructions on back  
Submit to Appropriate District Office  
State Lease - 6 Copies  
Fee Lease - 5 Copies

☐ AMENDED REPORT

APPLICATION FOR PERMIT TO DRILL, RE-ENTER, DEEPEN, PLUGBACK, OR ADD A ZONE

Operator Name and Address: Exxon Corp. P.O. Box 1600, ML-14 Midland, Texas 79702		OGRED Number 007673
		A/R Number 30 - 0
Property Code	Property Name Avalon (Delaware) Unit	Well No. 2420

Surface Location

UL or lot no.	Section	Township	Range	Lot Idn	Feet from the	North/South line	Feet from the	East/West line	County
L	32	20S	28E		1333'	South	1107	West	Eddy

Proposed Bottom Hole Location If Different From Surface

UL or lot no.	Section	Township	Range	Lot Idn	Feet from the	North/South line	Feet from the	East/West line	County

Proposed Pool 1 Avalon Delaware 3715	Proposed Pool 2
---	-----------------

Work Type Code N	Well Type Code O	Cable/Battery R	Lease Type Code S	Ground Level Elevation 3205'
Multiple NO	Proposed Depth 4,500'	Formation Delaware	Coastline Unknown	Spud Date ASAP

Proposed Casing and Cement Program

Hole Size	Casing Size	Casing weight/foot	Setting Depth	Seals of Cement	Estimate TOC
20"	16"	Line Pipe	40'	40 cu. ft.	Surface
14 3/4"	10 3/4"	40.4#/K-55	600'	350 cu. ft.	Surface
9 1/2"	7 5/8"	26.4#/K-55	2,540'	500 cu. ft.	Surface
6 3/4"	4 1/2"	4.56*	**	300 cu. ft.	Lnr. Top

\* Describe the proposed program. If this application is to DEEPEN or PLUG BACK give the data on the present productive zone and proposed new productive zone. Describe the blowout prevention program, if any. Use additional sheets if necessary.

- \* 4 1/2" prod. string is fiberglass.
- \*\* 4 1/2" prod. string from 2,300' to TD.
- C-102 is attached.
- Copy of request for Administrative Approval of Unorthodox Locations is attached.

I hereby certify that the information given above is true and correct to the best of my knowledge and belief.

Signature: *Alex M. Correa*  
Printed name: Alex M. Correa  
Title: Sr. Regulatory Specialist

OIL CONSERVATION DIVISION

Approved by:  
Title:  
Approval Date:  
Expiration Date:

District I  
PO Box 1980, Hobbs, NM 88241-1980

State of New Mexico  
Energy, Minerals & Natural Resources Department

Form C-102  
Revised February 10, 1994  
Submit to Appropriate District Office  
State Lease - 4 Copies  
Fee Lease - 3 Copies

District II  
PO Drawer DD, Artesia, NM 88211-0719

OIL CONSERVATION DIVISION

District III  
1000 Rio Brasos Rd., Aztec, NM 87410

PO Box 2088

Santa Fe, NM 87504-2088

District IV  
PO Box 2088, Santa Fe, NM 87504-2088

☐ AMENDED REPORT

WELL LOCATION AND ACREAGE DEDICATION PLAT

API Number	Pool Code 03715	Pool Name AVALON DELAWARE 3715
Property Code	Property Name AVALON (DELAWARE) UNIT	Well Number 2420
OGRID No. 007673	Operator Name Exxon Corp.	Elevation 3205

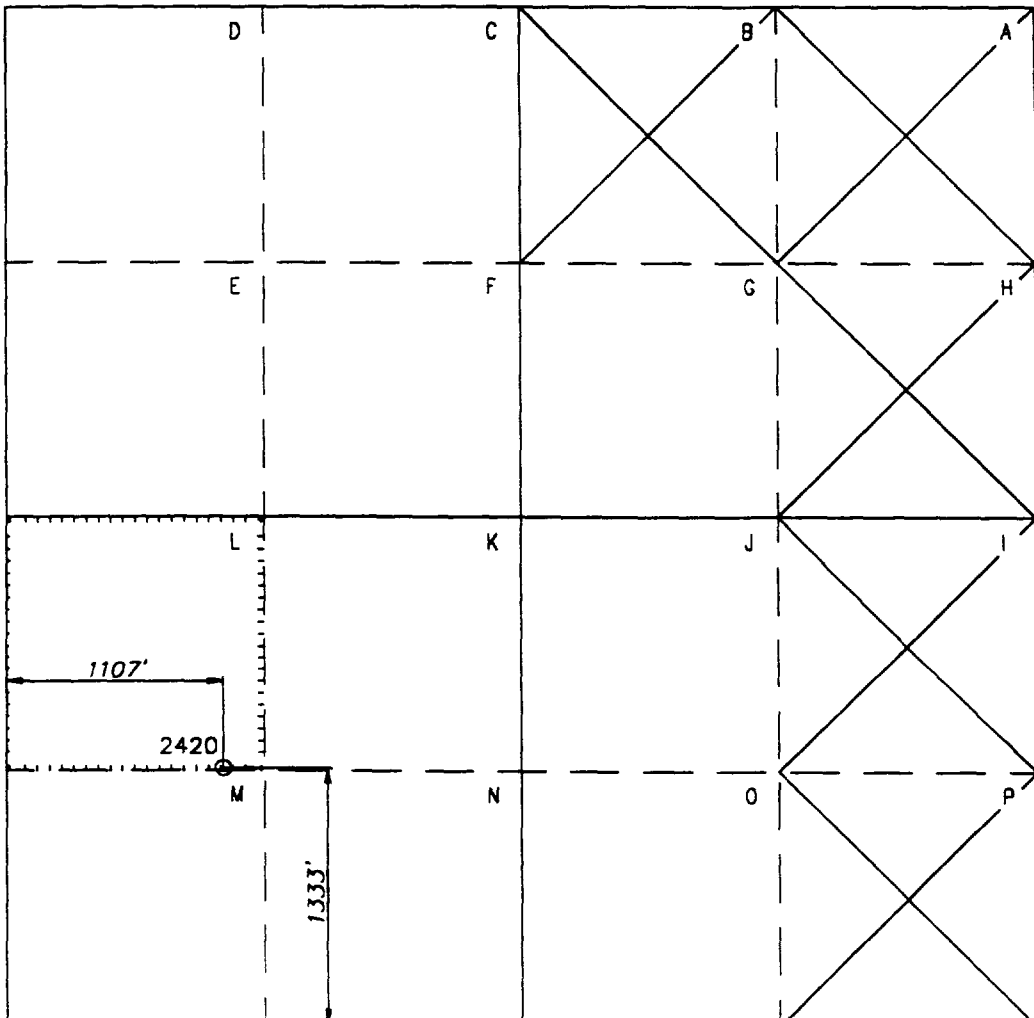
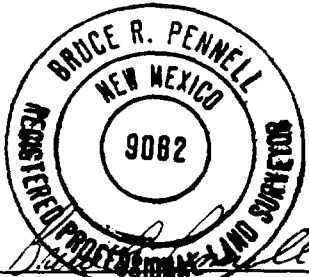
Surface Location

UL or lot no. L	Section 32	Township 20S	Range 28E	Lot Idn	Feet from the 1333'	North/South line SOUTH	Feet from the 1107'	East/West line WEST	County EDDY
--------------------	---------------	-----------------	--------------	---------	------------------------	---------------------------	------------------------	------------------------	----------------

Bottom Hole Location If Different From Surface

UL or lot no.	Section	Township	Range	Lot Idn	Feet from the	North/South line	Feet from the	East/West line	County
Dedicated Acres 40	Joint or Infill	Consolidation Code	Order No.						

NO ALLOWABLE WILL BE ASSIGNED TO THIS COMPLETION UNIT. ALL INTERESTS HAVE BEEN CONSOLIDATED  
OR A NON-STANDARD UNIT HAS BEEN APPROVED BY THE DIVISION

	<p><b>OPERATOR CERTIFICATION</b></p> <p>I hereby certify that the information contained herein is true and complete to the best of my knowledge and belief.</p> <p>Signature _____</p> <p>Printed Name C.H. Harper</p> <p>Title Permits Supervisor</p> <p>Date _____</p> <p><b>SURVEYOR CERTIFICATION</b></p> <p>I hereby certify that the well location shown on this plat was plotted from field notes of actual surveys made by me or under my supervision, and that the same is true and correct to the best of my belief.</p> <p>Date of Survey 6/8/95</p> <p>Signature and Seal of Professional Surveyor.</p> <p></p> <p>Certificate Number 9082</p>
--	---

Distance to nearest Town

Drawn By

Date

Drawing File Name

District I  
PO Box 1980, Hobbs, NM 88241-1980  
District II  
PO Drawer DD, Aztec, NM 88211-0719  
District III  
1000 Rio Brazos Rd., Aztec, NM 87410  
District IV  
PO Box 2088, Santa Fe, NM 87504-2088

State of New Mexico  
Energy, Minerals & Natural Resources Department

OIL CONSERVATION DIVISION  
PO Box 2088  
Santa Fe, NM 87504-2088

Form C-101  
Revised February 10, 1994  
Instructions on back  
Submit to Appropriate District Office  
State Lease - 6 Copies  
Fee Lease - 5 Copies

☐ AMENDED REPORT

APPLICATION FOR PERMIT TO DRILL, RE-ENTER, DEEPEN, PLUGBACK, OR ADD A ZONE

Operator Name and Address: Exxon Corp. P.O. Box 1600, ML-14 Midland, Texas 79702		OGRID Number 007673
		API Number 30 - 0
Property Code	Property Name Avalon (Delaware) Unit	Well No. 2220

Surface Location

UL or lot no.	Section	Township	Range	Lot id#	Feet from the	North/South line	Feet from the	East/West line	County
E	32	20S	28E		2658'	South	1127'	West	Eddy

Proposed Bottom Hole Location if Different From Surface

UL or lot no.	Section	Township	Range	Lot id#	Feet from the	North/South line	Feet from the	East/West line	County

Proposed Pool 1 Avalon Delaware 3715	Proposed Pool 2
---	-----------------

Work Type Code N	Well Type Code 0	Cable/Rotary R	Lease Type Code S	Ground Level Elevation 3208'
Multiple NO	Proposed Depth 4,500'	Formation Delaware	Completion Unknown	Start Date ASAP

Proposed Casing and Cement Program

Hole Size	Casing Size	Casing weight/feet	Setting Depth	Seals of Cement	Estimated TOC
20"	16"	Line Pipe	40'	40 cu. ft.	Surface
14 3/4"	10 3/4"	40.4#/K-55	600'	350 cu. ft.	Surface
9 1/2"	7 5/8"	26.4#/K-55	2,540'	500 cu. ft.	Surface
6 3/4"	4 1/2"	4.56*	**	300 cu. ft.	Lnr. Top

\* Describe the proposed program. If this application is to DEEPEN or PLUG BACK give the data on the present productive zone and proposed non-productive zone. Describe the blowout prevention program, if any. Use additional sheets if necessary.

\* 4 1/2" prod. string is fiberglass.

\*\* 4 1/2" prod. string from 2,300' to TD.

- C-102 is attached.

- Copy of request for Administrative Approval of Unorthodox Locations is attached.

I hereby certify that the information given above is true and complete to the best of my knowledge and belief:

Signature: *Alex M. Correa*

Printed name: Alex M. Correa

Title: Sr. Regulatory Specialist

OIL CONSERVATION DIVISION

Approved by:

Title:

Approval Date:

Expiration Date:

District I  
PO Box 1980, Hobbs, NM 88241-1980

District II  
PO Drawer DD, Artesia, NM 88211-0719

District III  
1000 Rio Brasos Rd., Aztec, NM 87410

District IV  
PO Box 2088, Santa Fe, NM 87504-2088

State of New Mexico  
Energy, Minerals & Natural Resources Department

OIL CONSERVATION DIVISION  
PO Box 2088  
Santa Fe, NM 87504-2088

Form C-102  
Revised February 10, 1994  
Submit to Appropriate District Office  
State Lease - 4 Copies  
Fee Lease - 3 Copies

☐ AMENDED REPORT

WELL LOCATION AND ACREAGE DEDICATION PLAT

API Number	Pool Code 03715	Pool Name AVALON DELAWARE 3715
Property Code	Property Name AVALON (DELAWARE) UNIT	Well Number 2220
GRID No. 007673	Operator Name Exxon Corp.	Elevation 3208

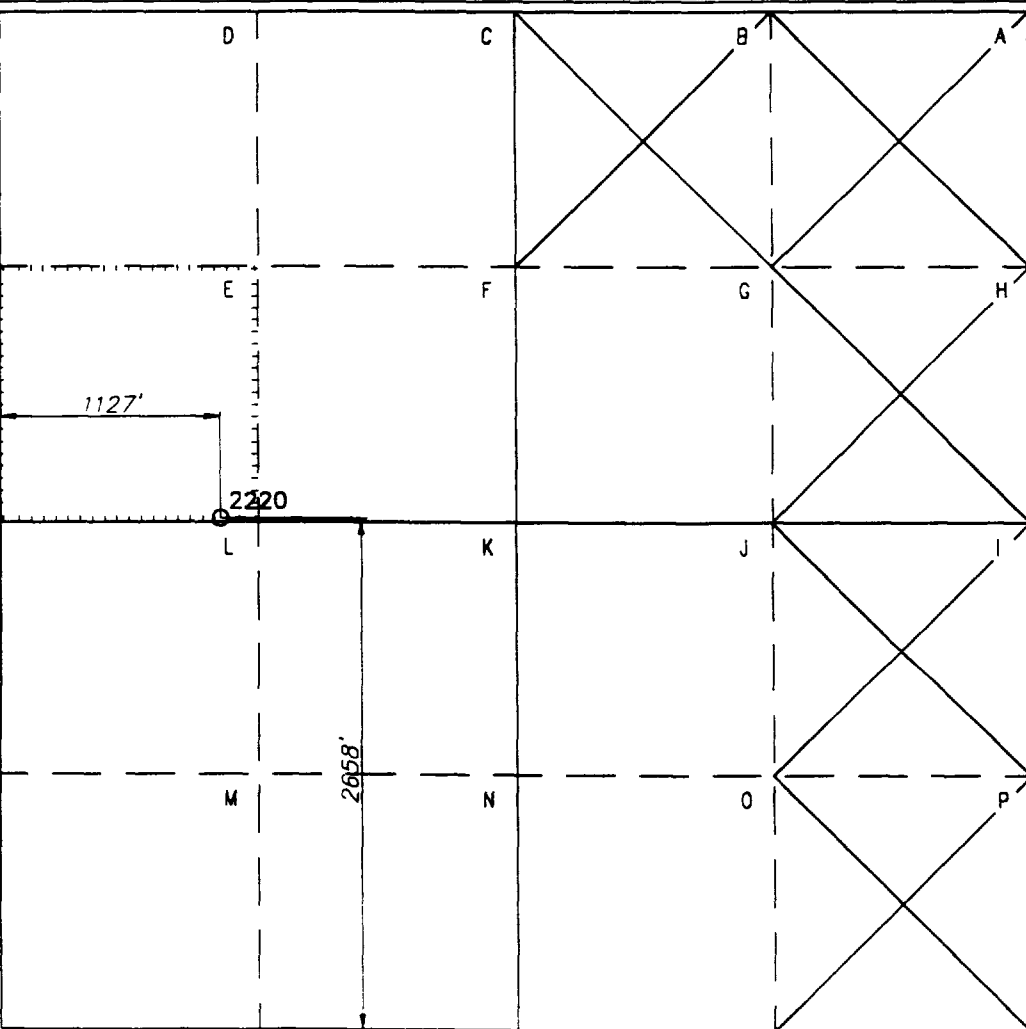
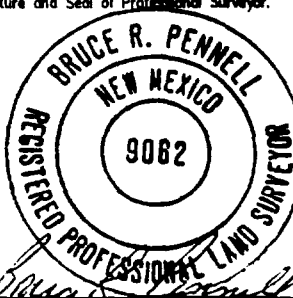
Surface Location

UL or lot no.	Section	Township	Range	Lot Idn	Feet from the	North/South line	Feet from the	East/West line	County
E	32	20S	28E		2658'	SOUTH	1127'	WEST	EDDY

Bottom Hole Location If Different From Surface

UL or lot no.	Section	Township	Range	Lot Idn	Feet from the	North/South line	Feet from the	East/West line	County
Dedicated Acres 40	Joint or infill	Consolidation Code	Order No.						

NO ALLOWABLE WILL BE ASSIGNED TO THIS COMPLETION UNIT ALL INTERESTS HAVE BEEN CONSOLIDATED  
OR A NON-STANDARD UNIT HAS BEEN APPROVED BY THE DIVISION

	<p><b>OPERATOR CERTIFICATION</b></p> <p>I hereby certify that the information contained herein is true and complete to the best of my knowledge and belief.</p> <p>Signature _____</p> <p>Printed Name C.H. Harper</p> <p>Title Permits Supervisor</p> <p>Date _____</p> <p><b>SURVEYOR CERTIFICATION</b></p> <p>I hereby certify that the well location shown on this plat was plotted from field notes of actual surveys made by me or under my supervision, and that the same is true and correct to the best of my belief.</p> <p>Date of Survey 6/8/95</p> <p>Signature and Seal of Professional Surveyor.</p> <p></p> <p>Certificate Number 9082</p>
--	---

Distance to nearest Town

Drawn By

Date

Drawing File Name

UNITED STATES  
DEPARTMENT OF THE INTERIOR  
BUREAU OF LAND MANAGEMENT

APPLICATION FOR PERMIT TO DRILL OR DEEPEN

1a. TYPE OF WORK

DRILL ☒

DEEPEN ☐

5. TYPE OF WELL

OIL ☒

GAS ☐

OTHER

SINGLE ☒

MULTIPLE ☐

2. NAME OF OPERATOR

EXXON CORPORATION ATTN: REGULATORY AFFAIRS ML#14

3. ADDRESS AND TELEPHONE NO.

P. O. BOX 1600  
MIDLAND, TX 79702

4. LOCATION OF WELL (Report location clearly and in accordance with any State requirements.)\*

At surface

2564' FNL & 1377' FEL

At proposed prod. zone

2564' FNL & 1377' FEL

14. DISTANCE IN MILES AND DIRECTION FROM NEAREST TOWN OR POST OFFICE\*

5.5 MI. NORTH OF CARLSBAD, NM

15. DISTANCE FROM PROPOSED\* LOCATION TO  
NEAREST PROPERTY OR LEASE LINE, FT.

2725'

39' FEL

16. NO. OF ACRES IN LEASE

2118.78\*

17. NO. OF ACRES ASSIGNED

TO THIS WELL

40 \*\*

18. DISTANCE FROM PROPOSED LOCATION\*  
TO NEAREST WELL, DRILLING, COMPLETED,  
OR APPLIED FOR, ON THIS LEASE, FT.

834' NW TO #2115

19. PROPOSED DEPTH

4500'

20. ROTARY OR CABLE TOOLS

ROTARY

21. ELEVATIONS (Show whether DF, RT, GR, etc.)

3233' GR

22. APPROX. DATE WORK WILL START\*

10/31/95

23. PROPOSED CASING AND CEMENTING PROGRAM

SIZE OF HOLE	GRADE, SIZE OF CASING	WEIGHT PER FOOT	SETTING DEPTH	QUANTITY OF CEMENT
20"	16"	LINE PIPE	40'	40 CU. FT. TO SURF.
14 3/4"	10 3/4"	40.4#/K-55	600'	350 CU. FT. TO SURF.
9 1/2"	7 5/8"	26.4#/K-55	2540'	500 CU. FT. TO SURF.
6 3/4"	4 1/2"	4.56#/***	****	300 CU. FT.-LNR. TOP

\*SURVEYED ACREAGE = 2140.14. \*\* #2216 IS AT AN UNORTHODOX LOCATION &  
SIMULTANEOUSLY DEDICATED W/ #2215. \*\*\*4 1/2" PROD. STRING IS FIBERGLASS  
\*\*\*\* 4 1/2" PROD. STRING FROM 2300' TO TD.

CSG.

16"

10 3/4"

7 5/8"

4 1/2"

CMT. TYPE

REDI-MIX

LITE CMT. & CLASS "C"

LITE CMT. & CLASS "C"

CLASS "C"

DRILLING DURATION WILL BE 20 DAYS.

FOR SURFACE USE PLAN AND DRILLING EIGHT POINT PLAN REFER TO UNITWIDE  
PLAN ON FILE. BOND COVERAGE PURSUANT TO 43 CFR 3104 FOR LEASE  
ACTIVITIES IS BEING PROVIDED BY EXXON CORPORATION'S NATIONWIDE OIL AND  
GAS BLANKET BOND NUMBER 511-23-06 (BLM BOND NO. 0024).

19. ABOVE SPACE DESCRIBE PROPOSED PROGRAM: If proposal is to deepen, give data on present productive zone and proposed new productive zone. If proposal is to drill or  
deepen directionally, give pertinent data on subsurface locations and measured and true vertical depths. Give blowout preventer program, if any.

24.

SIGNED

*Alex M. Correa*

TITLE

Alex M. Correa

Sr. Regulatory Specialist

(915) 688-6782

07/27/95

This space for Federal or State office use

PERMIT NO.

APPROVAL DATE

APPROVED BY

TITLE

DATE

CONDITIONS OF APPROVAL, IF ANY:



District I.  
PO Box 1380, Hobbs, NM 88241-1980

District II  
PO Drawer DD, Artesia, NM 88211-0719

District III  
1000 Rio Brasas Rd. , Aztec, NM 87410

District IV  
PO Box 2088, Santa Fe, NM 87504-2088

State of New Mexico  
Energy, Minerals & Natural Resources Department

OIL CONSERVATION DIVISION  
PO Box 2088  
Santa Fe, NM 87504-2088

Form C-102  
Revised February 10, 1994  
Submit to Appropriate District Office  
State Lease - 4 Copies  
Fee Lease - 3 Copies

☐ AMENDED REPORT

WELL LOCATION AND ACREAGE DEDICATION PLAT

API Number	Pool Code	Pool Name
	03715	AVALON DELAWARE 3715
Property Code	Property Name	Well Number
	AVALON (DELAWARE) UNIT	2216
OGRD No.	Operator Name	Elevation
007673	Exxon Corp.	3233'

Surface Location

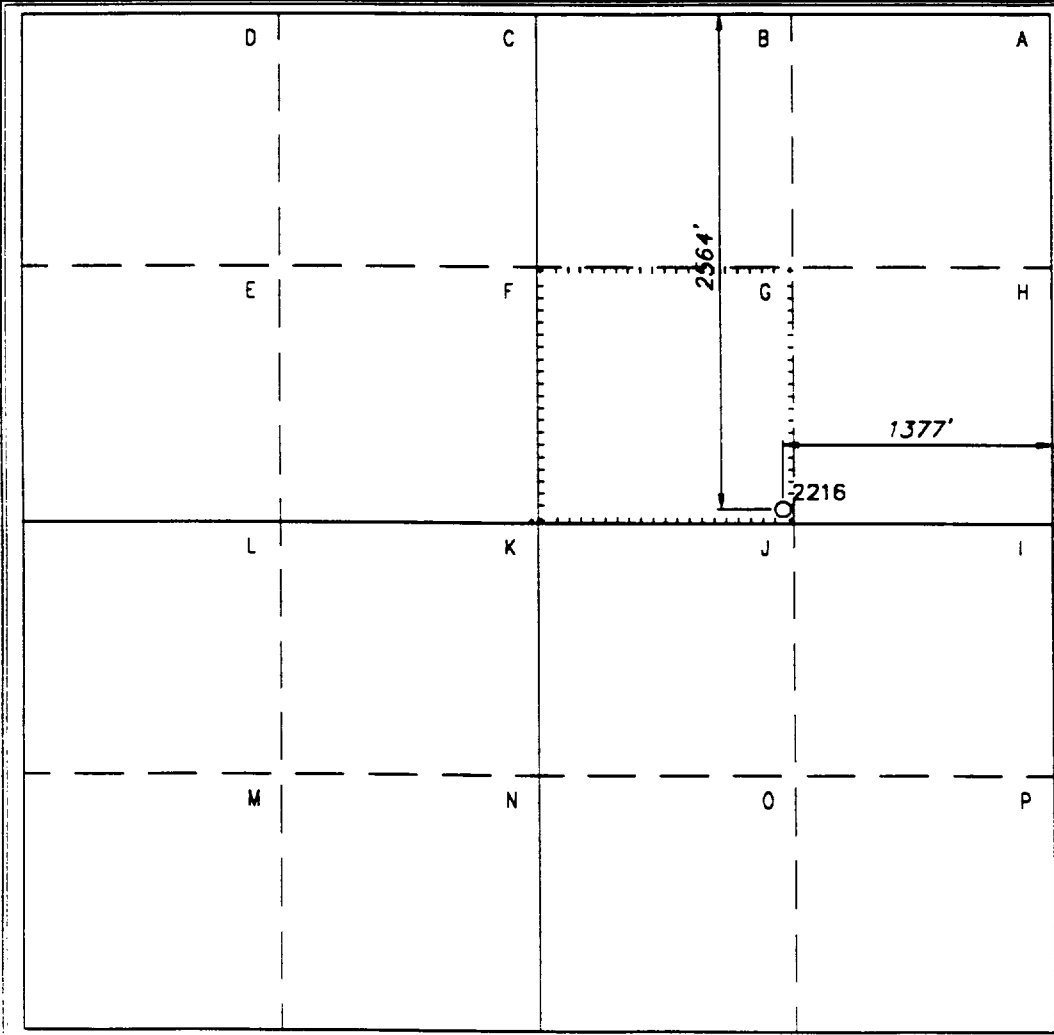
UL or lot no.	Section	Township	Range	Lot Idn	Feet from the	North/South line	Feet from the	East/West line	County
G	31	20S	28E		2564'	NORTH	1377'	EAST	EDDY

Bottom Hole Location If Different From Surface

UL or lot no.	Section	Township	Range	Lot Idn	Feet from the	North/South line	Feet from the	East/West line	County

Dedicated Acres	Joint or Infill	Consolidation Code	Order No.
40			

NO ALLOWABLE WILL BE ASSIGNED TO THIS COMPLETION UNTIL ALL INTERESTS HAVE BEEN CONSOLIDATED  
OR A NON-STANDARD UNIT HAS BEEN APPROVED BY THE DIVISION



OPERATOR CERTIFICATION

I hereby certify that the information  
contained herein is true and complete to the  
best of my knowledge and belief.

Signature  
C.H. Harper  
Printed Name  
Permits Supervisor  
Title  
Date

SURVEYOR CERTIFICATION

I hereby certify that the well location shown on this plat  
was plotted from field notes of actual surveys made by  
me or under my supervision, and that the same is true  
and correct to the best of my belief.

6/8/95  
Date of Survey  
Signature and Seal of Professional Surveyor.

BRUCE R. PENNELL  
NEW MEXICO  
REGISTERED PROFESSIONAL LAND SURVEYOR  
9062  
Certificate Number 9062

UNITED STATES  
DEPARTMENT OF THE INTERIOR  
BUREAU OF LAND MANAGEMENT

5. LEASE DESIGNATION AND SERIAL NO.  
**NMNM 01119**

APPLICATION FOR PERMIT TO DRILL OR DEEPEN

1a. TYPE OF WORK

DRILL ☒

DEEPEN ☐

b. TYPE OF WELL

OIL  
WELL ☒

GAS  
WELL ☐

OTHER

SINGLE  
ZONE ☒

MULTIPLE  
ZONE ☐

2. NAME OF OPERATOR

**EXXON CORPORATION ATTN: REGULATORY AFFAIRS ML#14**

3. ADDRESS AND TELEPHONE NO.

**P. O. BOX 1600  
MIDLAND, TX 79702**

4. LOCATION OF WELL (Report location clearly and in accordance with any State requirements.)\*

At surface

**1388' FNL & 2750' FWL**

At proposed prod. zone

**1388' FNL & 2750' FWL**

14. DISTANCE IN MILES AND DIRECTION FROM NEAREST TOWN OR POST OFFICE\*

**5.5 MI. NORTH OF CARLSBAD, NM**

15. DISTANCE FROM PROPOSED\* LOCATION TO  
NEAREST PROPERTY OR LEASE LINE, FT.  
(Also to nearest drig. unit line, if any)

**3899'  
45' FWL**

16. NO. OF ACRES IN LEASE  
**2118.78\***

17. NO. OF ACRES ASSIGNED  
TO THIS WELL  
**40 \*\***

18. DISTANCE FROM PROPOSED LOCATION\*  
TO NEAREST WELL, DRILLING, COMPLETED,  
OR APPLIED FOR, ON THIS LEASE, FT. **883' SE TO #2115**

19. PROPOSED DEPTH  
**4500'**

20. ROTARY OR CABLE TOOLS  
**ROTARY**

21. ELEVATIONS (Show whether DF, RT, GR, etc.)

**3240 GR**

22. APPROX. DATE WORK WILL START\*

**11/20/95**

23.

PROPOSED CASING AND CEMENTING PROGRAM

SIZE OF HOLE	GRADE, SIZE OF CASING	WEIGHT PER FOOT	SETTING DEPTH	QUANTITY OF CEMENT
<b>20"</b>	<b>16"</b>	<b>LINE PIPE</b>	<b>40'</b>	<b>40 CU. FT. TO SURF.</b>
<b>14 3/4"</b>	<b>10 3/4"</b>	<b>40.4#/K-55</b>	<b>600'</b>	<b>350 CU. FT. TO SURF.</b>
<b>9 1/2"</b>	<b>7 5/8"</b>	<b>26.4#/K-55</b>	<b>2540'</b>	<b>500 CU. FT. TO SURF.</b>
<b>6 3/4"</b>	<b>4 1/2"</b>	<b>4.56#/***</b>	<b>****</b>	<b>300 CU. FT.-LNR. TOP</b>

\*SURVEYED ACREAGE = 2140.14. \*\* #2014 IS AT AN UNORTHODOX LOCATION &  
SIMULTANEOUSLY DEDICATED W/ # . \*\*\*4 1/2" PROD. STRING IS FIBERGLASS  
\*\*\*\* 4 1/2" PROD. STRING FROM 2300' TO TD.

CSG. CMT. TYPE  
16" REDI-MIX  
10 3/4" LITE CMT. & CLASS "C"  
7 5/8" LITE CMT. & CLASS "C"  
4 1/2" CLASS "C"

DRILLING DURATION WILL BE 20 DAYS.

FOR SURFACE USE PLAN AND DRILLING EIGHT POINT PLAN REFER TO UNITWIDE  
PLAN ON FILE. BOND COVERAGE PURSUANT TO 43 CFR 3104 FOR LEASE  
ACTIVITIES IS BEING PROVIDED BY EXXON CORPORATION'S NATIONWIDE OIL AND  
GAS BLANKET BOND NUMBER 511-23-06 (BLM BOND NO. 0024).

IN ABOVE SPACE DESCRIBE PROPOSED PROGRAM: If proposal is to deepen, give data on present productive zone and proposed new productive zone. If proposal is to drill or  
deepen directionally, give pertinent data on subsurface locations and measured and true vertical depths. Give blowout preventer program, if any.

24.

SIGN

*Alex M. Correa*

TITLE

**Alex M. Correa (915) 688-6782**  
**Sr. Regulatory Specialist 07/28/95**

(This space for Federal or State office use)

PERMIT NO.

APPROVAL DATE

APPROVED BY

TITLE

DATE

CONDITIONS OF APPROVAL, IF ANY:

District I  
PO Box 1980, Hobbs, NM 88241-1980

District II  
PO Drawer DD, Artesia, NM 88211-0719

District III  
1000 Rio Brasos Rd., Aztec, NM 87410

District IV  
PO Box 2088, Santa Fe, NM 87504-2088

State of New Mexico  
Energy, Minerals & Natural Resources Department

OIL CONSERVATION DIVISION  
PO Box 2088  
Santa Fe, NM 87504-2088

Form C-102  
Revised February 10, 1994  
Submit to Appropriate District Office  
State Lease - 4 Copies  
Fee Lease - 3 Copies

☐ AMENDED REPORT

WELL LOCATION AND ACREAGE DEDICATION PLAT

API Number	Pool Code 03715	Pool Name AVALON DELAWARE 3715
Property Code	Property Name AVALON (DELAWARE) UNIT	Well Number 2014
OCRID No. 007673	Operator Name Exxon Corp.	Elevation 3240'

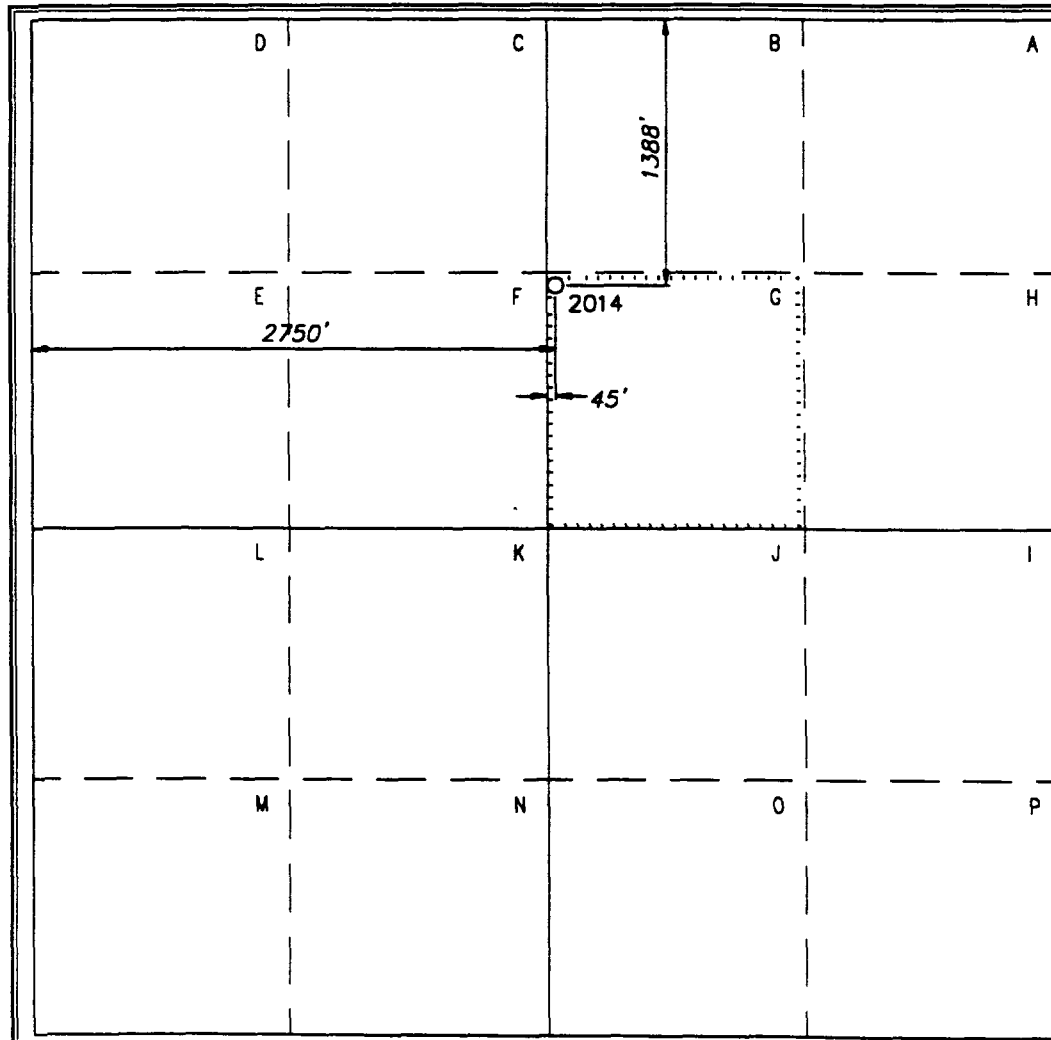
Surface Location

UL or lot no. G	Section 31	Township 20S	Range 28E	Lot Idn	Feet from the 1388'	North/South line NORTH	Feet from the 2750'	East/West line WEST	County EDDY
--------------------	---------------	-----------------	--------------	---------	------------------------	---------------------------	------------------------	------------------------	----------------

Bottom Hole Location If Different From Surface

UL or lot no.	Section	Township	Range	Lot Idn	Feet from the	North/South line	Feet from the	East/West line	County
Dedicated Acres 40	Joint or Infill	Consolidation Code	Order No.						

NO ALLOWABLE WILL BE ASSIGNED TO THIS COMPLETION UNIT. ALL INTERESTS HAVE BEEN CONSOLIDATED  
OR A NON-STANDARD UNIT HAS BEEN APPROVED BY THE DIVISION



OPERATOR CERTIFICATION

I hereby certify that the information  
contained herein is true and complete to the  
best of my knowledge and belief.

Signature

C.H. Harper

Printed Name

Permits Supervisor

Title

Date

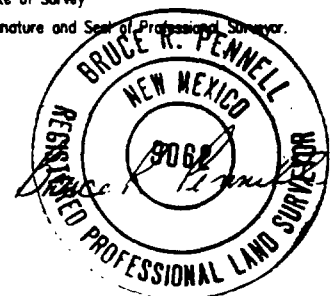
SURVEYOR CERTIFICATION

I hereby certify that the well location shown on this plat  
was plotted from field notes of actual surveys made by  
me or under my supervision, and that the same is true  
and correct to the best of my belief.

7/24/95

Date of Survey

Signature and Seal of Professional Surveyor.



Certificate Number

9062

Distance to nearest Town 5.5 Miles N of CARLSBAD, New Mexico	Drawn By SRP	Date 8/2/95	Drawing File Name File No: A10081n
---	-----------------	----------------	---------------------------------------

HINKLE, COX, EATON, COFFIELD & HENSLEY  
P.L.L.C.\*

ATTORNEYS AT LAW

218 MONTEZUMA POST OFFICE BOX 2068  
SANTA FE, NEW MEXICO 87504-2068  
(505) 982-4554 FAX (505) 982-8623

LEWIS C. COX, JR. (1924-1993)  
CLARENCE E. HINKLE (1901-1985)

OF COUNSEL  
O. M. CALHOUN\*\* JOE W. WOOD  
RICHARD L. CAZZELL\*\* RAY W. RICHARDS\*\*  
L. A. WHITE\*\*

AUSTIN AFFILIATION  
HOFFMAN & STEPHENS, P.C.  
KENNETH R. HOFFMAN\*  
TOM D. STEPHENS\*  
RONALD C. SCHULTZ, JR.\*  
JOSE CANO\*

JEFFREY S. BAIRD\*  
THOMAS E. HOOD\*\*  
REBECCA NICHOLS JOHNSON  
STANLEY K. KOTOVSKY, JR.  
H. R. THOMAS  
ELLEN S. CASEY  
MARGARET CARTER LUDEWIG  
S. BARRY PAISNER  
MARTIN MEYERS  
WYATT L. BROOKS\*\*  
DAVID M. RUSSELL\*\*  
ANDREW J. CLOUTIER  
STEPHANIE LANDRY  
KIRT E. MOELLING\*\*  
DIANE FISHER  
JULIE P. NEERKEN  
WILLIAM P. SLATTERY  
CHRISTOPHER M. MOODY

JAMES A. GILLES  
MARGARET R. MCNEIL  
LISA K. SMITH\*\*  
NORMAN D. EWA  
DARREN T. GROS  
MOLLY MCINTOSH  
MARCIA B. LINCOLN  
SCOTT A. SHULTZ  
PAUL G. NASO  
R. "TREY" ARVIZO  
AMY C. WRIGHT\*\*  
BRADLEY G. BISHOP  
KAROLYN KING NEEL  
ELLEN T. LOUDERBACK  
BARBARA GREGG GIL  
JAMES H. WOOD\*

PAUL W. EATON  
CONRAD E. COFFIELD  
HAROLD L. HENSLEY, JR.  
STUART D. SHANOR  
ERIC D. LANPHERE  
C. D. MARTIN  
ROBERT P. TINNIN, JR.  
MARSHALL G. MARTIN  
MASTON C. COURTNEY\*\*  
DON L. PATTERSON\*\*  
DOUGLAS L. LUNSFORD  
NICHOLAS J. NOEDING  
T. CALDER EZZELL, JR.  
WILLIAM B. BURFORD\*  
RICHARD E. OLSON  
RICHARD R. WILFONG\*  
THOMAS J. MCBRIDE  
NANCY S. CUSACK

JEFFREY L. FORNACIARI  
JEFFREY D. HEWETT  
JAMES BRUCE  
JERRY F. SHACKELFORD\*  
JEFFREY W. HELLBERG\*  
WILLIAM F. COUNTISS\*\*  
ALBERT L. PITTS  
THOMAS M. HNASKO  
JOHN C. CHAMBERS\*  
GARY D. COMPTON\*  
W. H. BRIAN, JR.\*\*  
RUSSELL J. BAILEY\*\*  
CHARLES R. WATSON, JR.\*\*  
THOMAS D. HAINES, JR.  
GREGORY J. NIBERT  
MARK C. DOW  
FRED W. SCHWENDIMANN  
JAMES M. HUDSON

\*REGISTERED IN NEW MEXICO  
AS HINKLE, COX, EATON,  
COFFIELD & HENSLEY, P.L.L.C., LTD., CO.

\*NOT LICENSED IN NEW MEXICO  
\*FORMERLY COMPRISING THE FIRM OF  
CULTON, MORGAN, BRITAIN & WHITE, P.C.

August 11, 1995

RECEIVED

AUG 11 1995

HAND DELIVERED

Michael E. Stogner  
Oil Conservation Division  
2040 So. Pacheco Street  
Santa Fe, New Mexico 87502

Oil Conservation Division

Re: **Exxon Corporation's application for administrative approval  
of four unorthodox well locations in the proposed Avalon  
(Delaware) Unit**

Dear Mr. Stogner:

Regarding the July 27, 1995 letter application by Alex Correa of Exxon: As you know, in Case No. 11297 Exxon requested 18 unorthodox well locations as part of the waterflood project for the Unit. Unfortunately, most of those locations were not staked at the time of hearing. After staking, it turns out most of the locations requested at the hearing are wrong. Attached for your information is a chart listing the locations requested at hearing and the current locations.

As a result of these changes, Mr. Correa requested administrative approval for the four injection wells, which will be the first four wells drilled for the proposed Unit. Exxon felt this application was necessary due to the changed locations.

We appreciate your attention to this matter. Please call if you have any questions.

Very truly yours,

HINKLE, COX, EATON, COFFIELD  
& HENSLEY, P.L.L.C., Ltd., Co.

  
James Bruce

Enclosure

cc: William T. Duncan, Jr.

POST OFFICE BOX 10  
ROSWELL, NEW MEXICO 88202  
(505) 622-6510  
FAX (505) 623-9332

POST OFFICE BOX 3580  
MIDLAND, TEXAS 79702  
(915) 683-4691  
FAX (915) 683-6518

POST OFFICE BOX 9238  
AMARILLO, TEXAS 79105  
(806) 372-5569  
FAX (806) 372-9761

POST OFFICE BOX 2043  
ALBUQUERQUE, NEW MEXICO 87103  
(505) 768-1500  
FAX (505) 768-1529

401 W. 15TH STREET,  
AUSTIN, TEXAS  
(512) 476-7  
FAX (512) 476

TE 800  
721

# EXHIBIT "A"

CASE NO. 11297

ORDER NO. R- \_\_\_\_\_

## Exxon Corporation Unorthodox Well Locations Avalon (Delaware) Unit Waterflood Project Area

Township 20 South, Range 28 East, NMPM,  
Eddy County, New Mexico

Well Name and Number	Originally Proposed Location	Section	Actual Staked Location
AVALON DELAWARE UNIT 1212	1668 FNL & 1455 FWL	30	1665' FNL & 1452' FWL
AVALON DELAWARE UNIT 1412	2310 FSL & 1485 FWL	30	2301' FSL & 1485' FWL
AVALON DELAWARE UNIT 1612	992 FSL & 1489 FWL	30	1152' FSL & 1489' FWL
AVALON DELAWARE UNIT 1614	1046 FSL & 2677 FWL	30	No change
AVALON DELAWARE UNIT 1812	183 FNL & 1397 FWL	31	101' FNL & 1355' FWL
AVALON DELAWARE UNIT 1814	123 FNL & 2673 FEL	31	No change
AVALON DELAWARE UNIT 1816	46 FNL & 1402 FEL	31	43' FNL & 1458' FEL
AVALON DELAWARE UNIT 2012	1386 FNL & 1314 FWL	31	No change
AVALON DELAWARE UNIT 2014	1335 FNL & 2681 FWL	31	1388' FNL & 2750' FWL
AVALON DELAWARE UNIT 2018	1317 FNL & 97 FEL	31	1310' FNL & 97' FEL
AVALON DELAWARE UNIT 2212	2600 FSL & 1322 FWL	31	No change
AVALON DELAWARE UNIT 2214	2699 FSL & 2549 FWL	31	2610' FSL & 2549' FWL
AVALON DELAWARE UNIT 2216	2566 FNL & 1377 FEL	31	2564' FNL & 1377' FEL
AVALON DELAWARE UNIT 2218	2423 FSL & 78 FEL	31	2438' FSL & 78' FEL
AVALON DELAWARE UNIT 2220	2648 FSL & 1127 FWL	32	2658' FSL & 1127' FWL
AVALON DELAWARE UNIT 2412	1337 FSL & 1324 FWL	31	No change
AVALON DELAWARE UNIT 2418	1356 FSL & 99 FEL	31	No change
AVALON DELAWARE UNIT 2420	1323 FSL & 1107 FWL	32	1333' FSL & 1107' FWL
AVALON DELAWARE UNIT 2016*	1305 FNL & 1305 FEL	31	No change

\*Already drilled under prior Division Order (previously designated the Exxon Corporation Yates "C" Fed. #36).