

3D

Proposed Avalon (Delaware) Unit Technical Report Discussions

Date: Friday, May 13, 1994

Location: Exxon Building Claydesta A, RTG Conference Room 238, Midland, Tx

Agenda	Presenters	Duration	Time
	-----	-----	-----
I. Overview	Tom Kane	5 Min	8:00-8:05
A. Purpose			
B. Expected Outcomes			
II. Geologic Pick on Base of Upper Cherry Canyon Reservoir as Interpreted by Premier Production	Ken Jones, Paul White	45 Min	8:05-8:50
III. Itemize Key Points from Presentation	All	15 Min	8:50-9:05
IV. Stratigraphic Mapping Surface Methodology -Base of Upper Cherry Canyon Reservoir from Technical Report	Tom Kane	45 Min	9:05-9:50
* Break *		10 Min	9:50-10:00
V. Itemize Key Points from Presentation	All	15 Min	10:00-10:15
VI. Discussion	All	60 Min	10:15-11:15
VII. Wrap Up -Conclusions -Next Step -Meeting Feedback	All	30 Min	11:15-11:45
TOTAL:		-----	3.75 Hours

AVALON (DELAWARE) TECHNICAL REPORT DISCUSSIONS

MAY 13, 1994

- **OVERVIEW**

- Technical report has been approved by >90% of potential Working Interest Owners.
- Today's discussion is in response to a technical issue raised by Premier Production at the April 26, 1994 Working Interest Owner meeting.
- The technical issue for today's discussion is the geologic pick at the base of Upper Cherry Canyon Reservoir.

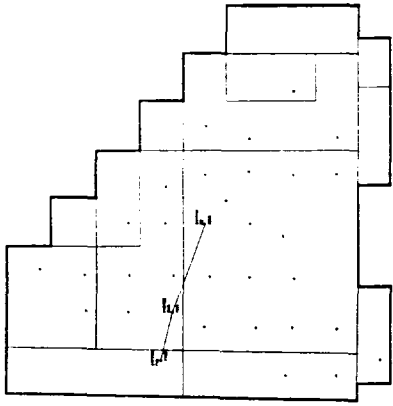
AVALON (DELAWARE) TECHNICAL REPORT DISCUSSIONS

MAY 13, 1994

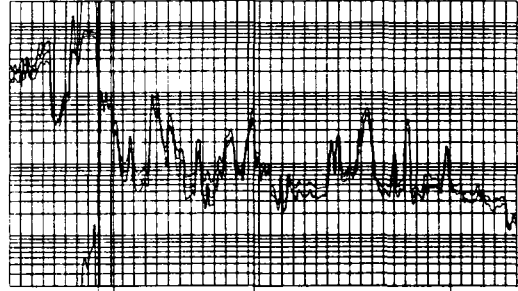
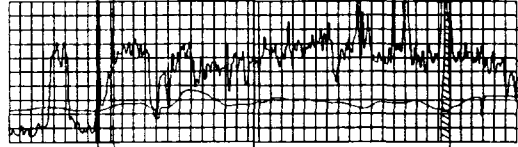
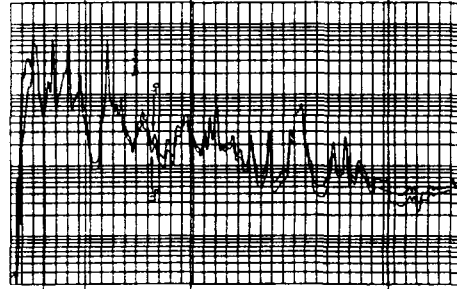
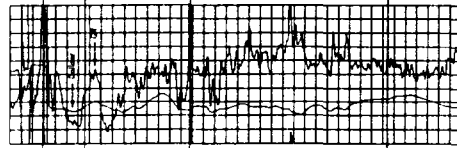
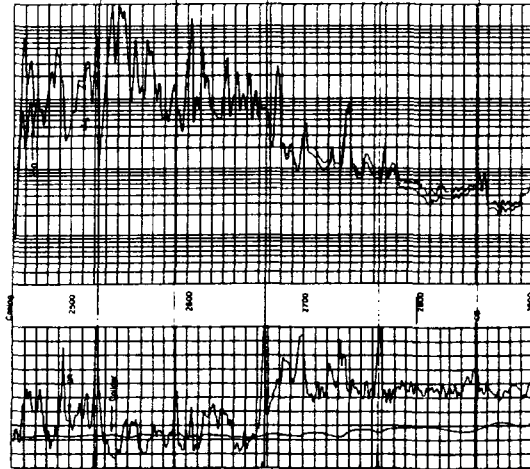
- **PURPOSE**
 - Information Exchange
 - Provide attendees an opportunity to review Premier Production's different interpretation of geologic pick at the base of Upper Cherry Canyon Reservoir (UCHB) in certain wells.
 - Provide attendees an additional review of the stratigraphic methodology and the UCHB from the Technical Committee Report.

- **EXPECTED OUTCOME**
 - Attendees have clear understanding of Premier's interpretation of the UCHB.
 - Attendees have clear understanding for the UCHB from the Technical Report.
 - Discussion about action item (if any) for next step regarding this issue.

Dual Lateral Cherry Canyon Base



Premier - - - - -
 Exxon
 Common ———



PREMIER

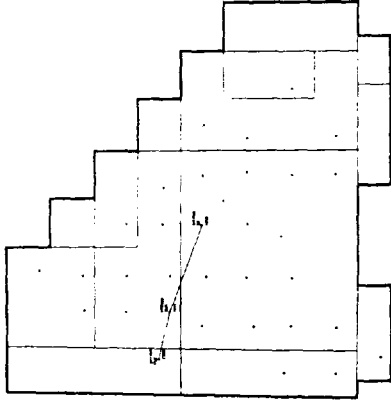
FV3

WM4

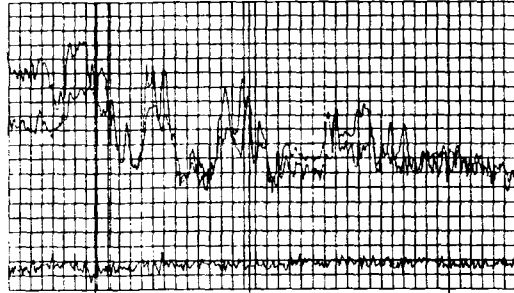
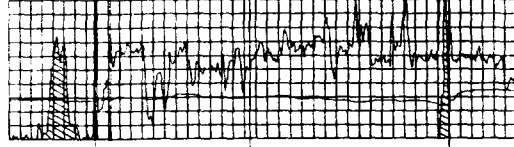
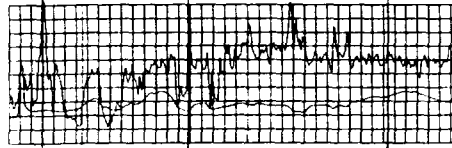
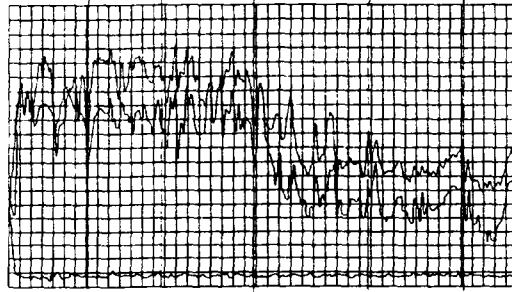
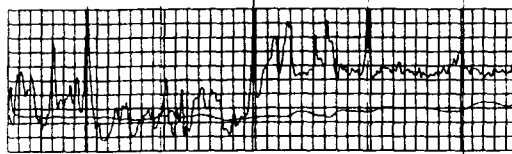
C3

Gamma Ray Neutron

Datum: Cherry Canyon Base



Premier
Exxon
Common



FV3

WM4

C3

PREMIER

AVALON (DELAWARE) FIELD MAPPING SURFACE METHODOLOGY

EXXON

- Sequence stratigraphic framework developed from regional outcrop and seismic.
- Stratigraphic surfaces were defined in cores and well logs.
- Cross section grid was 'loop tied' to determine areally extensive surfaces.
- Multiple correlation markers were carried on well logs to constrain mapping surfaces.
- Mud log show data and current perforations confirmed reservoir intervals.
- Structure and gross interval isopach maps provided geologic validity of mapping surfaces.

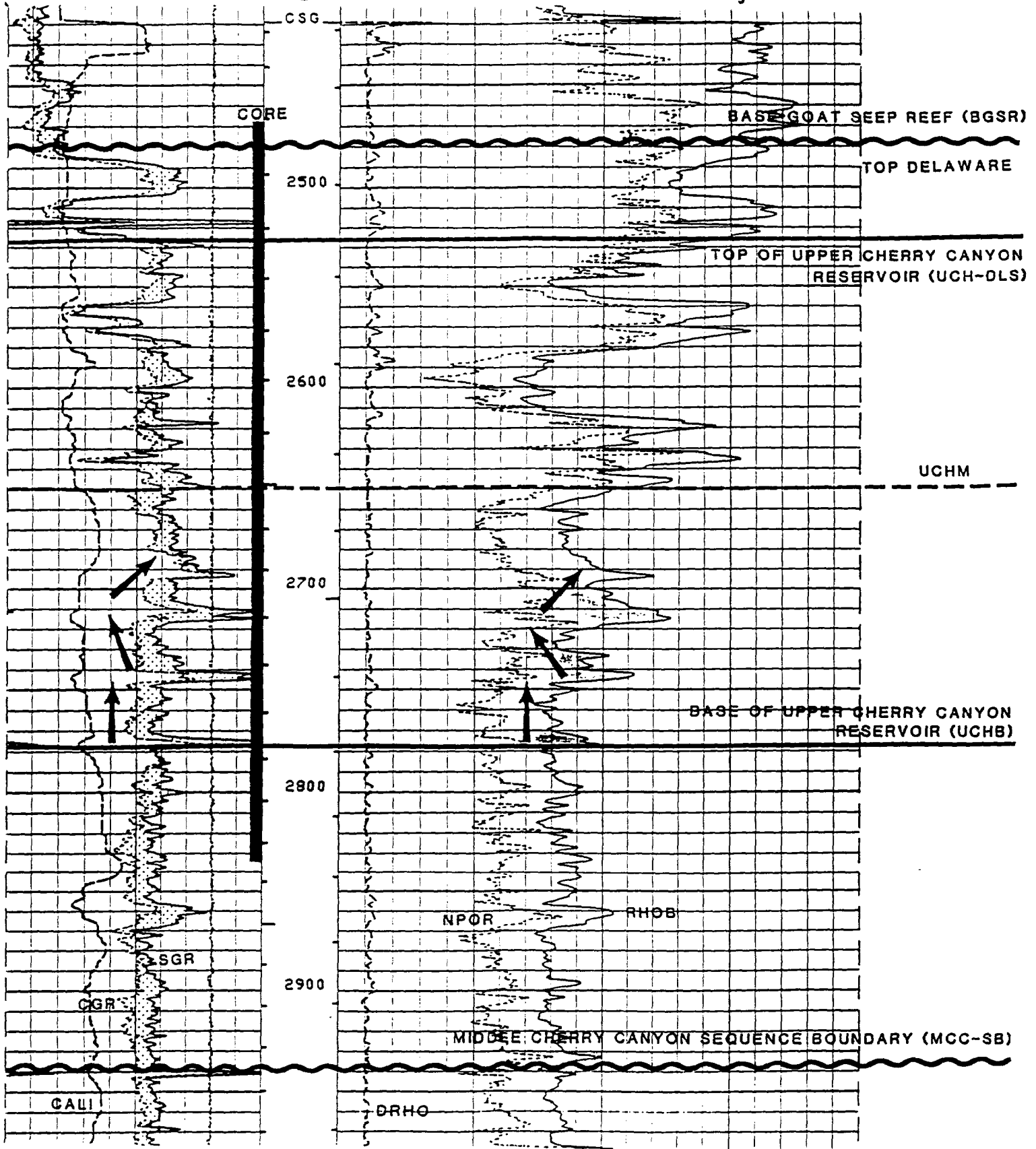
BONEAU
5-13-94

TYPE LOG UPPER CHERRY CANYON RESERVOIR

EXXON Yates "C" Federal #36



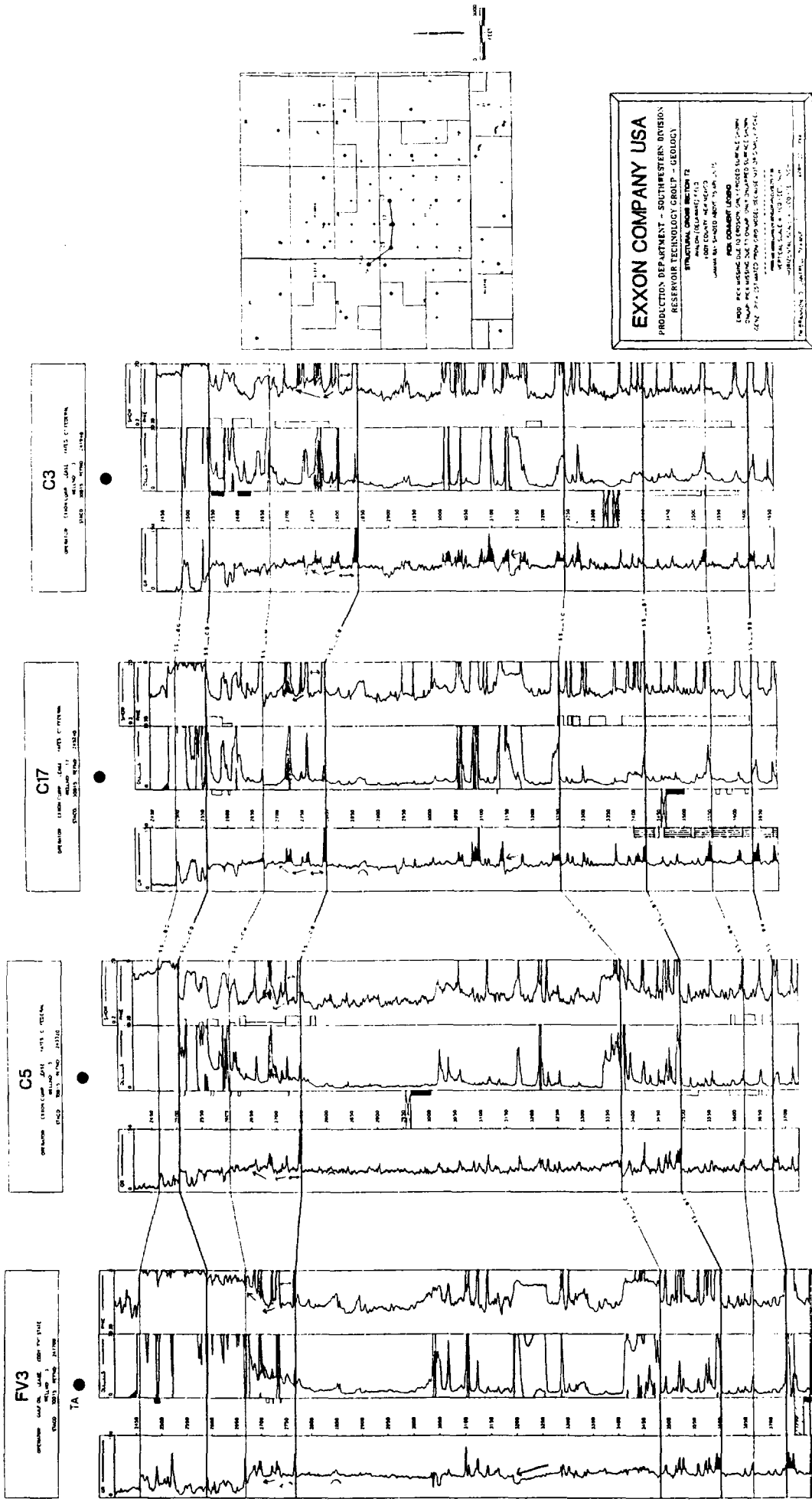
Neutron-Litho-Density



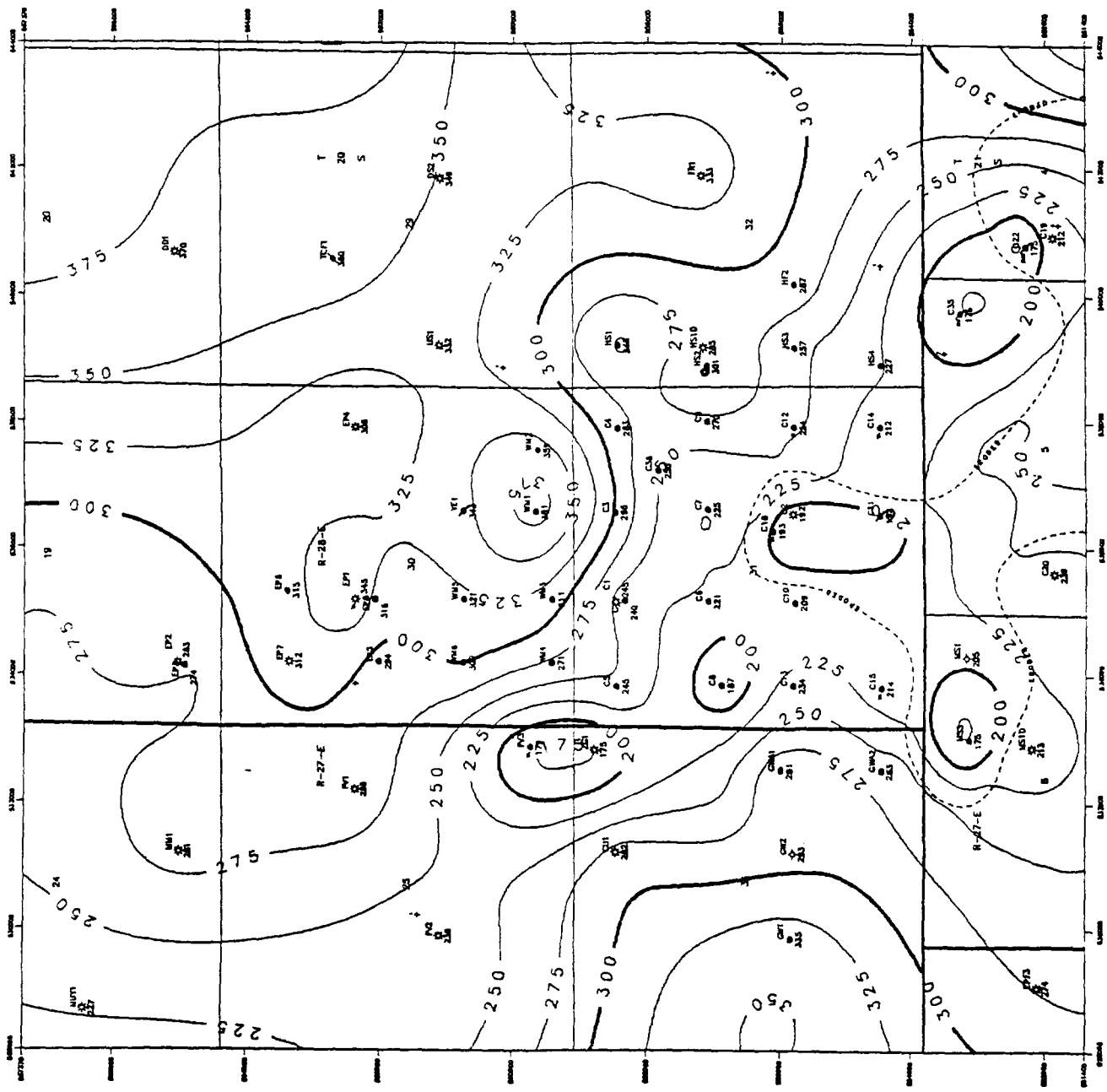
WEST

AVALON (DELAWARE) FIELD STRUCTURAL CROSS SECTION T2

EAST



UNITED STATES GEOLOGICAL SURVEY



WELL STATUS SYMBOL LEGEND

- PRODUCING OIL WELL
- SHUT IN OIL WELL
- TEMPORARILY ABANDONED OIL WELL
- ABANDONED OIL WELL
- PRODUCING GAS WELL
- TEMPORARILY ABANDONED GAS WELL
- ACTIVE INJECTION WELL
- SALT WATER INJECTION WELL
- DRY HOLE
- DRY HOLE, JUNKED AND ABANDONED
- ABANDONED LOCATION

NOTE: WELLS WITH A SMALL SIZE FOR WELLS USED FOR GAS ONLY. SMALL SYMBOLS INDICATE WELLS NOT USED IN CURRENT YEAR.

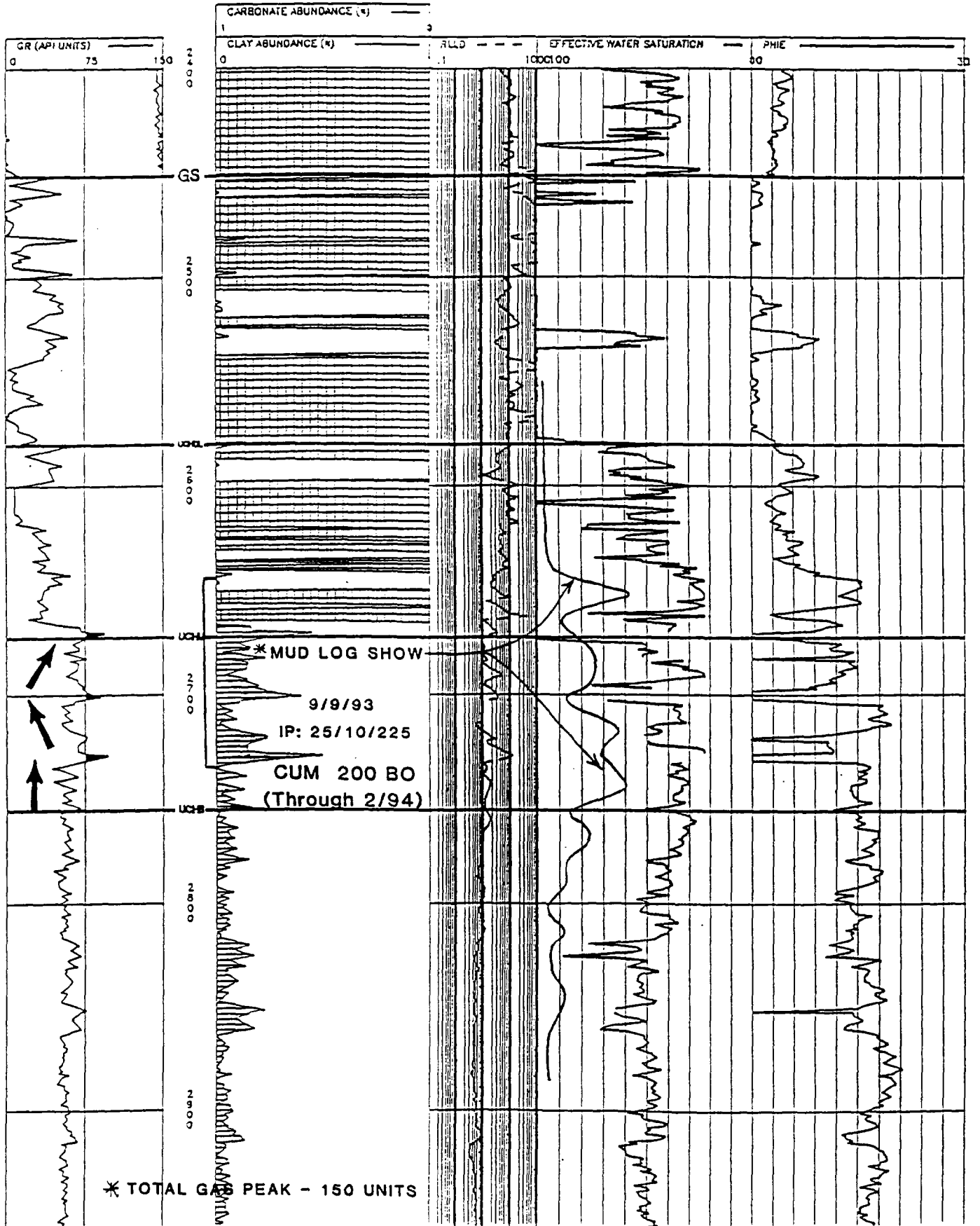
Map 7

EXXON COMPANY USA
 PRODUCTION DEPARTMENT - EASTERN DIVISION
 RESERVE TECHNOLOGY GROUP - GEOSCIENCE

TOTAL GROSS THICKNESS MAP
 AREA: CALHOUN OF SOUTHERN COAST
 COUNTY: CANTON, MISSISSIPPI
 MAP SCALE: 1:50,000
 DATE: 1980
 BY: [Name]

YATES PET CITDEL "ZG" 1

STACC: 30015 REFNO: 247240



GULF OIL

EDDY "FV" STATE 3

STACO: J0015 REFNO: 247700

TA ●

