



Arch Petroleum Inc.

August 22, 1995

Waiver of Objection to Unorthodox Locations
Application of Arch Petroleum Inc. for seven
unorthodox infill oil well locations
Section 21, 22, and 28 of T23S-R37E
Lea County, New Mexico

New Mexico Department of Energy,
Minerals, and Natural Resources
2040 South Pacheco Street
Santa Fe, New Mexico 87505

Gentlemen:

This is to advise that the undersigned was given due notice that Arch Petroleum has made application for permit to drill seven infill oil wells. These wells are the C. E. Lamunyon #51, 52, 53, 54, 55, 56, and the Saltmount #3.

We hereby waive any objection to the granting of the permit to drill. These wells are to be located in Sections 21, 22, and 28 of T23S, R37E, Lea County, New Mexico.

Executed this 22nd day of August, 1995.

Sincerely,

Apache Corporation

By: 

Title: Sr. Reservoir Engineer

BEFORE THE
OIL CONSERVATION DIVISION
Santa Fe, New Mexico

Case No. 11344 Exhibit No. 6

Submitted by: Arch Petroleum Inc.

Hearing Date: August 24, 1995

DISTRICT I
P.O. Box 1980, Hobbs, NM 88241-1980

State of New Mexico
Energy, Minerals and Natural Resources Department

Form C-102
Revised February 10, 1994
Submit to Appropriate District Office
State Lease - 4 Copies
Fee Lease - 3 Copies

DISTRICT II
P.O. Drawer DD, Artesia, NM 88211-0719

OIL CONSERVATION DIVISION
P.O. Box 2088

DISTRICT III
1000 Rio Brazos Rd., Aztec, NM 87410

Santa Fe, New Mexico 87504-2088

DISTRICT IV
P.O. BOX 2088, SANTA FE, N.M. 87504-2088

AMENDED REPORT

WELL LOCATION AND ACREAGE DEDICATION PLAT

API Number	Pool Code 58300	Pool Name Teague Blinebry
Property Code	Property Name C.E. LAMUNYON	Well Number 51
OGRID No. 962	Operator Name ARCH PETROLEUM, INC.	Elevation 3294

Surface Location

UL or lot No.	Section	Township	Range	Lot Idn	Feet from the	North/South line	Feet from the	East/West line	County
A	21	23 S	37 E		1300	NORTH	560	EAST	LEA

Bottom Hole Location If Different From Surface

UL or lot No.	Section	Township	Range	Lot Idn	Feet from the	North/South line	Feet from the	East/West line	County

Dedicated Acres 40	Joint or Infill	Consolidation Code	Order No.
------------------------------	-----------------	--------------------	-----------

NO ALLOWABLE WILL BE ASSIGNED TO THIS COMPLETION UNTIL ALL INTERESTS HAVE BEEN CONSOLIDATED OR A NON-STANDARD UNIT HAS BEEN APPROVED BY THE DIVISION

<p>ILLEGIBLE</p>		<p>OPERATOR CERTIFICATION</p> <p><i>I hereby certify the the information contained herein is true and complete to the best of my knowledge and belief.</i></p> <p><i>Bobbie Brooks</i> Signature</p> <p>BOBBIE BROOKS Printed Name</p> <p>PRODUCTION ANALYST Title</p> <p>AUGUST 3, 1995 Date</p>
	<p>SEE DETAIL</p>	<p>SURVEYOR CERTIFICATION</p> <p><i>I hereby certify that the well location shown on this plat was plotted from field notes of actual surveys made by me or under my supervision and that the same is true and correct to the best of my belief.</i></p> <p style="text-align: right;">JUNE 5, 1995</p> <p>Date Surveyed _____ SJA</p> <p>Signature & Seal of Professional Surveyor</p> <p><i>Ronald J. Edson 6-9-95</i></p> <p>W.O. Com. 95-11-0886</p> <p>Certificate No. JOHN W. WEST 676 RONALD J. EDSON 3239 GARY EDSON 12641</p>

BEFORE THE
OIL CONSERVATION DIVISION
Santa Fe, New Mexico

Case No. 11344 Exhibit No. 7

Submitted by: Arch Petroleum Inc.

Hearing Date: August 24, 1995

DISTRICT I
P.O. Box 1980, Hobbs, NM 88241-1980

State of New Mexico

Energy, Minerals and Natural Resources Department

Form C-102
Revised February 10, 1994
Submit to Appropriate District Office
State Lease - 4 Copies
Fee Lease - 3 Copies

DISTRICT II
P.O. Drawer DD, Artesia, NM 88211-0719

DISTRICT III
1000 Rio Brazos Rd., Aztec, NM 87410

OIL CONSERVATION DIVISION

P.O. Box 2088

Santa Fe, New Mexico 87504-2088

DISTRICT IV
P.O. BOX 2088, SANTA FE, N.M. 87504-2088

AMENDED REPORT

WELL LOCATION AND ACREAGE DEDICATION PLAT

API Number	Pool Code 58300	Pool Name Teague Blinebry
Property Code	Property Name C.E. LAMUNYON	Well Number 52
OGRID No. 962	Operator Name ARCH PETROLEUM, INC.	Elevation 3316

Surface Location

UL or lot No.	Section	Township	Range	Lot Idn	Feet from the	North/South line	Feet from the	East/West line	County
C	21	23 S	37 E		1300	NORTH	2210	WEST	LEA

Bottom Hole Location If Different From Surface

UL or lot No.	Section	Township	Range	Lot Idn	Feet from the	North/South line	Feet from the	East/West line	County

Dedicated Acres 40	Joint or infill	Consolidation Code	Order No.
------------------------------	-----------------	--------------------	-----------

NO ALLOWABLE WILL BE ASSIGNED TO THIS COMPLETION UNTIL ALL INTERESTS HAVE BEEN CONSOLIDATED OR A NON-STANDARD UNIT HAS BEEN APPROVED BY THE DIVISION

	<p>OPERATOR CERTIFICATION</p> <p>I hereby certify the the information contained herein is true and complete to the best of my knowledge and belief.</p> <p><i>Bobbie Brooks</i> Signature</p> <p>BOBBIE BROOKS Printed Name</p> <p>PRODUCTION ANALYST Title</p> <p>AUGUST 3, 1995 Date</p>
	<p>SURVEYOR CERTIFICATION</p> <p>I hereby certify that the well location shown on this plat was plotted from field notes of actual surveys made by me or under my supervision and that the same is true and correct to the best of my belief.</p> <p>JUNE 6, 1995 Date Surveyed</p> <p>Signature & Seal of Professional Surveyor <i>Ronald F. Eason</i> 6-9-95 W.O. Num. 95-14-20887</p>
	<p>Certificate No. JOHN W. WEST 676 RONALD F. EASON 3239 DAVE EGDSON 12841</p>

DISTRICT I
P.O. Box 1900, Hobbs, NM 88241-1900

State of New Mexico
Energy, Minerals and Natural Resources Department

Form C-102
Revised February 10, 1994
Submit to Appropriate District Office
State Lease - 4 Copies
Fee Lease - 3 Copies

DISTRICT II
P.O. Drawer DD, Artesia, NM 88211-0719

OIL CONSERVATION DIVISION
P.O. Box 2088

DISTRICT III
1000 Rio Brazos Rd., Aztec, NM 87410

Santa Fe, New Mexico 87504-2088

DISTRICT IV
P.O. BOX 2088, SANTA FE, N.M. 87504-2088

AMENDED REPORT

WELL LOCATION AND ACREAGE DEDICATION PLAT

API Number	Pool Code 58300	Pool Name Teague Blinebry
Property Code	Property Name C.E. LAMUNYON	Well Number 53
OGRID No. 962	Operator Name ARCH PETROLEUM, INC.	Elevation 3294

Surface Location

UL or lot No.	Section	Township	Range	Lot Idn	Feet from the	North/South line	Feet from the	East/West line	County
M	22	23 S	37 E		1300	SOUTH	330	WEST	LEA

Bottom Hole Location If Different From Surface

UL or lot No.	Section	Township	Range	Lot Idn	Feet from the	North/South line	Feet from the	East/West line	County

Dedicated Acres 40	Joint or Infill	Consolidation Code	Order No.
------------------------------	-----------------	--------------------	-----------

NO ALLOWABLE WILL BE ASSIGNED TO THIS COMPLETION UNTIL ALL INTERESTS HAVE BEEN CONSOLIDATED OR A NON-STANDARD UNIT HAS BEEN APPROVED BY THE DIVISION

	<p>OPERATOR CERTIFICATION</p> <p><i>I hereby certify the the information contained herein is true and complete to the best of my knowledge and belief.</i></p> <p><i>Bobbie Brooks</i> Signature</p> <p>BOBBIE BROOKS Printed Name</p> <p>PRODUCTION ANALYST Title</p> <p>AUGUST 3, 1995 Date</p>
	<p>SURVEYOR CERTIFICATION</p> <p><i>I hereby certify that the well location shown on this plat was plotted from field notes of actual surveys made by me or under my supervision, and that the same is true and correct to the best of my belief.</i></p> <p>JUNE 6, 1995 Date Surveyed</p> <p><i>Ronald J. Lidson</i> Signature & Seal of Professional Surveyor</p> <p>6-9-95 Date</p> <p>P.O. Box 95-11-0888 Well No.</p> <p>Certificate No. JOHN W. WEST 676 PROFESSOR RONALD J. LIDSON 3259 GARY LIDSON 17641</p>

DISTRICT I
P.O. Box 1990, Hobbs, NM 88241-1990

State of New Mexico
Energy, Minerals and Natural Resources Department

Form C-102
Revised February 10, 1994
Submit to Appropriate District Office
State Lease - 4 Copies
Fee Lease - 3 Copies

DISTRICT II
P.O. Drawer DD, Artesia, NM 88211-0719

OIL CONSERVATION DIVISION
P.O. Box 2088
Santa Fe, New Mexico 87504-2088

DISTRICT III
1000 Rio Brazos Rd., Aztec, NM 87410

AMENDED REPORT

DISTRICT IV
P.O. Box 2088, Santa Fe, NM 87504-2088

WELL LOCATION AND ACREAGE DEDICATION PLAT

API Number	Pool Code 58300	Pool Name Teague Blinebry
Property Code	Property Name C. E. LAMUNYON	Well Number 54
OGRID No. 962	Operator Name ARCH PETROLEUM INC.	Elevation 3292

Surface Location

UL or lot No.	Section	Township	Range	Lot Idn	Feet from the	North/South line	Feet from the	East/West line	County
D	22	23 S	37 E		1300	NORTH	660	WEST	LEA

Bottom Hole Location If Different From Surface

UL or lot No.	Section	Township	Range	Lot Idn	Feet from the	North/South line	Feet from the	East/West line	County

Dedicated Acres 40	Joint or Infill	Consolidation Code	Order No.
-----------------------	-----------------	--------------------	-----------

NO ALLOWABLE WILL BE ASSIGNED TO THIS COMPLETION UNTIL ALL INTERESTS HAVE BEEN CONSOLIDATED OR A NON-STANDARD UNIT HAS BEEN APPROVED BY THE DIVISION

	<p>OPERATOR CERTIFICATION</p> <p>I hereby certify the the information contained herein is true and complete to the best of my knowledge and belief.</p> <p><i>Bobbie Brooks</i> Signature</p> <p>Bobbie Brooks Printed Name</p> <p>Production Analyst Title</p> <p>8/15/95 Date</p>	
	<p>SURVEYOR CERTIFICATION</p> <p>I hereby certify that the well location shown on this plat was plotted from field notes of actual surveys made by me or under my supervision, and that the same is true and correct to the best of my belief.</p> <p>AUGUST 5, 1995 Date Surveyed</p> <p><i>Ronald J. Eidson</i> Signature & Seal Professional Surveyor</p> <p>NEW MEXICO W.O. Num 95-11-1206</p> <p>Certificate No. JOHN W. WEST, 676 RONALD J. EIDSON, 3239 GARY C. EIDSON, 12641</p>	
	<p>Professional Surveyor</p>	
	<p>Professional Surveyor</p>	

DISTRICT I
P.O. Box 1000, Hobbs, NM 88241-1000

DISTRICT II
P.O. Drawer DD, Artesia, NM 88211-0710

DISTRICT III
1000 Eio Brazos Ed., Artec, NM 87410

DISTRICT IV
P.O. Box 2088, Santa Fe, NM 87504-2088

State of New Mexico
Energy, Minerals and Natural Resources Department

Form C-102
Revised February 10, 1994
Submit to Appropriate District Office
State Lease - 4 Copies
Fee Lease - 3 Copies

OIL CONSERVATION DIVISION
P.O. Box 2088
Santa Fe, New Mexico 87504-2088

AMENDED REPORT

WELL LOCATION AND ACREAGE DEDICATION PLAT

API Number	Pool Code 58300	Pool Name Teague Blinebry
Property Code	Property Name C. E. LAMUNYON	Well Number 55
OGRID No. 962	Operator Name ARCH PETROLEUM INC.	Elevation 3295

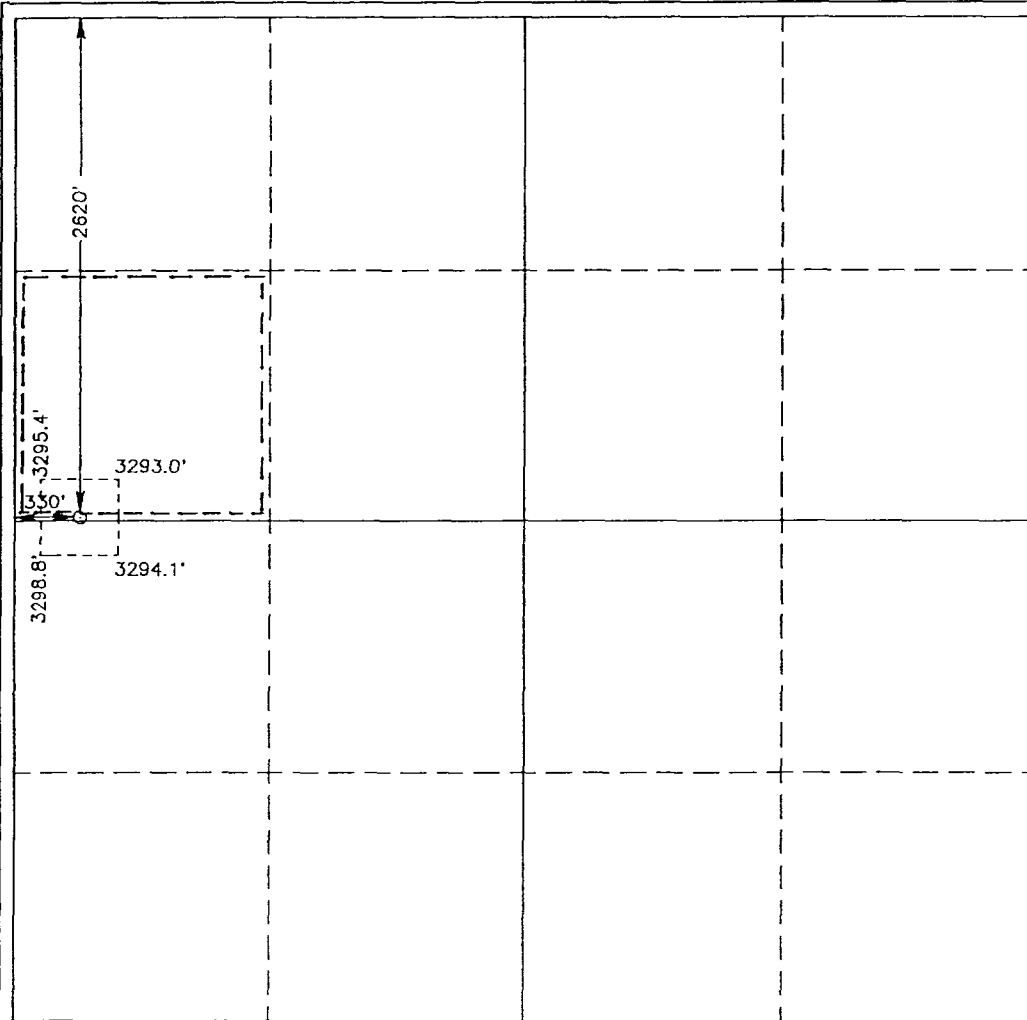
Surface Location

UL or lot No.	Section	Township	Range	Lot Idn	Feet from the	North/South line	Feet from the	East/West line	County
E	22	23 S	37 E		2620	NORTH	330	WEST	LEA

Bottom Hole Location If Different From Surface

UL or lot No.	Section	Township	Range	Lot Idn	Feet from the	North/South line	Feet from the	East/West line	County
Dedicated Acres 40		Joint or Infill	Consolidation Code		Order No.				

NO ALLOWABLE WILL BE ASSIGNED TO THIS COMPLETION UNTIL ALL INTERESTS HAVE BEEN CONSOLIDATED OR A NON-STANDARD UNIT HAS BEEN APPROVED BY THE DIVISION



OPERATOR CERTIFICATION

I hereby certify the the information contained herein is true and complete to the best of my knowledge and belief.

Bobbie Brooks
Signature

Bobbie Brooks
Printed Name

Production Analyst
Title

8/15/95
Date

SURVEYOR CERTIFICATION

I hereby certify that the well location shown on this plat was plotted from field notes of actual surveys made by me or under my supervision, and that the same is true and correct to the best of my belief.

AUGUST 5, 1995
Date Surveyed

JLP

Ronald J. Eidson
Signature & Seal of Professional Surveyor

8-8-95

W.O. Num 95-11-1207

Certificate No. JOHN W. WEST, 676
RONALD J. EIDSON, 3239
GARY C. EIDSON, 12641

DISTRICT I
P.O. Box 1960, Hobbs, NM 88241-1960

State of New Mexico
Energy, Minerals and Natural Resources Department

Form C-102
Revised February 10, 1994
Submit to Appropriate District Office
State Lease - 4 Copies
Fee Lease - 3 Copies

DISTRICT II
P.O. Drawer DD, Artesia, NM 88211-0719

OIL CONSERVATION DIVISION
P.O. Box 2088
Santa Fe, New Mexico 87504-2088

DISTRICT III
1000 Rio Brazos Rd., Artec, NM 87410

DISTRICT IV
P.O. Box 2088, Santa Fe, NM 87504-2088

AMENDED REPORT

WELL LOCATION AND ACREAGE DEDICATION PLAT

API Number	Pool Code 58300	Pool Name Teague Blinebry
Property Code	Property Name SALTMOUNT	Well Number 3
OGRID No. 962	Operator Name ARCH PETROLEUM INC.	Elevation 3297

Surface Location

UL or lot No.	Section	Township	Range	Lot Idn	Feet from the	North/South line	Feet from the	East/West line	County
P	21	23 S	37 E		990	SOUTH	1300	EAST	LEA

Bottom Hole Location If Different From Surface

UL or lot No.	Section	Township	Range	Lot Idn	Feet from the	North/South line	Feet from the	East/West line	County

Dedicated Acres	Joint or Infill	Consolidation Code	Order No.

NO ALLOWABLE WILL BE ASSIGNED TO THIS COMPLETION UNTIL ALL INTERESTS HAVE BEEN CONSOLIDATED OR A NON-STANDARD UNIT HAS BEEN APPROVED BY THE DIVISION

	<p align="center">OPERATOR CERTIFICATION</p> <p><i>I hereby certify the the information contained herein is true and complete to the best of my knowledge and belief.</i></p> <p><u>Bobbie Brooks</u> Signature</p> <p><u>Bobbie Brooks</u> Printed Name</p> <p><u>Production Analyst</u> Title</p> <p><u>8/15/95</u> Date</p>
	<p align="center">SURVEYOR CERTIFICATION</p> <p><i>I hereby certify that the well location shown on this plat was plotted from field notes of actual surveys made by me or under my supervision, and that the same is true and correct to the best of my belief.</i></p> <p align="center">AUGUST 5, 1995</p> <p>Date Surveyed JLP</p> <p>Signature & Seal of Professional Surveyor</p> <p align="right"><u>Ronald J. Eidson</u> 8-8-95</p> <p align="right">W.O. Num. 95-1E-209</p>
	<p>Certificate No. JOHN WEST, 676</p> <p align="right">RONALD J. EIDSON, 3239</p> <p align="right">GARY G. EIDSON, 12641</p>
	<p align="center">1300'</p> <p align="center">990'</p>



RYDER SCOTT COMPANY

PETROLEUM ENGINEERS

1100 LOUISIANA

SUITE 3800

HOUSTON, TEXAS 77002-5218

TELEPHONE (713) 651-9191

FAX (713) 651-0849

July 28, 1995

Arch Petroleum Inc.
777 Taylor, Suite II-A
Ft. Worth, Texas 76102

Attention: Mr. Mario E. Maldonado, P.E.

Re: Teague-Blinebry Reservoir
20 Acre Infill Well Analysis

Gentlemen:

Background

Arch Petroleum Inc. (Arch) has engaged Ryder Scott Company (Ryder Scott) to evaluate the benefit of drilling a 20 acre infill well within the Blinebry pool, in the Teague Field. The Teague Field is located in southeastern New Mexico in Lea County. The field is located on the northwest edge of the Central Basin Platform and was extensively drilled by the early 1970's with a typical well spacing of 40 acres. In 1989 an infill well (LaMunyon No. 50) was drilled by Chevron as a test well for evaluating future secondary recovery processes. Previous studies have suggested that the field is not being effectively drained on 40 acre spacing. This work evaluates the performance of the LaMunyon No. 50 well, and its effect on the original (40 acre) offset wells, to determine the incremental recovery associated with the drilling of the infill well.

Summary of Results

An evaluation of the production history of the recently drilled infill well (LaMunyon No. 50) in the Teague Blinebry reservoir indicates that incremental reserves can be recovered when the well spacing is reduced from 40 acres to 20 acres. LaMunyon No. 50, drilled in 1989, is expected to incrementally recover 55,385 STB oil (from the main Blinebry zones) which is approximately 65 percent of the recovery from the original 40 acre offset wells.

Discussion

Estimated ultimate recovery (EUR) in the main Blinebry reservoir was determined for well 50 and the four direct offset wells (wells 21, 24, 29, and 34). These EUR's were based on decline curve analysis, and the projections are displayed in Figures 1 through 5. The ultimate recovery for each offset well was estimated both before and after the infill well (well 50) was drilled, so that the reduction in EUR for the offsets due to the presence of well 50 could be determined. This amount of reduced recovery in the offset wells was then subtracted from the EUR of well 50, to determine the incremental reserves from well 50.

Two wells (No 21 and 50) have produced from the uppermost lobe of the Blinebry, as well as from the main Blinebry reservoir. Since most wells in the field have not produced from the uppermost lobe, we restricted our analysis of infill potential to the main Blinebry. Thus, the estimated EUR for the uppermost lobe was removed from the total, to calculate the EUR from the main Blinebry, for these two wells.

Fracture stimulations have recently been performed on the main pay for wells 24, 34 and 50. Because there are insufficient performance data at this time to determine the effect of these stimulations on the EUR's of these wells, we limited our analysis to well performance prior to the fracture stimulations.

Table 1 (attached) provides a summary of the expected recoveries from all wells and the expected incremental recovery from well 50. The key results for the main Blinebry reservoir are summarized below:

Average EUR for offset wells (Original 40 acre spacing)	85,130 STB
EUR for Well 50 (20 Acre Infill Well)	62,160 STB
Incremental EUR for Well 50 (Net Increase Due to Well 50)	55,385 STB
Percent of EUR for Infill vs Original Offsets	65%

To check the reasonableness of the above results, an average oil recovery factor for the pattern was determined. The recovery efficiency calculations are summarized below:

Total Allocated EUR for Pattern (All Wells)	145,597 STB
Total OOIP for Pattern (38.35 Acres)	1,411,002 STB
Overall Oil Recovery Efficiency	10.3%

The overall recovery efficiency obtained is reasonable for an oil reservoir primarily under depletion drive. Using this average recovery efficiency, drainage areas for the offset wells and the infill well were calculated. These are listed in Table 1 and are graphically displayed, along with the well locations, in Figure 6.

Very truly yours,

RYDER SCOTT COMPANY
PETROLEUM ENGINEERS


Dean C. Rietz, P.E.
Petroleum Engineer

DCR/sw

Approved:



Kent A. Williamson, P.E.
Group Vice President

Table 1

**Arch Petroleum
C.E. LaMunyon Lease
20 Acre Infill Well Analysis**

Well	Main Pay	Main Pay	Change in	R.F. = 10.3%	
	EUR without Well No. 50 (STB)	EUR with Well No. 50 (STB)	EUR due to well # 50 (STB)	Drainage Radius (ft)	Drainage Area, R.F. (acres)
21	75,009	75,150	141	393	11.1
24	46,250	45,936	-314	415	12.4
29	97,316	97,336	20	486	17.0
34	121,946	115,324	-6,622	504	18.3
Average	85,130				
50		62,160	62,160	635	29.1
Total			55,385		
Pattern Allocated		145,597	55,385		

The above recoveries show that the LaMunyon 50 is expected to recover 65% (55,385/85,130) of the EUR for the original 40 acre offset wells.

The pattern OOIP is calculated to be 1,411,002 STB for the 38.35 acre pattern. The OOIP calculations assume $B_O = 1.23^{rb}/_{STB}$, $S_W = 19.1\%$ and pattern average values of thickness and porosity of 95.6 ft and 7.5%, respectively. With the pattern allocated EUR of 145,597 STB, the recovery factor (R.F.) is calculated to be 10.3%. This pattern R.F. is used to estimate the drainage radius and area of each well.

000021

LEASE : C E LAMUNYON
FIELD : TEAGUE (BLINEBRY) BL
COUNTY : LEA
RESERVOIR : BLINEBRY

RYDER SCOTT COMPANY

STATE : NM

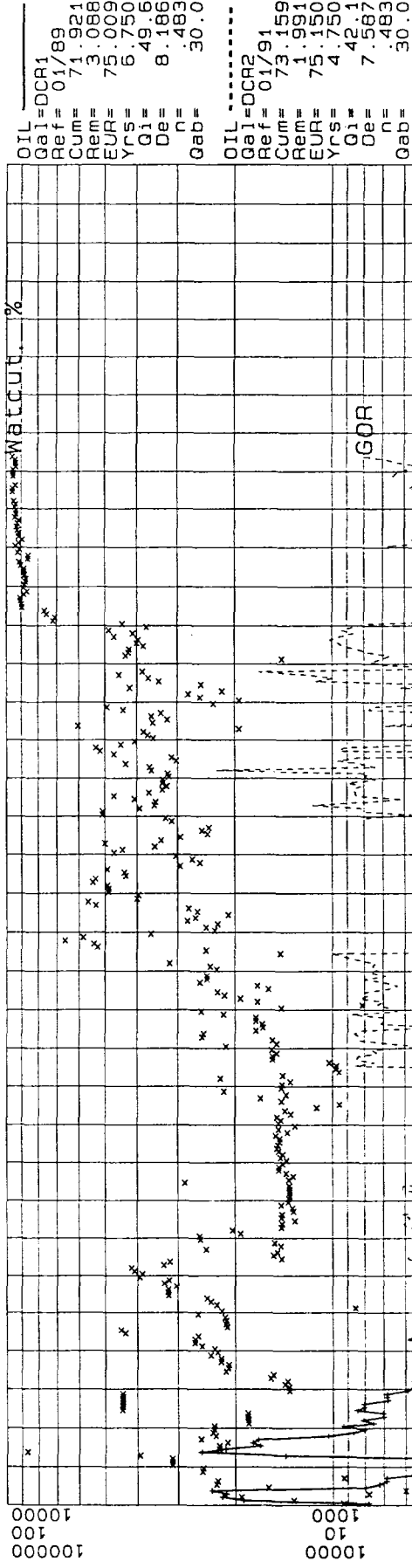


Figure 1

000024

LEASE : C E LAMUNYON
FIELD : TEAGUE (BLINEBRY) BL
COUNTY : LEA
RESERVOIR : BLINEBRY

RYDER SCOTT COMPANY

STATE : NM

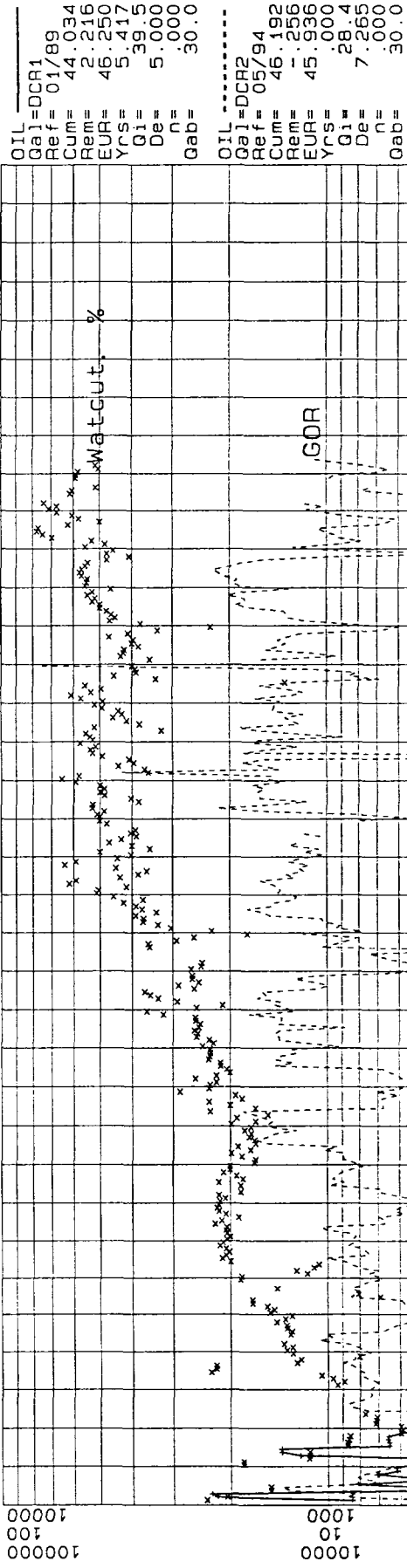


Figure 2

000029

LEASE : C E LAMUNYON
FIELD : TEAGUE (BLINEBRY) BL
COUNTY : LEA
RESERVOIR : BLINEBRY

RYDER SCOTT COMPANY

STATE : NM

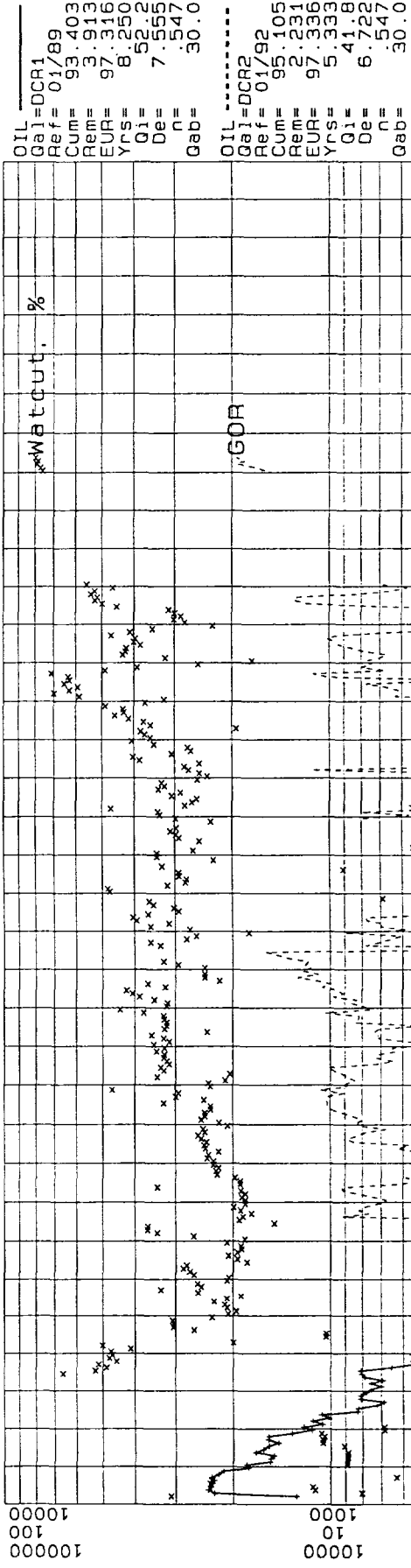


Figure 3

RYDER SCOTT COMPANY
 LEASE : C E LAMUNYON
 FIELD : TEAGUE (BLINEBRY) BL
 COUNTY : LEA
 RESERVOIR : BLINEBRY
 STATE : NM
 000034

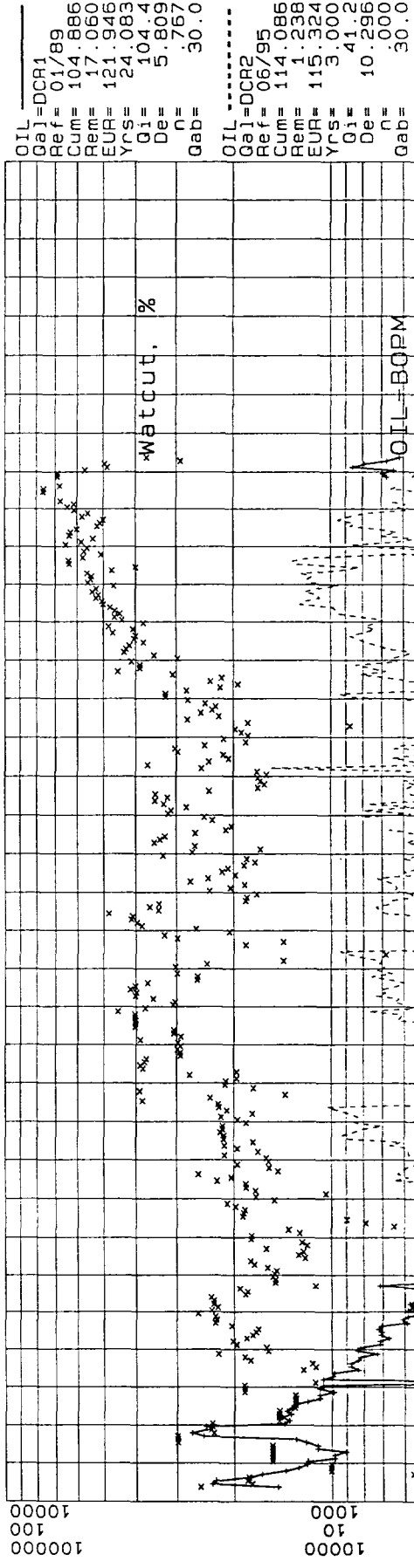


Figure 4

000050

LEASE : C E LAMUNYON
FIELD : TEAGUE (BLINEBRY) BL
COUNTY : LEA
RESERVOIR : BLINEBRY
STATE : NM

RYDER SCOTT COMPANY

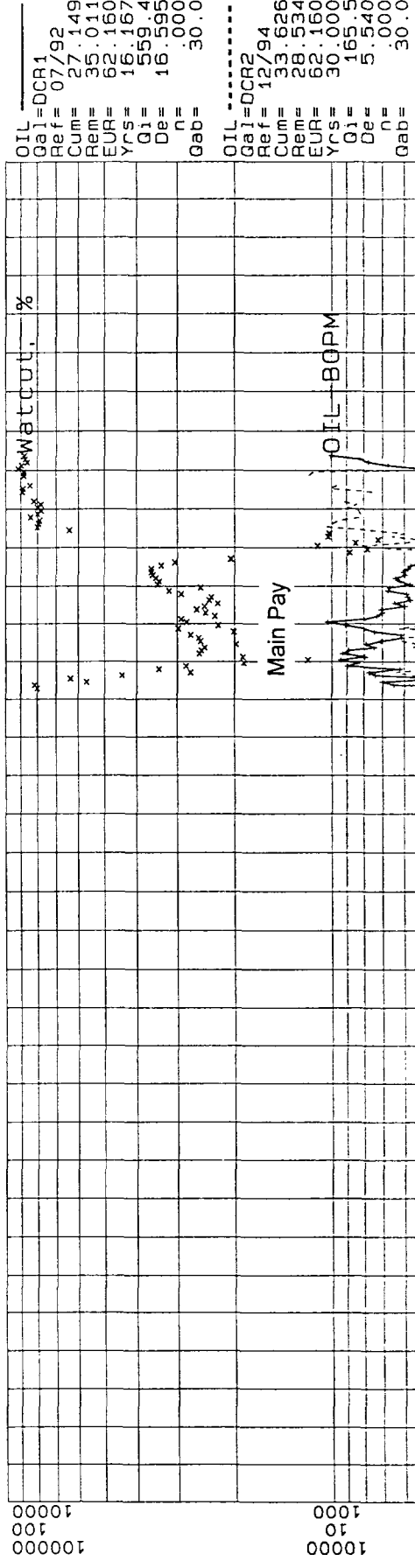
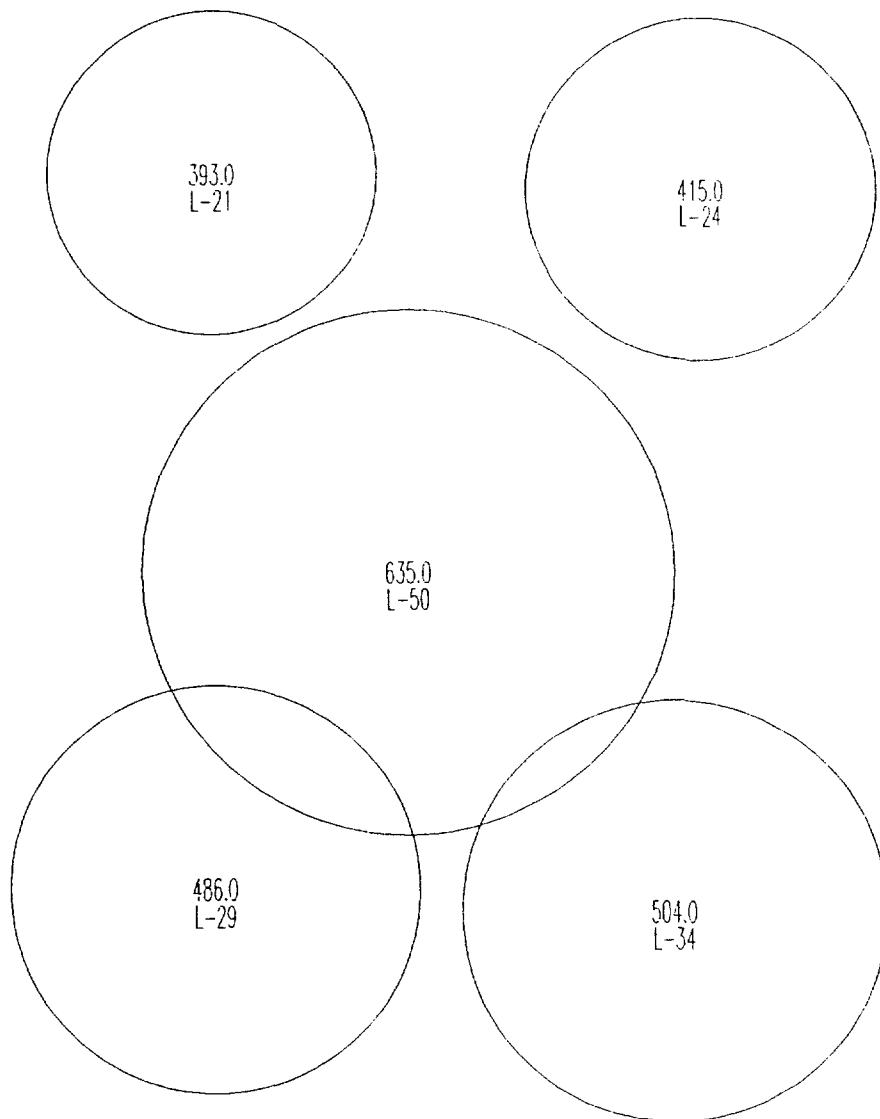


Figure 5



RYDER SCOTT COMPANY PETROLEUM ENGINEERS HOUSTON, TEXAS	
Figure 6 Arch Petroleum Inc. C.E. LaMunyon Lease 20 Acre Infill Well Analysis Drainage Radius (R.F.=10.3%)	
SCALE:	

TEAGUE BLINEBRY FIELD - INFILL WELLS				
Estimated Ultimate Recovery-Drainage Radius				
Current Well	Net Pay, h net, ft.	Est. Ultimate Primary Rec., MSTB	Drainage Acres	Drainage Radius, ft.
GG Travis 2	126	151.3	21.4	545
GG Travis 3	137	112.7	14.7	451
Lamunyon 20	143	58.9	7.3	319
Lamunyon 21	125	111.7	15.9	470
Lamunyon 23	101	76.5	13.5	433
Lamunyon 24	101	55.0	9.7	367
Lamunyon 25	119	134.0	20.1	528
Lamunyon 27	168	177.2	18.8	511
Lamunyon 29	119	95.1	14.3	445
Lamunyon 30	90	109.7	21.7	549
Lamunyon 33	148	114.9	13.9	438
Lamunyon 34	113	137.7	21.7	549
Lamunyon 35	84	37.7	8.0	333
Lamunyon 36	96	59.9	11.1	393
Lamunyon 37	113	184.6	29.1	636
Lamunyon 40	179	158.9	15.8	469
Lamunyon 42	137	124.3	16.2	474
Lamunyon 43	104	24.8	4.3	243
Lamunyon 44	213	135.7	11.4	397
Lamunyon 50*	123	64.6	9.4	360
Saltmount 1	168	124.7	13.2	429
Saltmount 2	119	73.2	11.0	390
Seeton 1	187	221.9	21.2	542
Total/Average	3,013	2,545.0	15.1	457
Assumes: Swi=18%, Avg. Porosity=7.4%, Boi=1.26 RB/STB Recovery Factor=15%				
* Only 20-Acre Infill to date				

**BEFORE THE
OIL CONSERVATION DIVISION
Santa Fe, New Mexico**

Case No. 11344 Exhibit No. 9

Submitted by: Arch Petroleum Inc.

Hearing Date: August 24, 1995