

PH 17
215-20#



Oryx Energy Company

Indian Basin Field

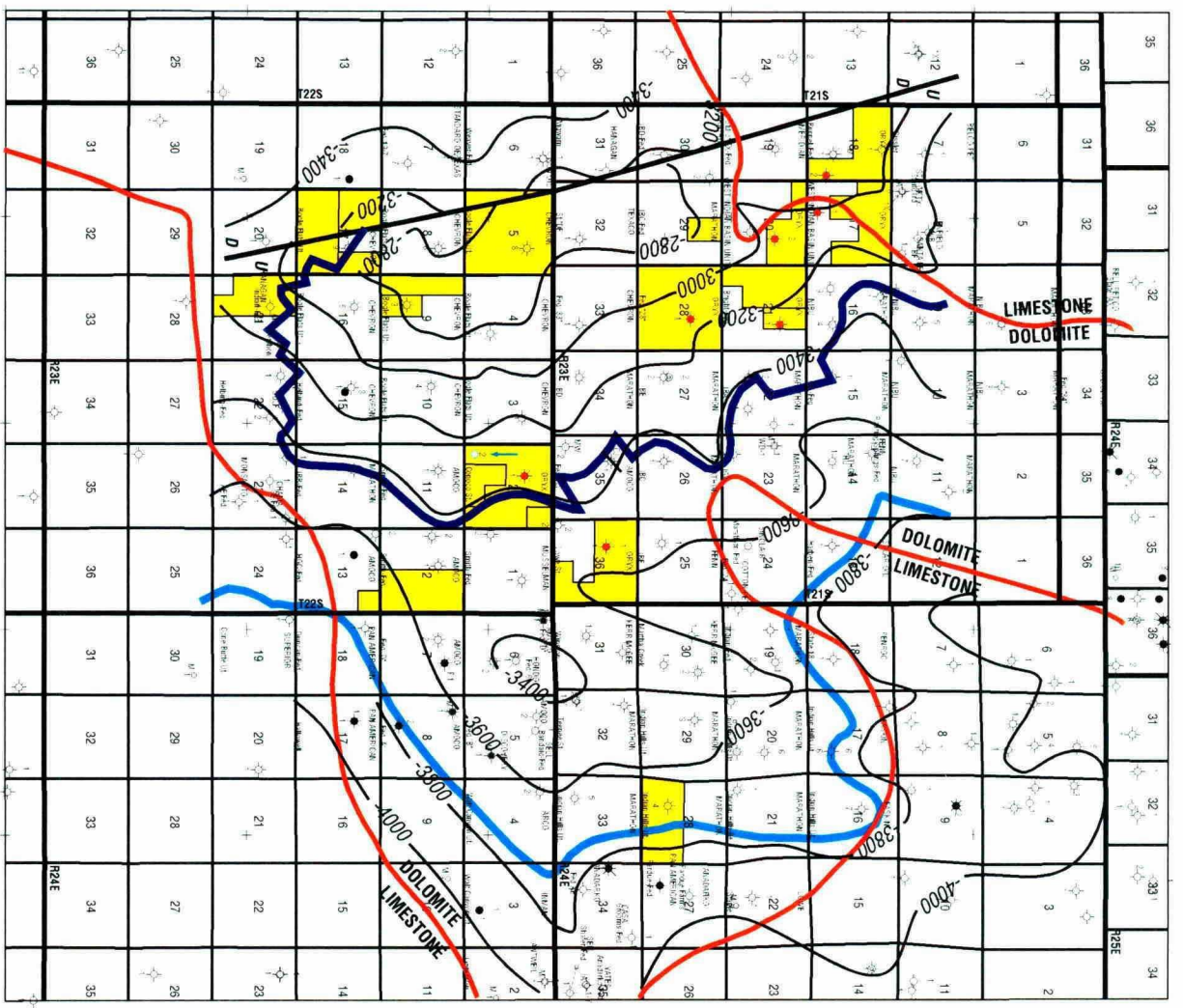
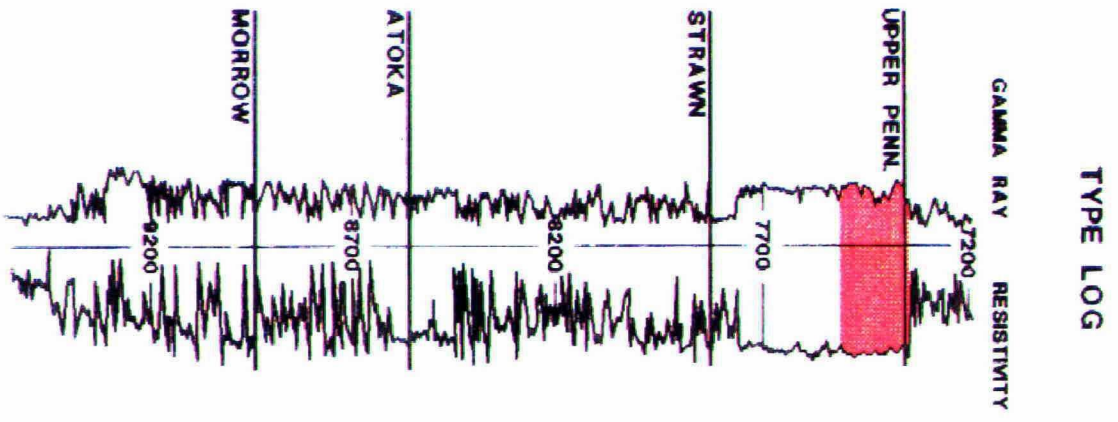
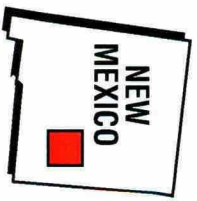
Eddy County, New Mexico

Operator Map



Proposed Oryx Energy
Conoco State #2

ORyx ENERGY COMPANY - BEFORE
EXAMINER: _____
N.M. OIL CONSERVATION DIVISION
CASE NO. 11189
EXHIBIT NO. 2
DATE _____



Structure - Top of Upper Penn Reservoir

- (-3778) Original Estimated Gas/Wtr Contact
- (-3450) Present Estimated Gas/Wtr Contact
- Oryx Operated Cisco Gas Wells
- Oryx Acreage
- Dolomite/Limestone Boundary