

NEW MEXICO
OIL CONSERVATION DIVISION

Titan EXHIBIT 3

CASE NO. 11358 (de novo)

COMPANY: Yates Petroleum Corporation

WELL: Ross "EG" Federal #14

FIELD: North Dagger Draw

COUNTY: Eddy STATE: New Mexico

COUNTY: Eddy Field: North Dagger Draw Location: 660' FNL and 1980' FEL Well: Ross "EG" Federal #14 Company: Yates Petroleum Corporation	Schlumberger		LithoDensity Compensated Neutron NGT Gamma Ray	
	LOCATION: 660' FNL and 1980' FEL		Elev	K.B. 3507 F
				G.L. 3489 F
				D.F. 3506 F
Permanent Datum: _____		Ground Level: _____	Elev.: 3489 F	
Log Measured From: _____		Kelly Bushing	18.0 F above Perm. Datum	
Drilling Measured From: _____		Kelly Bushing		
API Serial No. _____		SECTION 21	TOWNSHIP 19S	RANGE 25E
Logging Date		16-Oct-1995		
Run Number		One		
Depth Driller		8350 F		
Schlumberger Depth		8332 F		
Bottom Log Interval		8332 F		
Top Log Interval		200 F		
Casing Driller Size @ Depth		9.625 IN @	1160 F	@
Casing Schlumberger		1160 F		
Bit Size		8.750 IN		
Type Fluid in Hole		Oil Brine		
MUD	Density	Viscosity	9.9 LB/G	34.5
	Fluid Loss	PH	12 C3	10
Source Of Sample		Circulation Tank		
RM @ Measured Temperature		0.133 OHMM @	75 DEGF	@
RMF @ Measured Temperature		0.133 OHMM @	75 DEGF	@
RMC @ Measured Temperature		@	75 DEGF	@
Source RMF		RMC	Measured	Calculated
RM @ MRT		RMF @ MRT	0.077 @ 135	0.077 @ 135 @ @
Maximum Recorded Temperatures		135 DEGF		
Circulation Stopped Time		16-Oct-1995	1800	
Logger On Bottom Time		16-Oct-1995	2230	
Unit Number		Location: 3005 Roswell, NM		
Recorded By		Tony DeRubeis		
Witnessed By		Brent May / Ken Billings		

7600

-4163

675 39"
TSTM

7700

Rec.
No Oil
1084' FW

675
15"
F235MKFID
Rec.
3768' FO
365 DM

-4221
@ MESPULFP

675 18"
455 MKFID
Rec.
2275' FO
70' FW

@ 295 PSLFP

TENS

7800

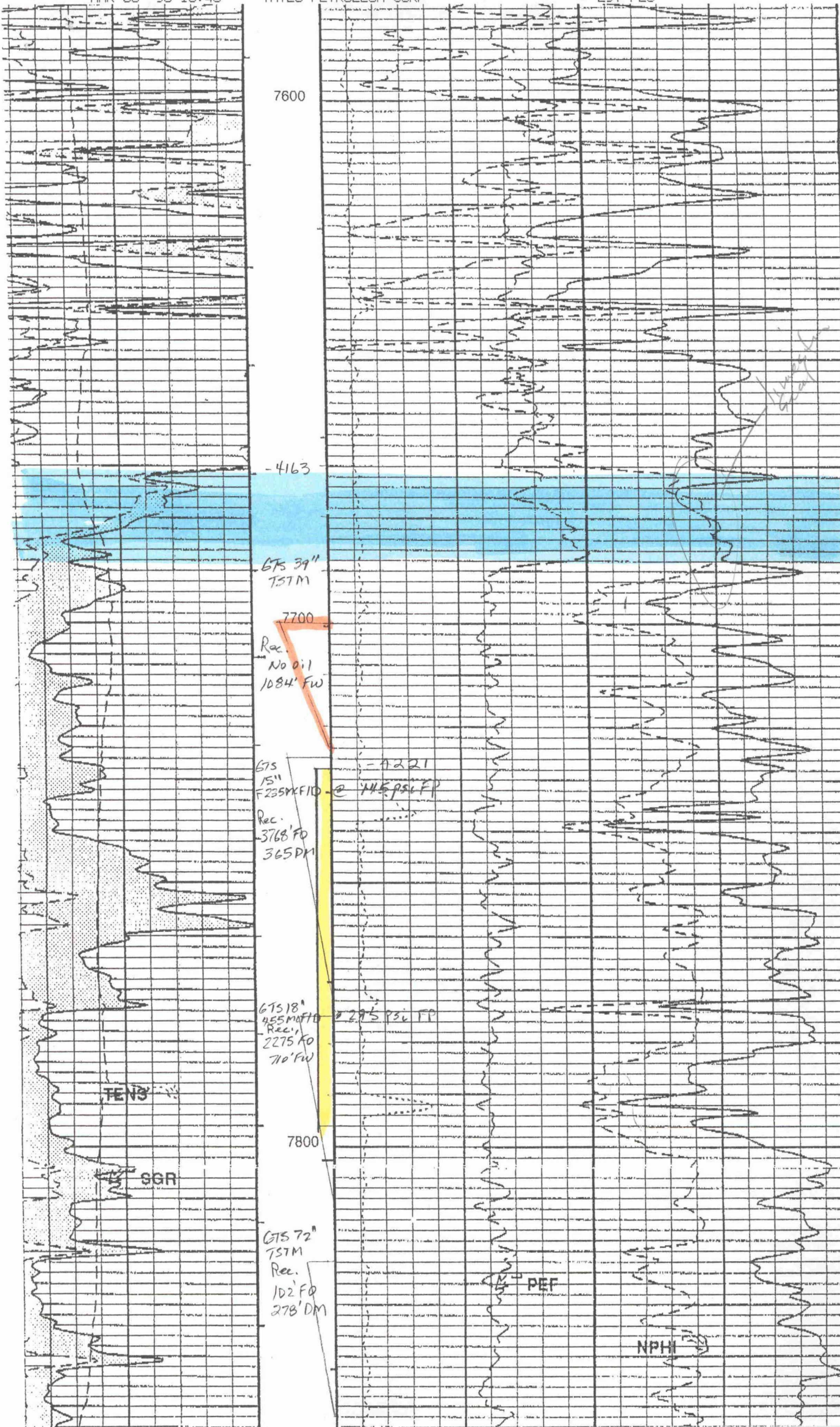
SGR

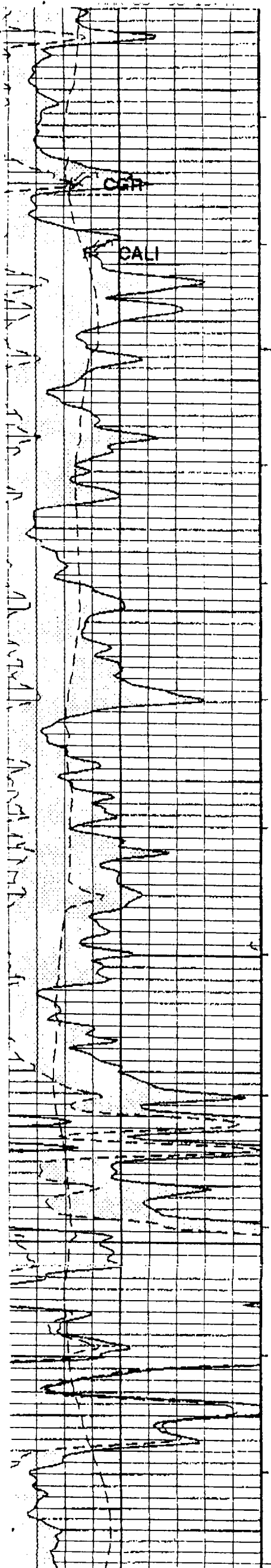
675 72"
TSTM
Rec.
102' FO
278' DM

PET

NPHI

Handwritten notes: "Lined" and "Good"

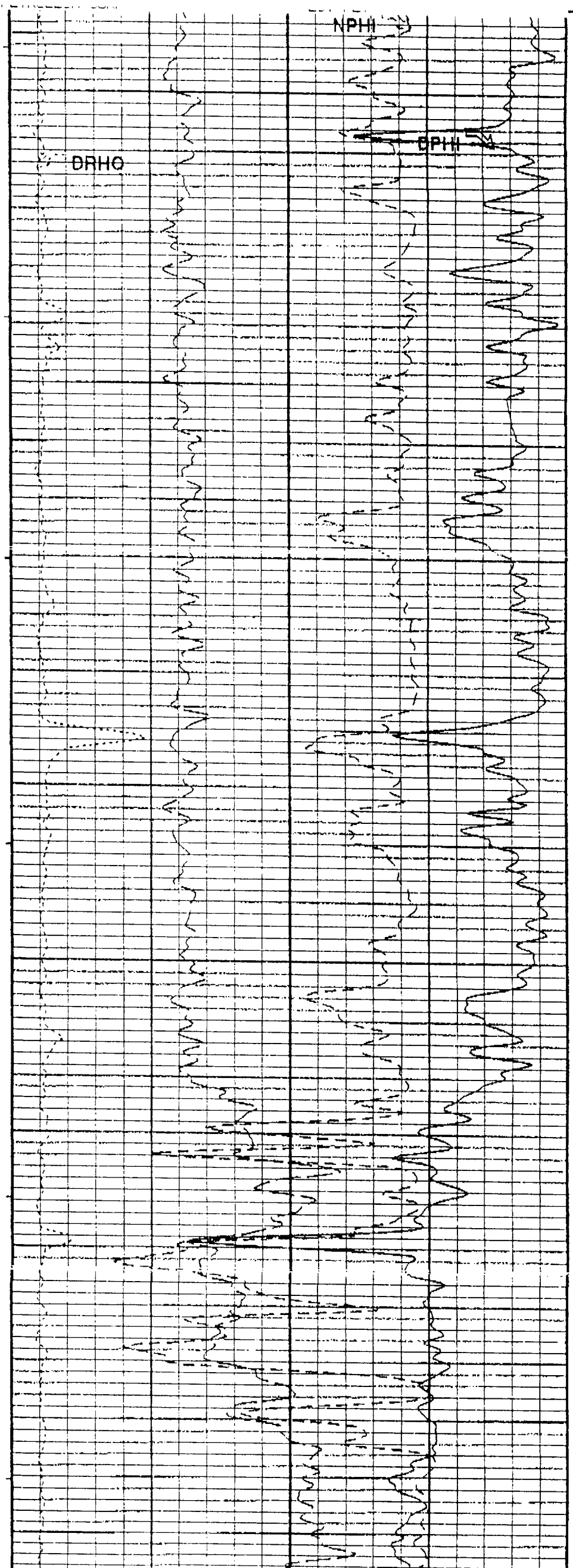




7900

8000

8100



DRHO

NPHI

DPHI

DRILLING REPORT

Yates Petroleum - Moss "EG" Federal #14 (Unit B) 21-19S-25E Eddy Co., NM

Stage I: 500 sacks Super "H" + 8#/sx gilsonite + 3#/sx salt + 4/10% Halad-9 + 1/4#/sx flocele (yield 1.65, weight 13.5). PD at 10:00 AM 10-18-95. Bumped plug to 1800 psi for 1 min. Circulated 152 sacks. Circulated thru DV tool 3-1/2 hours. Stage II: 800 sacks Halliburton Lite + 5#/sx salt + 4/10% Halad-9 + 1/4#/sx flocele (yield 2.09, weight 12.4). Tailed in with 100 sacks Class "H" Neat (yield 1.18, weight 15.6). PD at 3:20 PM 10-18-95. Bumped plug to 3300 psi for 1 mins. Circulated 169 sacks. Float and casing held OK. Rig released at 8:00 PM 10-18-95.

10-20-95
10-21-23-95
10-24-95
10-25-95
10-26-95
10-27-95
10-28-30-95
10-31-95

Waiting on completion unit.
Waiting on completion unit.
Waiting on completion unit.
Waiting on completion unit.
Waiting on completion unit.
Waiting on completion unit.
Move in service unit to complete Canyon.
Cleaned location. Set anchors. Moved in and rigged up pulling unit and reverse unit. TIH with 6-1/8" bit, stabilizer, 4 - 4-3/4" drill collars, 2-7/8" J-55 tubing. Drilled DV tool at 6003'. Tested 2000 psi. TIH and tagged PBSD at 8305'. Displaced hole with 2% KCL. TOH. Laid down drill collars. TIH with bit and scraper thru DV tool. TOH. Rigged up wireline. Logged GR/CBL 8305-5900' with 1000 psi. Prep to perf and acidized. DC \$8047
11-1-95
TIH with 4" casing gun. Correlated on depth. Perforated 7728-7796' (23 - .42" holes). TOH with guns. TIH with 7" Uni V packer. Set at 7675'. Break down perfs at 3800 psi. Acidized with 2500 gals 20% NEFE with 33 balls. Avg 5 BPM, avg 2250#. Balled out 4300#. Avg 3 mins. Acidized with 20,000 gals 20% NEFE gelled acid. Avg 8 BPM @ 2000 psi. ISDP 800. Vacuum 11 mins. Started swab. Total load to recover 606 bbls. Prep to hang on pump today. DC \$20,570

TIME	FL	#SR	OIL	WATER
5 PM	1500'	5		24
6 PM	1500'	5		20
7 PM	1500'	5		22
8 PM	1500'	4	3%	20
9 PM	1700'	4	3%	18
10 PM	1900'	4	5%	18
11 PM	2000'	4	5%	19
12 AM	2100'	4	5%	19
1 AM	2400'	4	5%	20
2 AM	2800'	3	7%	19
3 AM	3000'	3	7%	20
4 AM	3300'	3	7%	15
5 AM	3500'	3	7%	17
6 AM	3500'	3	7%	17

Recovered 270 bbls, 336 bbls left to recover.

11-2-95

Loaded tubing. Released packer. TOH. Nippled down manual BOP. Nippled up hydril. Turned well to production to run sub pump. Pumped 435 bbls oil, 664 bbls water and 408 MCFD in 11 hours. DC \$3571

11-3-95
11-4-95
11-5-95
11-6-95
11-7-95
11-8-95
11-9-95
11-13-95

Pumped 1540 bbls oil, 880 bbls water and 1469 MCF.
Pumped 1663 bbls oil, 817 bbls water and 1189 MCF.
Pumped 1377 bbls oil, 835 bbls water and 1088 MCF.
Pumped 1342 bbls oil, 861 bbls water and 1020 MCF.
Pumped 1276 bbls oil, 887 bbls water and 1049 MCF.
Pumped 1163 bbls oil, 959 bbls water and 1049 MCF.
Pumped 1117 bbls oil, 1010 bbls water and 1049 MCF.
TD 8350'; PBSD 8305'. On a 24 hour Official Potential test taken 11-3-95, well pumped 435 BOPD, 408 MCFD and 664 BWPD at a GOR of 938:1 and Gravity 42.6 deg, thru perf 7728-7796' Canyon. Well is Producing. FINAL REPORT.

Production

	Oil BBL	Gas (MCF)	Water, EPD	Days	
1/96	11026	556	21987	830	31
12/95	16479	532	25304	816	31
	14679	500	26425	711	29