



LOCATOR MAP
 Nearburg Producing Company
 Exploration and Production
 Dallas, Texas

TRIGG "29" FEDERAL COMM. #1


CASE # 11377

Hearing Date: September 7, 1935
 Case No. 1377 Exhibit No. 1
 Nearburg Exploration Company

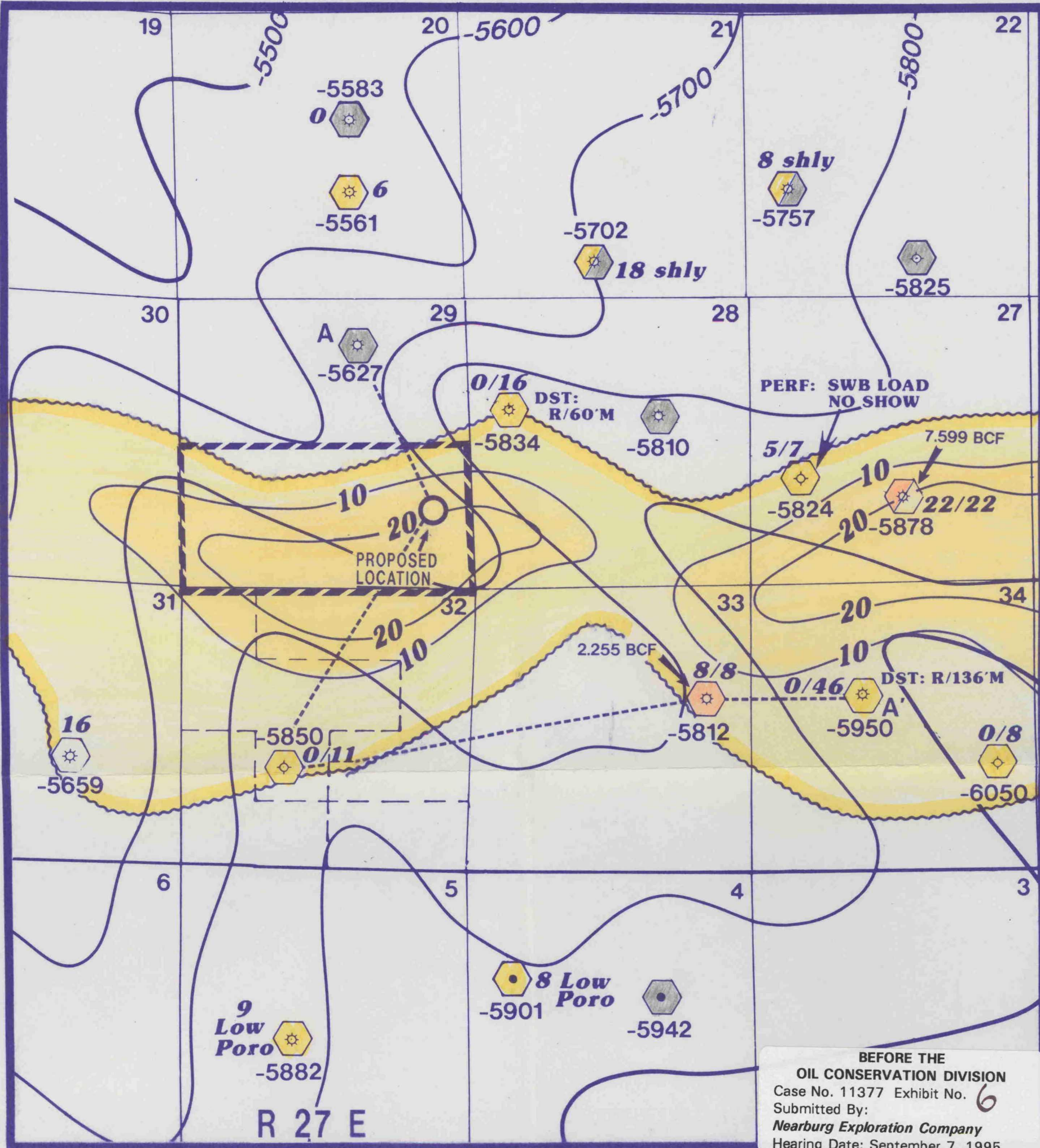
GEOLOGY BY	DATE	DRAWN BY	FILE NO.

TRIGG "29" FEDERAL COM. #1
 1400' FSL & 750' FWL
 SECTION 29, T-17-S, R-27-E
 EDDY COUNTY, NEW MEXICO

OFFSETING OWNERS

29			MURCHISON OIL AND GAS UNION PACIFIC OIL & GAS AMERICAN TRADING & PRODUCTION CO. JUDY B. CURLEY, OIL & GAS ACCT. DOUGLAS L. CONE	28
NEARBURG EXPL. CO	NEARBURG EXPL. CO.	NEARBURG EXPL. CO.	MURCHISON OIL AND GAS	
		 PC, LTD EUGENE NEARBURG TO BS. SAN ANDRES		
32			NEARBURG EXPL. CO. ATLANTIC RICHFIELD CO. DEVON ENERGY CORP.	33
			NEARBURG EXPL. CO. DEVON ENERGY CORP. AMOCO PROD. CO.	

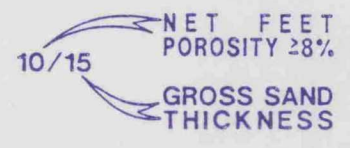
**BEFORE THE
 OIL CONSERVATION DIVISION**
 Case No. 11377 Exhibit No. **2**
 Submitted By:
Nearburg Exploration Company
 Hearing Date: September 7, 1995



BEFORE THE
 OIL CONSERVATION DIVISION
 Case No. 11377 Exhibit No. 6
 Submitted By:
 Nearburg Exploration Company
 Hearing Date: September 7, 1995

LEGEND

- SS PRODUCTIVE
- SS PRODUCTIVE (W/OTHER SS)
- SS LOW POROSITY
- SS SHALEY/HIGH GR
- SS ABSENT/SHALE
- SS WET



Nearburg Producing Company
 Exploration and Production
 Dallas, Texas

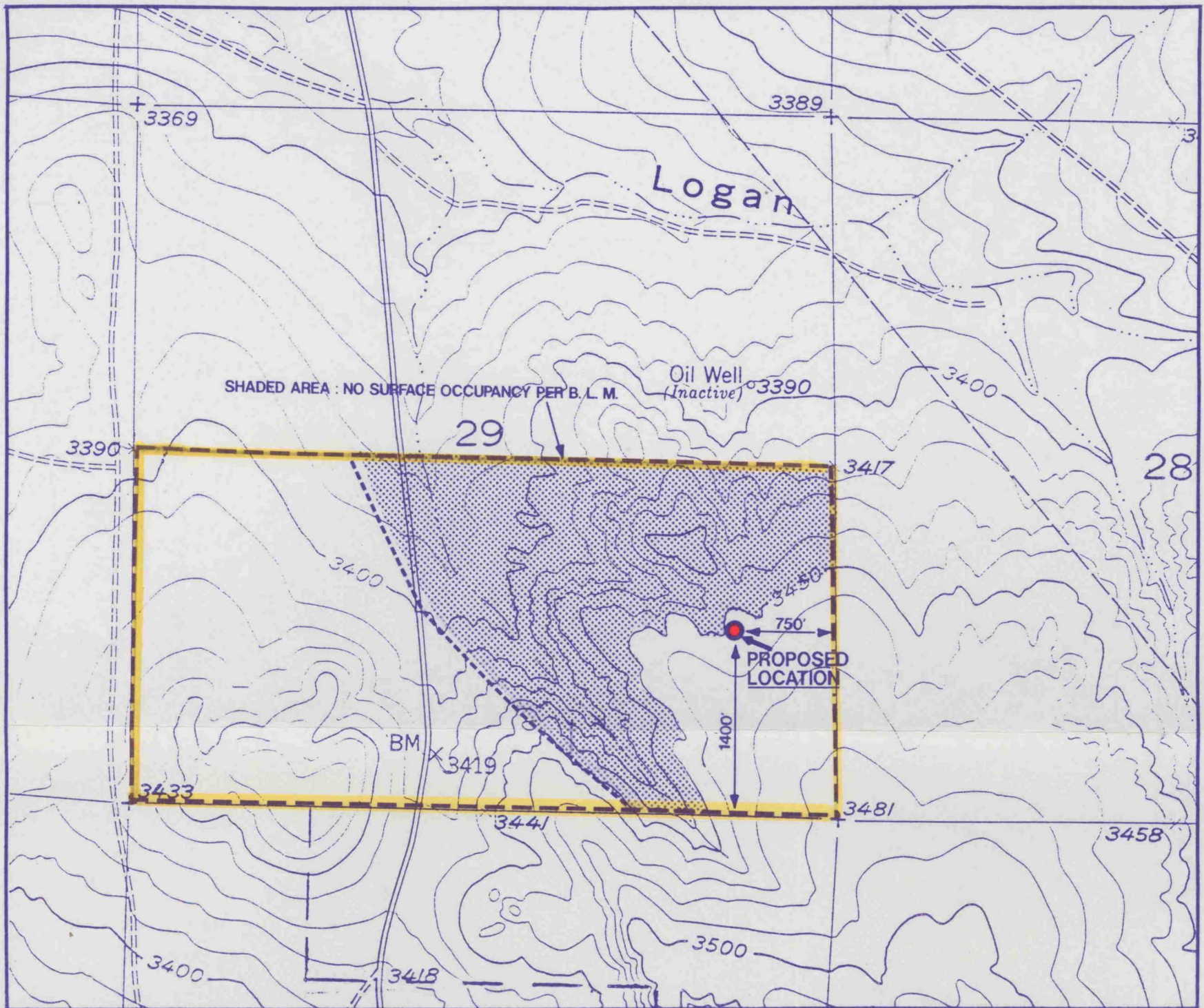
TRIGG FEDERAL COM. "29" #1
 EDDY COUNTY, NEW MEXICO
STRUCTURE MAP
TOP/LOWER MORROW
 CONTOUR INTERVAL 100'

EARLY MIDDLE MORROW
 GROSS SAND ISOPACH OUTLINE
 W/NET POROUS FEET OF SAND
 (8% POROSITY CUTOFF)

GEOLOGY BY	DATE	DRAWN BY	FILE NO
J.B.ELGER	9/95	J.K.B.	



LARGE FORMAT
EXHIBIT HAS
BEEN REMOVED
AND IS LOCATED
IN THE NEXT FILE



SCALE : 1" = 1000'

SHADED AREA : NO SURFACE
OCCUPANCY PER B. L. M.

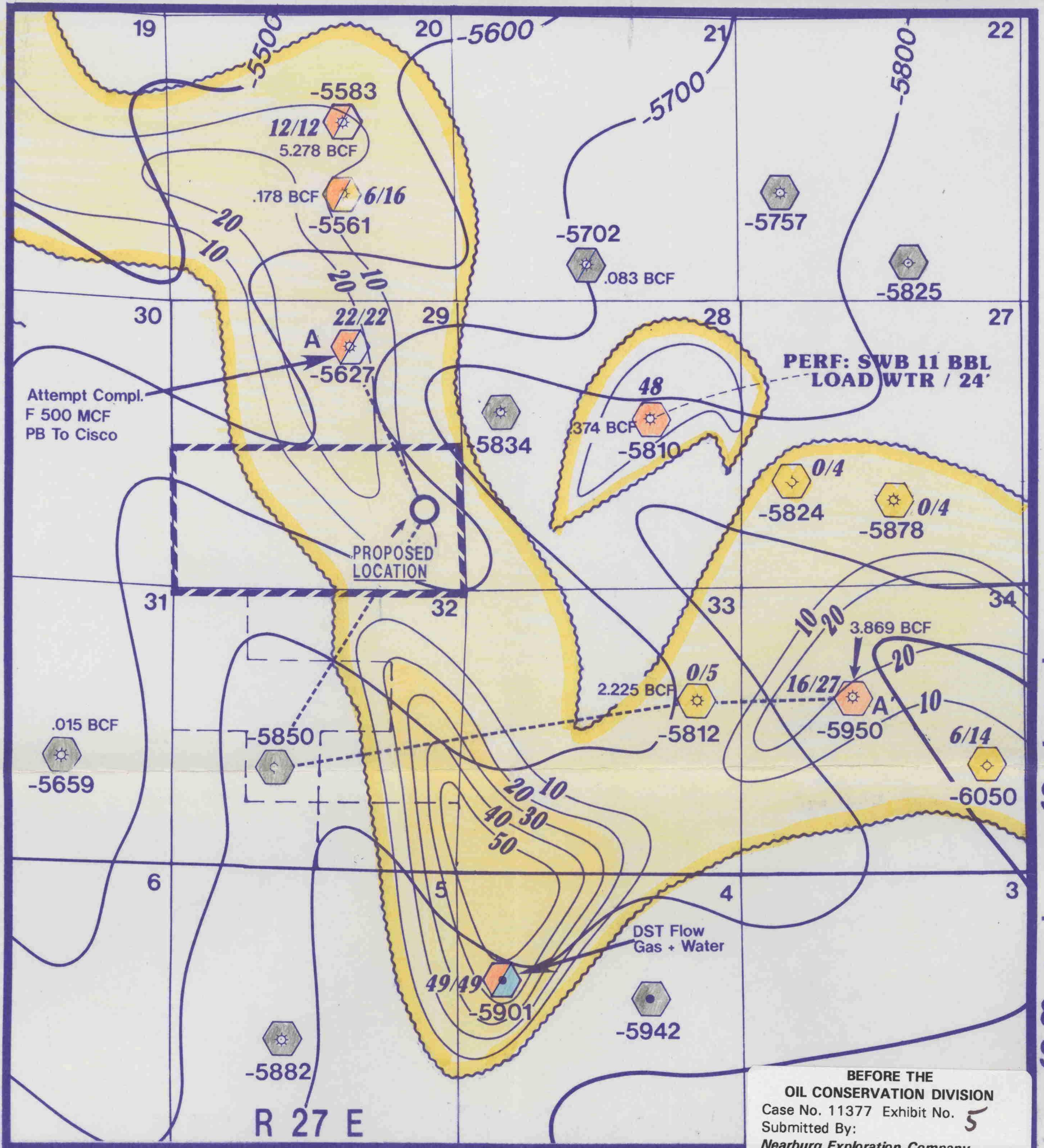
BEFORE THE
OIL CONSERVATION DIVISION
Case No. 11377 Exhibit No. **3**
Submitted By:
Nearburg Exploration Company
Hearing Date: September 7, 1995

Nearburg Producing Company
Exploration and Production
Dallas, Texas

TRIGG FEDERAL COMM. "29" #1
EDDY COUNTY, NEW MEXICO

U. S. G. S. TOPOGRAPHIC MAP
SEC. 29, T-17-S R-27-E

GEOLOGY BY	DATE	DRAWN BY	FILE NO.
J. B. Elger	9/95	L.C.G.	



LEGEND

- SS PRODUCTIVE
- SS PRODUCTIVE (W/OTHER SS)
- SS LOW POROSITY
- SS SHALEY/HIGH GR
- SS ABSENT/SHALE
- SS WET

NET FEET POROSITY 28%
 GROSS SAND THICKNESS
 10/15



Nearburg Producing Company
Exploration and Production
Dallas, Texas

TRIGG FEDERAL COM. "29" #1
 EDDY COUNTY, NEW MEXICO
STRUCTURE MAP
TOP / LOWER MORROW
 CONTOUR INTERVAL 100'
EARLY LOWER MORROW
 GROSS SAND ISOPACH OUTLINE
 W/NET POROUS FEET OF SAND
 (8% POROSITY CUTOFF)

GEOLOGY BY	DATE	DRAWN BY	FILE NO.
J.B.ELGER	9/95	J.K.B.	