

RICHMOND PETROLEUM INC.
4925 GREENVILLE AVENUE, #925
DALLAS, TEXAS 75206
214-696-5544

May 5, 1995

RECEIVED
MAY 10 1995
OIL CON. DIV.
DIST. 3

State of New Mexico
Energy, Minerals and Natural Resources
1000 Rio Brazos Road
Aztec, New Mexico 87410

Re: Richmond Petroleum Inc.
Navajo Lake 32-6 #1

Gentlemen:

You have requested the above well to be plugged. However, we have no knowledge of that well.

Richmond sold all of its properties in New Mexico in December 1993 and January 1994 and no longer operates any oil and gas well in New Mexico.

Please contact us if you have any questions.

Sincerely,

Paul G. Smittle

Paul G. Smittle

BEFORE EXAMINER STOGNER
OIL CONSERVATION DIVISION
OCD EXHIBIT NO. 1
CASE NO. 11380

(1)



STATE OF NEW MEXICO
ENERGY, MINERALS AND NATURAL RESOURCES DEPARTMENT
OIL CONSERVATION DIVISION
AZTEC DISTRICT OFFICE



GARY E. JOHNSON
GOVERNOR

JENNIFER A. SALISBURY
CABINET SECRETARY

1000 RIO BRAZOS ROAD
AZTEC, NEW MEXICO 87410
(505) 334-6178 FAX: (505) 334-6170

May 22, 1995

Certified: P 987 892 143

Sovereign Oil Co
2885 E Aurora Ave Ste 31
Boulder Co 80303

Soveriegn Oil Co
7490 Clubhouse Rd Ste 102
Boulder Co 80301

RE: Navajo Lake 32-6 #1, E-09-32N-06W, #30-045-25790, 900 FWL/1730 FNL

To whom it may concern:

The referenced well is in violation of rule #201 & #203. Therefore you are hereby directed to plug and abandon, return well to production or temporarily abandon it under rule #203 within 30 days.

If you fail to bring the well into compliance, we will schedule a show cause hearing as to why the well should not be plugged and abandoned.

Sincerely,

Johnny Robinson
Deputy Oil & Gas Inspector

JR/sh

cc: Rand Carroll
well file
Allied Fidelity Insurance Co



STATE OF NEW MEXICO

ENERGY, MINERALS AND NATURAL RESOURCES DEPARTMENT

OIL CONSERVATION DIVISION
AZTEC DISTRICT OFFICE



GARY E. JOHNSON
GOVERNOR

JENNIFER A. SALISBURY
CABINET SECRETARY

1000 RIO BRAZOS ROAD
AZTEC, NEW MEXICO 87410
(505) 334-6178 FAX: (505) 334-6170

April 20, 1995

Certified: P 987 892 137

Allied Fidelity Insurance Co
PO Box 3549
Littleton CO 80161

Richmond Pet Inc
2651 N Harwood Ste 500
Dallas TX 752013

RE: Navajo Lake 32-6 #1, E-09-32N-06W, #30-045-25790, 900 FWL/1730 FNL

To whom it may concern:

The referenced well is in violation of rule #201 & #203. Therefore you are hereby directed to plug and abandon, return well to production or temporarily abandon it under rule #203 within 30 days.

If you fail to bring the well into compliance, we will schedule a show cause hearing as to why the well should not be plugged and abandoned.

Sincerely,

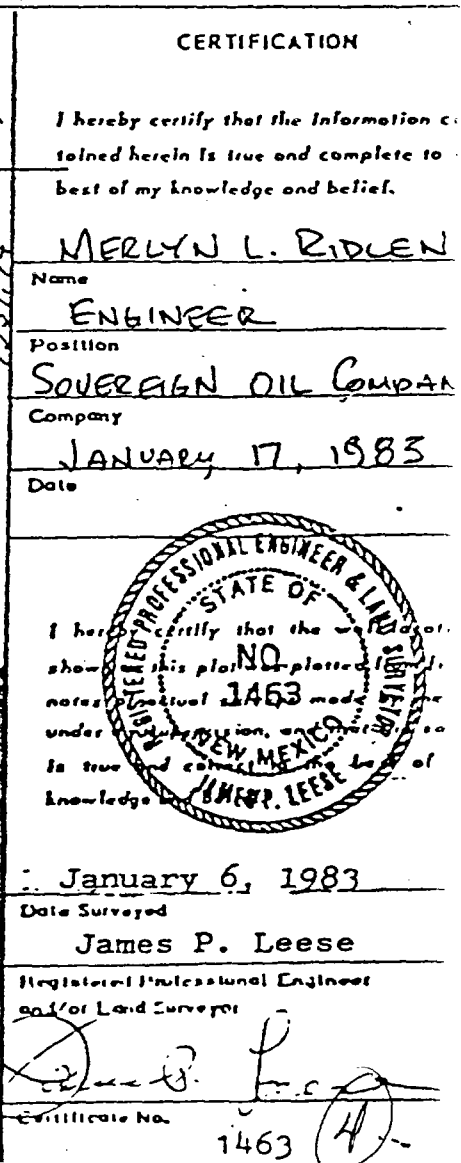
Johnny Robinson
Deputy Oil & Gas Inspector

JR/sh

cc: Rand Carroll
well file
Richmond Pet Inc

All distances must be from the outer boundaries of the section

No allowable will be assigned to the well until all interests have been consolidated (by communitization, unitization, forced-pooling, or otherwise) or until a non-standard unit, eliminating such interests, has been approved by the Division.





TONY ANAYA
GOVERNOR

STATE OF NEW MEXICO
ENERGY AND MINERALS DEPARTMENT
OIL CONSERVATION DIVISION
AZTEC DISTRICT OFFICE

1000 RIO BRAZOS ROAD
AZTEC, NEW MEXICO 87410
(505) 334-6178

January 24, 1983

Sovereign Oil Company
7490 Clubhouse Road, Suite 102
Boulder CO 80301

Re: Sovereign 32-6 #1, E-9-32N-6W

Dear Sirs:

The referenced well needs to have a new case docketed for the directional drilling, nonstandard location, and nonstandard proration unit (for the Pictured Cliffs), at the new location, therefore we are returning the Application for Permit to Drill for you to outline the directional drilling in the proposed casing and cement program.

The APD cannot be approved without a division order allowing the direction drilling at a specific location. The bond must show this exact location also.

If you have any questions please call this office.

Yours truly,

A handwritten signature in cursive script that reads "Jeff A. Edmister".

Jeff A. Edmister
Geologist II

JAE:gc

Enc.

cc: Operator file
Well file



STATE OF NEW MEXICO
ENERGY AND MINERALS DEPARTMENT
OIL CONSERVATION DIVISION

January 28, 1983

TONEY ANAYA
GOVERNOR

POST OFFICE BOX 2088
STATE LAND OFFICE BUILDING
SANTA FE, NEW MEXICO 87501
(505) 827-5800

Sovereign Oil Company
6395 Sunpark Drive
Penthouse
Boulder, Colorado 80301

Attention: Merle Ridlen

Administrative Order NSP-1329-A

Gentlemen:

Reference is made to your application for a 118.2-acre non-standard proration unit consisting of the following acreage in the Pictured Cliffs Pool:

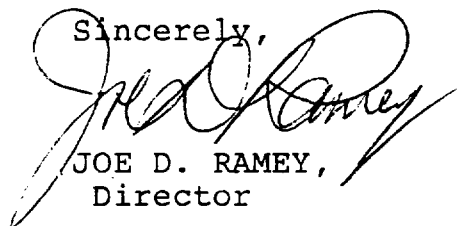
SAN JUAN COUNTY, NEW MEXICO
TOWNSHIP 32 NORTH, RANGE 6 WEST, NMPM
Section 9: NW/4

It is my understanding that this unit is to be dedicated to your 32-6 Well No. 1 to be located at a surface location of 900 feet from the West line and 1730 feet from the North line to the Pictured Cliffs at 900 feet from the West line and 1500 feet from the North line of said Section 9.

By authority granted me under the provisions of Rule 104 D II, the above non-standard proration unit is hereby approved.

That NSP-1329 is hereby superseded.

Sincerely,


JOE D. RAMEY,
Director

JDR/RLS/dr

cc: Oil Conservation Division - Aztec
Oil & Gas Engineering Committee - Hobbs
Minerals Management Service - Farmington

RECEIVED

FEB 7 - 1983

OIL CON. DIV.
DIST. 3

6

Memo

From

Luanne

To

Sovereign Oil Company
7490 Clubhouse Rd., Suite 102
Boulder Co 80301

Re: Form C-101, Sovereign 32-6 #1, E-9-32N-6W

Attached is a copy of your APD for the above well, with approval date included, which was not noted on your approved copy.

Oil Conservation

Aztec, New Mexico

ENERGY AND MINERALS DEPARTMENT
OIL CONSERVATION DIVISION

IN THE MATTER OF THE HEARING
CALLED BY THE OIL CONSERVATION
DIVISION FOR THE PURPOSE OF
CONSIDERING:

CASE NO. 7919
Order No. R-7242-A

APPLICATION OF SOVEREIGN OIL COMPANY
FOR AMENDMENT OF DIVISION ORDER
NO. R-7242, SAN JUAN COUNTY,
NEW MEXICO.

RECEIVED

AUG 8 - 1983

ORDER OF THE DIVISION

OIL CON. DIV.
DIST. 3

BY THE DIVISION:

This cause came on for hearing at 9 a.m. on July 20, 1983, at Santa Fe, New Mexico, before Examiner Richard L. Stamets.

NOW, on this 1st day of August, 1983, the Division Director, having considered the testimony, the record, and the recommendations of the Examiner, and being fully advised in the premises,

FINDS:

(1) That due public notice having been given as required by law, the Division has jurisdiction of this cause and the subject matter thereof.

(2) That the applicant, Sovereign Oil Company, seeks an amendment of Division Order No. R-7242 to show corrected unorthodox surface and bottomhole locations for their 32-6 Well No. 1 located in Section 9, Township 32 North, Range 6 West, as follows:

Surface location 1730 feet from the North line and 900 feet from the West line;

bottomhole location at the top of the Pictured Cliffs formation 1482 feet from the North line and 836 feet from the West line;

and a bottomhole location at the base of the Pictured Cliffs formation 1442 feet from the North line and 826 feet from the West line.

8

OIL CONSERVATION DIVISION

P. O. BOX 2088

SANTA FE, NEW MEXICO 87501

Form C-103
Revised 10-1-78

10. BY COPIES RECEIVED	
DISTRIBUTION	
SANTA FE	
FILE	
U.S.G.S.	
LAND OFFICE	
OPERATOR	

5a. Indicate Type of Lease	
State <input type="checkbox"/>	Fee <input checked="" type="checkbox"/>
5. State Oil & Gas Lease No.	

SUNDRY NOTICES AND REPORTS ON WELLS

(DO NOT USE THIS FORM FOR PROPOSALS TO DRILL OR TO DEEPEN OR PLUG BACK TO A DIFFERENT RESERVOIR. USE "APPLICATION FOR PERMIT" (FORM C-101) FOR SUCH PROPOSALS.)

OIL WELL ☐ GAS WELL ☒ OTHER-

7. Unit Agreement Name

8. Form or Lease Name
Sovereign
Navajo Lake 32-6

9. Well No.

1

10. Field and Pool, or Wildcat
Wildcat PC

UNIT LETTER E 1730 FEET FROM THE North LINE AND 900' FEET FROM
THE West LINE, SECTION 9 TOWNSHIP 32 N RANGE 6 W N.M.P.M.

15. Elevation (Show whether DF, RT, GR, etc.)

6157' GL 6169' KB

12. County
San Juan

Check Appropriate Box To Indicate Nature of Notice, Report or Other Data

NOTICE OF INTENTION TO:

SUBSEQUENT REPORT OF:

PERFORM REMEDIAL WORK <input type="checkbox"/>	PLUG AND ABANDON <input type="checkbox"/>	REMEDIAL WORK <input type="checkbox"/>	ALTERING CASING <input type="checkbox"/>
TEMPORARILY ABANDON <input type="checkbox"/>	CHANGE PLANS <input type="checkbox"/>	COMMENCE DRILLING OPNS. <input checked="" type="checkbox"/>	PLUG AND ABANDONMENT <input type="checkbox"/>
PULL OR ALTER CASING <input type="checkbox"/>	OTHER <input type="checkbox"/>	CASING TEST AND CEMENT JOB <input checked="" type="checkbox"/>	
		OTHER <input type="checkbox"/>	

17. Describe Proposed or Completed Operations (Clearly state all pertinent details, and give pertinent dates, including estimated date of starting any proposed work) SEE RULE 1103.

Spud 12 $\frac{1}{4}$ " hole at 7:30 P.M. 1/21/83. Drill to 264'. Set 6 jts.
8 5/8" 24#/ft k-55 casing at 260' KB. Drill 7 7/8" hole to 3182' KB
with fresh water gel mud system. Using Dyna-Drill to whipstock well
to bottom-hole location of 1500' FNL, 900' FWL \pm 50'. Run 1EL/CDL/CNL
logs. Run 75 jts. 4 $\frac{1}{2}$ " new 11.6#/ft J55 casing. Casing landed at 3180'
KB. Cemented with 302 sx. Howco lite cement and 150 sx class "B" cement
w/4% gel. Plug down at 1:30 A.M. 1/30/83.

RECEIVED
FEB 1 1983
OIL CON. DIV.
DIST. 3

8. I hereby certify that the information above is true and complete to the best of my knowledge and belief.

SIGNED Frank T. Chavez TITLE Operations Engineer DATE 2/6/83

Original Signed by FRANK T. CHAVEZ

SUPERVISOR DISTRICT # 3

APPROVED BY _____ TITLE _____ DATE _____

CONDITIONS OF APPROVAL, IF ANY:

(9)

OIL CONSERVATION DIVISION

P. O. BOX 2088

SANTA FE, NEW MEXICO 87501

Form C-103
Revised 10-1-78

NO. OF COPIES RECEIVED	
DISTRIBUTION	
SANTA FE	
FILE	
U.S.G.S.	
LAND OFFICE	
OPERATOR	

5a. Indicate Type of Lease State <input checked="" type="checkbox"/> Fee <input type="checkbox"/>
5. State Oil & Gas Lease No.

SUNDRY NOTICES AND REPORTS ON WELLS

(DO NOT USE THIS FORM FOR PROPOSALS TO DRILL OR TO DEEPEN OR PLUG BACK TO A DIFFERENT RESERVOIR.
USE "APPLICATION FOR PERMIT -" (FORM C-101) FOR SUCH PROPOSALS.)OIL WELL ☐ GAS WELL ☒ OTHER-

Name of Operator

Sovereign Oil Company

Address of Operator

7490 Clubhouse Rd. Suite 102 Boulder, Colo. 80301

Location of Well

UNIT LETTER E, 1730 FEET FROM THE North LINE AND 9 FEET FROMTHE West LINE, SECTION 9 TOWNSHIP 32N RANGE 6W N.M.P.M.

7. Unit Agreement Name

8. Farm or Lease Name
Sovereign 32-6
Navajo Lake

9. Well No.

No. 1

10. Field and Pool, or Wildcat

Ignacio Blanco WCAP

15. Elevation (Show whether DF, RT, GR, etc.)

6169' K.B. 6157' G.L.

12. County

San Juan

Check Appropriate Box To Indicate Nature of Notice, Report or Other Data

NOTICE OF INTENTION TO:

PERFORM REMEDIAL WORK ☐TEMPORARILY ABANDON ☐PULL OR ALTER CASING ☐OTHER ☐PLUG AND ABANDON ☐CHANGE PLANS ☐

SUBSEQUENT REPORT OF:

REMEDIAL WORK ☐COMMENCE DRILLING OPNS. ☐CASING TEST AND CEMENT JOB ☒OTHER ☐ALTERING CASING ☐PLUG AND ABANDONMENT ☐

7. Describe Proposed or Completed Operations (Clearly state all pertinent details, and give pertinent dates, including estimated date of starting any proposed work) SEE RULE 1103.

On January 23, 1983, 256' of new 8 5/8" 24#/ft casing was set and cemented with 250 sx. of Class "G" cement with 100% returns. After 12 hours the casing was pressure tested to 1500# for 15 minutes before drilling out.

RECEIVED
OIL CON. DIV.
DIST. 3

8. I hereby certify that the information above is true and complete to the best of my knowledge and belief.

SIGNED Raymond M. LongTITLE Operations EngineerDATE 4/19/83

Original Signed by FRANK T. CHAVEZ

SUPERVISOR DISTRICT # 3

AUG 17 1983

APPROVED BY _____

TITLE _____

DATE _____

OTHER APPROVAL IF ANY:

STATE OF NEW MEXICO
ENERGY AND MINERALS DEPARTMENT

OIL CONSERVATION DIVISION
P. O. BOX 2088
SANTA FE, NEW MEXICO 87501

30-043-25190
Form C-101
Revised 10-1-78

NO. OF COPIES RECEIVED	
DISTRIBUTION	
SANTA FE	
FILE	
U.S.G.S.	
LAND OFFICE	
OPERATOR	

5A. Indicate Type of Lease	
STATE <input type="checkbox"/>	FEE <input checked="" type="checkbox"/>
5. State Oil & Gas Lease No.	

APPLICATION FOR PERMIT TO DRILL, DEEPEN, OR PLUG BACK

1a. Type of Work DRILL <input checked="" type="checkbox"/> DEEPEN <input type="checkbox"/> PLUG BACK <input type="checkbox"/>		7. Unit Agreement Name
b. Type of Well OIL WELL <input type="checkbox"/> GAS WELL <input checked="" type="checkbox"/> OTHER <input type="checkbox"/> SINGLE ZONE <input checked="" type="checkbox"/> MULTIPLE ZONE <input type="checkbox"/>		8. Farm or Lease Name Sovereign 32-6
2. Name of Operator Sovereign Oil Company 303 530-0608		9. Well No. No. 1
3. Address of Operator 7490 Clubhouse Road, Ste 102, Boulder, Colorado 80301		10. Field and Pool, or Wildcat W/C PC
4. Location of Well UNIT LETTER <u>E</u> LOCATED <u>1730</u> FEET FROM THE <u>North</u> LINE AND <u>900</u> FEET FROM THE <u>West</u> LINE OF SEC. <u>9</u> TWP. <u>32N</u> RGE. <u>6W</u> NMPM		12. County San Juan
19. Proposed Depth 3185 KB		19A. Formation Lewis
20. Rotary or C.T. Rotary		
21. Elevations (Show whether DF, RT, etc.) 6157 G.L.	21A. Kind & Status Plug. Bond One time	21B. Drilling Contractor Four Corners
22. Approx. Date Work will start on approval		

PROPOSED CASING AND CEMENT PROGRAM

SIZE OF HOLE	SIZE OF CASING	WEIGHT PER FOOT	SETTING DEPTH	SACKS OF CEMENT	EST. TOP
13 3/4	9 5/8	36#	200'	200-3% CaCl	Surface
7 7/8	4 1/2	10.5#	3185'	325 sx	Cover Ojo Alamo

Drill 13 3/4" hole with spud mud. Set 9 5/8" surface casing and cement to surface. WOC 12 hours. Nipple up BOP's and bleed off manifold and test to 600 psi for 30 min. Drill 7 7/8" hole to 1300'. Begin deviation with Dynadrill maintaining 8° to 11° deviation to proposed TD. Actual depth approximately 3155' KB. Location at TD: 900' FWL, 1500' FNL Section 9, T32N R6W. Run & cement 4 1/2" casing to 1100' depth.

Expected tops: Ojo Alamo-1410'; Kirtland-1530'; Fruitland-2570'; Pictured Cliffs 2740'; Lewis Shale-3140'.

RECEIVED
FEB - 1983

IN ABOVE SPACE DESCRIBE PROPOSED PROGRAM: IF PROPOSAL IS TO DEEPEN OR PLUG BACK, GIVE DATA ON PRESENT PRODUCTIVE ZONE AND PROPOSED NEW PRODUCTIVE ZONE. GIVE BLOWOUT PREVENTER PROGRAM, IF ANY.

I hereby certify that the information above is true and complete to the best of my knowledge and belief.

Signed Mark Kellan Title Engineer Date 2/1/83

(This space for State Use)

SUPERVISOR DISTRICT 1

AUG 17 1983

APPROVED BY Frank J. Dany TITLE _____ DATE _____

REASONS OF APPROVAL, IF ANY: NSP - 1829 A for 18.20
NSP - 7242 for 237.60

11

All distances must be from the outer boundaries of the Section.

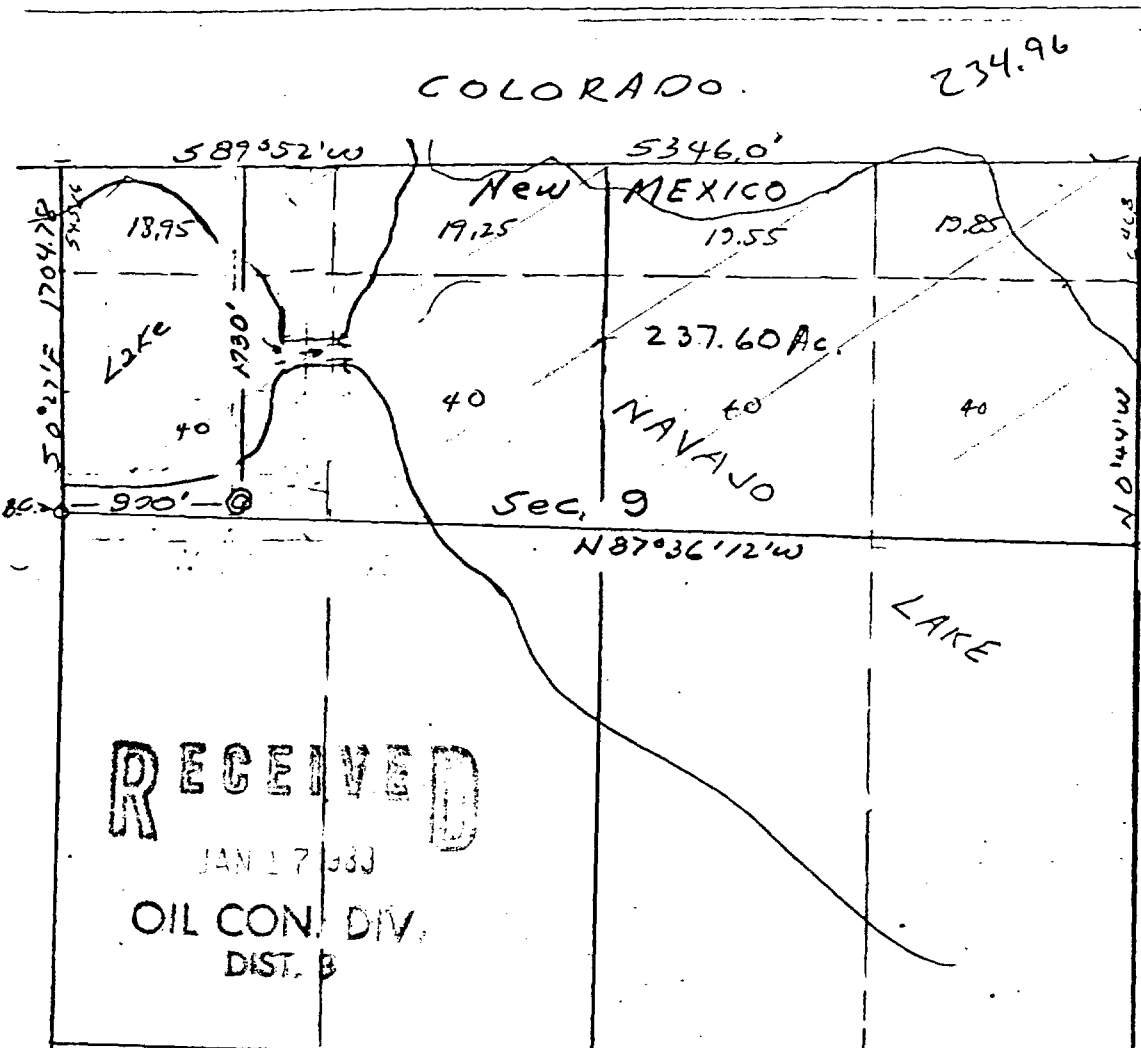
Operator SOVEREIGN OIL CO.			Lease SOVEREIGN 32-6		Well No. NO. 1
Unit Letter E	Section 9	Township 32 NORTH	Range 6 WEST	County SAN JUAN COUNTY	
Actual Postage Location of Well:					
1730 feet from the NORTH line and		900 feet from the WEST line			
Ground Level Elev. 6257	Producing Formation PICTURED CLIFFS	Pool Wildcat	Dedicated Acres 118.20		

1. Outline the acreage dedicated to the subject well by colored pencil or hatchure marks on the plat below.
2. If more than one lease is dedicated to the well, outline each and identify the ownership thereof (both as to working interest and royalty).
3. If more than one lease of different ownership is dedicated to the well, have the interests of all owners been consolidated by communitization, unitization, force-pooling, etc?

☒ Yes ☒ No If answer is "yes," type of consolidation **UNITIZATION**

If answer is "no," list the owners and tract descriptions which have actually been consolidated. (Use reverse side of this form if necessary.)

No allowable will be assigned to the well until all interests have been consolidated (by communitization, unitization, forced-pooling, or otherwise) or until a non-standard unit, eliminating such interests, has been approved by the Division.



CERTIFICATION

I hereby certify that the information contained herein is true and complete to the best of my knowledge and belief.

MERLYN L. RIDLEN

Name

ENGINEER

Position

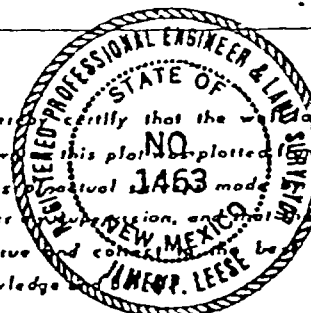
SOVEREIGN OIL COMPANY

Company

JANUARY 17, 1983

Date

I hereby certify that the information shown on this plat is plotted from notes of actual 1463 made under supervision, and that the same is true and correct to the best of my knowledge.



January 6, 1983

Date Surveyed

James P. Leese

Registered Professional Engineer and/or Land Surveyor

Certificate No.

1463

17

STATE OF NEW MEXICO
ENERGY AND MINERALS DEPARTMENT
OIL CONSERVATION DIVISION

Sovereign 32-6 #1

IN THE MATTER OF THE HEARING
CALLED BY THE OIL CONSERVATION
DIVISION FOR THE PURPOSE OF
CONSIDERING:

CASE NO. 7816
Order No. R-7242

APPLICATION OF SOVEREIGN OIL CO.
FOR DIRECTIONAL DRILLING, UNORTHODOX
LOCATION, COMPULSORY POOLING, AND A
NON-STANDARD PRORATION UNIT, SAN JUAN
COUNTY, NEW MEXICO.

RECEIVED
APR 4 1983
OIL CON. DIV.
DIST. 3

ORDER OF THE DIVISION

BY THE DIVISION:

This cause came on for hearing at 9 a.m. on March 16, 1983, at Santa Fe, New Mexico, before Examiner Richard L. Stamets.

NOW, on this 29th day of March, 1983, the Division Director, having considered the testimony, the record, and the recommendations of the Examiner, and being fully advised in the premises,

FINDS:

(1) That due public notice having been given as required by law, the Division has jurisdiction of this cause and the subject matter thereof.

(2) That the applicant, Sovereign Oil Co., seeks authority to directionally drill its proposed 32-6 Well No. 1 from a surface location 1730 feet from the North line and 900 feet from the West line of Section 9, Township 32 North, Range 6 West, San Juan County, New Mexico, by kicking off from the vertical at a depth of 1500 feet and drilling in a northerly direction in such a manner as to penetrate the Pictured Cliffs formation at an unorthodox location within 50 feet of a point 1500 feet from the North line and 900 feet from the West line and to penetrate the Mesaverde formation at an unorthodox location no nearer than 1100 feet from the North line and no nearer than 700 feet from the West line, all in said Section 9, dedicating the N/2 of said Section 9 to the well.

(3) That the applicant further seeks an order pooling all mineral interests in the Mesaverde and Pictured Cliffs formations underlying a 237.6-acre non-standard proration unit

points not more than 100 feet apart; that the operator shall cause the surveying company to forward a copy of the survey report directly to the Santa Fe office of the Division, P. O. Box 2088, Santa Fe, New Mexico, and that the operator shall notify the Division's Aztec District Office of the date and time said survey is to be commenced.

(3) That Form C-105 shall be filed in accordance with Division Rule 1105 and the operator shall indicate thereon true vertical depth in addition to measured depths, and the bottom hole location of the well.

(4) That those portions of the subject application seeking compulsory pooling in the Pictured Cliffs and Mesaverde formations and for directional drilling to the Mesaverde formation are hereby dismissed.

(5) That jurisdiction of this cause, is retained for the entry of such further orders as the Division may deem necessary.

DONE at Santa Fe, New Mexico, on the day and year hereinabove designated.

STATE OF NEW MEXICO
OIL CONSERVATION DIVISION


JOE D. RAMEY,
Director

S E A L



**Sovereign Oil
Company**

MCMLXXX

RECEIVED

APR 13 1983
OIL & GAS DIV.
C.B. 3

April 14, 1983

New Mexico Oil & Gas Commission
Mr. Frank Chavez
1000 Rio Brazos Rd.
Aztec, New Mexico 87401

Subject: Directional Drilling
Report

Dear Mr. Chavez:

Enclosed please find the Eastman Whipstock directional drilling report you mentioned was mission from our files on the Sovereign Navajo Lake No. 9-1 well.

I am preparing the corporate papers to qualify Sovereign in the State of New Mexico.

Also, I'll send the casing pressure data in a day or so.

Yours sincerely,

M. R. McCoy
President

MRM:kaa

Enclosure

All distances must be from the outer boundaries of the Section.

Operator Sovereign Oil Company			Lease Sovereign 32-6			Well No. 1		
Unit Letter E	Section 9	Township 32N	Range 6W	County San Juan				
Actual Footage Location of Well: 1730 feet from the North line and 900 feet from the West line								
Ground Level Elev. 6157 GR	Producing Formation Pictured Cliffs		Pool Wildcat-Pictured Cliffs		Dedicated Acreage: 237.60 Acres			

1. Outline the acreage dedicated to the subject well by colored pencil or hachure marks on the plat below.
2. If more than one lease is dedicated to the well, outline each and identify the ownership thereof (both as to working interest and royalty).
3. If more than one lease of different ownership is dedicated to the well, have the interests of all owners been consolidated by communitization, unitization, force-pooling, etc?

☐ Yes ☐ No If answer is "yes," type of consolidation _____

If answer is "no," list the owners and tract descriptions which have actually been consolidated. (Use reverse side of this form if necessary.) _____

No allowable will be assigned to the well until all interests have been consolidated (by communitization, unitization, forced-pooling, or otherwise) or until a non-standard unit, eliminating such interests, has been approved by the Division.

Order R-7242 (N $\frac{1}{2}$)			
RECEIVED AUG 31 1983 OIL CON. DIV. DIST. 3			

CERTIFICATION

I hereby certify that the information contained herein is true and complete to the best of my knowledge and belief.

Name
AR Kendrick
Position
Agent
Company
Sovereign Oil Company
Date
August 31, 1983

I hereby certify that the well location shown on this plat was plotted from field notes of actual surveys made by me or under my supervision, and that the same is true and correct to the best of my knowledge and belief.

Date Surveyed

Registered Professional Engineer
and/or Land Surveyor

Certificate No.



STATE OF NEW MEXICO
ENERGY AND MINERALS DEPARTMENT
OIL CONSERVATION DIVISION

August 17, 1983

TONEY ANAYA
GOVERNOR

POST OFFICE BOX 2088
STATE LAND OFFICE BUILDING
SANTA FE, NEW MEXICO 87501
(505) 827-5800

Allied Fidelity Insurance Co.
7000 E. Belleview
Suite 200
Englewood, Colorado 80111

Re: \$7,500 One-Well Plugging Bond
Sovereign Oil Company, Principal
Allied Fidelity Insurance Co.,
Surety; N/2 of Sec. 9, T-32-N,
R-6-W, San Juan County
Bond No. FS-104597

Gentlemen:

The Oil Conservation Division hereby approves
the above-captioned plugging bond effective August 16,
1983.

We would appreciate receiving a rider to this
bond as soon as possible giving the exact footage
location; example: 660 feet from the North line and 660
feet from the West line.

Thank you.

Sincerely,

JOE D. RAMEY,
Director

dr/

cc: Oil Conservation Division
Aztec, New Mexico

Sovereign Oil Company
7490 Clubhouse Road
Boulder, Colorado 80301

(17)

OIL CONSERVATION DIVISION

IN THE MATTER OF THE HEARING
CALLED BY THE OIL CONSERVATION
DIVISION FOR THE PURPOSE OF
CONSIDERING:

Wet
hole
RECEIVED

AUG 25 1983

OIL CON. DIV.

DIST. 3 CASE NO. 7893
Order No. R-7336

IN THE MATTER OF THE HEARING CALLED BY THE OIL CONSERVATION
DIVISION ON ITS OWN MOTION TO PERMIT SOVEREIGN OIL COMPANY,
ALLIED FIDELITY INSURANCE COMPANY, AND ALL OTHER INTERESTED
PARTIES TO APPEAR AND SHOW CAUSE WHY THE SOVEREIGN 32-6 WELL NO.
1 LOCATED IN UNIT E OF SECTION 9, TOWNSHIP 32 NORTH, RANGE 6
WEST, SAN JUAN COUNTY, SHOULD NOT BE PLUGGED AND ABANDONED IN
ACCORDANCE WITH A DIVISION-APPROVED PLUGGING PROGRAM.

ORDER OF THE DIVISION

BY THE DIVISION:

This cause came on for hearing at 9 a.m. on August 17,
1983, at Santa Fe, New Mexico, before Examiner Richard L.
Stamets.

NOW, on this 23rd day of August, 1983, the Division
Director, having considered the record and the recommendations
of the Examiner, and being fully advised in the premises,

FINDS:

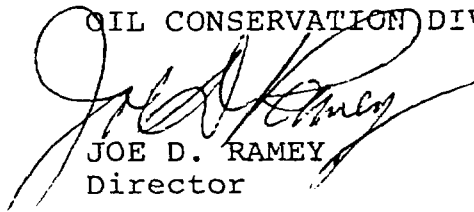
That all deficiencies related to the subject well having
been corrected, Case No. 7893 should be dismissed.

IT IS THEREFORE ORDERED:

That Case No. 7893 is hereby dismissed.

DONE at Santa Fe, New Mexico, on the day and year
hereinabove designated.

STATE OF NEW MEXICO
OIL CONSERVATION DIVISION


JOE D. RAMEY
Director

S E A L

(18)



STATE OF NEW MEXICO
ENERGY AND MINERALS DEPARTMENT
OIL CONSERVATION DIVISION

TONY ANAYA
GOVERNOR

August 29, 1983

Sovereign 326 #1

RECEIVED

AUG 31 1983

OIL CON. DIV.
DIST. 3

POST OFFICE BOX 2088
STATE LAND OFFICE BUILDING
SANTA FE, NEW MEXICO 87501
(505) 827-5800

Allied Fidelity Insurance Co.
P. O. Box 3549
Littleton, Colorado 80161

Re: \$7,500 One-Well Plugging Bond
Sovereign Oil Company, Principal
N/2 of Sec. 9, T-32-N,
R-6-W, San Juan County
Bond No. FS-104597

Gentlemen:

The Oil Conservation Division hereby
acknowledges receipt of and approves the rider
to the above-captioned bond with the exact
footage location as follows:

800 feet from the West line
and 1730 feet from the North line
of Section 9.

Sincerely,

JOE D. RAMEY,
Director

dr/

cc: Oil Conservation Division
Aztec, New Mexico

Sovereign Oil Company
7490 Clubhouse Road
Boulder, Colorado 80301

(19)



Sovereign Oil Company

MCMLXXX

May 10, 1984

Oil Conservation Division
1000 Rio Brazos Road
Aztec, New Mexico 87415

To Whom It May Concern:

Pursuant to our telephone conversation of May 10, 1984, I will be forwarding the C-103 Form, along with the Notorized copy of the Directional Survey. Please find the enclosed C-105 Forms and the C-122 Form.

Thank you for your co-operation in this matter. Please do not hesitate to call if you need additional information.

Sincerely yours,

Valerie Grinols
Secretary to Mel McCoy

/vg

RECEIVED
MAY 14 1984
OIL CON. DIV.
DIST. 3

(20)

NO. OF COPIES RECEIVED	
DISTRIBUTION	
SANTA FE	
FILE	
U.S.G.S.	
LAND OFFICE	
OPERATOR	

NEW MEXICO OIL CONSERVATION COMMISSION
WELL COMPLETION OR RECOMPLETION REPORT AND LOG

Form C-105
Revised 1-1-65

5a. Indicate Type of Lease
State ☐ Fee ☒
5. State Oil & Gas Lease No.

14. TYPE OF WELL
OIL WELL ☐ GAS WELL ☒ DRY ☐ OTHER ☐

15. TYPE OF COMPLETION
NEW WELL ☒ WORK OVER ☐ DEEPEN ☐ PLUG BACK ☐ DIFF. RESVR. ☐ OTHER ☐

2. Name of Operator
SOVEREIGN OIL COMPANY

3. Address of Operator
7490 Clubhouse Rd., Suite 102, Boulder, CO 80301

4. Location of Well
UNIT LETTER E LOCATED 1730 FEET FROM THE N LINE AND 800 FEET FROM THE W LINE OF SEC. 9 TWP. 32N RGE. 6 W. 10E

15. Date Spudded 1/21/83 16. Date T.D. Reached 1/29/83 17. Date Compl. (Ready to Prod.) 4/14/84 18. Elevations (DF, RKB, RT, GR, etc.) 6157 Gr; 6169' KB 19. Elev. Casinghead 6159'

20. Total Depth 3181' 21. Plug Back T.D. 3115' 22. If Multiple Compl., How Many 23. Intervals Drilled By Rotary Tools All Cable Tools 0

24. Producing Interval(s), of this completion - Top, Bottom, Name
Pictured Cliffs - 2826' to 3020'

25. Was Directional Survey Made yes

26. Type Electric and Other Logs Run Gearhart IES \$ GR/D/N Blue Jet CBL 27. Was Well Cored no

28. CASING RECORD (Report all strings set in well)

CASING SIZE	WEIGHT LB./FT.	DEPTH SET	HOLE SIZE	CEMENTING RECORD	AMOUNT PULLED
8 5/8"	24 New	256	12 1/4	250 sax 4% CaCl ₂ 288' lift	0
4 1/2"	11.6 New	3180	7 7/8	302 sax HOWCO lite 55' lift cmt and 150 sax 177' lift class B cement	0

29. LINER RECORD

SIZE	TOP	BOTTOM	SACKS CEMENT	SCREEN
None				

30. TUBING RECORD

SIZE	DEPTH SET	PACKER SET
2 3/8	2860'	None

31. Perforation Record (Interval, size and number)
Pictured cliffs with 17 (0.34") jets by Blue Jet at 2826'-30'-32'-46'-50'-54'-61'; 2916'-18'-48'-52' 56'-82'-88'-96'; 3000'-20'

32. ACID, SHOT, FRACTURE, CEMENT SQUEEZE, ETC.

DEPTH INTERVAL	AMOUNT AND KIND MATERIAL USED
2826' - 3020'	250 gal 15% HCl. & Foam
Frac w/70	quality foam; 80,000
#20/40 sd. by	HOWCO

33. PRODUCTION

Date First Production await pipeline connection Production Method (Flowing, gas lift, pumping - Size and type pump) Flow Well Status (Prod. or Shut-in) shut-in

Date of Test	Hours Tested	Choke Size	Prod'n. For Test Period	Oil - Bbl.	Gas - MCF	Water - Bbl.	Gas - Oil Ratio
4-14-84	3	0.75 C.N.		0	111	Est. 15	

Flow Tubing Press.	Casing Pressure	Calculated 24-Hour Rate	Oil - Bbl.	Gas - MCF	Water - Bbl.	Oil Gravity - API (Corr.)
61 psig	454 psig		0	891	Est. 100	

34. Disposition of Gas (Sold, used for fuel, vented, etc.) Vent on test - To be sold to Northwest Pipeline Test Witnessed By

35. List of Attachments
3 hr Flow test Form C-122

36. I hereby certify that the information shown on both sides of this form is true and complete to the best of my knowledge and belief.

SIGNED M. R. M. Coy TITLE Chief Geologist DATE 5/04/84

MULTIPOINT AND ONE POINT BACK PRESSURE TEST FOR GAS WELL

Type Test <input checked="" type="checkbox"/> Initial <input type="checkbox"/> Annual <input type="checkbox"/> Special				Test Date 4-14-84																															
Company SOVEREIGN OIL COMPANY				Connection																															
Pool Undesignated				Formation Pictured Cliffs																															
Completion Date 4-4-84		Total Depth 3181		Plug Back TD																															
Elevation TbgHd:6159		Farm or Lease Name Navajo Lake 32-6																																	
Csq. Size 4 1/2	Wt. 10.5	d	Set At 3180	Perforations: From 2826 To 3020																															
Tbg. Size 2 3/8"	Wt. 4.7	d	Set At 2860'	Perforations: From Open end To																															
Type Well - Single - Bradenhead - G.G. or G.O. Multiple Single				Packer Set At None																															
Producing Thru Tubing		Reservoir Temp. °F #		Baro. Press. - P _g																															
L		H	G _g	% CO ₂	% N ₂																														
				% H ₂ S	Prover																														
					Meter Run																														
					Taps																														
FLOW DATA TUBING DATA CASING DATA Duration of Flow																																			
NO.	Prover Line Size	X	Orifice Size	Press. p.s.i.g.	Diff. h _w																														
SI	231 hrs																																		
1.	0.75 C.N.																																		
2.	0.75 C.N.																																		
3.	0.75 C.N.																																		
4.																																			
5.																																			
RATE OF FLOW CALCULATIONS																																			
NO.	Coefficient (24 Hour)	$\sqrt{h_w P_m}$	Pressure P _m	Flow Temp. Factor Ft.	Gravity Factor F _g																														
1	12.365		108	74° - .9868	Est. 1.0																														
2	12.365		92	74° - .9868	Est. 1.0																														
3	12.365		73	74° - .9868	Est. 1.0																														
4.																																			
5.																																			
NO.	P _t	Temp. °R	T _t	Z	Gas Liquid Hydrocarbon Ratio _____ Mcf/bbl.																														
1.					A.P.I. Gravity of Liquid Hydrocarbons _____ Deg.																														
2.					Specific Gravity Separator Gas _____ X X X X X X X X																														
3.					Specific Gravity Flowing Fluid _____ X X X X X																														
4.					Critical Pressure _____ P.S.I.A. _____ P.S.I.A.																														
5.					Critical Temperature _____ R _____ R																														
$P_c = 1503$ $P_c^2 = 2259009$ <table border="1" style="width:100%; border-collapse: collapse;"> <tr> <td>NO.</td> <td>P_t^2</td> <td>P_w</td> <td>P_w^2</td> <td>$P_c^2 - P_w^2$</td> </tr> <tr><td>1</td><td></td><td></td><td></td><td></td></tr> <tr><td>2</td><td></td><td></td><td></td><td></td></tr> <tr><td>3</td><td></td><td></td><td></td><td></td></tr> <tr><td>4</td><td></td><td></td><td></td><td></td></tr> <tr><td>5</td><td></td><td></td><td></td><td></td></tr> </table> <div style="display: flex; justify-content: space-around; margin-top: 10px;"> <div> $(1) \frac{P_c^2}{P_c^2 - P_w^2} = \frac{2259009}{2253680}$ $AOF = Q \left[\frac{P_c^2}{P_c^2 - P_w^2} \right]^n = 891 \times 1.002$ </div> <div> $(2) \left[\frac{P_c^2}{P_c^2 - P_w^2} \right]^n = \frac{(1.002)^{.85}}{1.002}$ </div> </div>						NO.	P_t^2	P_w	P_w^2	$P_c^2 - P_w^2$	1					2					3					4					5				
NO.	P_t^2	P_w	P_w^2	$P_c^2 - P_w^2$																															
1																																			
2																																			
3																																			
4																																			
5																																			
Absolute Open Flow 893 Mcfd @ 15.025				Angle of Slope @ Slope, n 0.85																															
Remarks: Water vapor in 2 min. started heavy water vapor in 33 min. and continued throughout test. Est 4-5 BWPH																																			
Approved By Division		Conducted By: John Heller		Calculated By: John Heller																															
				Checked By:																															

(22)

Sovereign Oil Company
Sovereign 32-6 #1
1730' FNL 900' FWL
Sec. 9, T32N, R6W

Based on the data from the Eastman Whipstock report:

1. The Measured Depth at the True Vertical Depth of 2752 feet is interpolated to be 2775 feet as follows:

$$\begin{array}{rcl} 2752.00 - 2713.67 = 38.33 & \frac{38.33}{61.15} & = .6268 \\ 2774.82 - 2713.67 = 61.15 & & \end{array}$$

$$2798 - 2736 = 62 \quad 62 \times .6268 = 38.86 \quad 2736 + 38.86 = 2774.86 \text{ or } \underline{\underline{2775' \text{ MD}}}$$

2. The bottomhole location at 2752' TVD is calculated as follows:

$$\begin{array}{rcl} 2775 - 2736 = 36 & \frac{36}{62} & = .629 \\ 2798 - 2736 = 62 & & \end{array}$$

$$250.82 - 241.04 = 9.78 \quad 9.78 \times .629 = 6.15 \quad 1730 - 241.04 - 6.15 = \underline{\underline{1482.81' \text{ FNL}}}$$

$$64.63 - 61.64 = 2.99 \quad 2.99 \times .629 = 1.88 \quad 900 - 61.64 - 1.88 = \underline{\underline{836.48' \text{ FWL}}}$$

3. The Measured Depth at the True Vertical Depth of 3020 feet is interpolated to be 3046 feet as follows:

$$\begin{array}{rcl} 3020.00 - 2897.18 = 122.84 & \frac{122.84}{123.51} & = .9944 \\ 3020.69 - 2897.18 = 123.51 & & \end{array}$$

$$3047 - 2922 = 125 \quad 125 \times .9944 = 124.3 \quad 2922 + 124.3 = 3046.3 \text{ or } \underline{\underline{3046' \text{ MD}}}$$

4. The bottomhole location at 3020' TVD is calculated as follows:

$$\begin{array}{rcl} 3046 - 2922 = 124 & \frac{124}{125} & = .992 \\ 3047 - 2922 = 125 & & \end{array}$$

$$288.64 - 270.11 = 18.53 \quad 18.53 \times .992 = 18.38 \quad 1730 - 270.11 - 18.38 = \underline{\underline{1441.51' \text{ FNL}}}$$

$$75.48 - 70.16 = 5.32 \quad 5.32 \times .992 = 5.28 \quad 900 - 70.16 - 5.28 = \underline{\underline{824.56' \text{ FWL}}}$$

BEFORE EXAMINER STAMETS OIL CONSERVATION DIVISION Sovereign EXHIBIT NO. <u>3</u> CASE NO. <u>7919</u> Submitted by <u>Kendrick</u> Hearing Date <u>7/20/83</u>

23



STATE OF NEW MEXICO
ENERGY AND MINERALS DEPARTMENT
OIL CONSERVATION DIVISION
AZTEC DISTRICT OFFICE

TONEY ANAYA
GOVERNOR

1000 RIO BRAZOS ROAD
AZTEC, NEW MEXICO 87410
(505) 334-6178

July 12, 1985

Sovereign Oil Co.
3300 Mitchell Lane, Suite 175
Boulder, Colorado 90301

Re: Sovereign 32-6 #1, 9-32N-6W

Dear Sir:

I have received notice of gas connect and first delivery on the above well. You have not submitted form C-104, which is to be completed in sections I through VI, for a new well. This is the authorization to transport and to receive an allowable. Without this approval the well is to stay shut in. This form should be sent to this office immediately to avoid such action.

If it is your intent to change the name of this well to the Navajo Lake 32-6, then please show this name change in the box marked other, in section I of the C-104. If not, all reporting should show the lease name Sovereign 32-6.

If you have any questions, please call.

Sincerely,

Luanne Hisel
Tech I

cc: Well File
Northwest Pipeline

24

Memo

August 1, 1985

From

Luanne Hisel

To Sovereign Oil Company
Mr. Malcolm McCoy

Re: C-104, Sovereign 32-6 #1

Dear Mr. McCoy:

The back portion of the C-104 must be filled out by you, even though the information was previously filed on the completion report. This form is sent to the transporter and this is information that they must have.

Also, I must again ask about the name of the well. According to our records, the name of the well was permitted under is the Sovereign 32-6 #1. If you intend to change the name then you must indicate so in the box marked other, Section I.

If you have any questions, please call.

Sincerely,

Luanne

Oil Conservation

Aztec, New Mexico

Malcolm E. McCoy
(Signature)

Vice President

(Title)

July 26, 1985

(Date)

Form C-104
Revised 10-01-78
Format 06-01-83
Page 1

ION

NATURAL GAS

80301

(see explain)

RECEIVED
AUG 1 - 1985
OIL CON. DIV.
DIST. 3

Kind of Lease

State, Federal or Fee Fee

Lease No.

Feet From The West

M, San Juan

County

(to which approved copy of this form is to be sent)

(to which approved copy of this form is to be sent)

Salt Lake City, Utah 84108-0900

dated?

When

June 20, 1985

er number:

CONSERVATION DIVISION

, 19

TITLE

This form is to be filed in compliance with RULE 1104.

If this is a request for allowable for a newly drilled or deepened well, this form must be accompanied by a tabulation of the deviated tests taken on the well in accordance with RULE 111.

All sections of this form must be filled out completely for allowable on new and recompleted wells.

Fill out only Sections I, II, III, and VI for changes of owner, well name or number, or transporter, or other such change of condition.

Separate Forms C-104 must be filed for each pool in multiple completed wells.

(25)

STATE OF NEW MEXICO
ENERGY AND MINERALS DEPARTMENT

CO. OF COPIES RECEIVED	
DISTRIBUTION	
SANTA FE	
FILE	
U.S.G.S.	
LAND OFFICE	
TRANSPORTER	
OIL	
GAS	
OPERATOR	
PRODUCTION OFFICE	

OIL CONSERVATION DIVISION
P. O. BOX 2088
SANTA FE, NEW MEXICO 87501

Form C-104
Revised 10-01-78
Format 06-01-83
Page 1

REQUEST FOR ALLOWABLE
AND
AUTHORIZATION TO TRANSPORT OIL AND NATURAL GAS

RECEIVED
AUG 1 - 1985
OIL CON. DIV.
DIST. 3

Operator Sovereign Oil Company	
Address 3300 Mitchell Lane, Suite 175, Boulder, Colorado 80301	
Reason(s) for filing (Check proper box)	Other (Please explain)
<input type="checkbox"/> New Well	NAME CHANGE: Navajo Lake 32-6
<input type="checkbox"/> Recompletion	
<input type="checkbox"/> Change in Ownership	
Change in Transporter of:	
<input type="checkbox"/> Oil	<input type="checkbox"/> Dry Gas
<input type="checkbox"/> Casinghead Gas	<input type="checkbox"/> Condensate

Change of ownership give name and address of previous owner: Sovereign 32-6 #1

II. DESCRIPTION OF WELL AND LEASE

Lessee Name Navajo Lake 32-6	Well No. 1	Pool Name, including Formation Undesignated, Pictured Cliffs	Kind of Lease State, Federal or Fee Fee	Lease No.
Location				
Unit Letter <u>1</u> ; <u>1,730</u> Feet From The <u>North</u> Line and <u>900</u> Feet From The <u>West</u>				
Line of Section <u>9</u> , SWNW Township <u>32</u> North Range <u>6</u> West, NMPM, San Juan County				

III. DESIGNATION OF TRANSPORTER OF OIL AND NATURAL GAS

Name of Authorized Transporter of Oil <input type="checkbox"/> or Condensate <input type="checkbox"/>	Address (Give address to which approved copy of this form is to be sent)	
Name of Authorized Transporter of Casinghead Gas <input type="checkbox"/> or Dry Gas <input checked="" type="checkbox"/>	Address (Give address to which approved copy of this form is to be sent)	
Northwest Pipeline Corporation	PO Box 8900, Salt Lake City, Utah 84108-0900	
If well produces oil or liquids, give location of tanks.	Unl. Sec. Twp. Rge.	Is gas actually connected? When
		Yes June 20, 1985

If this production is commingled with that from any other lease or pool, give commingling order number: _____

NOTE: Complete Parts IV and V on reverse side if necessary.

VI. CERTIFICATE OF COMPLIANCE

I hereby certify that the rules and regulations of the Oil Conservation Division have been complied with and that the information given is true and complete to the best of my knowledge and belief.

Malcolm E. A. McCoy
(Signature)
Vice President
July 26, 1985
(Date)

OIL CONSERVATION DIVISION
APPROVED AUG - 1 1985
Original Signed by FRANK T. CHAVEZ
BY _____
TITLE _____ SUPERVISOR DISTRICT # 3

This form is to be filed in compliance with RULE 1104.
If this is a request for allowable for a newly drilled or deepened well, this form must be accompanied by a tabulation of the deviation tests taken on the well in accordance with RULE 111.
All sections of this form must be filled out completely for allowable on new and recompleted wells.
Fill out only Sections I, II, III, and VI for changes of owner, well name or number, or transporter, or other such change of condition.
Separate Forms C-104 must be filed for each pool in multiply completed wells.

He

UNICHEM INTERNATIONAL

707 NORTH LEECH

P.O.BOX 1499

HOBBS, NEW MEXICO 88240

RECEIVED
AUG 03 1987
OIL CON. DIV
DIST. 3

COMPANY : SOVERIGN OIL CO.

DATE : 02-25-87

FIELD, LEASE & WELL : NAVAJO LAKE #1

SAMPLING POINT: WELLHEAD

DATE SAMPLED : 02-17-87

SPECIFIC GRAVITY = 1.003

TOTAL DISSOLVED SOLIDS = 6260

PH = 7.79

		ME/L	MG/L
CATIONS			
CALCIUM	(CA)+2	1.6	33.5
MAGNESIUM	(MG)+2	.11	1.3
SODIUM	(NA), CALC.	101.	2340.

		ME/L	MG/L
ANIONS			
BICARBONATE	(HCO3)-1	7.6	463.
CARBONATE	(CO3)-2	0	0
HYDROXIDE	(OH)-1	0	0
SULFATE	(SO4)-2	0	0
CHLORIDES	(CL)-1	96	3400

DISSOLVED GASES		
CARBON DIOXIDE	(CO2)	NOT RUN
HYDROGEN SULFIDE	(H2S)	NOT RUN
OXYGEN	(O2)	NOT RUN

IRON(TOTAL)	(FE)		.38
BARIUM	(BA)+2	.3	20.8
MANGANESE	(MN)	NOT RUN	

IONIC STRENGTH (MOLAL) = .106

SCALING INDEX	TEMP	
	30C	48.8C
	86F	120F
CARBONATE INDEX	.188	.590
CALCIUM CARBONATE SCALING	LIKELY	LIKELY
CALCIUM SULFATE INDEX	-28.	-28.
CALCIUM SULFATE SCALING	UNLIKELY	UNLIKELY

27

**HELMUR
CORP.**

SITE CONSTRUCTION
CONTRACT PUMPING
P.O. BOX 1507
DURANGO, CO 81302
(303)-247-4036

TO: Charles Gholson DATE: 7/31/87

Here is a copy of the
water analysis on the
Sovereign Oil - Navajo Lake #1
NW 1/4 Sec. 9-32N-6W

Also a copy of the letter I
had written to Mel McCoy

John Heller

WELL FILE

E-9-32-6
SOVEREIGN OIL
CO.
NAVAJO LAKE
32-6 #1

RECEIVED
AUG 03 1987
OIL CON. DIV.
DIST. 9

HELMUR CORPORATION
POST OFFICE BOX 1507
633 TURNER DRIVE
DURANGO, COLORADO 81302-1507

303/247-4036

March 5, 1987

Mr. Mel McCoy
Sovereign Oil Company
1859 Main Street
Sarasota, Florida 33577

Re: Navajo Lake 32-6 No. 1
San Juan County, N. M.

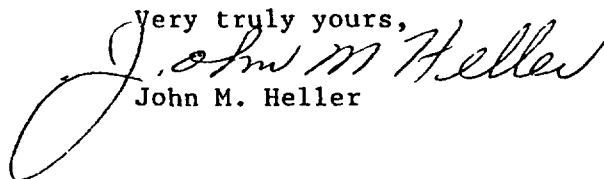
Dear Mel:

Attached is the recent water analysis on the captioned well along with reproduced sections of various water requirements for pit retention and disposal for the area.

There is no way that the well can continue to qualify for the present method of disposal. The total solids and water volume are too high. Under the present gas prices that I presume you are getting, there is not a method of water disposal applicable in which it would be feasible.

The present pit is full and we need your permission to shut-in. Weather is very wet and the roads are nearing the impassable stage at this time.

Very truly yours,


John M. Heller

Attachments - 3

*Mel called 4/22/87 - Turn on well when pit recedes
& take chance exit
Sent copies of NTL-2B & NM Order R-7940*

(29)



New Mexico Health and Environment Department
SCIENTIFIC LABORATORY DIVISION
700 Camino de Salud NE
Albuquerque, NM 87106 — (505) 841-2555

854 WNN

GENERAL WATER CHEMISTRY and NITROGEN ANALYSIS

DATE RECEIVED	10/9/87	LAB NO.	WC 4680	USER CODE	<input type="checkbox"/> 59300 <input type="checkbox"/> 59600 <input checked="" type="checkbox"/> OTHER: 82235
Collection DATE	10/7/87	SITE INFORMATION	Sample location		
Collection TIME	1100		32N 6W sec 9		
Collected by — Person/Agency		Collection site description			
Olson, Anderson		unlined produced water pit			
10CD					

SEND
FINAL
REPORT
TO

ENVIRONMENTAL BUREAU
NM OIL CONSERVATION DIVISION
State Land Office Bldg, PO Box 2088
Santa Fe, NM 87504-2088

Attn: David Boyer

Phone: 827-5812

EA-32-6

Station/
well code Navajo Lake 32-B#1
Owner Sovereign Oil Co.

SAMPLING CONDITIONS

<input type="checkbox"/> Bailed	<input type="checkbox"/> Pump	Water level	Discharge	Sample type
<input checked="" type="checkbox"/> Dipped	<input type="checkbox"/> Tap			grab
pH (00400)	9.5	Conductivity (Uncorrected)	Water Temp. (00010)	Conductivity at 25°C (00094)
		33000 μ mho	17 °C	33000 μ mho

Field comments

ILLEGIBLE

SAMPLE FIELD TREATMENT — Check proper boxes

No. of samples submitted	1	<input checked="" type="checkbox"/> NF: Whole sample (Non-filtered)	<input type="checkbox"/> F: Filtered in field with 0.45 μ m membrane filter	<input type="checkbox"/> A: 2 ml H ₂ SO ₄ /L added
<input checked="" type="checkbox"/> NA: No acid added		<input type="checkbox"/> Other-specify:		<input type="checkbox"/> A: 5ml conc. HNO ₃ added <input type="checkbox"/> A: 4ml fuming HNO ₃ added

ANALYTICAL RESULTS from SAMPLES

NA	Units	Date analyzed	From NF, NA Sample:	Date Analyzed
<input checked="" type="checkbox"/> Conductivity (Corrected) 25°C (00095)	34608 μ mho	12/5	<input checked="" type="checkbox"/> Calcium	32 mg/l 11/23
<input type="checkbox"/> Total non-filterable residue (suspended) (00530)			<input checked="" type="checkbox"/> Potassium	54.6 mg/l 11/16
<input type="checkbox"/> Other:			<input checked="" type="checkbox"/> Magnesium	29 mg/l 11/23
<input type="checkbox"/> Other:			<input checked="" type="checkbox"/> Sodium	12880 mg/l 11/16
<input type="checkbox"/> Other:			<input checked="" type="checkbox"/> Bicarbonate	192 mg/l 11/23
A-H₂SO₄			<input checked="" type="checkbox"/> Chloride	11,000 mg/l 12/4
<input type="checkbox"/> Nitrate-N +, Nitrate-N total (00630)			<input checked="" type="checkbox"/> Sulfate	2.5 mg/l "
<input type="checkbox"/> Ammonia-N total (00610)			<input checked="" type="checkbox"/> Total Solids	25186 mg/l 12/2
<input type="checkbox"/> Total Kjeldahl-N ()			<input type="checkbox"/>	
<input type="checkbox"/> Chemical oxygen demand (00340)			<input type="checkbox"/>	
<input type="checkbox"/> Total organic carbon ()			<input checked="" type="checkbox"/> Cation/Anion Balance	
<input type="checkbox"/> Other:			Analyst	Date Reported
<input type="checkbox"/> Other:				12/10/87
Laboratory remarks			Reviewed by	
Other constituents? Interference from the NaCl			[Signature]	

FOR OCD USE -- Date Owner Notified

Phone or Letter?

Initials

30

CATIONS			
ANALYTE	MEQ.	PPM	DET. LIMIT
Ca	1.60	32.00	<3.0
Mg	2.38	29.00	<0.3
Na	560.24	12880.00	<10.0
K	1.40	54.60	<0.3
Mn	0.00	0.00	
Fe	0.00	0.00	
SUMS	565.62	12995.60	
Total Dissolved Solids=			28186
Ion Balance =			180.39%

ANIONS			
ANALYTE	MEQ.	PPM	DET. LIMIT
HCO3	3.15	192.00	<1.0
SO4	0.10	5.00	<10.0
CL	310.30	11000.0	<5.0
NO3	0.00	0.00	< 0.
CO3	0.00	0.00	< 1.
NH3	0.00	0.00	< 0.
PO4	0.00	0.00	< 0.
	313.55	11197.00	

WC No. = 8704680
Date out/By CS 1/5/67

REPORT TO:

David Boyer

S.L.D. No. OR-

1620

N.M. Oil Conservation Division

DATE REC.

10-9-87

87-1620-C

P. O. Box 2088

DEC 14 1987

Santa Fe, N.M. 87504-2088

PRIORITY

3

PHONE(S):

327-5812

USER CODE:

8 2 2 3 5

SUBMITTER:

David Boyer

CODE:

12 6 0

SAMPLE COLLECTION CODE: (YYMMDDHHMMIII)

87111007111002WCA

SAMPLE TYPE: WATER ☒SOIL ☐FOOD ☐OTHER: ☐

CODE:

1 1 1

COUNTY: San Juan

CITY: North Navajo Lake

CODE:

1 1 1

LOCATION CODE: (Township-Range-Section-Tracts)

3 2 N + 0 6 W + 0 9 + 1 3 0 (10N06E24342)

ANALYSES REQUESTED: Please check the appropriate box(es) below to indicate the type of analytical screens required. Whenever possible list specific compounds suspected or required.

PURGEABLE SCREENS

☒ (753) Aliphatic Purgeables (1-3 Carbons)☒ (754) Aromatic & Halogenated Purgeables☐ (765) Mass Spectrometer Purgeables☐ (766) Trihalomethanes

Other Specific Compounds or Classes

EXTRACTABLE SCREENS

☐ (751) Aliphatic Hydrocarbons☐ (760) Organochlorine Pesticides☐ (755) Base/Neutral Extractables☐ (758) Herbicides, Chlorophenoxy acid☐ (759) Herbicides, Triazines☐ (760) Organochlorine Pesticides☐ (761) Organophosphate Pesticides☐ (767) Polychlorinated Biphenyls (PCB's)☐ (764) Polynuclear Aromatic Hydrocarbons☐ (762) SDWA Pesticides & Herbicides

Remarks:

FIELD DATA:

pH= 9.5; Conductivity= 33000 umho/cm at 17 °C; Chlorine Residual= mg/l

Dissolved Oxygen= mg/l; Alkalinity= mg/l; Flow Rate

Depth to water ft.; Depth of well ft.; Perforation Interval - ft.; Casing:

Sampling Location, Methods and Remarks (i.e. odors, etc.)

Sovereign Oil Co. - Navajo Lake 32-6#1 produced water pit. (Gas is under sig. Pict. CL 555)

I certify that the results in this block accurately reflect the results of my field analyses, observations and activities.(signature collector): With Ben Method of Shipment to the Lab: hand

This form accompanies 2 Septum Vials, Glass Jugs, and/or

Samples were preserved as follows:

☐ NP: No Preservation; Sample stored at room temperature.☒ P-Ice: Sample stored in an ice bath (Not Frozen).☐ P-Na₂S₂O₃: Sample Preserved with Sodium Thiosulfate to remove chlorine residual.

CHAIN OF CUSTODY

I certify that this sample was transferred from to

at (location) on - and that

the statements in this block are correct. Evidentiary Seals: Not Sealed ☐ Seals Intact: Yes ☐ No ☐

Signatures

For OCD Use: Date Owner Notified Phone or Letter? Initials

32



STATE OF NEW MEXICO
ENERGY, MINERALS and NATURAL RESOURCES DEPARTMENT
OIL CONSERVATION DIVISION
AZTEC DISTRICT OFFICE

DRUG FILE

BRUCE KING
GOVERNOR

ANITA LOCKWOOD
CABINET SECRETARY

1000 RIO BRAZOS ROAD
AZTEC, NEW MEXICO 87410
(505) 334-6178

July 27, 1992

Sovereign Oil Co.
2885 E. Aurora Ave., Suite 31
Boulder, CO 80303

RE: Temporarily Abandoned Wells
Navajo Lake 32-6, E-09-32N-06W

To Whom It May Concern:

Our records indicate that you failed to respond to Memorandum (3-91-10) dated December 27, 1991. The well is still inactive and requires P&A or TA approval under Rules 201, 202 and 203. Plans to bring this well into compliance were to be submitted to this office by June 30, 1992 and work completed by December 31, 1992. Rule 203 requires that a notice of intent to temporarily abandon a well be submitted on a Sundry Notice (OCD Form C-103) and that a mechanical integrity test (MIT) be conducted on the casing prior to final approval. If there is a notice of intent to P&A filed and approved for this well the work is to be completed by December 31, 1992, or the well is to be tested and approved for TA.

A case will be docketed for hearing to show cause why referenced well should not be plugged and abandoned in accordance with a Division approved plugging program.

Sincerely,

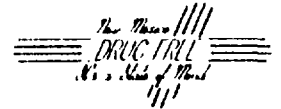
Dianna K. Fairhurst

Dianna K. Fairhurst
Deputy Oil & Gas Inspector

DKF/sh

CC: TA File
Well File
DKF File

33



STATE OF NEW MEXICO
ENERGY, MINERALS and NATURAL RESOURCES DEPARTMENT
OIL CONSERVATION DIVISION
AZTEC DISTRICT OFFICE

BRUCE KING
GOVERNOR

ANITA LOCKWOOD
CABINET SECRETARY

1000 RIO BRAZOS ROAD
AZTEC, NEW MEXICO 87410
(505) 334-6178

July 27, 1992

21401

Sovereign Oil Co.
2885 E. Aurora Ave., Suite 31
Boulder, CO 80303

7490 Clubhouse Rd.

Suite 102

Boulder CO.

80301

RE: Temporarily Abandoned Wells
Navajo Lake 32-6, E-09-32N-06W

Int. & ext. petroleum
mechanical integrity
test 2436

~~247-0347~~
no

To Whom It May Concern:

Our records indicate that you failed to respond to Memorandum (3-91-10) dated December 27, 1991. The well is still inactive and requires P&A or TA approval under Rules 201, 202 and 203. Plans to bring this well into compliance were to be submitted to this office by June 30, 1992 and work completed by December 31, 1992. Rule 203 requires that a notice of intent to temporarily abandon a well be submitted on a Sundry Notice (OCD Form C-103) and that a mechanical integrity test (MIT) be conducted on the casing prior to final approval. If there is a notice of intent to P&A filed and approved for this well the work is to be completed by December 31, 1992, or the well is to be tested and approved for TA.

A case will be docketed for hearing to show cause why referenced well should not be plugged and abandoned in accordance with a Division approved plugging program.

Sincerely,

Dianna K. Fairhurst

John Robinson

Dianna K. Fairhurst
Deputy Oil & Gas Inspector

Judy 385 6522
Dick GJera 385-6531

DKF/sh

CC: TA File
Well File
DKF File

34



STATE OF NEW MEXICO
ENERGY, MINERALS AND NATURAL RESOURCES DEPARTMENT
OIL CONSERVATION DIVISION
AZTEC DISTRICT OFFICE



GARY E. JOHNSON
GOVERNOR

JENNIFER A. SALISBURY
CABINET SECRETARY

1000 RIO BRAZOS ROAD
AZTEC, NEW MEXICO 87410
(505) 334-6178 FAX: (505) 334-6170

May 22, 1995

Certified: P 987 892 143

Sovereign Oil Co
2885 E Aurora Ave Ste 31
Boulder Co 80303

Soveriegn Oil Co
7490 Clubhouse Rd Ste 102
Boulder Co 80301

RE: Navajo Lake 32-6 #1, E-09-32N-06W, #30-045-25790, 900 FWL/1730 FNL

To whom it may concern:

The referenced well is in violation of rule #201 & #203. Therefore you are hereby directed to plug and abandon, return well to production or temporarily abandon it under rule #203 within 30 days.

If you fail to bring the well into compliance, we will schedule a show cause hearing as to why the well should not be plugged and abandoned.

Sincerely,

Johnny Robinson
Deputy Oil & Gas Inspector

JR/sh

cc: Rand Carroll
well file
Allied Fidelity Insurance Co

35

July 31, 1995
Rand Carroll
New Mexico Oil Conservation
2040 s Pacheco
Sante Fe NM 87505

RE : Sovereign Oil Co Navajo Lake 32-6#1
E-09-32N-06W 30-045-25790

Dear Rand,

Please call for a hearing on the Navajo Lake 32-6#1. My letters to the operator were returned & the listed phone number had a answering machine which I left a message to call the OCD and they never returned my call. As I understand, the well was at one time in a bankruptcy court and was awarded to Richmond Petroleum Inc. I sent a letter to them and they denied any knowledge of the well. There was never a C104 filed for a change of ownership. The bonding company, Allied Fidelity Ins. Is no longer in business. I checked with Diane Richardson and she has no bond for the well. The well is located on a wildlife refuge & access will be limited later in the year. Please follow through as soon as you can I would like to plug the well before winter.

I have enclosed the paper work for the hearing.

1. Plugging procedure.
2. Well schematic.
3. A map.
4. Picture of well.
5. A copy of well files.
6. A copy of letter from Richmond Pet inc.

BEFORE EXAMINER STOGNER	
OIL CONSERVATION DIVISION	
OCD	EXHIBIT NO. 2
CASE NO.	11380

①

PLUGGING PROCEDURE

Sovereign Oil Co.
Navajo Lake 32-6 #1
E-09-32N-06W
30-045-25790

Presumed downhole conditions and equipment
See attached schematic


Pull all production equipment and nipple up BOP

1. Go in hole with tbg. and a retainer and set at 2776 ft. Pump sufficient amount of cement to cover perfs. And 100 % excess outside of csg. Sting out of retainer & spot cement up to 2510 ft.
2. Load hole with 8.4 lb. 40 visc. Mud and test casing.
3. Pull tbg. To 1671 ft. & spot a plug from 1671 ft. to 1522 ft.
4. GIH with wireline to 306 ft. and perforate two shots.
5. Pump cement down 4 ½ csg. And circulate cement to the surface.
7. Top off csg. with cement and set a dry hole marker.
8. Restore location .

OPERATOR SOVEREIGN OIL CO.		PROPERTY NAME NAVAJO LAKE 32-6	WELL NO. 1
-------------------------------	--	-----------------------------------	---------------

DATE 7-31-95	LOCATION ULSTR) E-09-32N-06W	FOOTAGE 1730 FNL & 900 FWL
-----------------	---------------------------------	-------------------------------

API NO. 30-045-25790	6169 GR	POOL W/C PC
-------------------------	---------	----------------

Tops		
OJO ALAMO	1572 FT.	
KIRTLAND	1621 FT.	
FRUITLAND	2560 FT.	
P.C.	2781 FT.	
CASING RECORD: 8 5/8 24# 256 FT. 12 1/4 hole 250 sxs, Class G W/ 2 % CA.CL. & 4 % GEL CIRC. CEMENT TO SURF. (CALC.) 4 1/2 11.6 # 3180 FT. 7 7/8 hole T.O.C. 607 FT. (CALC.) PERFS. 2826 FT.- 3020 FT. TBG. 2860 FT. PBD 3115'		256' 8 5/8 Circ. 607 ft. T.O.C. 3826' Perfs 3020' 3115 PBD 3180' 4 1/2

3

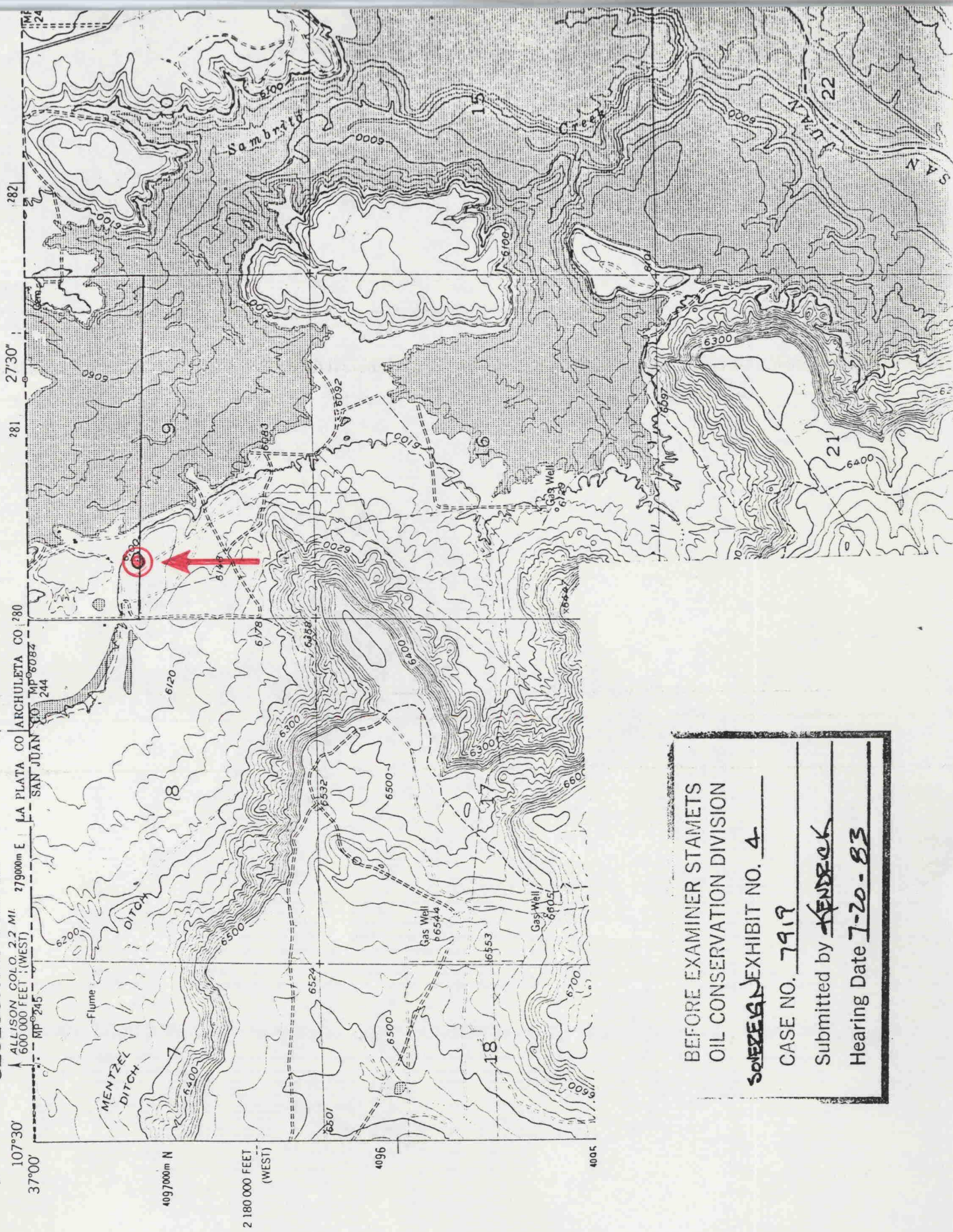
INJECTION			PRODUCTION				DISPOSITION OF OIL, GAS, AND WATER									
7 POOL NO. AND NAME Property No. and Name Well No. & U.I.-S-T-R API No.,	8 C O D E 1	9 Volume	10 Pressure	11 C O D E 2	12 Barrels of oil/conden- sate produced	13 Barrels of water produced	14 MCF Gas Produced	15 Days Prod- uced	16 C O D E 3	17 Point of Disposition	18 Gas BTU or Oil API Gravity	19 Oil on hand at beginning of month	20 Volume (Bbls/mcf)	21 Transporter OGRID	22 C O D E 4	23 Oil on hand at end of month
17290 DENTON WOLF CAMP 003453 Dickinson, B. C. "A" 001 L - 01 - 15S - 37E 30 - 025 - 05222	P				16	2789	0	1	0 W	0849110 0849150		281	2789		297	
003506 State "T" 001 N - 02 - 15S - 37E 30 - 025 - 05226	S				0	0	0	0								
005 K - 02 - 15S - 37E 30 - 025 - 05230	S				0	0	0	0								
006 F - 02 - 15S - 37E 30 - 025 - 05231	P				295	6411	142	30								
008 M - 02 - 15S - 37E 30 - 025 - 05233	P				1050	3874	193	30	0 G G W	0849310 0849330 0849350	41.4 1407	67	1275 304 31 10285	037480 011447 U	137	

4458 11 SE
(TIFFANY)

UNITED STATES
DEPARTMENT OF THE INTERIOR
GEOLOGICAL SURVEY



Sovereign Oil
NEVADO LAKE 32-6 #1
E-9-32N-6W



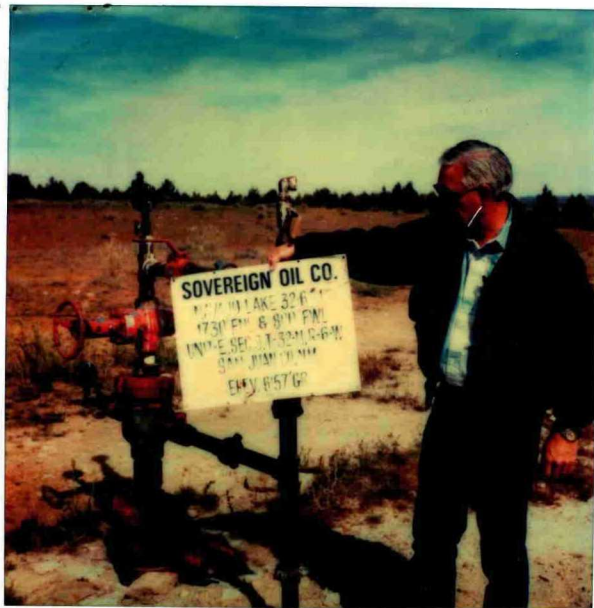
BEFORE EXAMINER STAMETS
OIL CONSERVATION DIVISION

~~SOVEREIGN~~ EXHIBIT NO. 4

CASE NO. 7919

Submitted by ~~KENDRICK~~

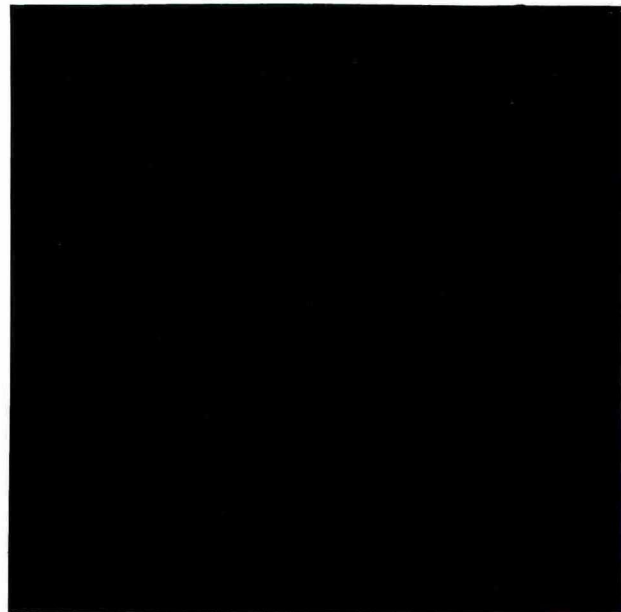
Hearing Date 7-20-83



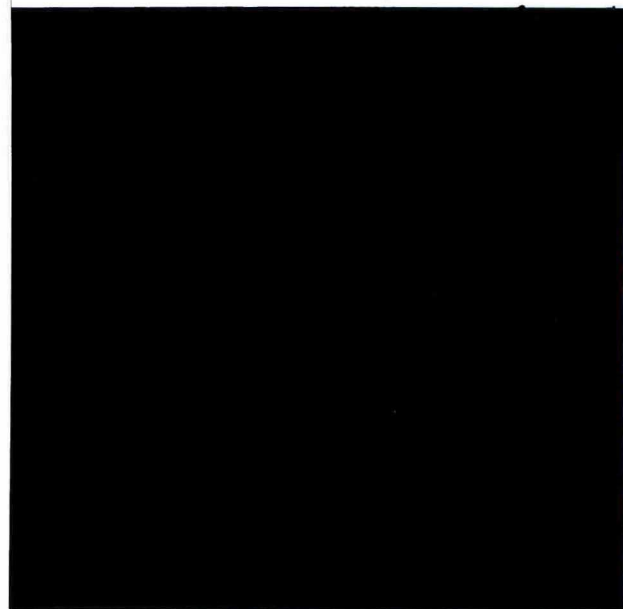
5 cont



5



Sovereign oil 32-6*1
E-9-32N-6W



Sovereign 32-6*1
E-9-32N-6W

**STATE OF NEW MEXICO
ENERGY, MINERALS AND NATURAL RESOURCES DEPARTMENT
OIL CONSERVATION DIVISION**

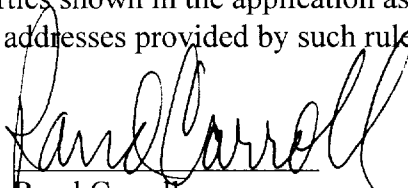
In the matter of the hearing called
by the Oil Conservation Division
for the purpose of considering:

CASE NO. 11380

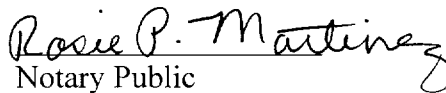
Requiring the plugging of the Sovereign
"32-6" Well No. 1 (API No. 30-045-25790)
operated by Sovereign Oil Company.

CERTIFICATE OF MAILING AND COMPLIANCE WITH ORDER R-8054

RAND CARROLL, attorney for the New Mexico Oil Conservation Division states that the notice provisions of Division Rule 1207 (Order R-8054) have been complied with, that Applicant has caused to be conducted a good faith diligent effort to find the correct addresses of all interested parties entitled to receive notice, that on the 17th day of August, 1995 I caused to be sent, by certified mail return receipt requested, notice of this hearing and a copy of the application for the referenced case along with the cover letter, at least twenty days prior to the hearing set for September 7, 1995, to the parties shown in the application as evidenced by the attached copies of receipt cards, and correct addresses provided by such rule.


Rand Carroll

SUBSCRIBED AND SWORN to before me on this 7th day of September 1995.

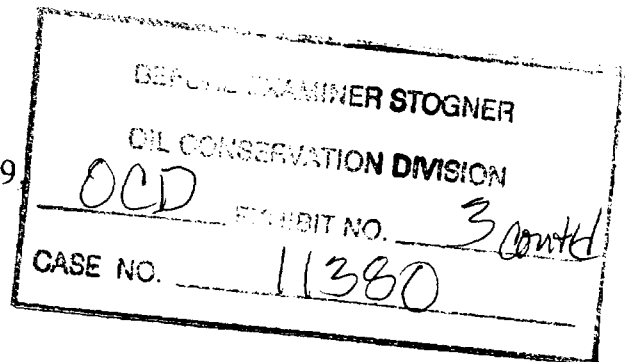

Notary Public

My Commission Expires: 2/17/96

BEFORE EXAMINER STOGNER	
OIL CONSERVATION DIVISION	
OCD	EXHIBIT NO. 3
CASE NO. 11380	

(1a)

August 17, 1995

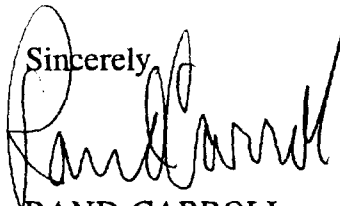
CERTIFIED - RETURN
RECEIPT REQUESTEDSovereign Oil Co.
2885 E. Aurora Ave, Ste 31
Boulder, Co. 80303Sovereign Oil Co.
7490 Clubhouse Road, Ste 102
Boulder, Co. 80301Sovereign Oil Company
1859 Main Street
Sarasota, Fl. 33577Sovereign Oil Company
3300 Mitchell Lane, Ste 175
Boulder, Co. 80301Richmond Petroleum Inc.
4925 Greenville Avenue, #925
Dallas, Tx. 75206Re: Navajo Lake 32-6 #1, Unit E, Section 9
Township 32 North, Range 6 West,
San Juan County, New Mexico
Plugging Bond

Gentlemen:

Enclosed is a copy of the ad of the Examiner Hearing to be held on Thursday, September 7, 1995, at 8:15 a.m. in the Oil Conservation Division Hearing Room, 2040 S. Pacheco, Santa Fe,

New Mexico. Case 11380 concerns the above-captioned subject matter.

Sincerely,

A handwritten signature in black ink, appearing to read "Rand Carroll", written over the word "Sincerely,".

RAND CARROLL
Legal Counsel

RC/dr

enc.

~~NOTICE OF PUBLICATION~~
STATE OF NEW MEXICO
ENERGY, MINERALS AND NATURAL RESOURCES DEPARTMENT
OIL CONSERVATION DIVISION
SANTA FE, NEW MEXICO

The State of New Mexico be its Oil Conservation Division hereby gives notice pursuant to law and Rules and Regulations of said Division promulgated thereunder of the following public hearing to be held at 8:15 A.M. on **September 7, 1995**, 2040 South Pacheco, Oil Conservation Division Hearing Room, Santa Fe, New Mexico, before an examiner duly appointed for said hearing as provided by law. If you are an individual with a disability who is in need of a reader, amplifier, qualified sign language interpreter, or any other form of auxiliary aid or service to attend or participate in the hearing, please contact Florene Davidson at 505-827-7132 or through the New Mexico Relay Network, 1-800-659-1779 by August 28, 1995. Public documents, including the agenda and minutes, can be provided in various accessible forms. Please contact Florene Davidson if a summary or other type of accessible form is needed.

STATE OF NEW MEXICO TO:
All named parties and persons
having any right, title, interest
or claim in the following cases
and notice to the public.

(NOTE: All land descriptions herein refer to the New Mexico Principal Meridian whether or not so stated.)

CASE 11373:

Application of Harvey E. Yates Company
for a unit agreement, Lea County, New
Mexico.

Applicant, in the above-styled cause, seeks approval of the Flint Unit Agreement for an area comprising 8,446.58 acres, more or less, of State lands in Townships 17 and 18 South, Ranges 35 and 36 East. Said unit area is centered approximately 8.5 miles east by south of Buckeye, New Mexico.

- (4) Mesa Kirtland "11" Well (API No. 30-045-25440), located 1190' FNL & 1850' FWL (Unit C) of Section 11, Township 29 North, Range 15 West, San Juan County;
- (5) Hatch Well No. 1 (API No. 30-045-24), located 660' FNL & 1980' FWL (Unit C) of Section 14, Township 29 North, Range 15 West, San Juan County; and,
- (4) Libra Well No. 1 (API No. 30-045-852), located 810' FNL & 1800' FWL (Unit C) of Section 16, Township 32 North, Range 13 West, San Juan County.

CASE 11380:

In the matter of the hearing called by the Oil Conservation Division ("Division") on its own motion to permit Sovereign Oil Company, operator, Allied Fidelity Insurance Company, surety, and all other interested parties to appear and show cause why the Sovereign "32-6" Well No. 1 (API No. 30-045-25790), located 1730 feet from the North line and 900 feet from the West line (Unit E) of Section 9, Township 32 North, Range 6 West, San Juan County, New Mexico (which is approximately 14.5 miles northeast by north of the Navajo Reservoir Dam), should not be plugged and abandoned in accordance with a Division-approved plugging program. Should the operator fail to properly plug said well, the Division should then be authorized to take such action as is deemed necessary to have this well properly plugged and abandoned and to direct the operator to pay the costs of such plugging.

CASE 11381:

In the matter of the hearing called by the Oil Conservation Division upon its own motion to consider:

The creation of the following pool in Eddy County, New Mexico:

North Pierce Crossing-Wolfcamp Gas Pool
in Township 24 South, Range 29 East;

The extension of the Southeast Acme-San Andres Pool in Chaves County, New Mexico;

7 765 963 340

Receipt for Certified Mail
No Insurance Coverage Provided
Do not use for International Mail
(See Reverse)

Sent to
RICHMOND PETROLEUM INC
Street and No.
4925 GREENVILLE AVE, #
P.O., State and ZIP Code
DALLAS, TX. 75206

Postage	\$
Certified Fee	
Special Delivery Fee	
Restricted Delivery Fee	
Return Receipt Showing to Whom & Date Delivered	
Return Receipt Showing to Whom, Date, and Addressee's Address	
TOTAL Postage & Fees	\$
Postmark or Date	

PS Form 3800, March 1993

7 765 963 339

Receipt for Certified Mail
No Insurance Coverage Provided
Do not use for International Mail
(See Reverse)

Sent to
SOVEREIGN OIL CO.
Street and No.
1859 MAIN ST
P.O., State and ZIP Code
SARASOTA, FL. 33577

Postage	\$
Certified Fee	
Special Delivery Fee	
Restricted Delivery Fee	
Return Receipt Showing to Whom & Date Delivered	
Return Receipt Showing to Whom, Date, and Addressee's Address	
TOTAL Postage & Fees	\$
Postmark or Date	

PS Form 3800, March 1993

RETURN RECEIPT SERVICE

Write "Return Receipt Requested" on the mailpiece below the article number. The Return Receipt will show to whom the article was delivered and the date received.

Article Addressed to:
RICHMOND PETROLEUM INC.
925 GREENVILLE AVE, #925
DALLAS, TX. 75206

Signature (Addressee)
[Signature]

Signature (Agent)
[Signature]

4a. Article Number
Z 765 963 343

4b. Service Type
☐ Registered
☒ Certified
☐ Express Mail
☐ Return Receipt for Merchandise
☐ Insured
☐ COD

7. Date of Delivery
8-26-95

8. Addressee's Address (Only if requested and fee is paid)

I also wish to receive the following services (for an extra fee):
☐ 1. Addressee's Address
☐ 2. Restricted Delivery
☐ 3. Consult postmaster for fee.

Thank you for using Return Receipt Service.

7 765 963 340

Receipt for Certified Mail
No Insurance Coverage Provided
Do not use for International Mail
(See Reverse)

Sent to
SOVEREIGN OIL CO.
Street and No.
7490 CLUBHOUSE RD STE 102
P.O., State and ZIP Code
BOULDER, CO. 80301

Postage	\$
Certified Fee	
Special Delivery Fee	
Restricted Delivery Fee	
Return Receipt Showing to Whom & Date Delivered	
Return Receipt Showing to Whom, Date, and Addressee's Address	
TOTAL Postage & Fees	\$
Postmark or Date	

PS Form 3800, March 1993

7 765 963 339

Receipt for Certified Mail
No Insurance Coverage Provided
Do not use for International Mail
(See Reverse)

Sent to
SOVEREIGN OIL CO
Street and No.
2885 E AURORA AVE STE 31
P.O., State and ZIP Code
BOULDER, CO 80303

Postage	\$
Certified Fee	
Special Delivery Fee	
Restricted Delivery Fee	
Return Receipt Showing to Whom & Date Delivered	
Return Receipt Showing to Whom, Date, and Addressee's Address	
TOTAL Postage & Fees	\$
Postmark or Date	

PS Form 3800, March 1993

7 765 963 342

Receipt for Certified Mail
No Insurance Coverage Provided
Do not use for International Mail
(See Reverse)

Sent to
SOVEREIGN OIL COMPANY
Street and No.
3300 MITCHELL LANE #1
P.O., State and ZIP Code
BOULDER, CO. 80301

Postage	\$
Certified Fee	
Special Delivery Fee	
Restricted Delivery Fee	
Return Receipt Showing to Whom & Date Delivered	
Return Receipt Showing to Whom, Date, and Addressee's Address	
TOTAL Postage & Fees	\$
Postmark or Date	

PS Form 3800, March 1993

(5)

Fold at line over top of envelope to the right of the return address

Fold at line over top of envelope to the right of the return address

Fold at line over top of envelope to the right of the return address

State of New Mexico

ENERGY, MINERALS and NATURAL RESOURCES DEPARTMENT

2040 South Pacheco

P.O. Box 6429

Santa Fe, New Mexico 87505-5472

Name

First Notice

Second Notice

Return

8/28

9/12

CERTIFIED

Z 765 963 341

MAIL

SOVEREIGN OIL COMPANY

1859 MAIN ST

SARASOTA, FL. 33577

CERTIFIED - RETURN
RECEIPT REQUESTED

FOR
3617
8-21-95

[Handwritten signature]

Is your **RETURN ADDRESS** completed on the reverse side?

SENDER:

- Complete items 1 and/or 2 for additional services.
- Complete items 3, and 4a & b.
- Print your name and address on the reverse of this form so that we can return this card to you.
- Attach this form to the front of the mailpiece, or on the back if space does not permit.
- Write "Return Receipt Requested" on the mailpiece below the article number.
- The Return Receipt will show to whom the article was delivered and the date delivered.

I also wish to receive the following services (for an extra fee):

- ☐ Addressee's Address
 - ☐ Restricted Delivery
- Consult postmaster for fee.

3. Article Addressed to:

SOVEREIGN OIL COMPANY
1859 MAIN ST
SARASOTA, FL. 33577

4a. Article Number

7 765 963 341

4b. Service Type

- ☐ Registered ☐ Insured
- ☒ Certified ☐ COD
- ☐ Express Mail ☐ Return Receipt for Merchandise

7. Date of Delivery

8. Addressee's Address (Only if requested and fee is paid)

5. Signature (Addressee)

6. Signature (Agent)

PS Form 3811, December 1991 * U.S.G.P.O. : 1892-307-530 **DOMESTIC RETURN RECEIPT**

Thank you for using Return Receipt Service.

2

CERTIFIED - RETURN
RECEIPT REQUESTED

MAIL

Z 765 963 340

CERTIFIED

2040 South Pacheco
P.O. Box 6429
Santa Fe, New Mexico 87505-5472

Memo _____
First Notice 8/22
Second Notice _____
Return 9/6

State of New Mexico
ENERGY, MINERALS and NATURAL RESOURCES DEPARTMENT

SOVEREIGN OIL CO.
7490 CLUBHOUSE RD
BOULDER, CO 80301

STE 102, ED

NO MAIL RECEIPT
NO SUCH NUMBER

VACANT

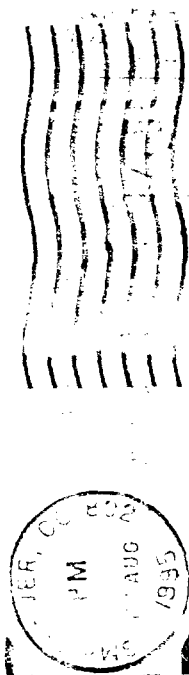
TEMPORARILY AWAY

DATE

ROUTE #

CARRIER

ATTEMPTED, NOT KNOWN



State of New Mexico
ENERGY, MINERALS and NATURAL RESOURCES DEPARTMENT

2040 South Pacheco
P.O. Box 6429
Santa Fe, New Mexico 87505-5472

Not in Directory

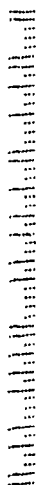
CERTIFIED

Z 596 596 Z

MAIL

SOVEREIGN OIL COMPANY
3300 MITCHELL LANE #175
BOULDER, CO. 80301

CERTIFIED - RETURN
RECEIPT REQUESTED



4

Is your RETURN ADDRESS completed on the reverse side?

SENDER:

- Complete items 1 and/or 2 for additional services.
- Complete items 3, and 4a & b.
- Print your name and address on the reverse of this form so that we can return this card to you.
- Attach this form to the front of the mailpiece, or on the back if space does not permit.
- Write "Return Receipt Requested" on the mailpiece below the article number.
- The Return Receipt will show to whom the article was delivered and the date delivered.

3. Article Addressed to:

**SOVEREIGN OIL COMPANY
7490 CLUBHOUSE RD = STE 102
BOULDER, CO. 80301**

4a. Article Number

Z 765 963 340

4b. Service Type

- ☐ Registered ☐ Insured
☒ Certified ☐ COD
☐ Express Mail ☐ Return Receipt for Merchandise

7. Date of Delivery

9

Signature (Addressee)

9

Signature (Agent)

8. Addressee's Address (Only if requested and fee is paid)

DOMESTIC RETURN RECEIPT

PS Form 3811, December 1991 *U.S. GPO: 1993-352-714

Is your RETURN ADDRESS completed on the reverse side?

SENDER:

- Complete items 1 and/or 2 for additional services.
- Complete items 3, and 4a & b.
- Print your name and address on the reverse of this form so that we can return this card to you.
- Attach this form to the front of the mailpiece, or on the back if space does not permit.
- Write "Return Receipt Requested" on the mailpiece below the article number.
- The Return Receipt will show to whom the article was delivered and the date delivered.

I also wish to receive the following services (for an extra fee):

1. ☐ Addressee's Address

2. ☐ Restricted Delivery

Consult postmaster for fee.

4a. Article Number

Z 765 963 342

4b. Service Type

- ☐ Registered ☐ Insured
☒ Certified ☐ COD
☐ Express Mail ☐ Return Receipt for Merchandise

7. Date of Delivery

8. Addressee's Address (Only if requested and fee is paid)

5. Signature (Addressee)

6. Signature (Agent)

**SOVEREIGN OIL COMPANY
3300 MITCHELL LANE #175
BOULDER, CO. 80301**

PS Form 3811, December 1991

DOMESTIC RETURN RECEIPT

*U.S. GPO: 1993-352-714

Thank you for using Return Receipt Service.

9

Thank you for using Return Receipt Service.