

DISTRICT I
P. O. Box 1980, Hobbs, NM 88240

DISTRICT II
P. O. Drawer DD, Artesia, NM 88210

DISTRICT III
1000 Rio Brazos Rd., Aztec, NM 87410

DISTRICT IV
P. O. Box 2088, Santa Fe, NM 87504-2088

State of New Mexico
Energy, Minerals and Natural Resources Department

OIL CONSERVATION DIVISION

PO Box 2088
Santa Fe, NM 87504-2088

Form C-102
Revised February 10, 1994

Instructions on back

Submit to Appropriate District Office

State Lease-4 copies

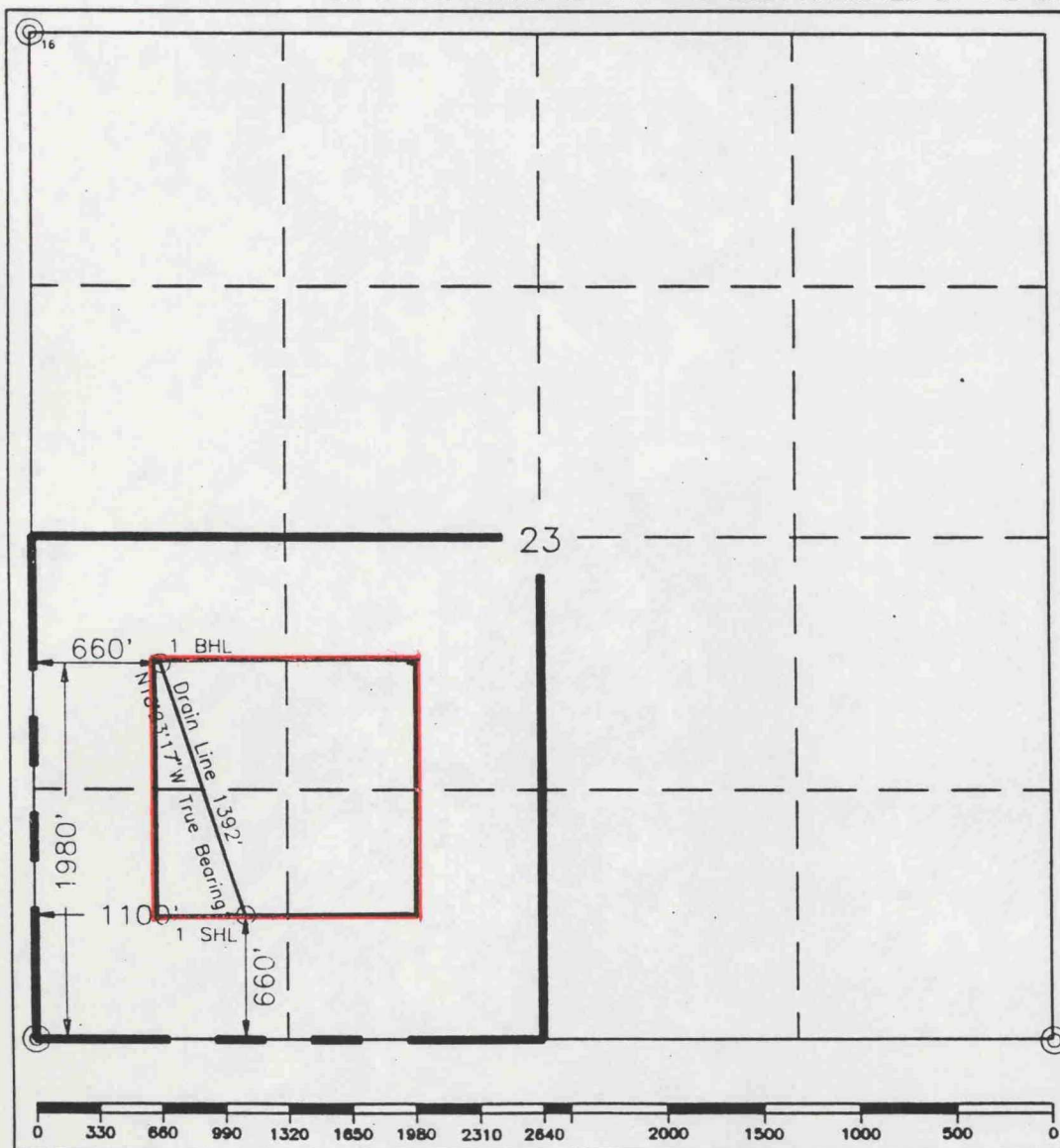
Fee Lease-3 copies

☐ AMENDED REPORT

WELL LOCATION AND ACREAGE DEDICATION PLAT

¹ API Number		² Pool Code		³ Pool Name Rhodes Yates Seven Rivers (Gas)					
⁴ Property Code		⁵ Property Name Rhodes "23" Federal Com.						⁶ Well Number 1	
⁷ OGRID No. 22351		⁸ Operator Name TEXACO EXPLORATION & PRODUCTION, INC.						⁹ Elevation 2984'	
¹⁰ Surface Location									
UL or lot no. M	Section 23	Township 26-S	Range 37-E	Lot Idn	Feet from the 660'	North/South line South	Feet from the 1100'	East/West line West	⁷ County Lea
¹¹ Bottom Hole Location If Different From Surface									
UL or lot no. L	Section 23	Township 26-S	Range 37-E	Lot Idn	Feet from the 1980'	North/South line South	Feet from the 660'	East/West line West	⁷ County Lea
¹² Dedicated Acres 160		¹³ Joint or Infill		¹⁴ Consolidation Code		¹⁵ Order No.			

NO ALLOWABLE WILL BE ASSIGNED TO THIS COMPLETION UNTIL ALL INTERESTS HAVE BEEN CONSOLIDATED
OR A NON-STANDARD UNIT HAS BEEN APPROVED BY THE DIVISION.



¹⁰ OPERATOR CERTIFICATION	
I hereby certify that the information contained herein is true and complete to the best of my knowledge and belief.	
Signature <i>C. Wade Howard</i>	
Printed Name C. Wade Howard	
Position Engineer's Assistant	
Company Texaco Expl. & Prod. Inc.	
Date October 24, 1996	
¹⁸ SURVEYOR CERTIFICATION	
I hereby certify that the well location shown on this plat was plotted from field notes of actual surveys made by me or under my supervision, and that the same is true and correct to the best of my knowledge and belief.	
Date Surveyed October 22, 1996	
Signature & Seal of Professional Surveyor <i>John S. Piper</i>	
Certificate No. 7254 John S. Piper	
Sheet 8 of 8	

○ = Staked Location ● = Producing Well = Injection Well ◇ = Water Supply Well ◆ = Plugged & Abandon Well
⊙ = Found Section Corner, 2 or 3" Iron Pipe & GLO B.C. ○ = Found 1/4 Section Corner, 1" Iron Pipe & GLO B.C.

ADDITIONAL INFORMATION ON THE LOCATION

State Plane Coordinates			
Northing 374251.841 (SHL) 375567.824 (BHL)		Easting 911575.392 (SHL) 911121.706 (BHL)	
Latitude 32°01'23.777" (SHL) 32°01'36.848" (BHL)		Longitude 103°08'19.348" (SHL) 103°08'24.449" (BHL)	
Zone	North American Datum	Combined Grid Factor	Coordinate File
East	1983	0.9999245	Rhodes.CR5
Drawing File		Field Book	
RH23Fed1.dwg		Lea County 15, Pg. 74	

State of New Mexico
Oil Conservation Division
PO Box 9028
Santa Fe NM 87504-2028

WELL LOCATION AND ACADEMATIC PLAT

Well Name		Rhodes 23, Indian Creek	
Operator		TEXACO EXPLORATION & PRODUCTION INC.	
Well No.		23	
Section		23	
Twp		23	
Range		37-3	
Elev		880'	
Bottom Hole Location		Bottom Hole Location	
Elev		880'	
Elev		880'	
Elev		880'	

NO ALLOWABLE WILL BE ASSIGNED TO THIS COMPLETION UNTIL ALL INTERESTS HAVE BEEN CONSOLIDATED
ON A NON-STANDARD UNIT HAS BEEN APPROVED BY THE DIVISION

Operator's Certification		I hereby certify that the information furnished herein is true and correct to the best of my knowledge and belief.	
Signature		<i>C. Wade Howard</i>	
Name		C. Wade Howard	
Engineer's Signature			
Company		Texaco Exploration & Production Inc.	
Date		October 24, 1996	
Supervisor's Certification		I hereby certify that the information furnished herein is true and correct to the best of my knowledge and belief.	
Signature		<i>John S. Piper</i>	
Name		John S. Piper	
Date		October 24, 1996	

BEFORE THE
OIL CONSERVATION DIVISION
Santa Fe, New Mexico

Case No. 11656 Exhibit No. 12

Submitted by: Texaco Exploration and Production Inc.

Hearing Date: December 19, 1996