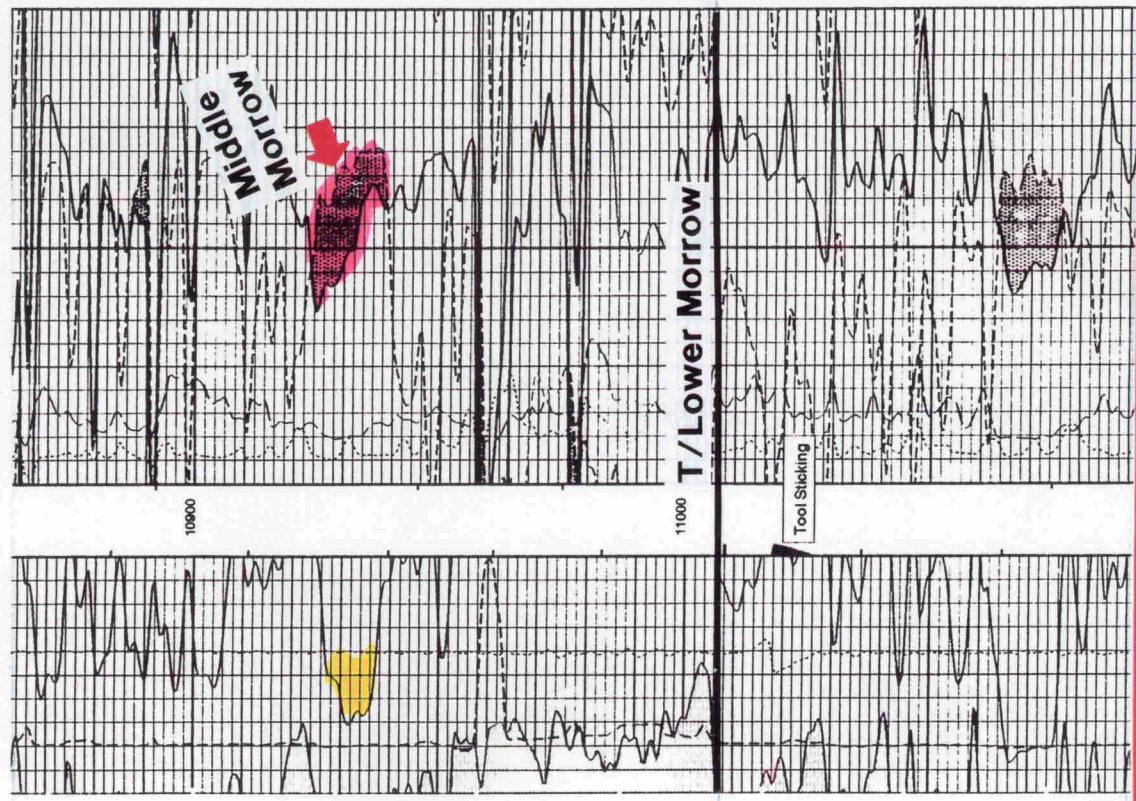
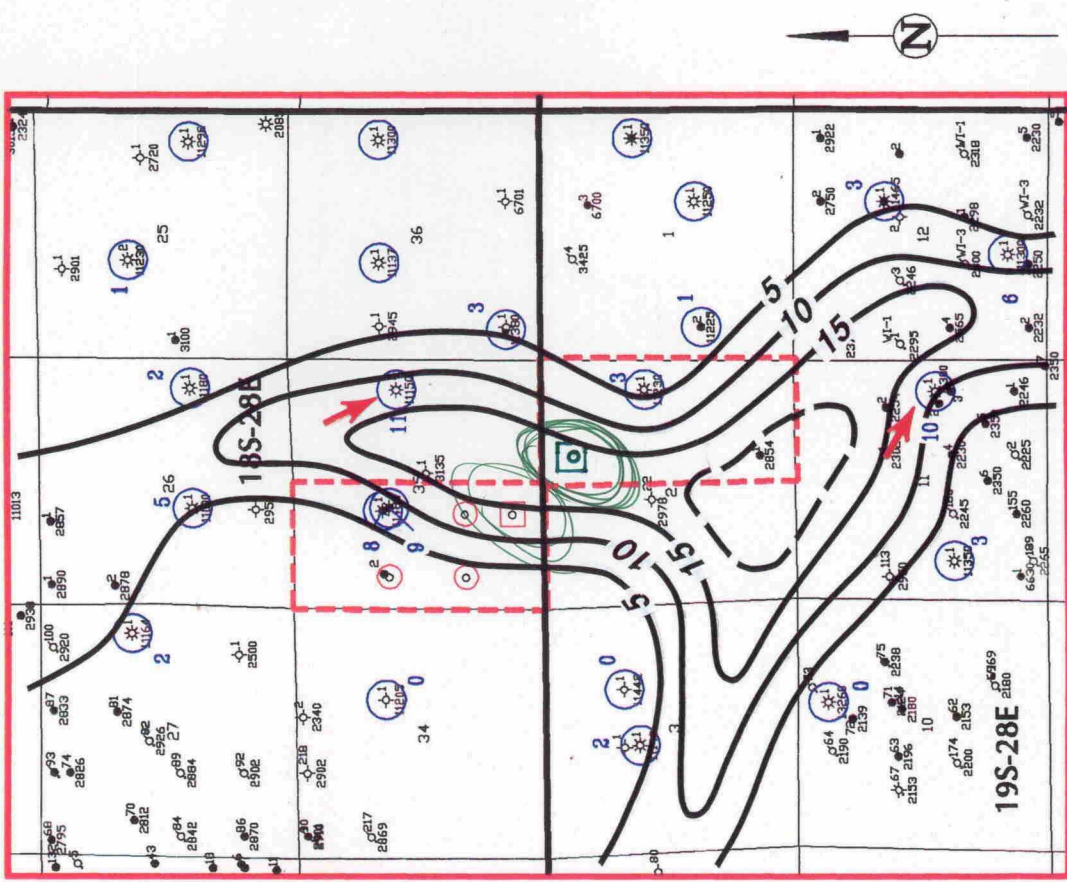
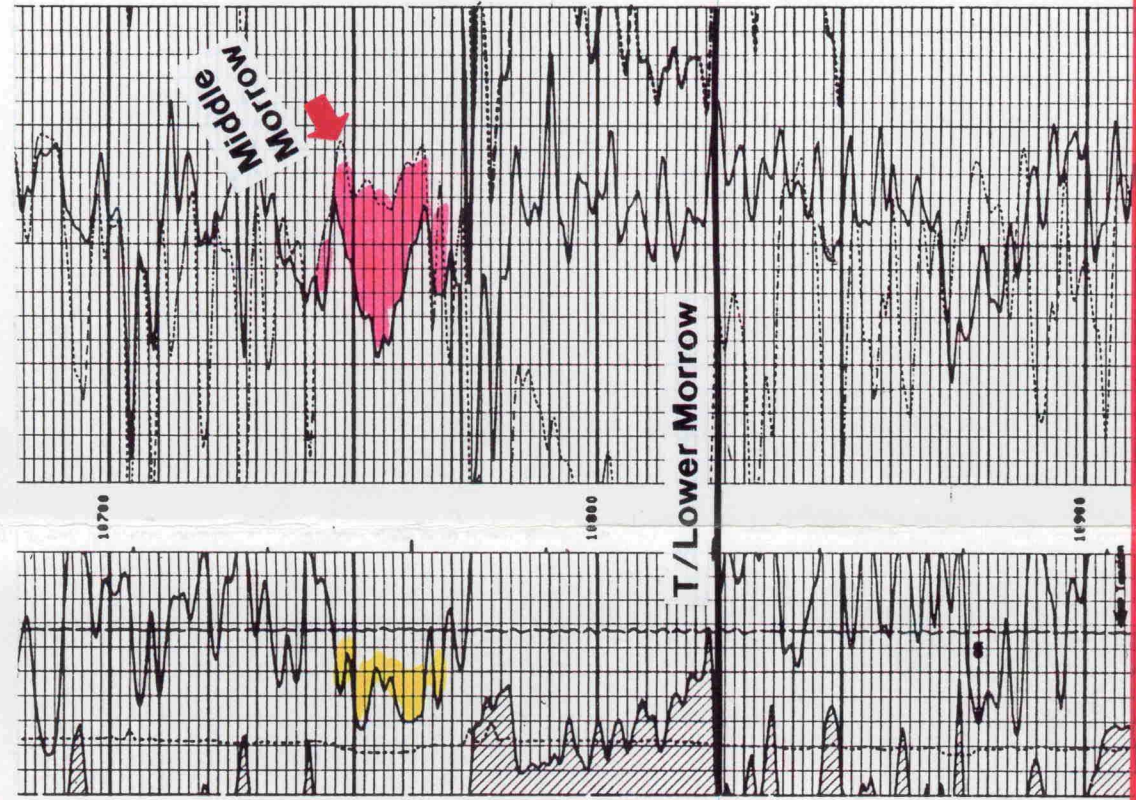


SE/4 Section 11, T 19 S - R 28 E



E/2 Section 35, T 18 S - R 28 E



LEGEND

- Orthodox Locations
- Proposed Unorthodox Location

Bass Enterprises Production Co.

PALMILLO PROSPECT
 Eddy County, New Mexico

Isopach Map
MIDDLE MORROW RESERVOIR
 Net Clean Sand ($\leq 10\%$ clay)

C.I. = 5'

| | | | |
|-------|---------|------------|------------|
| DATE | 2-14-97 | SCALE | 1" = 4000' |
| DEPT. | Geology | DRAWN BY | G.H. |
| | | PRINTED BY | P.O. |