

NMOCD Case Nos. 11897 & 11899
 January 8, 1998
 Dugan Production Corp.

Exhibit No. 13

Average Production - Wells Offsetting
 Dugan's Proposed Mona Lisa No. 2

T-26N R-7W Unit & Sec.	Operator & Well	Prod. Plot Page #	Blanco Mesaverde					Initial Prod. Rate MCF/MO
			MCFD & BC/D		Average	Cum. 4-1-97 MMCF + bbl		
			2/97	3/97				
B-14	Caulkins - Breech B #220R	2	113 + 0.4	110 + 0.4	112 + 0.4	428.5 + 3,836	7,500	
E-14	Caulkins - Breech B #220M	3	122 + 1	103 + 0.7	113 + 0.9	295.7 + 3,348	4,200	
A-13	Caulkins - Breech #224	4	78 + 0.7	76 + 0.7	77 + 0.7	1,803.4 + 12,575	33,000*	
D-13	Caulkins - Breech #224A	5	120 + 1.0	111 + 1.0	116 + 1.0	639.4 + 7,519	8,500	
M-13	Caulkins - Breech #307	6	17 + 0.2	18 + 0.3	18 + 0.2	223.3 + 2,211	3,000*	
O-13	Caulkins - Breech #307M	7	58 + 0.8	50 + 0.6	54 + 0.7	243.9 + 4,075	5,000	
H-24	Caulkins - Breech #854	8	0.5 + 0.1	0.5 + 0.1	0.5 + 0.1	4.0 + 841	38	
M-23	Caulkins - Breech #377	--	WOCT	WOCT	WOCT	0 + 0	--	
G-22	Chateau - NCRA #1E	9	25 + 0.4	25 + 0.4	25 + 0.4	150.7 + 3,409	2,600	
M-15	Chateau - Candado #1	10	SI	SI	SI	48.0 + 52	?*	
J-15	Chateau - Candado #1E	11	SI	SI	SI	80.3 + 1,419	2,400	
	10 Well Total				516 + 4.4	3,917.2 + 39,285	33,000	
	7 Well Average				74 + 0.6	540.7 + 5,282	4,750	

B-14 E-14 A-13 D-13 M-13 O-13 H-24 M-23 D-22 G-22 M-15 J-15	Operator & Well	Prod. Plot Page #	Basin Dakota					Initial Prod. Rate MCF/MO
			MCFD & BC/D		Average	Cum. 4-1-97 MMCF & bbl		
			2/97	3/97				
B-14	Caulkins - Breech B #220R	12	101 + 0.8	99 + 0.9	100 + 0.9	529.4 + 7,434	4,400	
E-14	Caulkins - Breech #220M	13	131 + 1.2	111 + 0.8	121 + 1.0	327.2 + 3,810	5,000	
A-13	Caulkins - Breech #224	--	--	--	--	0 + 0	--	
D-13	Caulkins - Breech #224A	14	64 + 0.6	54 + 0.3	59 + 0.5	339.1 + 3,227	9,300	
M-13	Caulkins - Breech #307	15	94 + 0.6	99 + 0.8	97 + 0.7	1,237.4 + 9,957	18,000	
O-13	Caulkins - Breech #307M	16	189 + 0.8	163 + 0.6	176 + 0.7	733 + 4,083	14,000	
H-24	Caulkins - Breech #854	17	62 + 0.8	53 + 0.6	58 + 0.7	209.6 + 4,394	5,300	
M-23	Caulkins - Breech #377	--	WOCT	WOCT	WOCT	0 + 0	--	
D-22	Chateau - NCRA #1	18	140 + 1.3	134 + 1.2	137 + 1.3	2,161.9 + 24,012	27,000	
G-22	Chateau - NCRA #1E	19	270 + 1.3	268 + 1.4	269 + 1.4	1,850.5 + 11,590	17,500	
M-15	Chateau - Candado #1	20	31 + 0.6	21 + 0.8	26 + 0.7	645.9 + 19,647	7,600	
J-15	Chateau - Candado #1E	21	138 + 0.7	135 + 0.9	137 + 0.8	603.5 + 4,601	9,000	
	10 Well Total				1,180 + 8.7	8,637.5 + 92,755	117,100	
	10 Well Average				118 + 0.9	863.8 + 9,276	11,710	

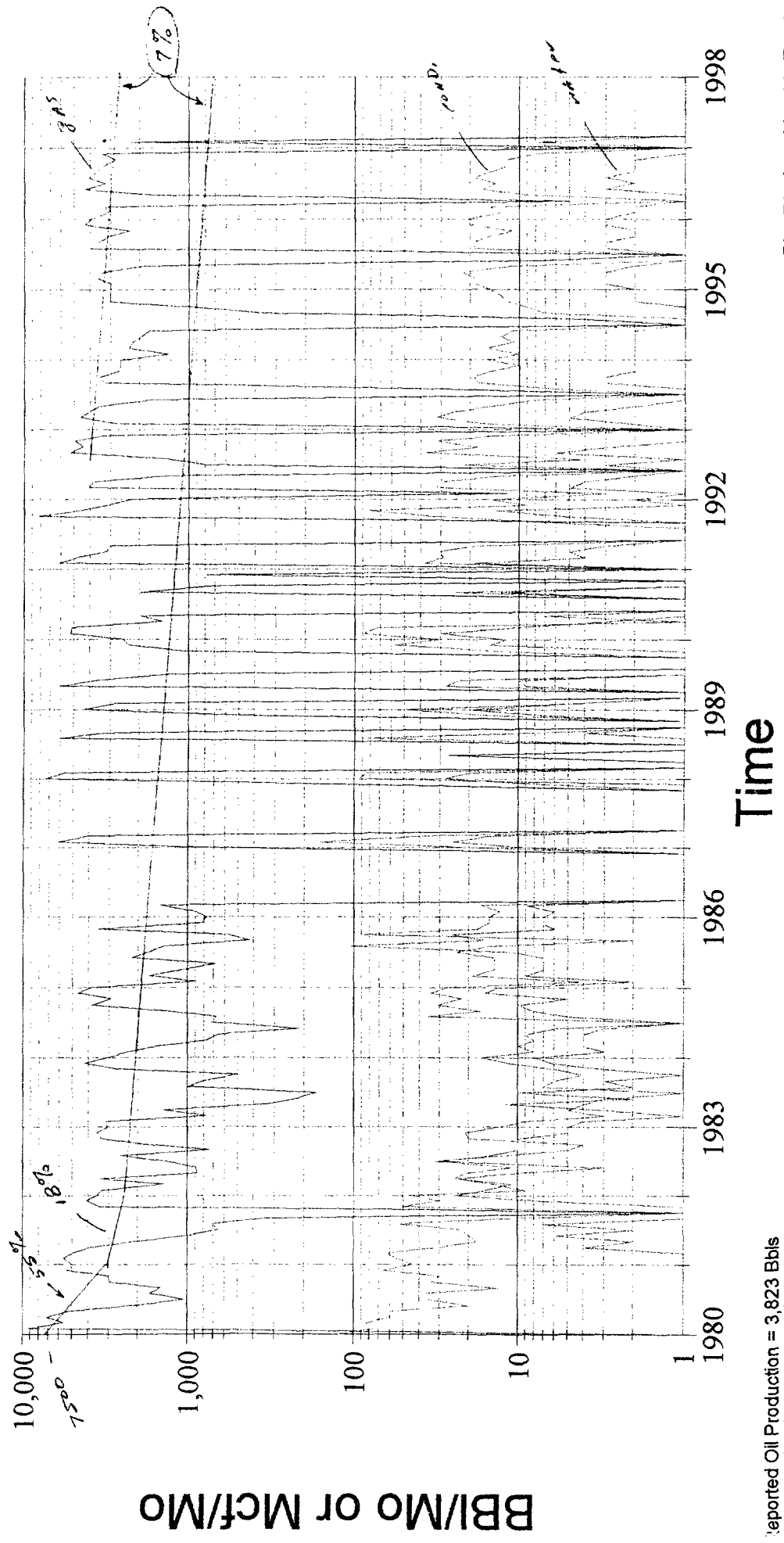
Average MV & Dakota			192 + 1.5	1,404.5 + 14,558	16,460
Average % Mesa Verde - Gas % & Oil %			39% + 40%	39% + 36%	29% + --
Average % Dakota - Gas % & Oil %			61% + 60%	61% + 64%	71% + --

*1st production occurred prior to start of production graph and is estimated assuming average trends.

Oil
 Gas
 Water
 Wells

Field: BLANCO *Mesa Verde*
 Lease: BREECH B | Well #220R (B-14-2614-7W)
 Operator: CAULKINS OIL COMPANY
 Production Rate vs Time
 For the Period 01/1980 to 12/1997 | API: 30039219980000

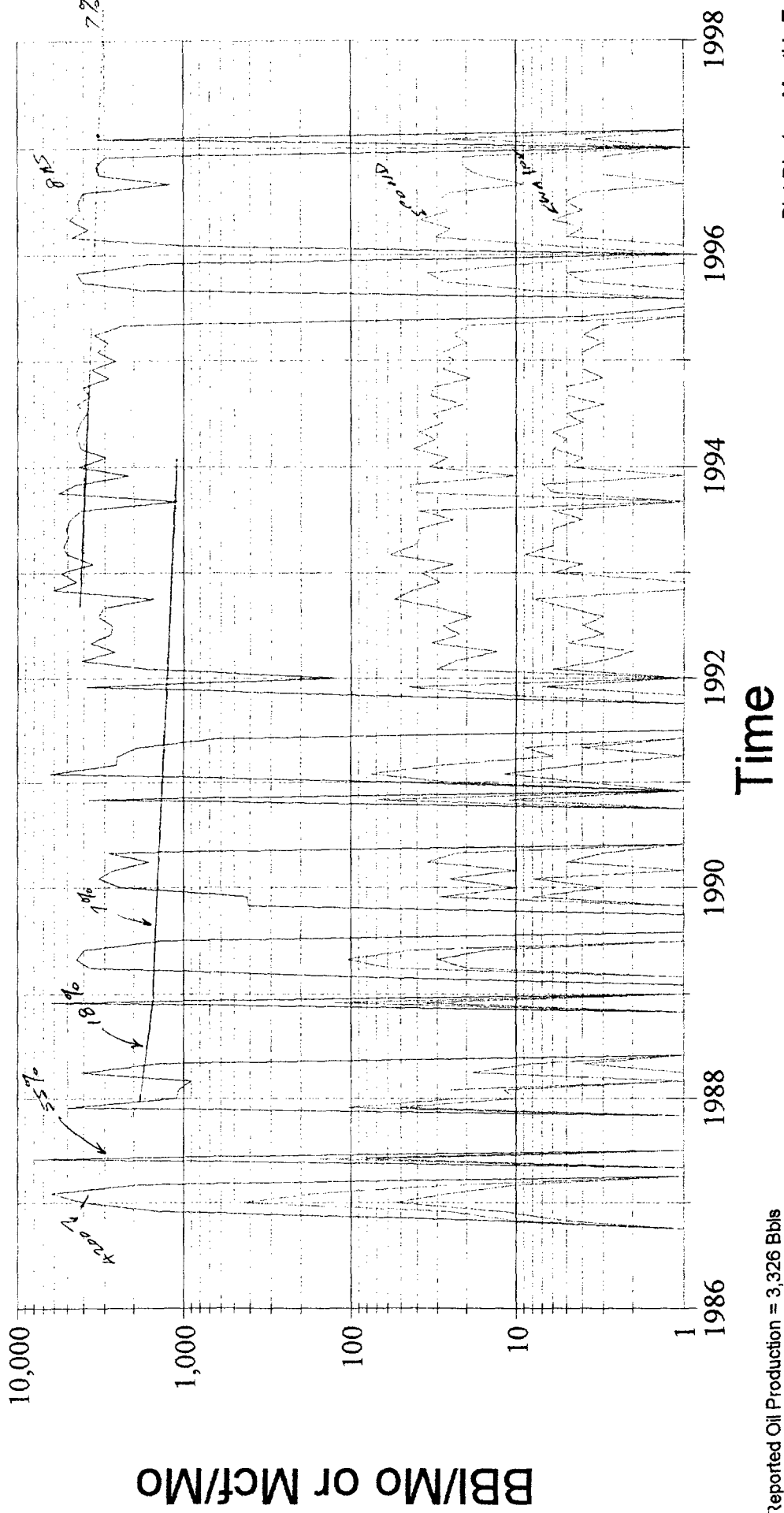
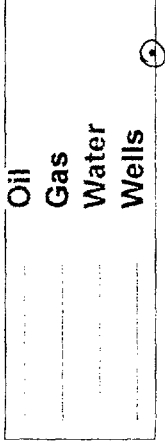
(1/80)



Reported Oil Production = 3,823 Bbls
 Reported Gas Production = 425,177 Mcf
 Reported Water Production = 981 Bbls

11/92

Field: BLANCO *Mesquite*
 Lease: BREECH B | Well #220M (E-14-26N-7W)
 Operator: CAULKINS OIL COMPANY
 Production Rate vs Time
 For the Period 01/1986 to 12/1997 | API: 30039236760000

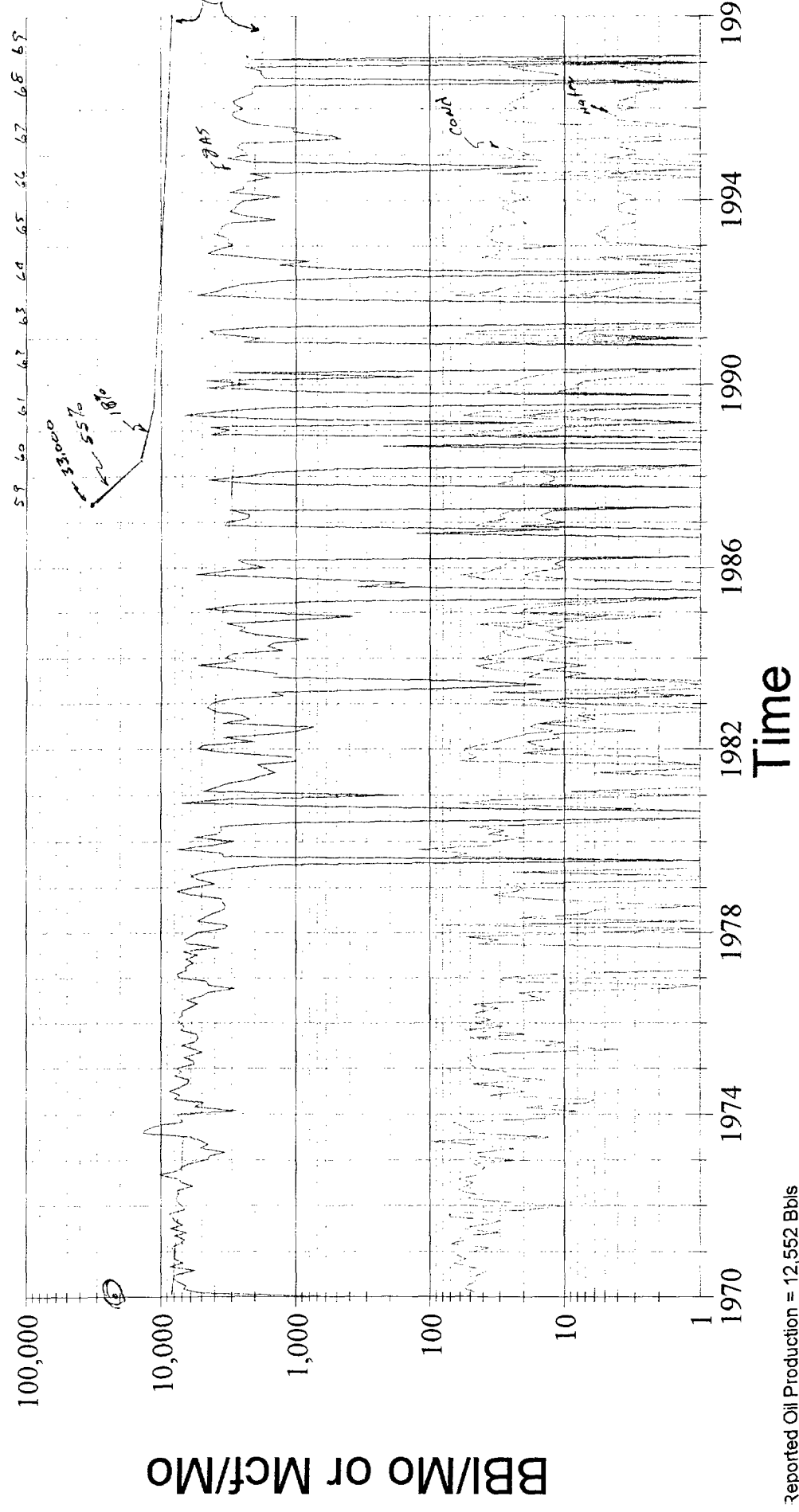


Reported Oil Production = 3,326 Bbls
 Reported Gas Production = 292,556 Mcf
 Reported Water Production = 680 Bbls

6/59

Oil
 Gas
 Water
 Wells

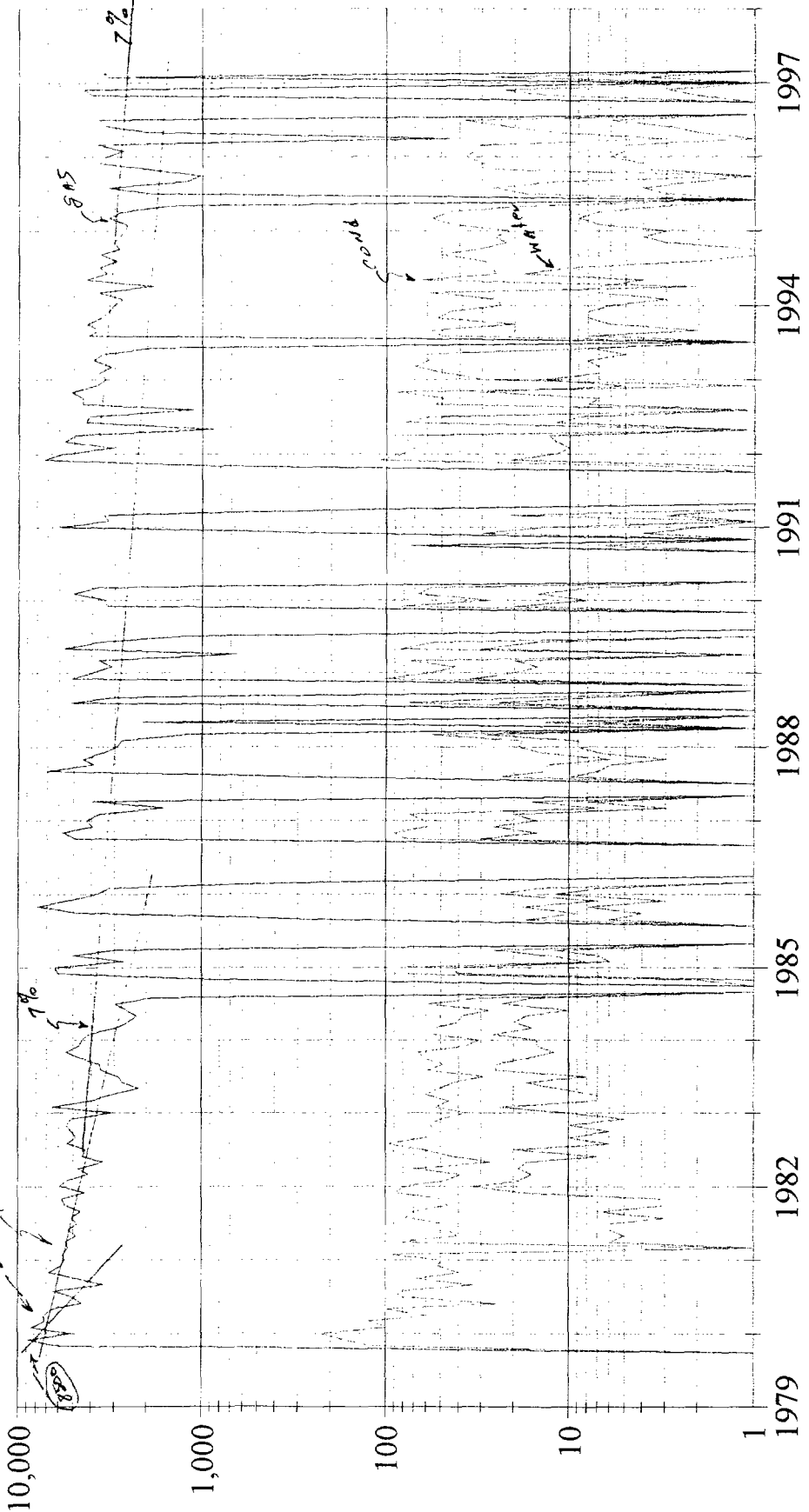
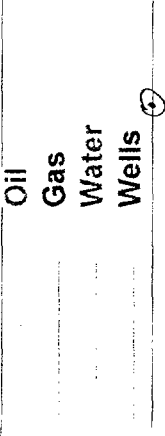
Field: BLANCO *Mrs. ...*
 Lease: BREECH | Well #224 (A-13-26 N-7 W)
 Operator: CAULKINS OIL COMPANY
 Production Rate vs Time
 For the Period 01/1970 to 12/1997 | API: 30039065080000



Reported Oil Production = 12,552 Bbls
 Reported Gas Production = 1,801,024 Mcf
 Reported Water Production = 953 Bbls

11/79

Field: BLANCO *Mr. S. L. ...*
 Lease: BREECH | Well #224A (*D-13 - 2LN-7W*)
 Operator: CAULKINS OIL COMPANY
 Production Rate vs Time
 For the Period 01/1979 to 12/1997 | API: 30039219970000



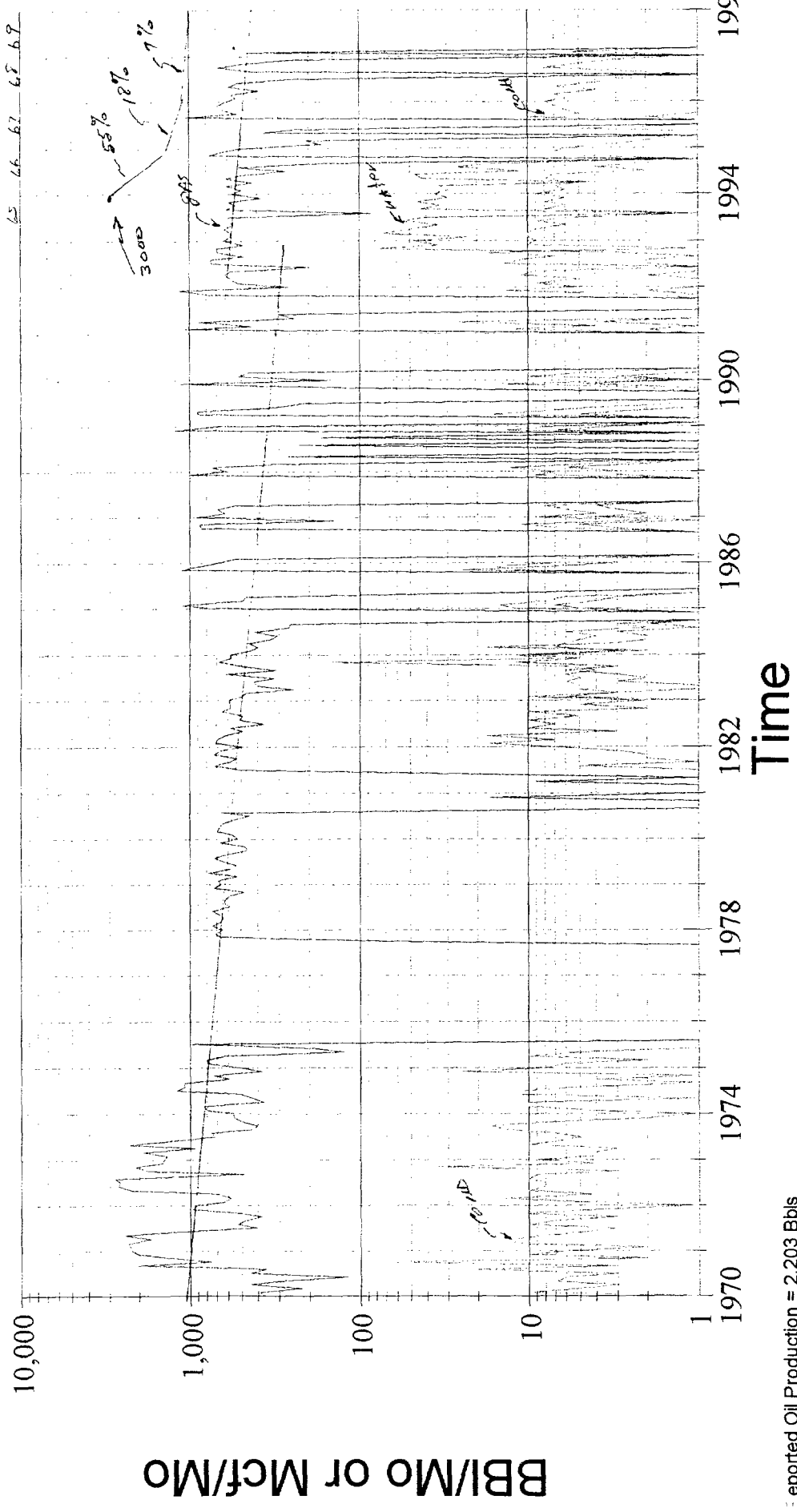
Time

Reported Oil Production = 7,487 Bbls
 Reported Gas Production = 635,953 Mcf
 Reported Water Production = 1,497 Bbls

11/65

Field: BLANCO *M-S + circle*
 Lease: BREECH | Well #307 (M-13-26 N-7 W)
 Operator: CAULKINS OIL COMPANY
 Production Rate vs Time
 For the Period 01/1970 to 12/1997 | API: 30039081570000

Oil
 Gas
 Water
 Wells



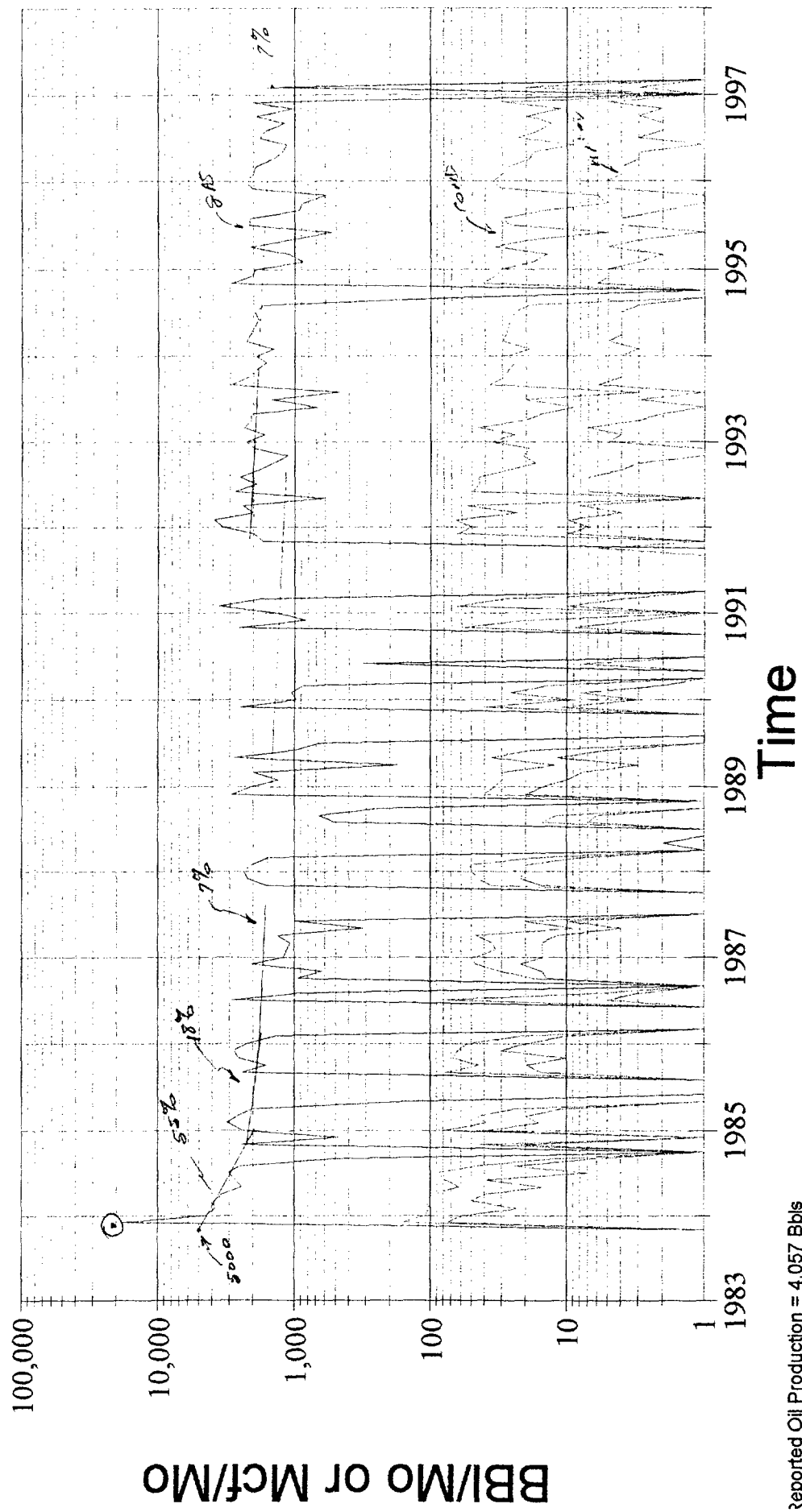
Reported Oil Production = 2,203 Bbls
 Reported Gas Production = 222,768 Mcf
 Reported Water Production = 1,206 Bbls

Page 7

12/83

Field: BLANCO *Mesa Verde*
 Lease: BREECH | Well #307M (0-13-26N-7W)
 Operator: CAULKINS OIL COMPANY
 Production Rate vs Time
 For the Period 01/1983 to 12/1997 | API: 30039231430000

Oil
 Gas
 Water
 Wells



Reported Oil Production = 4,057 Bbls
 Reported Gas Production = 242,405 Mcf
 Reported Water Production = 1,142 Bbls

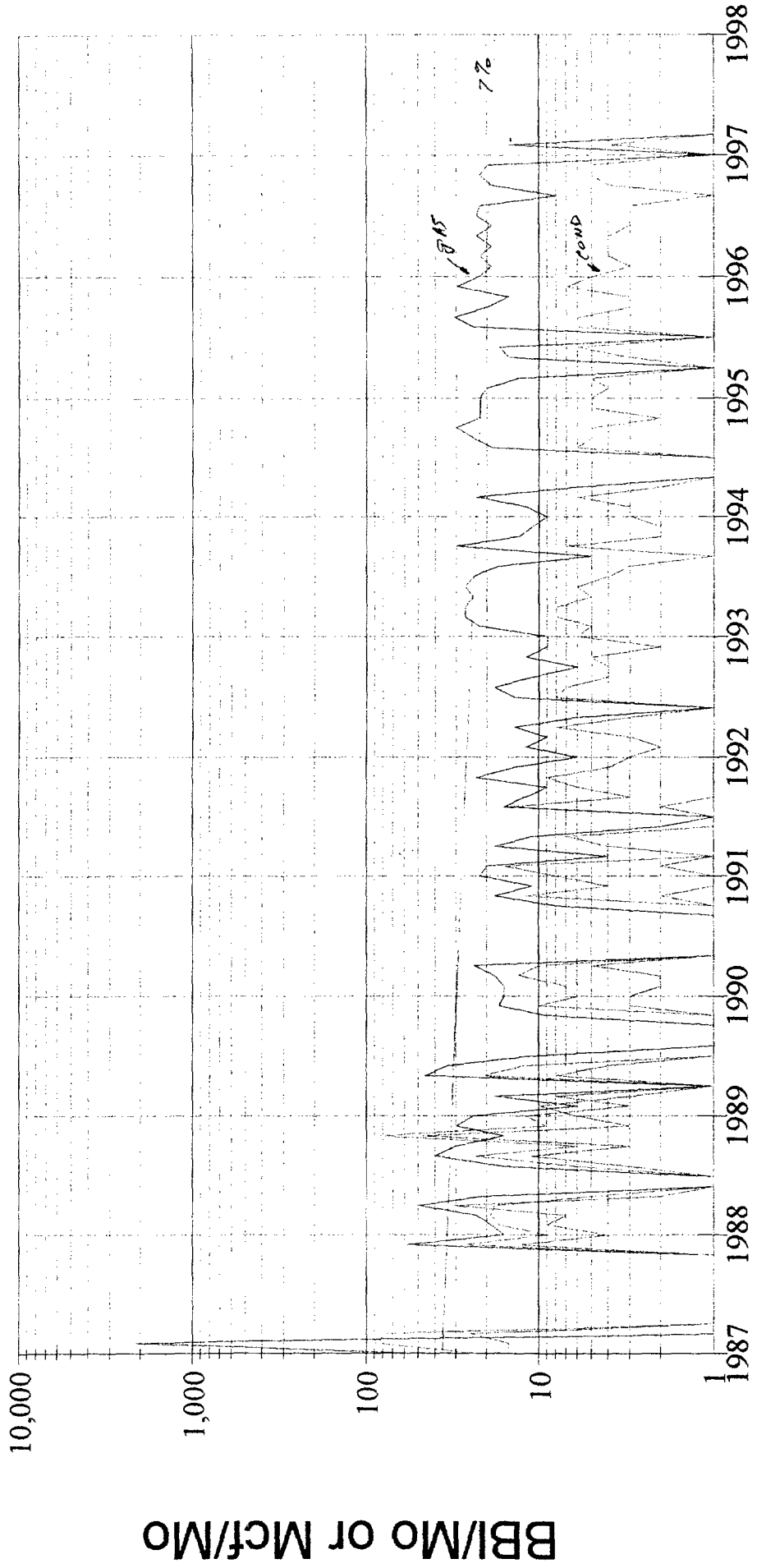
Plot Displays Monthly Totals
 Copyright (C) 1997 by Petroleum Information/Dwights LLC

187

187

Field: BLANCO *Mesquite*
 Lease: BREECH | Well #854 (H-29-26N-7W)
 Operator: CAULKINS OIL COMPANY
 Production Rate vs Time
 For the Period 01/1987 to 12/1997 | API: 30039234890000

Oil
 Gas
 Water
 Wells

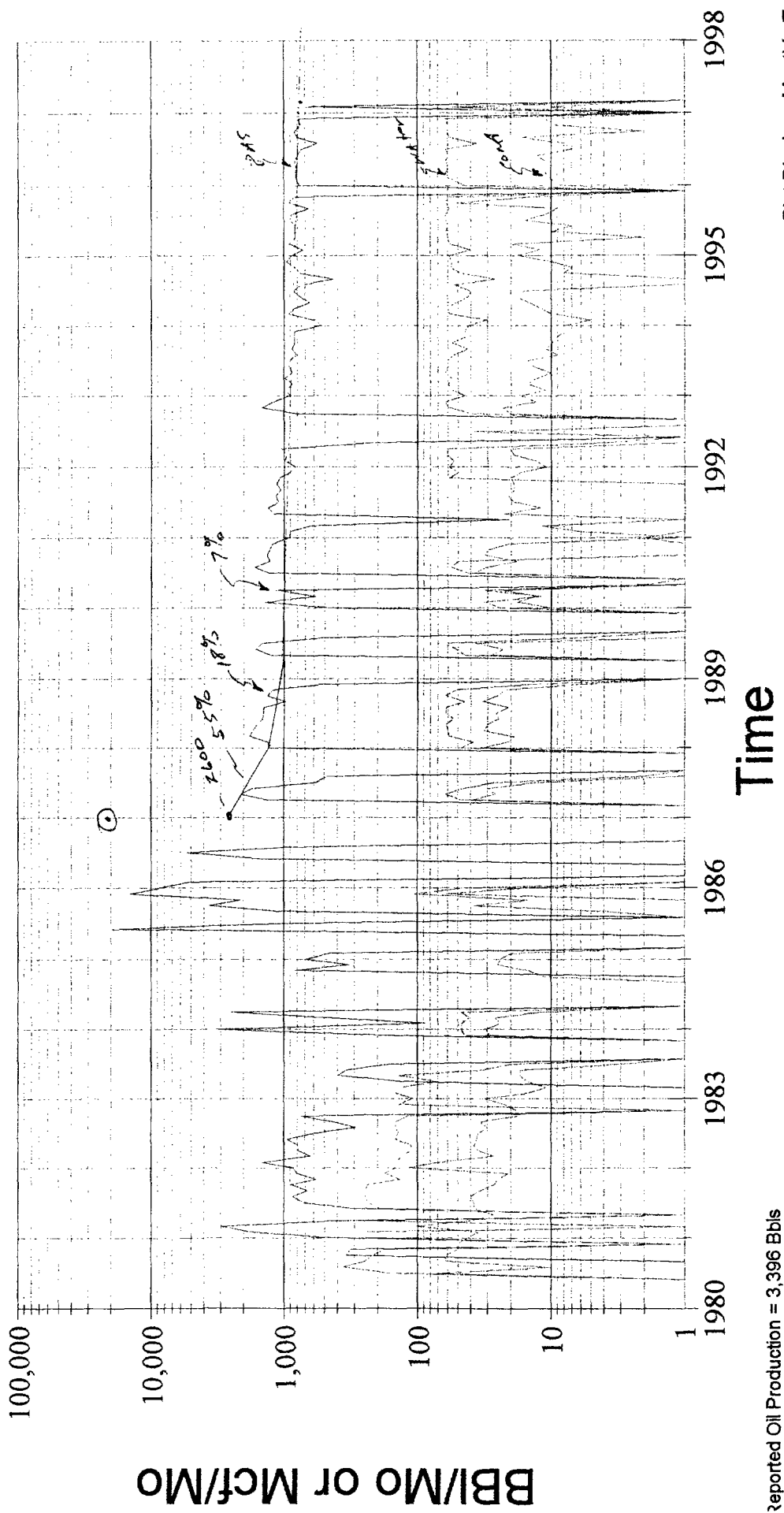


Time

Reported Oil Production = 838 Bbls
 Reported Gas Production = 3,921 Mcf
 Reported Water Production = 283 Bbls

Field: BLANCO *M-54 Verde*
 Lease: NCRA | Well #1E (G-22-ZGN-7W)
 Operator: CHATEAU OIL AND GAS INC
 Production Rate vs Time
 For the Period 01/1980 to 12/1997 | API: 30039221020000

Oil
 Gas
 Water
 Wells

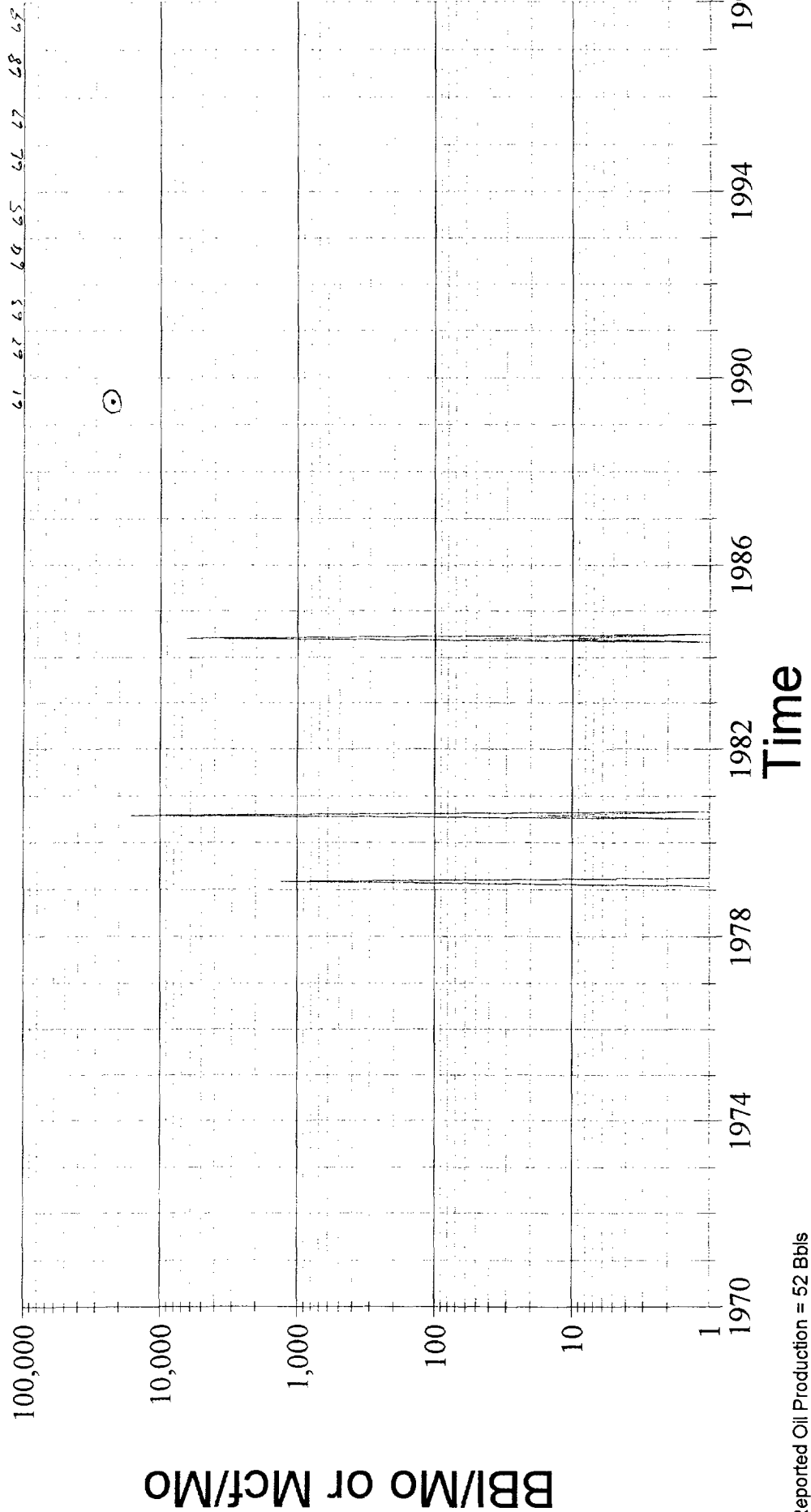


Reported Oil Production = 3,396 Bbls
 Reported Gas Production = 149,928 Mcf
 Reported Water Production = 10,079 Bbls

Oil
 Gas
 Water
 Wells

Field: BLANCO *Messoude*
 Lease: CANDADO | Well #1 (*M-15-26N-7W*)
 Operator: CHATEAU OIL AND GAS INC
 Production Rate vs Time
 For the Period 01/1970 to 12/1997 | API: 30039064450000

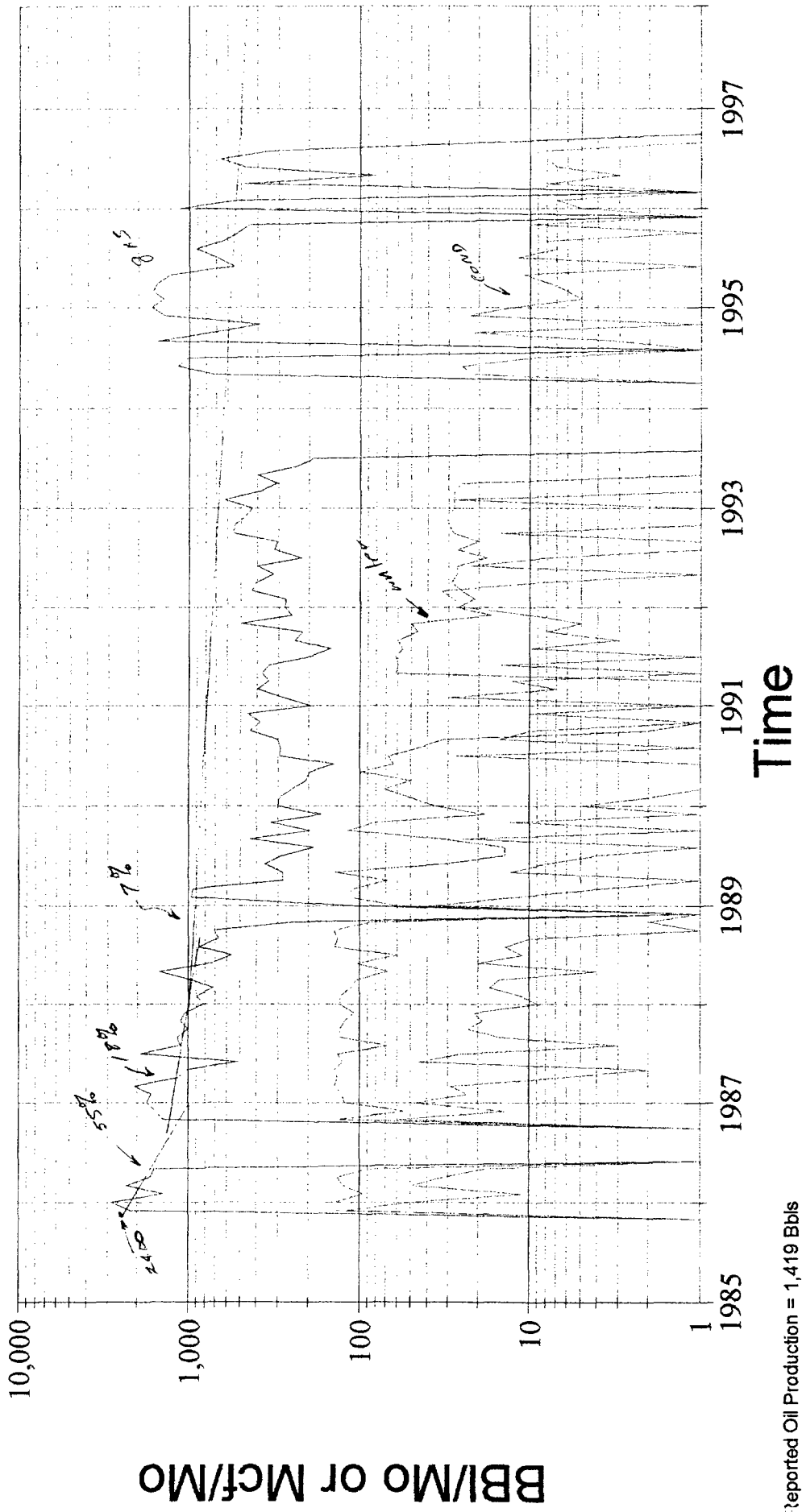
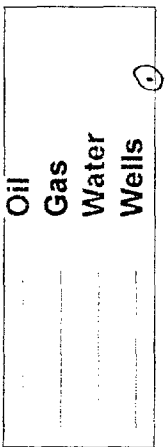
7/6/1



Reported Oil Production = 52 Bbls
 Reported Gas Production = 47,978 Mcf
 Reported Water Production = 28 Bbls

12/85

Field: BLANCO Mesa Verde
 Lease: CANDADO | Well #1E (J-15-22 N-7 W)
 Operator: CHATEAU OIL AND GAS INC
 Production Rate vs Time
 For the Period 01/1985 to 12/1997 | API: 30039234970000

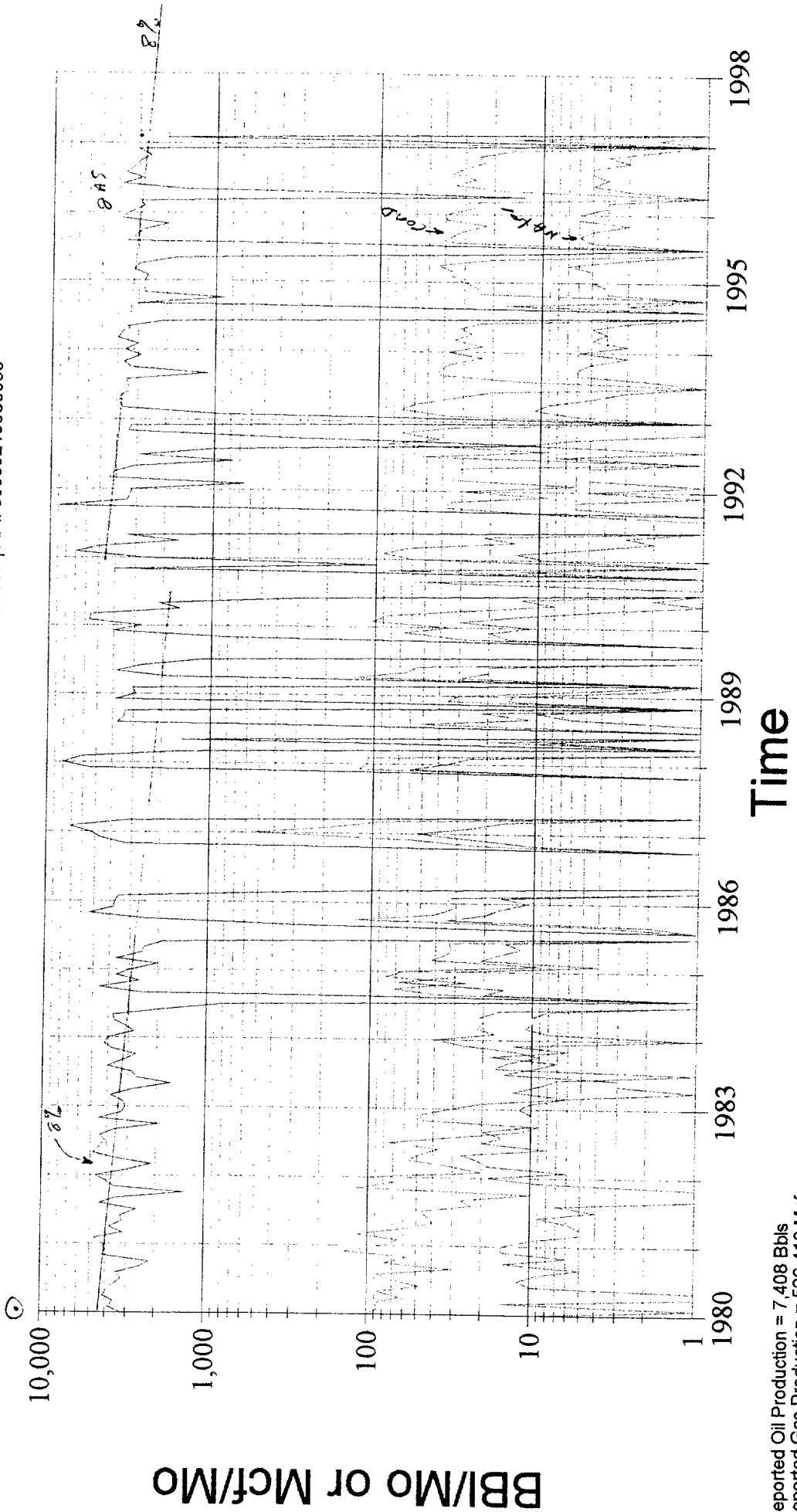


Reported Oil Production = 1,419 Bbls
 Reported Gas Production = 80,285 Mcf
 Reported Water Production = 5,760 Bbls

Oil
 Gas
 Water
 Wells

Field: BASIN Dakota
 Lease: BREECH B | Well #220R (B-14-ZLN-74)
 Operator: CAULKINS OIL COMPANY
 Production Rate vs Time
 For the Period 01/1980 to 12/1997 | API: 30039219980000

1/80

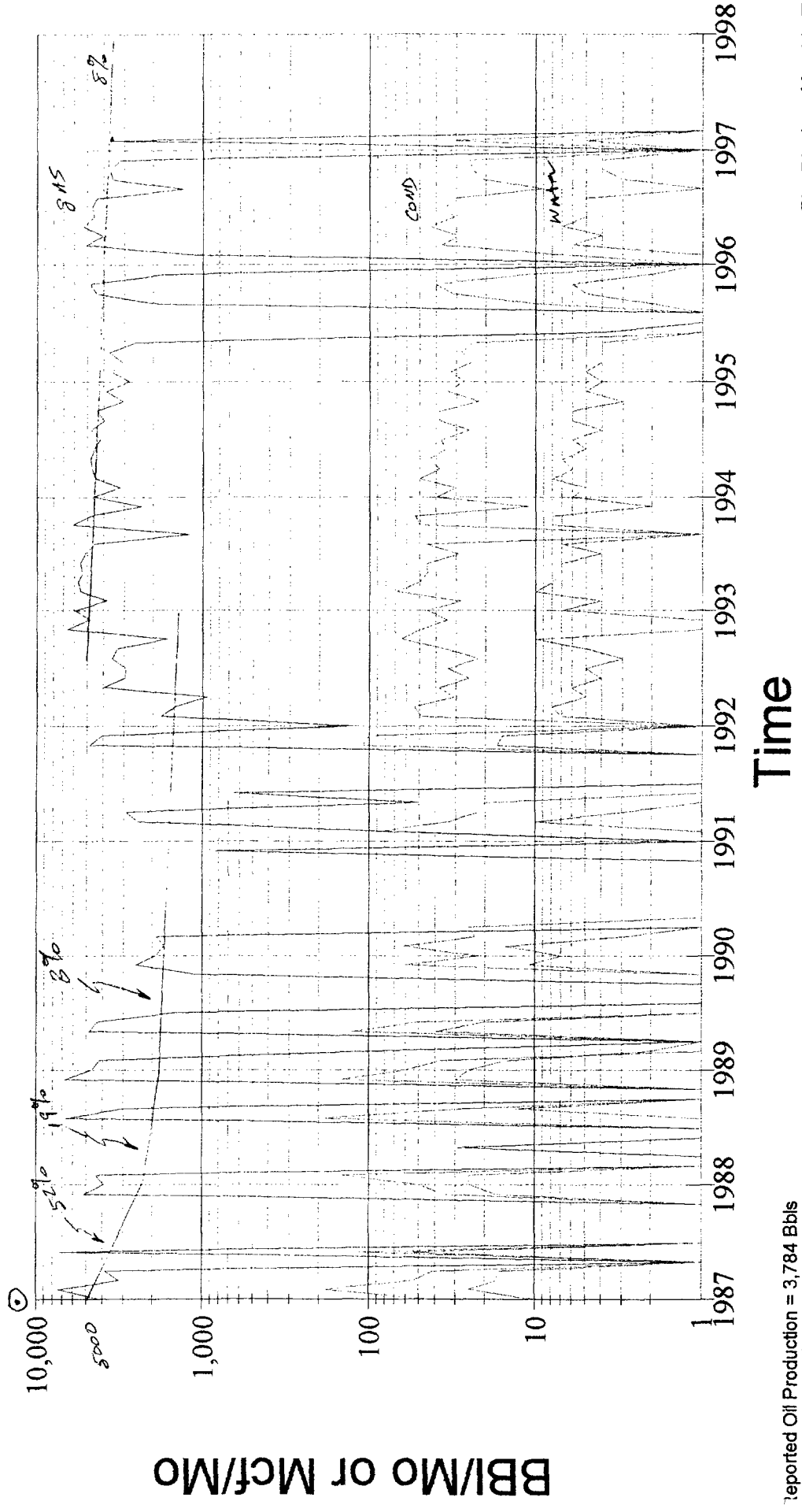


Reported Oil Production = 7,408 Bbls
 Reported Gas Production = 526,418 Mcf
 Reported Water Production = 1,623 Bbls

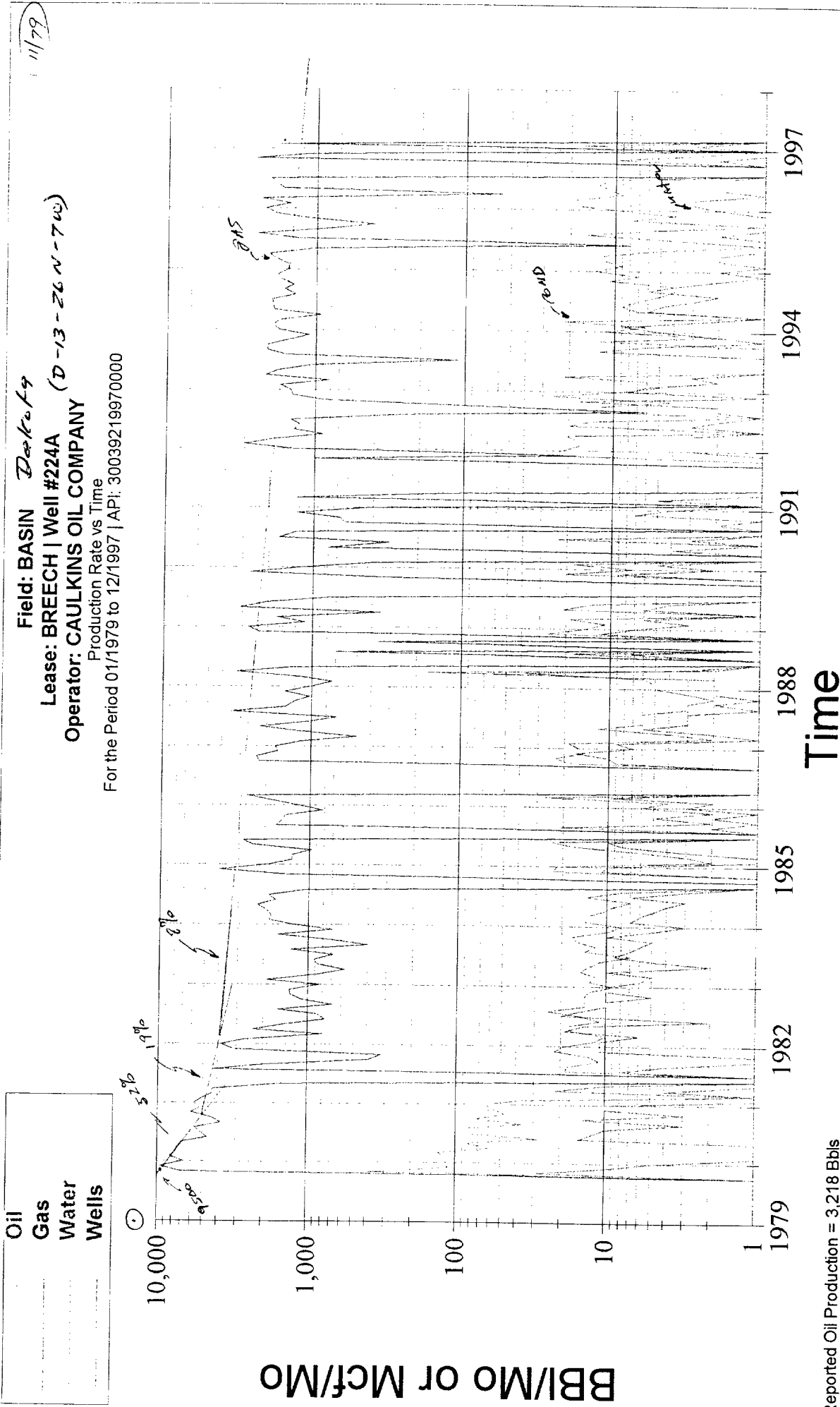
1187

Field: BASIN Dakota
 Lease: BREECH B | Well #220M (E-14-ZLN-7W)
 Operator: CAULKINS OIL COMPANY
 Production Rate vs Time
 For the Period 01/1987 to 12/1997 | API: 30039236760000

Oil
 Gas
 Water
 Wells



Reported Oil Production = 3,784 Bbls
 Reported Gas Production = 323,794 Mcf
 Reported Water Production = 701 Bbls



Field: BASIN *Deekofy*
 Lease: BREECH | Well #224A (D-13-26N-7W)
 Operator: CAULKINS OIL COMPANY
 Production Rate vs Time
 For the Period 01/1979 to 12/1997 | API: 30039219970000

Oil
 Gas
 Water
 Wells

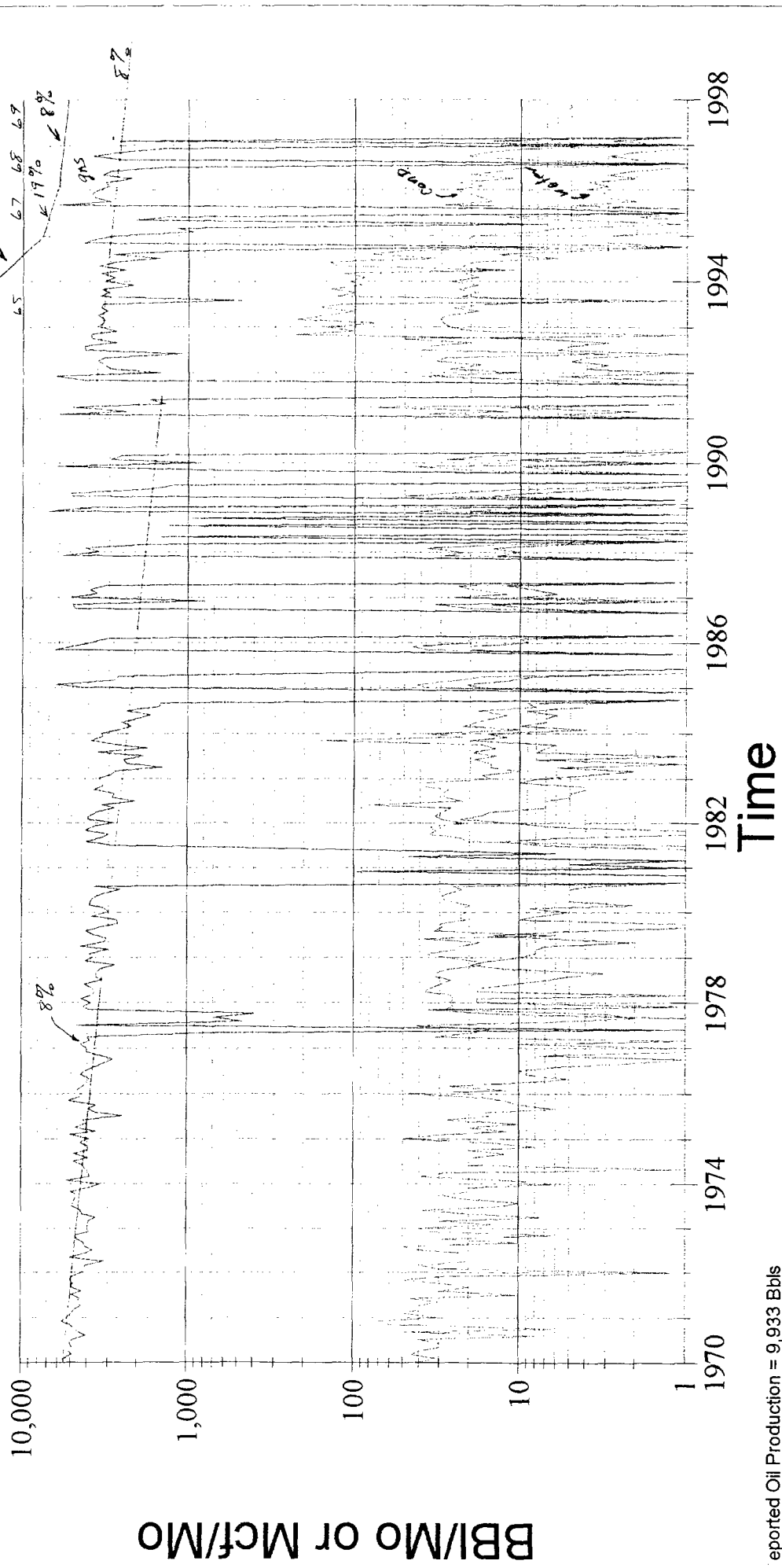
Reported Oil Production = 3,218 Bbls
 Reported Gas Production = 337,436 Mcf
 Reported Water Production = 950 Bbls

18415

11/25

Field: BASIN *Derrick 49*
 Lease: BREECH | Well #307 (*m-13-ZG N-7W*)
 Operator: CAULKINS OIL COMPANY
 Production Rate vs Time
 For the Period 01/1970 to 12/1997 | API: 30039081570000

Oil
 Gas
 Water
 Wells

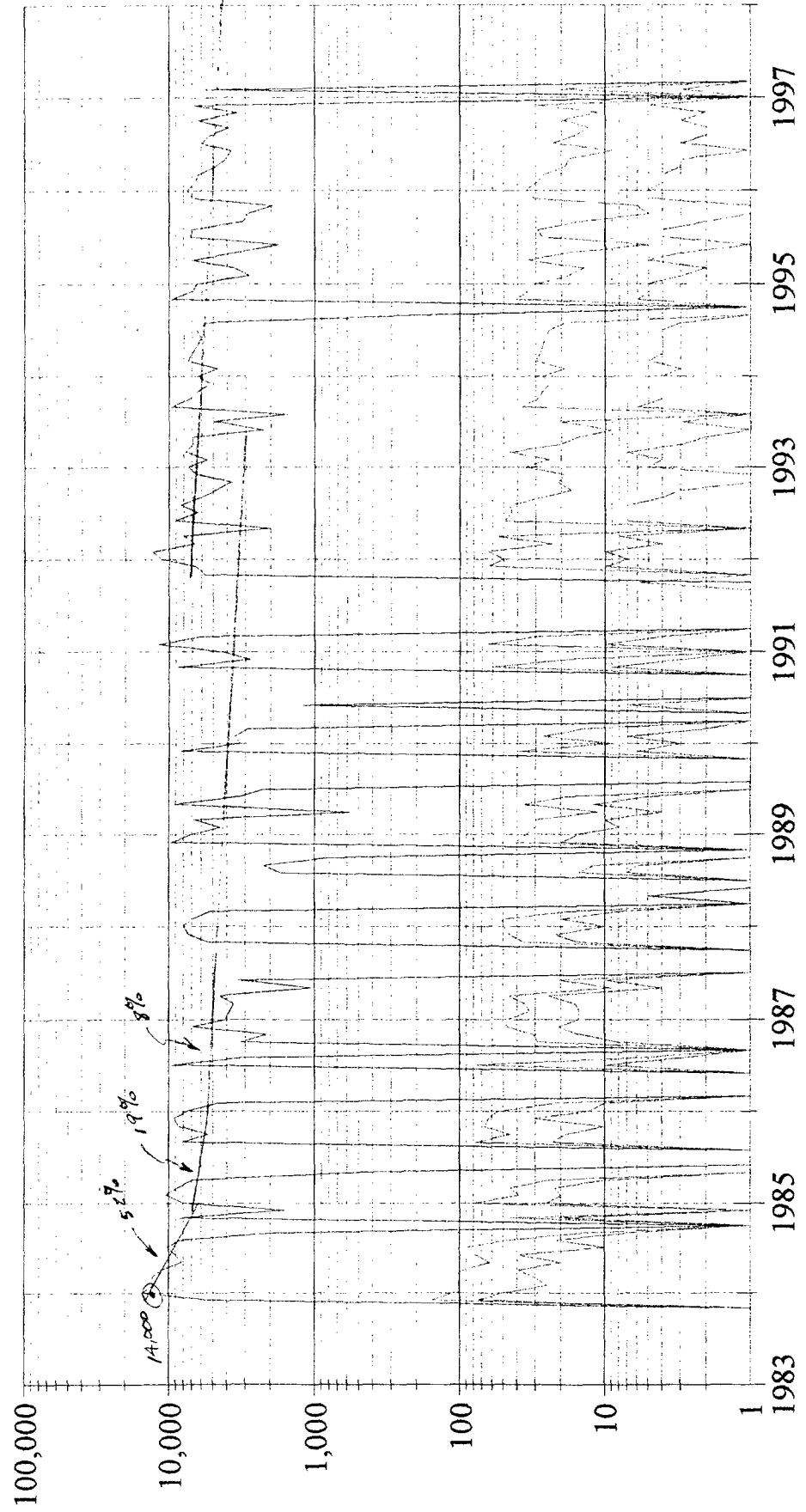


Reported Oil Production = 9,933 Bbls
 Reported Gas Production = 1,234,434 Mcf
 Reported Water Production = 3,575 Bbls

Oil
Gas
Water
Wells

Field: BASIN *Dakota*
Lease: BREECH | Well #307M (D-13-26N-7W)
Operator: CAULKINS OIL COMPANY
Production Rate vs Time
For the Period 01/1983 to 12/1997 | API: 30039231430000

12/93



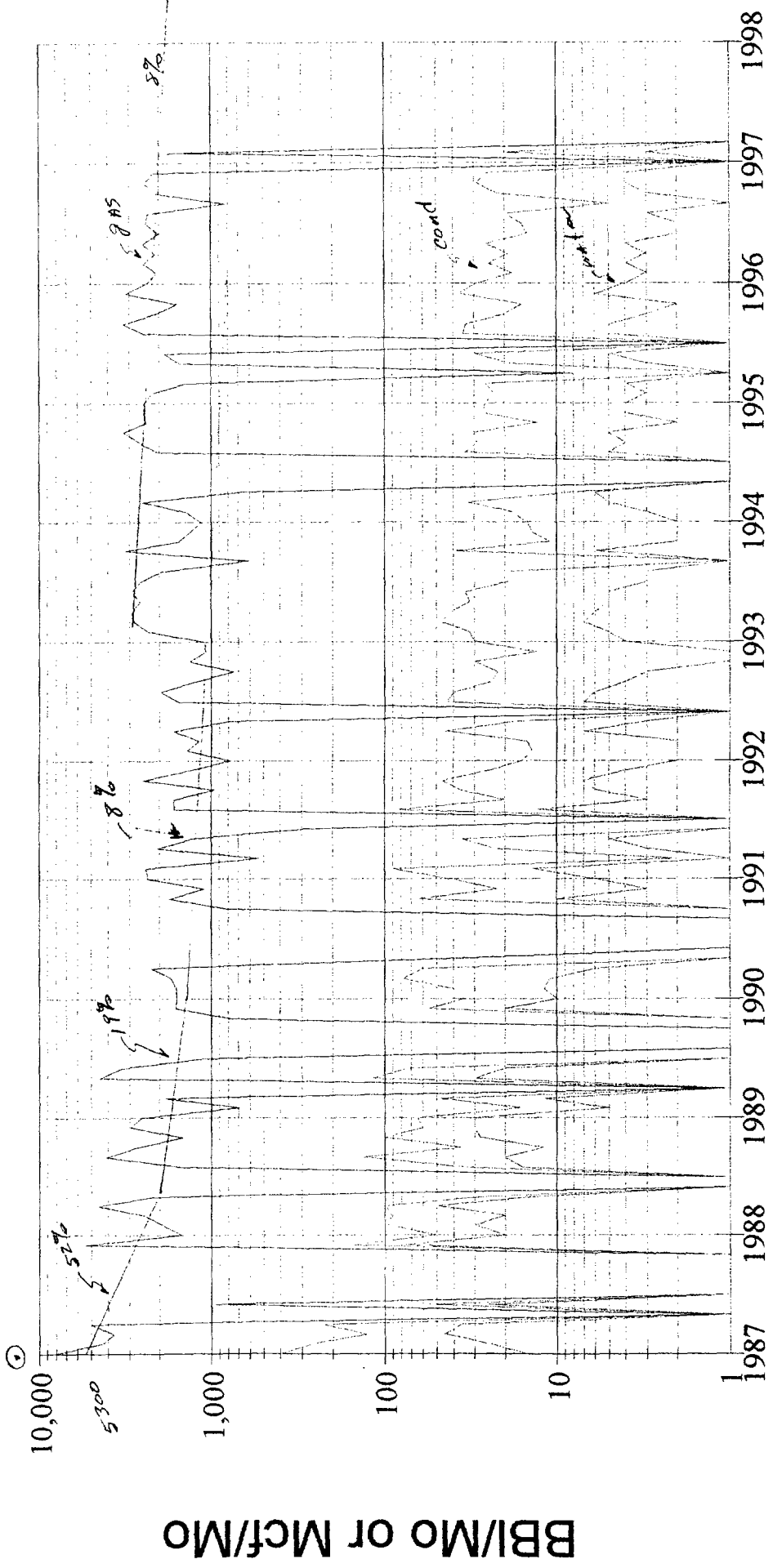
Time

Reported Oil Production = 4,065 Bbls
Reported Gas Production = 727,932 Mcf
Reported Water Production = 1,107 Bbls

11/87

Field: BASIN Dakota
 Lease: BREECH | Well #854 (H-24-26N-7W)
 Operator: CAULKINS OIL COMPANY
 Production Rate vs Time
 For the Period 01/1987 to 12/1997 | API: 30039234890000

Oil
Gas
Water
Wells



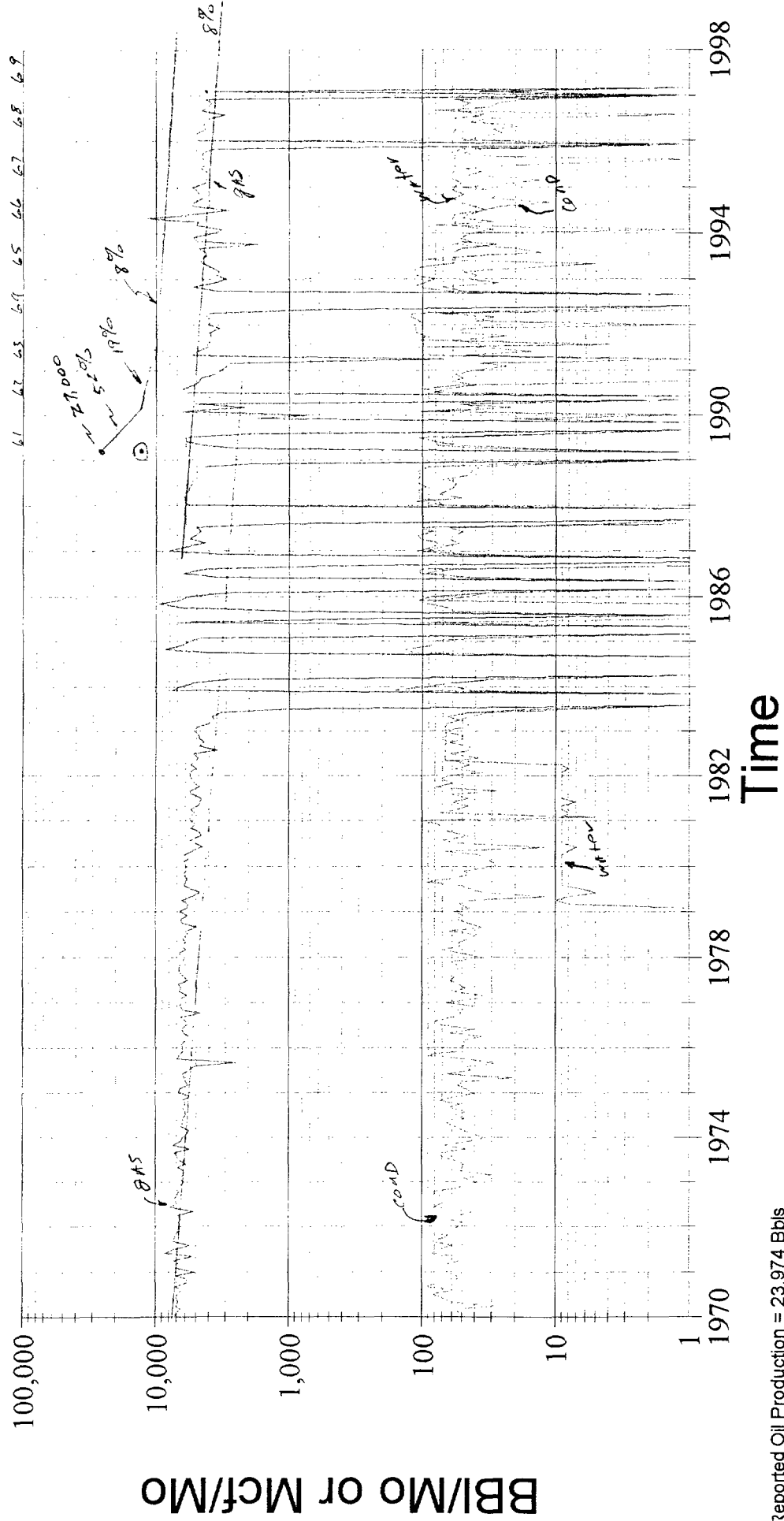
Time

Reported Oil Production = 4,377 Bbls
 Reported Gas Production = 208,134 Mcf
 Reported Water Production = 897 Bbls

Oil
 Gas
 Water
 Wells

Field: BASIN *Dorko*
 Lease: NCRA | Well #1 (*D-22 - 22 N - 7 W*)
 Operator: CHATEAU OIL AND GAS INC
 Production Rate vs Time
 For the Period 01/1970 to 12/1997 | API: 30039064070000

2/6/1

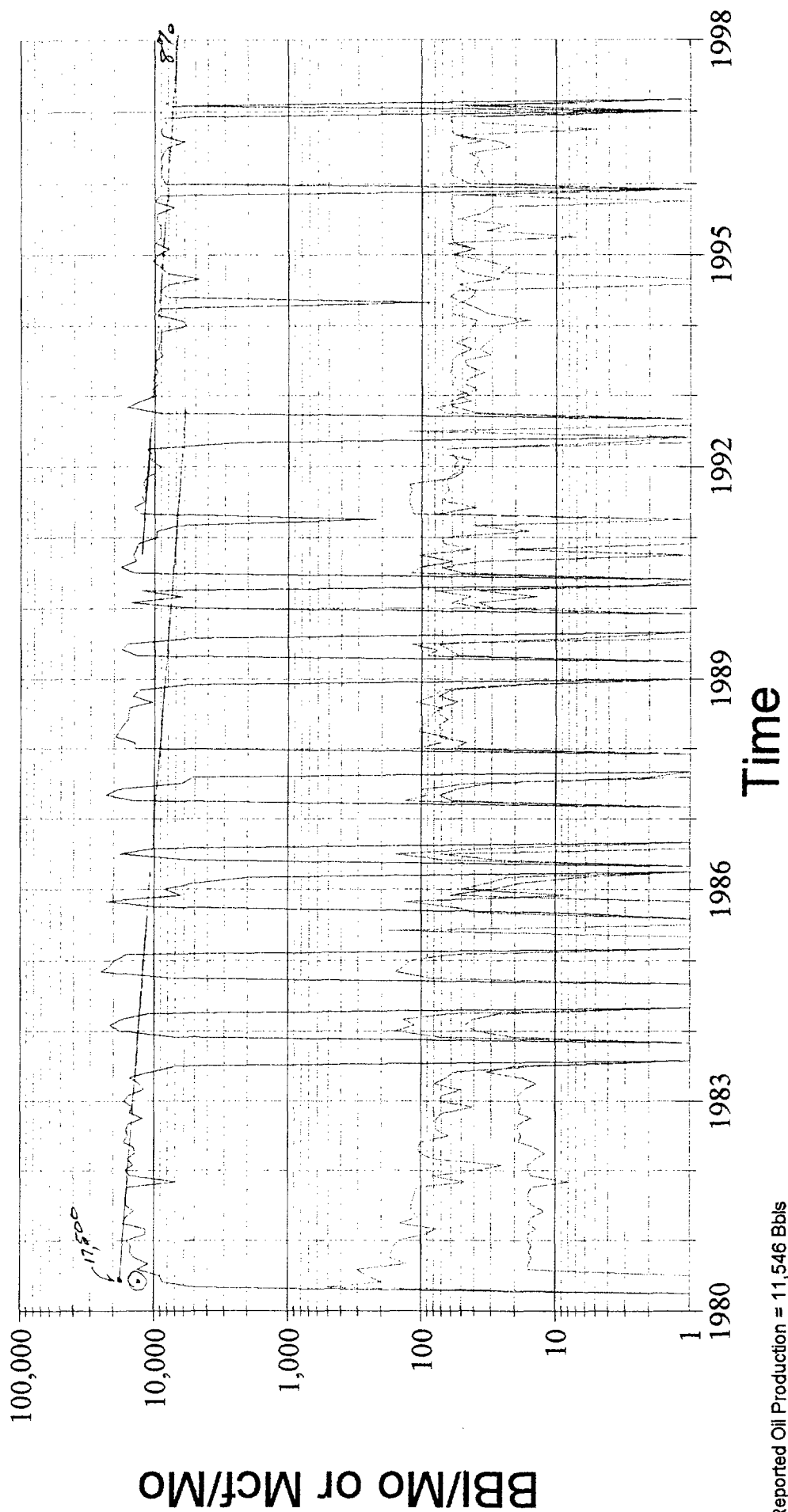


Reported Oil Production = 23,974 Bbls
 Reported Gas Production = 2,157,697 Mcf
 Reported Water Production = 8,708 Bbls

7/80

Field: BASIN *Dakota*
 Lease: NCRA | Well #1E (6-22-26N-7W)
 Operator: CHATEAU OIL AND GAS INC
 Production Rate vs Time
 For the Period 01/1980 to 12/1997 | API: 30039221020000

Oil
 Gas
 Water
 Wells

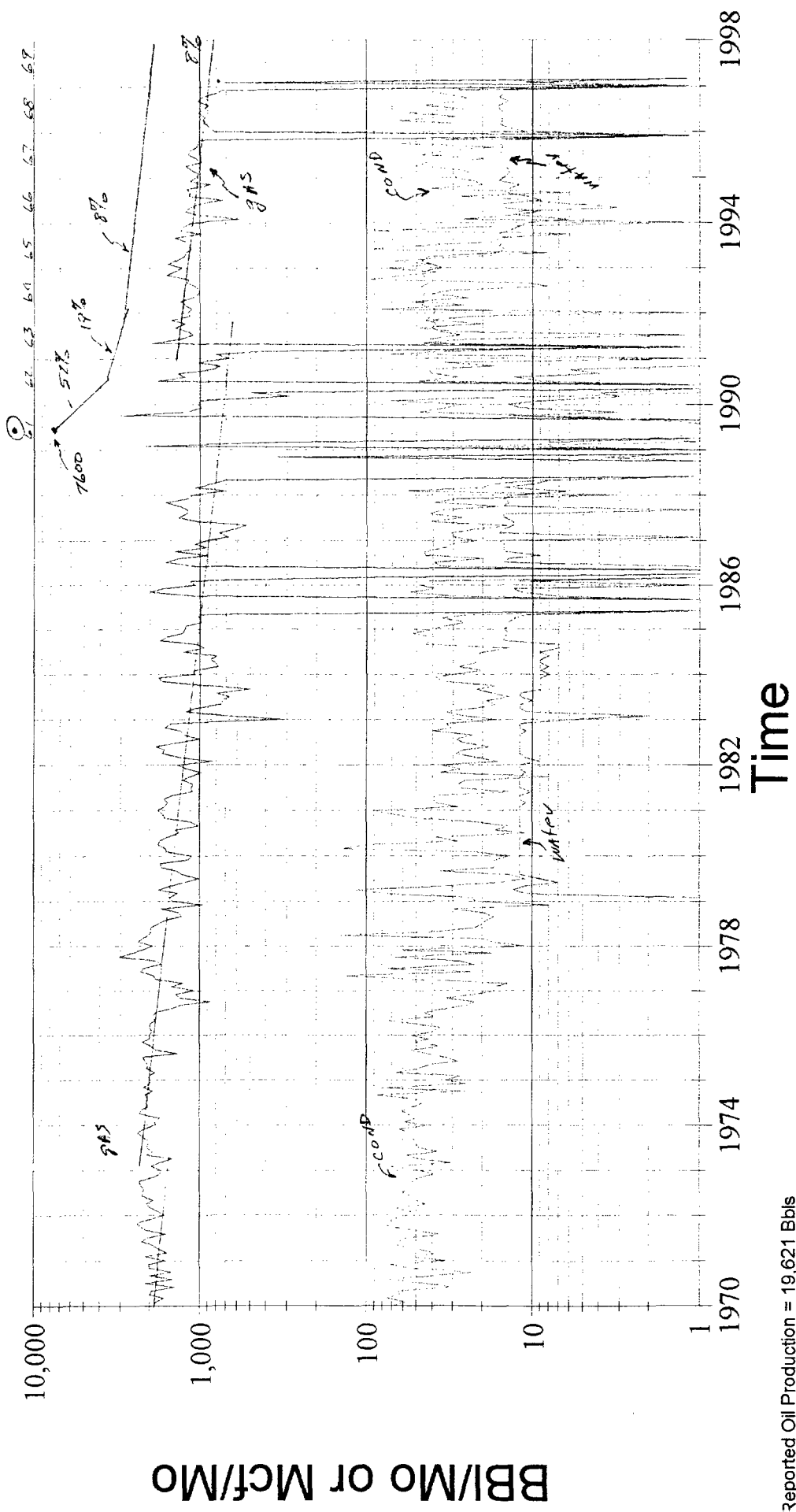


Reported Oil Production = 11,546 Bbls
 Reported Gas Production = 1,842,198 Mcf
 Reported Water Production = 6,265 Bbls

7/61

Field: BASIN *Darker Top*
 Lease: CANDADO | Well #1 (M-15-ZLN-7W)
 Operator: CHATEAU OIL AND GAS INC
 Production Rate vs Time
 For the Period 01/1970 to 12/1997 | API: 30039064450000

Oil
Gas
Water
Wells



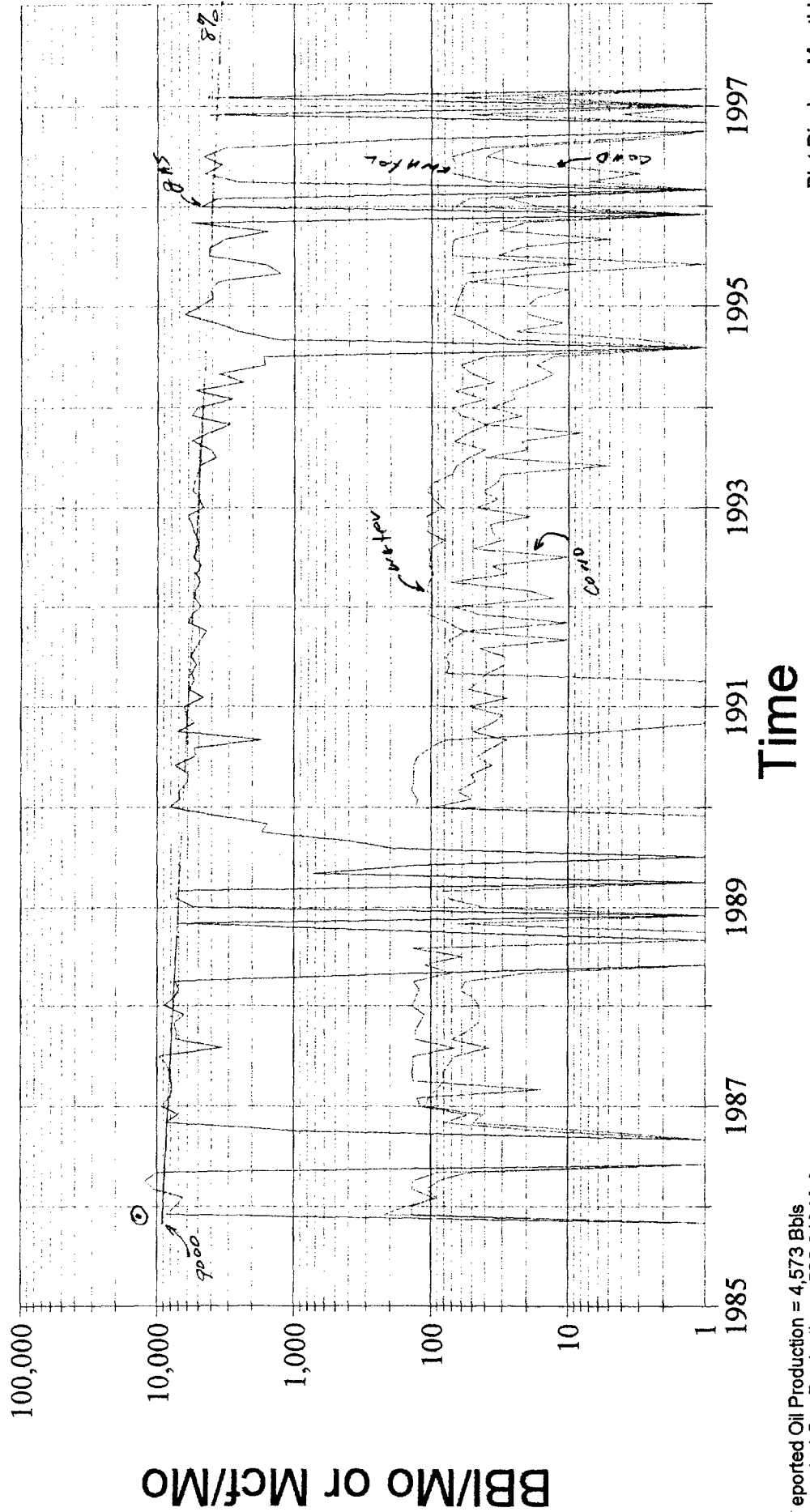
Reported Oil Production = 19,621 Bbls
 Reported Gas Production = 645,208 Mcf
 Reported Water Production = 2,905 Bbls

P 8 # 21

12/85

Field: BASIN *D → Kof*
 Lease: CANDADO | Well #1E (*J-15-26 N-7 W*)
 Operator: CHATEAU OIL AND GAS INC
 Production Rate vs Time
 For the Period 01/1985 to 12/1997 | API: 30039234970000

Oil
Gas
Water
Wells



Reported Oil Production = 4,573 Bbls
 Reported Gas Production = 599,310 Mcf
 Reported Water Production = 8,676 Bbls