

District I  
PO Box 1980, Hobbs, NM 88241-1980

District II  
PO Drawer DD, Artesia, NM 88211-0719

District III  
1000 Rio Brasos Rd., Aztec, NM 87410

District IV  
PO Box 2088, Santa Fe, NM 87504-2088

State of New Mexico  
Energy, Minerals & Natural Resources Department

Form C-102  
Revised February 10, 1994  
Submit to Appropriate District Office  
State Lease - 4 Copies  
Fee Lease - 3 Copies

OIL CONSERVATION DIVISION

PO Box 2088  
Santa Fe, NM 87504-2088

AMENDED REPORT

WELL LOCATION AND ACREAGE DEDICATION PLAT

|   |               |   |  |   |           |                   |
|---|---------------|---|--|---|-----------|-------------------|
| 1 | API Number    | 2 | Pool Code                              | 3 | Pool Name |                   |
| 4 | Property Code | 5 | Property Name                          |   | 6         | Well Number<br>11 |
| 7 | OGRID No.     | 8 | Operator Name<br>Exxon Company, U.S.A. |   | 9         | Elevation<br>3589 |

<sup>10</sup>Surface Location

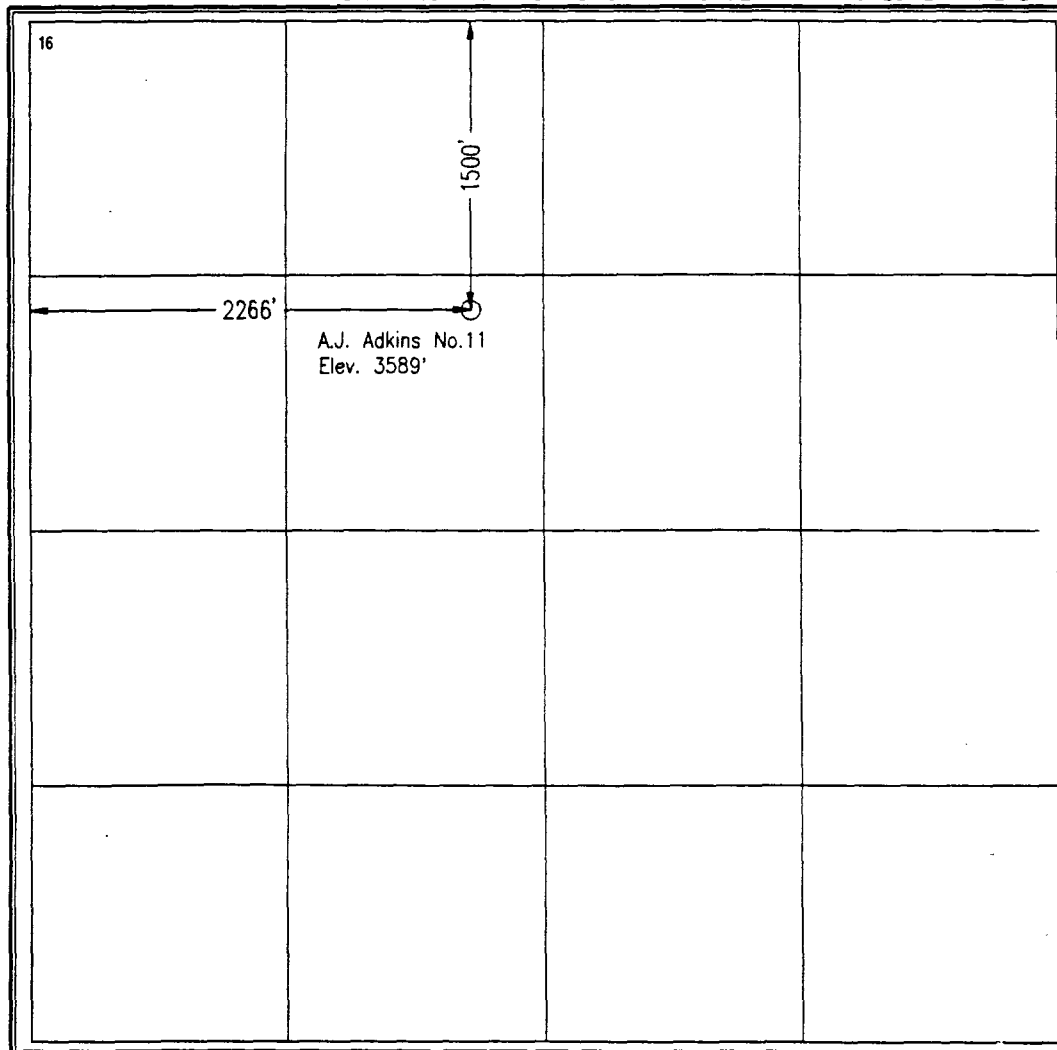
|                    |               |                  |               |         |                       |                           |                       |                        |               |
|--------------------|---------------|------------------|---------------|---------|-----------------------|---------------------------|-----------------------|------------------------|---------------|
| UL or lot no.<br>F | Section<br>10 | Township<br>21 S | Range<br>36 E | Lot Idn | Feet from the<br>1500 | North/South line<br>North | Feet from the<br>2266 | East/West line<br>West | County<br>Lea |
|--------------------|---------------|------------------|---------------|---------|-----------------------|---------------------------|-----------------------|------------------------|---------------|

<sup>11</sup>Bottom Hole Location If Different From Surface

|               |         |          |       |         |               |                  |               |                |        |
|---------------|---------|----------|-------|---------|---------------|------------------|---------------|----------------|--------|
| UL or lot no. | Section | Township | Range | Lot Idn | Feet from the | North/South line | Feet from the | East/West line | County |
|---------------|---------|----------|-------|---------|---------------|------------------|---------------|----------------|--------|

|                                     |                               |                                  |                         |
|-------------------------------------|-------------------------------|----------------------------------|-------------------------|
| <sup>12</sup> Dedicated Acres<br>40 | <sup>13</sup> Joint or Infill | <sup>14</sup> Consolidation Code | <sup>15</sup> Order No. |
|-------------------------------------|-------------------------------|----------------------------------|-------------------------|

NO ALLOWABLE WILL BE ASSIGNED TO THIS COMPLETION UNITL ALL INTERESTS HAVE BEEN CONSOLIDATED OR A NON-STANDARD UNIT HAS BEEN APPROVED BY THE DIVISION



<sup>17</sup> OPERATOR CERTIFICATION

I hereby certify that the information contained herein is true and complete to the best of my knowledge and belief.

Exhibit No. 10  
Exxon Corporation  
Case No. 11665  
Hrg. Date: December 5, 1996

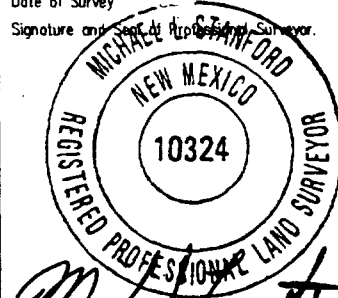
<sup>18</sup> SURVEYOR CERTIFICATION

I hereby certify that the well location shown on this plat was plotted from field notes of actual surveys made by me or under my supervision, and that the same is true and correct to the best of my belief.

November 12, 1996

Date of Survey

Signature and Seal of Registered Surveyor



Certificate Number

10324

District I  
PO Box 1980, Hobbs, NM 88241-1980

District II  
PO Drawer DD, Artesia, NM 88211-0719

District III  
1000 Rio Brasas Rd., Aztec, NM 87410

District IV  
PO Box 2088, Santa Fe, NM 87504-2088

State of New Mexico  
Energy, Minerals & Natural Resources Department

Form C-102  
Revised February 10, 1994  
Submit to Appropriate District Office  
State Lease - 4 Copies  
Fee Lease - 3 Copies

OIL CONSERVATION DIVISION

PO Box 2088  
Santa Fe, NM 87504-2088

AMENDED REPORT

WELL LOCATION AND ACREAGE DEDICATION PLAT

|   |               |   |                                     |   |           |                   |
|---|---------------|---|-------------------------------------|---|-----------|-------------------|
| 1 | API Number    | 2 | Pool Code                           | 3 | Pool Name |                   |
| 4 | Property Code | 5 | Property Name                       |   | 6         | Well Number<br>14 |
| 7 | OGRID No.     | 8 | Exxon Company, U.S.A. Operator Name |   | 9         | Elevation<br>3591 |

<sup>10</sup>Surface Location

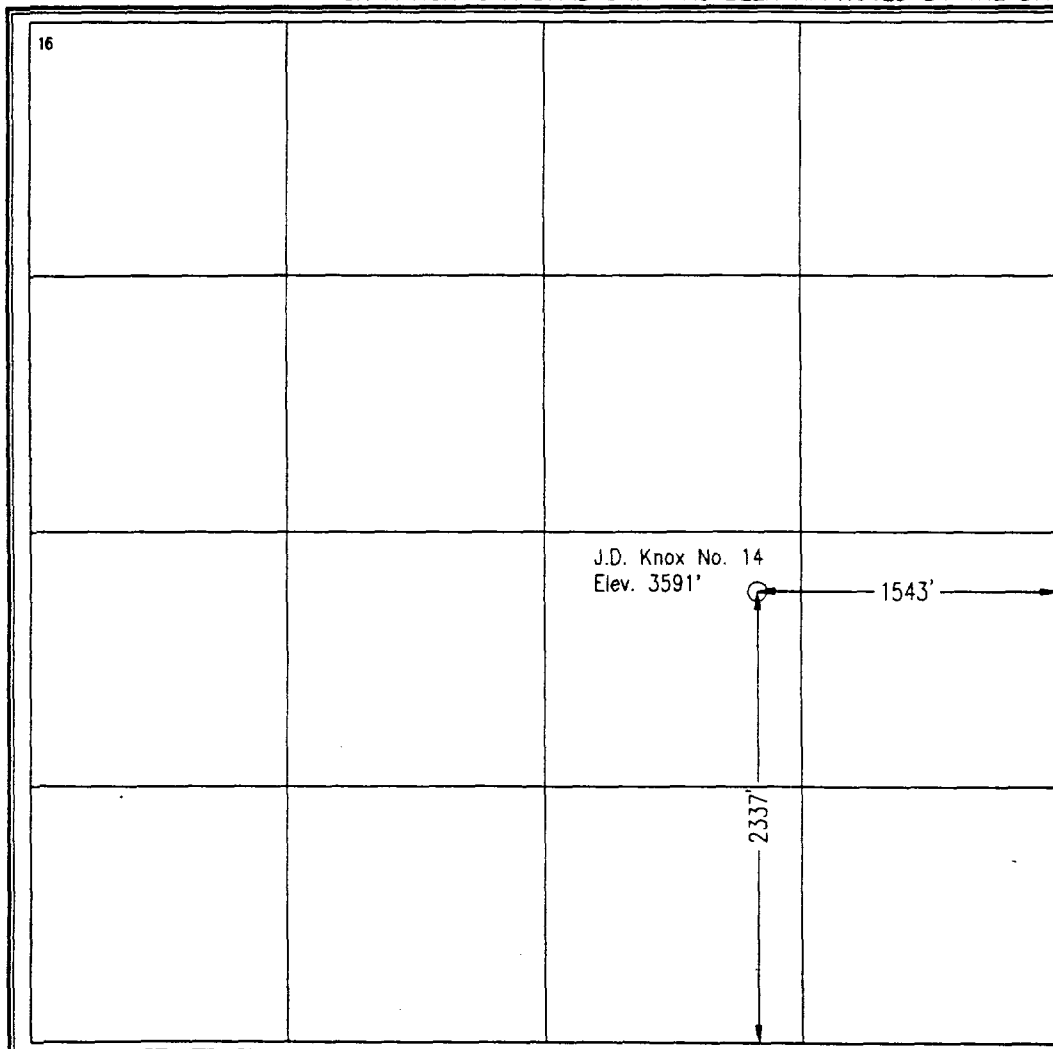
|                    |               |                  |               |         |                       |                           |                       |                        |               |
|--------------------|---------------|------------------|---------------|---------|-----------------------|---------------------------|-----------------------|------------------------|---------------|
| UL or lot no.<br>J | Section<br>10 | Township<br>21 S | Range<br>36 E | Lot Idn | Feet from the<br>2337 | North/South line<br>South | Feet from the<br>1543 | East/West line<br>East | County<br>Lea |
|--------------------|---------------|------------------|---------------|---------|-----------------------|---------------------------|-----------------------|------------------------|---------------|

<sup>11</sup>Bottom Hole Location If Different From Surface

|               |         |          |       |         |               |                  |               |                |        |
|---------------|---------|----------|-------|---------|---------------|------------------|---------------|----------------|--------|
| UL or lot no. | Section | Township | Range | Lot Idn | Feet from the | North/South line | Feet from the | East/West line | County |
|---------------|---------|----------|-------|---------|---------------|------------------|---------------|----------------|--------|

|                                     |                               |                                  |                         |
|-------------------------------------|-------------------------------|----------------------------------|-------------------------|
| <sup>12</sup> Dedicated Acres<br>40 | <sup>13</sup> Joint or Infill | <sup>14</sup> Consolidation Code | <sup>15</sup> Order No. |
|-------------------------------------|-------------------------------|----------------------------------|-------------------------|

NO ALLOWABLE WILL BE ASSIGNED TO THIS COMPLETION UNIT ALL INTERESTS HAVE BEEN CONSOLIDATED  
OR A NON-STANDARD UNIT HAS BEEN APPROVED BY THE DIVISION



<sup>17</sup> OPERATOR CERTIFICATION

I hereby certify that the information contained herein is true and complete to the best of my knowledge and belief.

Exhibit No. \_\_\_\_\_  
Exxon Corporation  
Case No. 11665  
Hrg. Date: December 5, 1996

<sup>18</sup> SURVEYOR CERTIFICATION

I hereby certify that the well location shown on this plat was plotted from field notes of actual surveys made by me or under my supervision, and that the same is true and correct to the best of my belief.

November 12, 1996

Date of Survey

Signature and Seal of Professional Surveyor.

Michael L. Stanford  
Certificate Number 10324