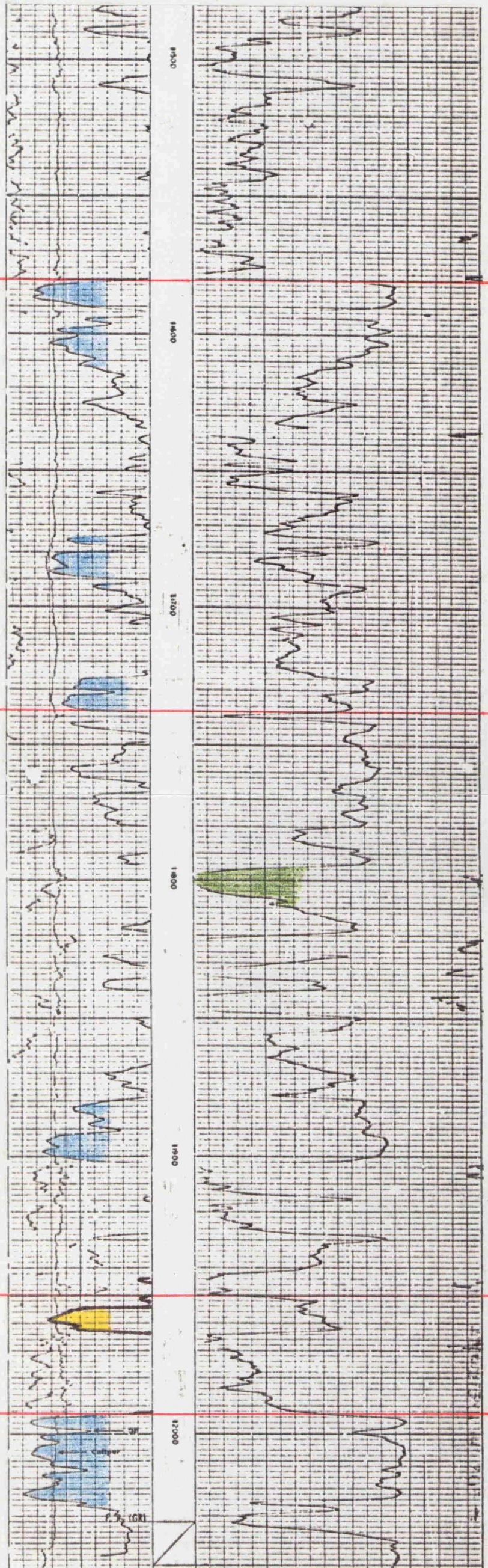


# SE NE 14 T16S R35E

Schlumberger		SIDEWALL NEUTRON POROSITY LOG	
COMPANY MESA PETROLEUM COMPANY			
WELL STATE COMM. #1			
FIELD NORTH SHOE BAR			
COUNTY LEA		STATE NEW MEXICO	
Location 2086' FNL, & 766' FCL		Other Log DIL, P	
Sec 14 Twp 16-S Rge 35-E			
Permanent Datum G.L. Elev. 3964		Elev. EG	
Log Measured From K.B. 13 Ft. Above Perm. Datum		DJ	
Drilling Measured From K.B.		GI	
Date	3-26-75	3-31-75	
Run No.	ONE	TWO	
Depth-Driller	11509	12050	
Depth-Logger	11511	12049	
Str. Log Interval	11510	12048	
Top Log Interval	4102	11300	
Casing-Driller	9 5/8 4100	9 5/8 4100	
Casing-Logger	4102		
Bit Size	8 3/4 TO 4 7/8	6 8 TO 2 TO 20	
Type Fluid in Hole	CEL. EX-AQUA GEL		
Dens. Visc.	8.6 54	8.5 38	
pH (Fluid Loss)	N.A. 7	N.A. 110	ml
Source of Sample	CIRC.	PIT	
Run @ Rate	1.52 @ 63	2.1 @ 70	?
Run @ Rate	4.55 @ 61	1.3 @ 70	?
Source @ Rate	2.28 @ 63	-	?
Run @ Rate	M 10	M 1	?
Run @ Rate	6.8 @ 150	1.1 @ 150	?
Log Run Stopped	19:00 3-25	1500	
Log Run on Break	01:15 3-26	2000	
Max. Run Temp	150	158	?
Equip. Location	7232 HOBBS 7646 HOBBS		
Recorded By	KEPPER, WYANT, WILSON		
Worked By	MOORE, PFFSTON		

Spud: 2/7/75  
Comp: 4/6/75  
Dry Hole



Atoka Lime

Atoka Clastics

Atoka "Brunson" Sand

Morrow Lime

No DST or Perf's

NEW MEXICO OIL CONSERVATION DIVISION

EXHIBIT E

CASE NO. \_\_\_\_\_