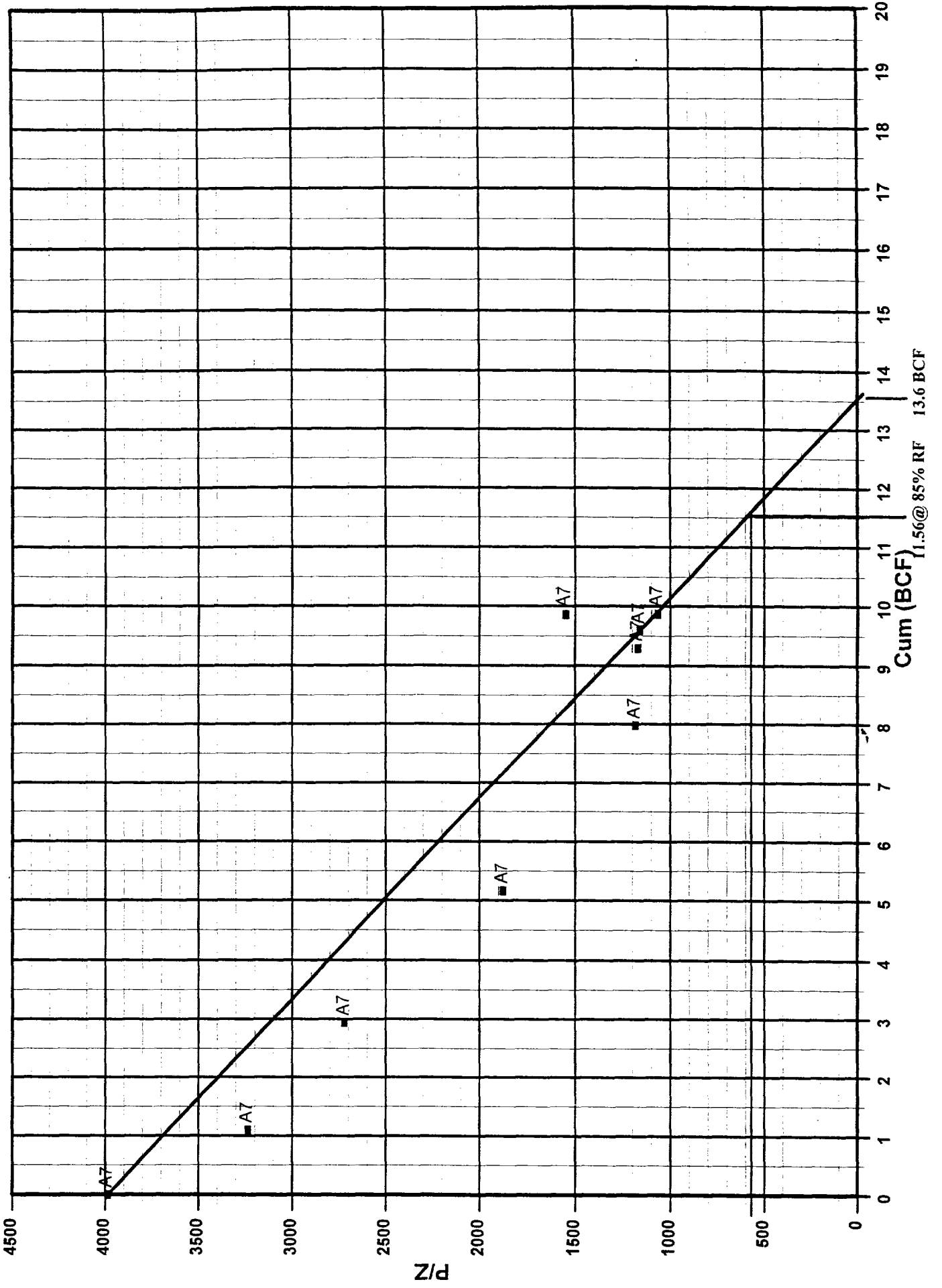


**Ute Indians A 7
Sec 2 T31N R14W**

Cumulative Production (5/98)	10,022	MMCF
Decline Curve EUR	10,119	MMCF
P/Z GIP	13,600	MMCF
P/Z @ 85% RF	11,560	MMCF
Unrecovered Reserves	1,441	MMCF

Ute Dome Paradox

P/Z Plot

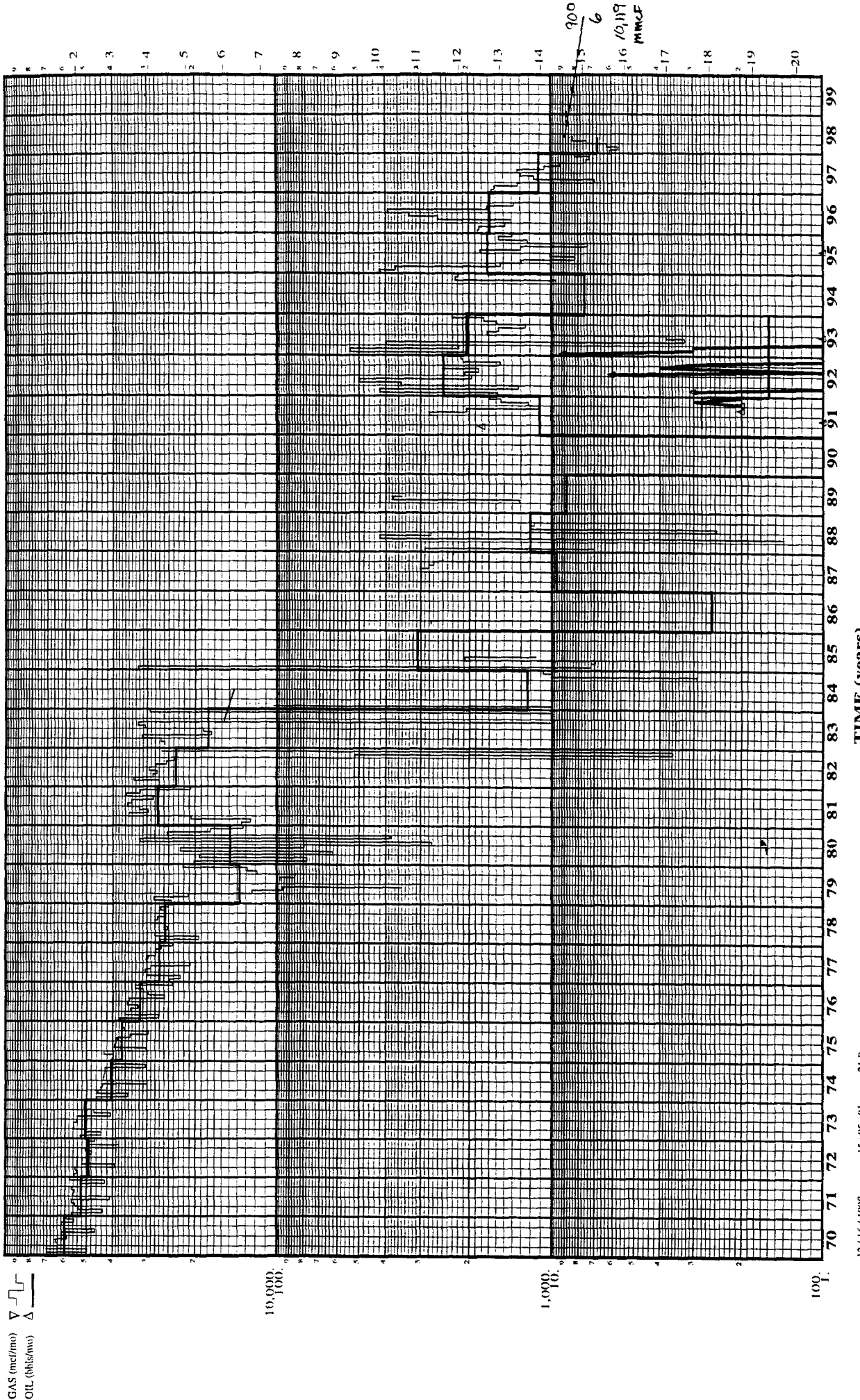


Cross Timbers Oil Company

UTE INDIANS A 7
 CROSS TIMBERS OPERATING COMPANY
 UTE DOME (PARADOX /SH/)
 SAN JUAN, NEW MEXICO
 2 31 N14 W
 F
 30045110490000

CTOC -

Oil (bbls/mo)	Gas (mcf/mo)	Oil (bbls)	Gas (mcf)	Res. Cat. Life	As-of-Date
0	0	67	10,022,087	Setup file	0.000
0	0	0	0	Q. Prod	
0.0 %	0.0 %	67	10,022,087	Q. Owner	
		0	0	Q. Other	
Gross Claim @ **/**		Gross Remaining		P.W. @ 0.0 %	
Gross Ultimate		Net Remaining		\$ 0	
Net Remaining		Flat Life (years)		Net Cash Flow	
0.00		0.0		\$ 0	
Oil Price (\$/bbl)		G.P.C. (\$/bbl)		Last Production	
0.00		0.00		0598	
Gas Price (\$/mcf)		G.P.C. (\$/mcf)		Net Cash Flow	
0.00		0.00		\$ 0	
W.I. 0.00000 %		Run Date :		Run Time :	
N.R.I. 0.00000 %					



Ute Indians A 7 Production History

- Nov-55 - Perforate Paradox and acidize with 11,000 gallons
- Nov-61 Repair casing leak at 3815 feet
- May-84 Perforate Honnacker Trail
- Jun-84 Squeeze casing leak 377-439 feet
- May-85 Pump solvent/acid job
- Jun-93 Squeeze Honnacker Trail and acidize Paradox