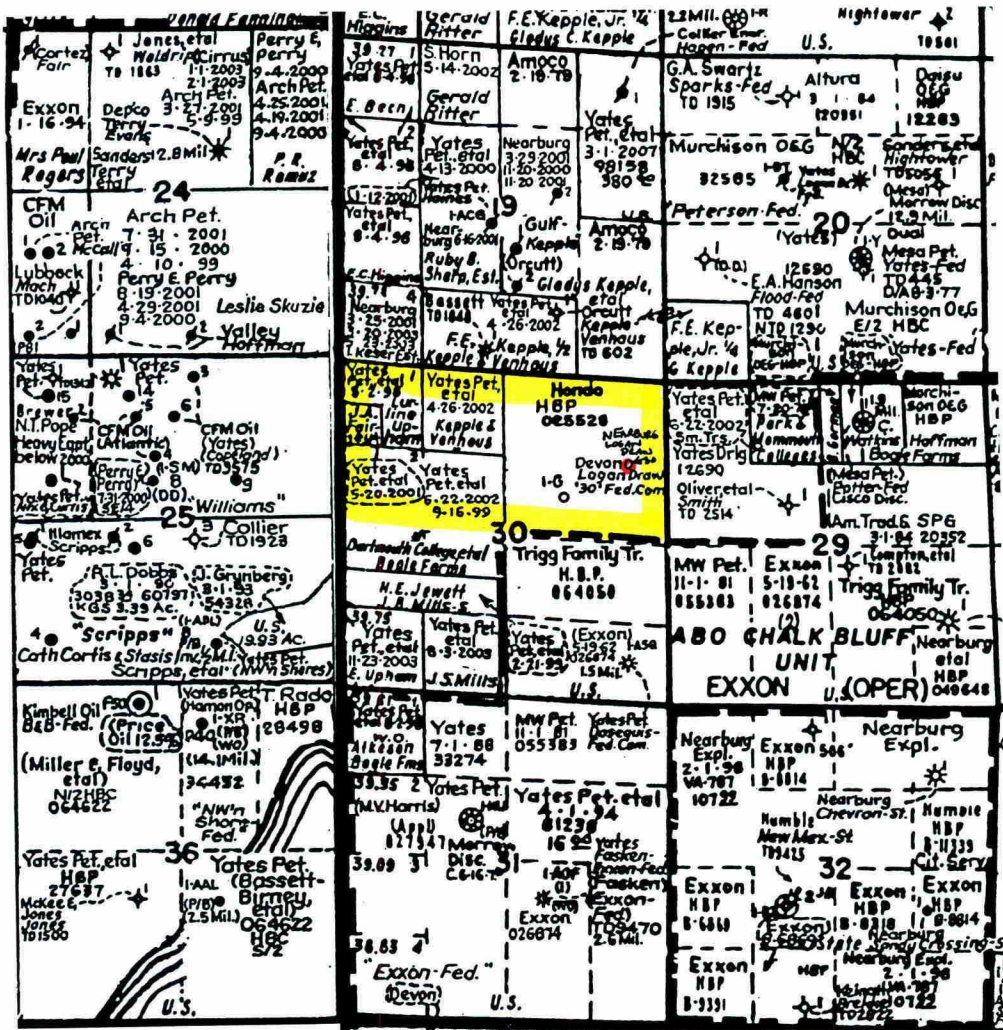


Logan Draw "30" Fed. Com. #1
 1650' FNL, 660' FEL
 Section 30, T-17-S, R-27-E, NMPM
 Eddy County New Mexico



Proration Unit



Location

BEFORE THE OIL CONSERVATION DIVISION
 Santa Fe, New Mexico

Case No. 12319 Exhibit No. 1

Submitted by:

Nearburg Exploration Company, LLC

Hearing Date: February 3, 2000