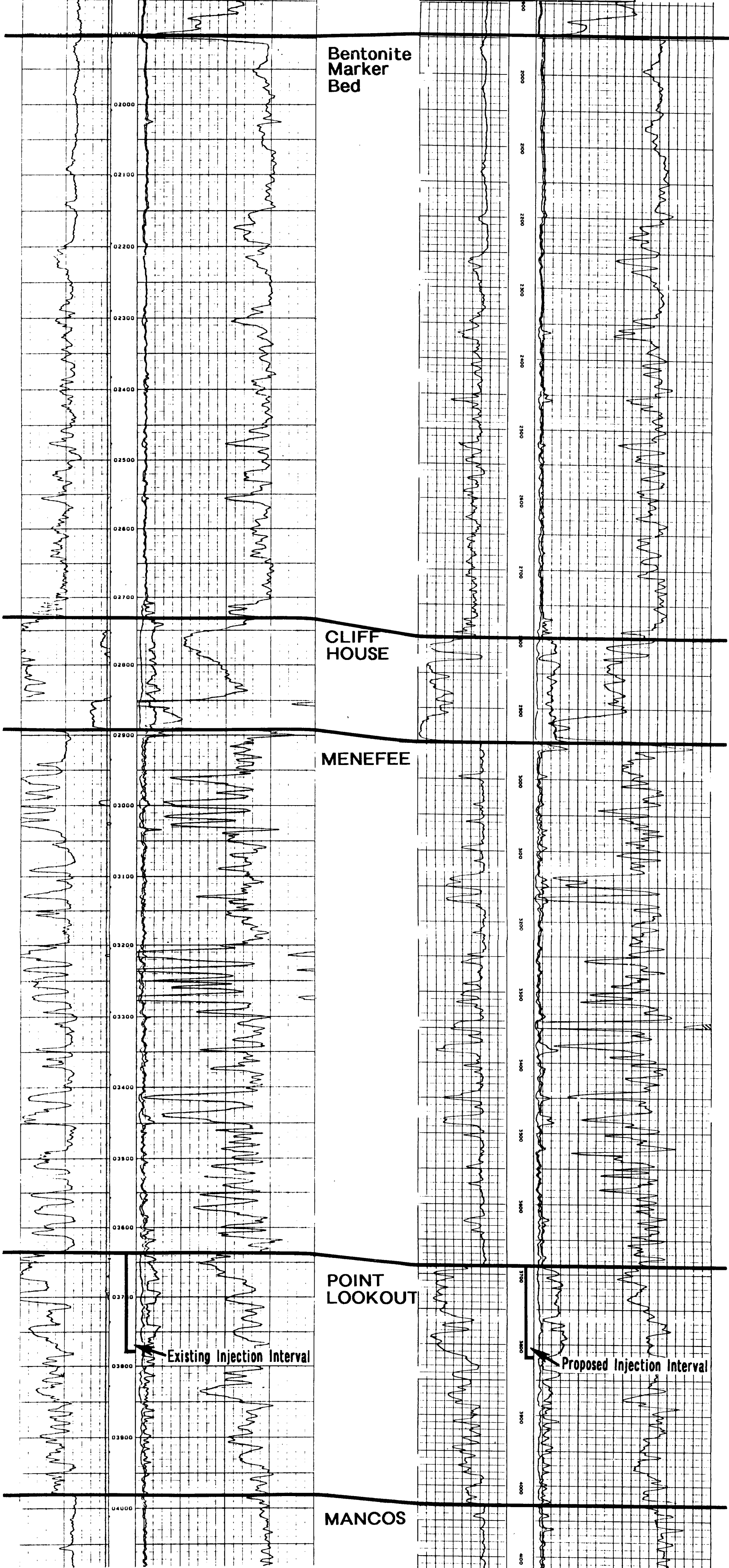


North
 STELLA NEEDS A COM #1E

South
 STELLA NEEDS A COM #1

INDUCTION ELECTRICAL LOG	
COMPANY: DUGAN PRODUCTION CORPORATION	
WELL: STELLA NEEDS A COM #1E	
FIELD: BASIN DAKOTA	
COUNTY: SAN JUAN STATE: NEW MEXICO	
LOCATION: 29° FNL x 70° FNL Section 36-30N-14W	Other Services: CUL/GR
SEC: 36 TOP: 30N RUC: 14W	30
GROUND LEVEL: 5577	KB: 5581
Log Measured from: 12' Above Permanent Datum	DF: 5582
Logging Measured from: 5'	DL: 5583

INDUCTION ELECTRICAL LOG	
COMPANY: STELLA DYSART	
WELL: STELLA DYSART-	
FIELD: BASIN DAKOTA #31	
LOCATION: SEC. 36-30N-14W	
SW NE SW	
COUNTY: SAN JUAN STATE: NEW MEXICO	
FILING No.	
Other Surveys: SGR	
Location of Well:	
1650' FSL	
1650' FWL	
SEC. 36-30N-14W	
Elevation: D.F. 5503'	
E.W. 5502'	
or G.A. 5532'	



Bentonite
 Marker
 Bed

CLIFF
 HOUSE

MENEFEE

POINT
 LOOKOUT

Existing Injection Interval

Proposed Injection Interval

MANCOS