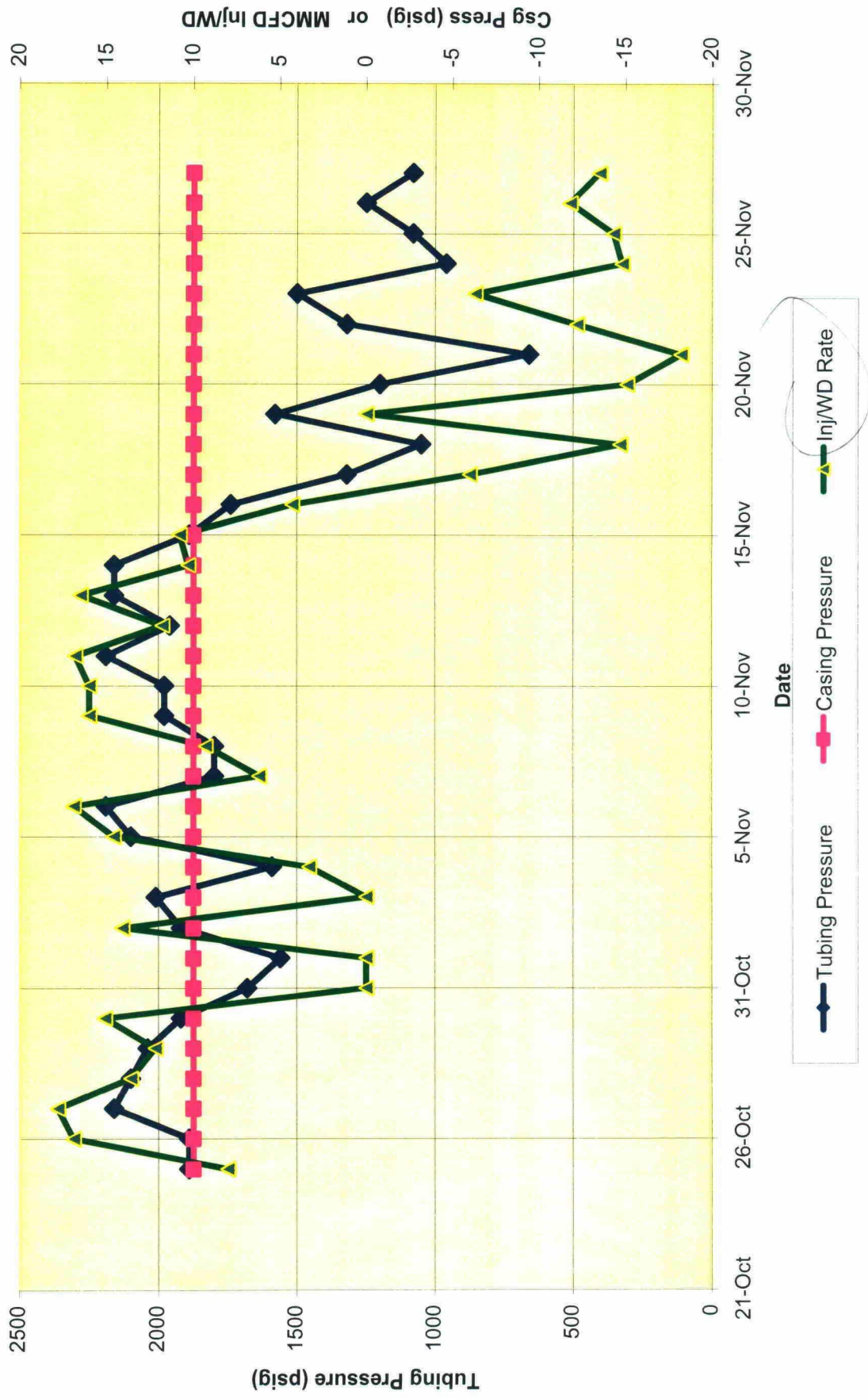


LG&E Grama Ridge Gas Storage Unit
Daily Injection/Withdrawal Rates and Pressures

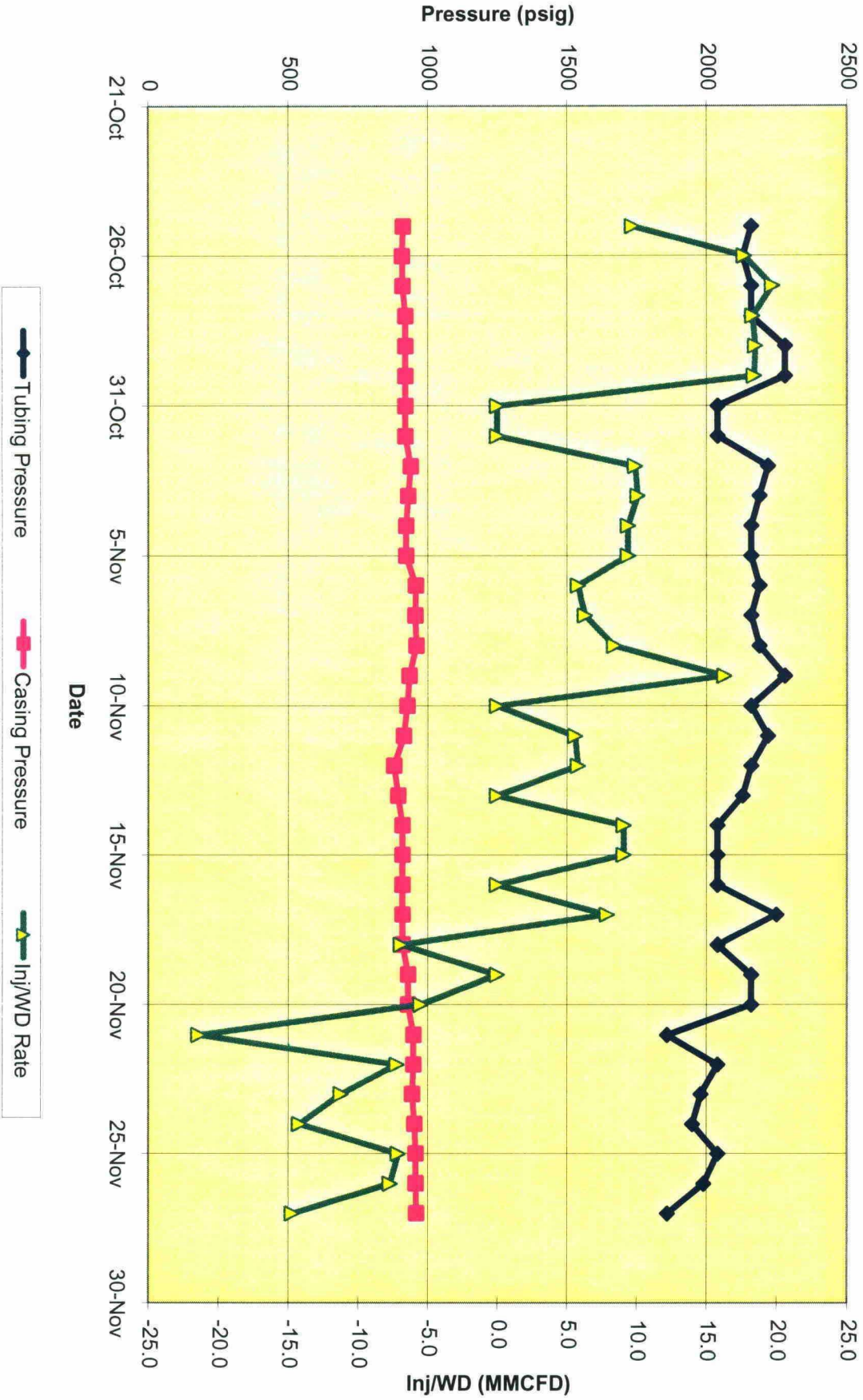
= net injection
 = net withdrawal

Date	GRM #1		GRM #2		GRM #4		GRM #2		GRM #4		GRM #2		GRM #4		GRM #2		GRM #4		Overall Field Cum	
	TP	CP	TP	CP	TP	CP	TP	CP	TP	CP	TP	CP	TP	CP	TP	CP	TP	CP		MMCFD
25-Oct	1890	1890	2160	2130	1360	1354	2160	2130	1360	1354	2160	2130	1360	1354	2160	2130	1360	1354	17.7	17.7
26-Oct	1890	1890	2130	2160	1354	1360	2130	2160	1354	1360	2130	2160	1354	1360	2130	2160	1354	1360	17.7	34.6
27-Oct	2160	2160	2160	2160	1360	1360	2160	2160	1360	1360	2160	2160	1360	1360	2160	2160	1360	1360	17.7	52.3
28-Oct	2100	2100	2160	2160	1360	1360	2160	2160	1360	1360	2160	2160	1360	1360	2160	2160	1360	1360	17.7	89.8
29-Oct	2040	2040	2280	2280	1440	1440	2280	2280	1440	1440	2280	2280	1440	1440	2280	2280	1440	1440	18.3	121.7
30-Oct	1920	1920	2280	2280	1440	1440	2280	2280	1440	1440	2280	2280	1440	1440	2280	2280	1440	1440	18.5	152.4
31-Oct	1680	1680	2040	2040	1440	1440	2040	2040	1440	1440	2040	2040	1440	1440	2040	2040	1440	1440	18.4	185.9
1-Nov	1560	1560	2040	2040	1440	1440	2040	2040	1440	1440	2040	2040	1440	1440	2040	2040	1440	1440	0.0	185.9
2-Nov	1920	1920	2220	2220	1433	1433	2220	2220	1433	1433	2220	2220	1433	1433	2220	2220	1433	1433	9.9	209.9
3-Nov	2010	2010	2190	2190	1430	1430	2190	2190	1430	1430	2190	2190	1430	1430	2190	2190	1430	1430	10.1	209.9
4-Nov	1590	1590	2160	2160	1428	1428	2160	2160	1428	1428	2160	2160	1428	1428	2160	2160	1428	1428	9.4	220.0
5-Nov	2100	2100	2160	2160	1428	1428	2160	2160	1428	1428	2160	2160	1428	1428	2160	2160	1428	1428	9.4	232.7
6-Nov	2190	2190	2190	2190	1467	1467	2190	2190	1467	1467	2190	2190	1467	1467	2190	2190	1467	1467	5.8	256.7
7-Nov	1800	1800	2160	2160	1456	1456	2160	2160	1456	1456	2160	2160	1456	1456	2160	2160	1456	1456	6.3	279.4
8-Nov	1800	1800	2190	2190	1448	1448	2190	2190	1448	1448	2190	2190	1448	1448	2190	2190	1448	1448	8.4	291.9
9-Nov	1980	1980	2280	2280	1500	1500	2280	2280	1500	1500	2280	2280	1500	1500	2280	2280	1500	1500	8.4	309.6
10-Nov	1980	1980	2160	2160	1495	1495	2160	2160	1495	1495	2160	2160	1495	1495	2160	2160	1495	1495	16.3	341.9
11-Nov	2190	2190	2220	2220	1498	1498	2220	2220	1498	1498	2220	2220	1498	1498	2220	2220	1498	1498	5.6	357.9
12-Nov	1960	1960	2160	2160	1504	1504	2160	2160	1504	1504	2160	2160	1504	1504	2160	2160	1504	1504	5.8	380.3
13-Nov	2160	2160	2130	2130	1506	1506	2130	2130	1506	1506	2130	2130	1506	1506	2130	2130	1506	1506	0.0	397.9
14-Nov	2160	2160	2040	2040	1514	1514	2040	2040	1514	1514	2040	2040	1514	1514	2040	2040	1514	1514	0.0	414.4
15-Nov	1890	1890	2040	2040	1514	1514	2040	2040	1514	1514	2040	2040	1514	1514	2040	2040	1514	1514	9.1	433.8
16-Nov	1740	1740	2040	2040	1514	1514	2040	2040	1514	1514	2040	2040	1514	1514	2040	2040	1514	1514	9.1	453.7
17-Nov	1320	1320	2250	2250	1514	1514	2250	2250	1514	1514	2250	2250	1514	1514	2250	2250	1514	1514	7.9	458.0
18-Nov	1050	1050	2040	2040	1514	1514	2040	2040	1514	1514	2040	2040	1514	1514	2040	2040	1514	1514	0.0	459.9
19-Nov	1580	1580	2160	2160	1514	1514	2160	2160	1514	1514	2160	2160	1514	1514	2160	2160	1514	1514	0.0	-21.6
20-Nov	1200	1200	2160	2160	1514	1514	2160	2160	1514	1514	2160	2160	1514	1514	2160	2160	1514	1514	0.0	438.3
21-Nov	660	660	1860	1860	1514	1514	1860	1860	1514	1514	1860	1860	1514	1514	1860	1860	1514	1514	-5.5	417.7
22-Nov	1320	1320	2040	2040	1560	1560	2040	2040	1560	1560	2040	2040	1560	1560	2040	2040	1560	1560	-21.4	378.1
23-Nov	1500	1500	1980	1980	1560	1560	1980	1980	1560	1560	1980	1980	1560	1560	1980	1980	1560	1560	-7.2	358.7
24-Nov	960	960	1950	1950	1560	1560	1950	1950	1560	1560	1950	1950	1560	1560	1950	1950	1560	1560	-11.2	312.2
25-Nov	1080	1080	2040	2040	1565	1565	2040	2040	1565	1565	2040	2040	1565	1565	2040	2040	1565	1565	0.0	341.2
26-Nov	1250	1250	1990	1990	1575	1575	1990	1990	1575	1575	1990	1990	1575	1575	1990	1990	1575	1575	-7.1	290.8
27-Nov	1080	1080	1860	1860	1550	1550	1860	1860	1550	1550	1860	1860	1550	1550	1860	1860	1550	1550	-7.7	271.3
28-Nov					1550	1550			1550	1550			1550	1550			1550	1550	-14.7	243.1
29-Nov					0.0	0.0			0.0	0.0			0.0	0.0			0.0	0.0	0.0	0.0
30-Nov					0.0	0.0			0.0	0.0			0.0	0.0			0.0	0.0	0.0	243.1

Gramma Ridge Well #1



Gramma Ridge Well #2



Cum Gas & Avg Tbg Press

