

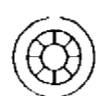
Marbob Energy Corporation Stratigraphic Section Lusk Morrow T19S R31E to 19S 33E Eddy & Lea Co., NM



16,600'



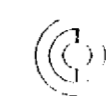
6200'



10,500'



13,700'



10,600'



Adobe Oil Comp.
Hannafin St. 1
Sec 16 - 19S - 31E

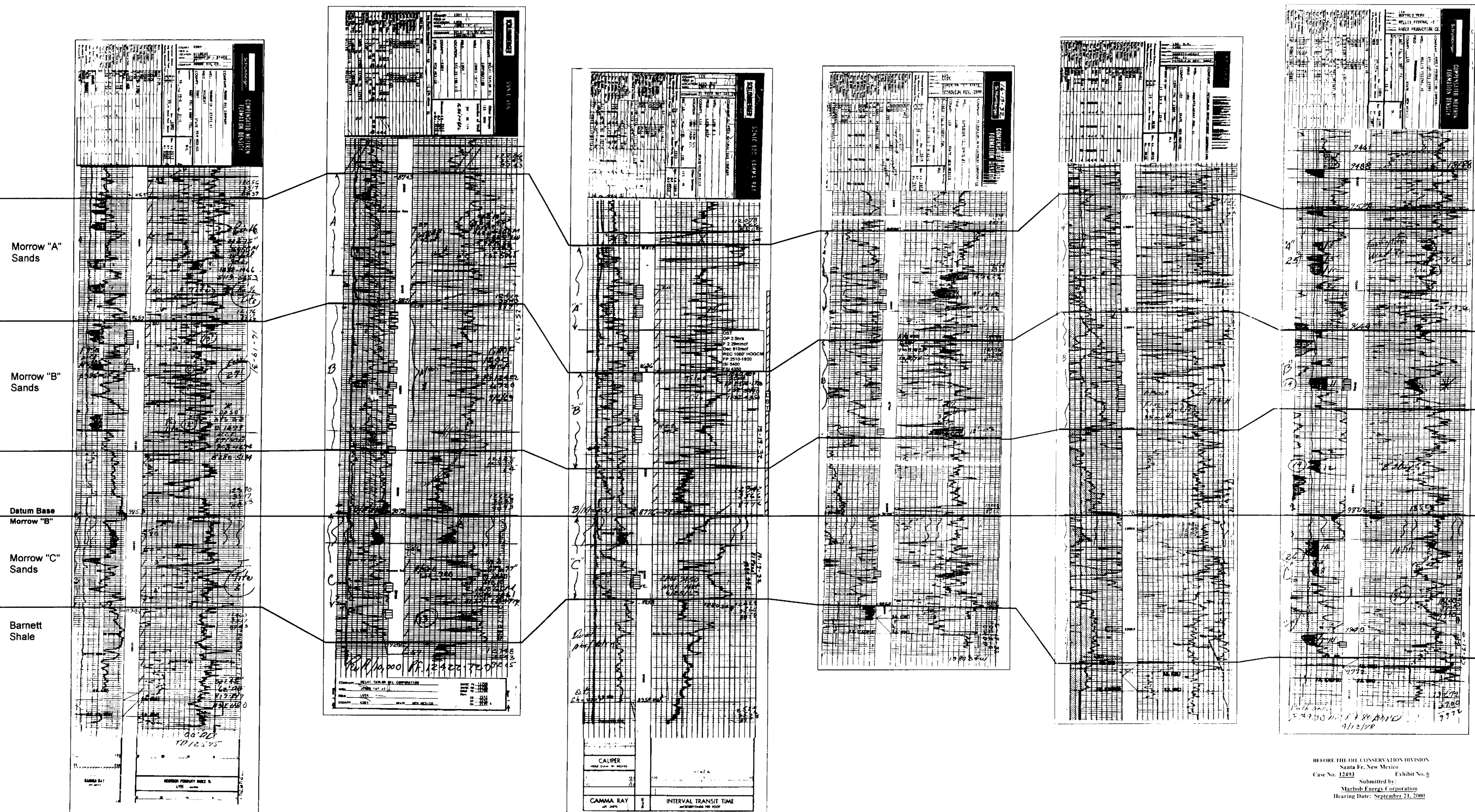
Delhi Taylor
Jones Fed 1
Sec 25 - 19S - 31E

Marbob Energy
Lusk Deep 5
Sec 19 - 19S - 32E

Petroleum Dev. Corp.
Superior C St. 1
Sec 16 - 19S - 32E

Petroleum Dev. Corp.
Roberts McKay Fed. 1
Sec 11 - 19S - 32E

Amoco Production
Nellis Fed 2
Sec 6 - 19S - 33E



Morrow 0.11BCF 0.7KBO
7/75 - 12/79

Morrow 1.5BCF 35KBO
9/63 - 9/74

Morrow 9.6BCF 135KBO
6/63 - Present

Morrow 2.1BCF 73KBO
4/76 - 2/87

Plug and Abandon

Morrow 0.7BCF 1.3KBO
6/79 - 4/81

BEFORE THE OIL CONSERVATION DIVISION
Santa Fe, New Mexico
Case No. 12493
Submitted by: Marbob Energy Corporation
Hearing Date: September 21, 2000