

North

Section 23

Section 24

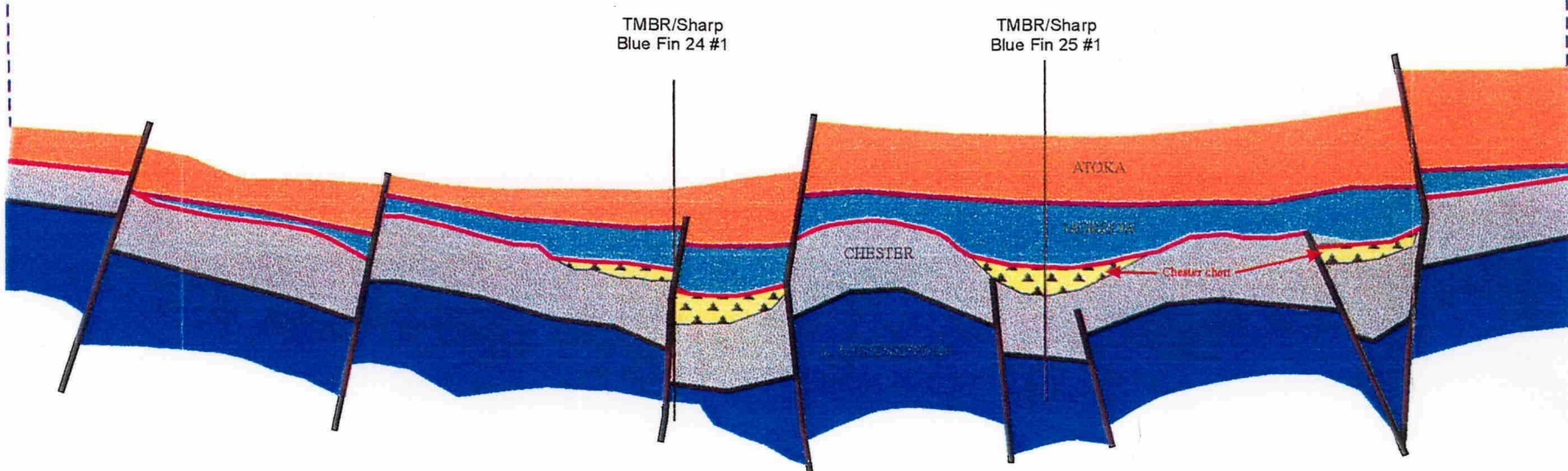
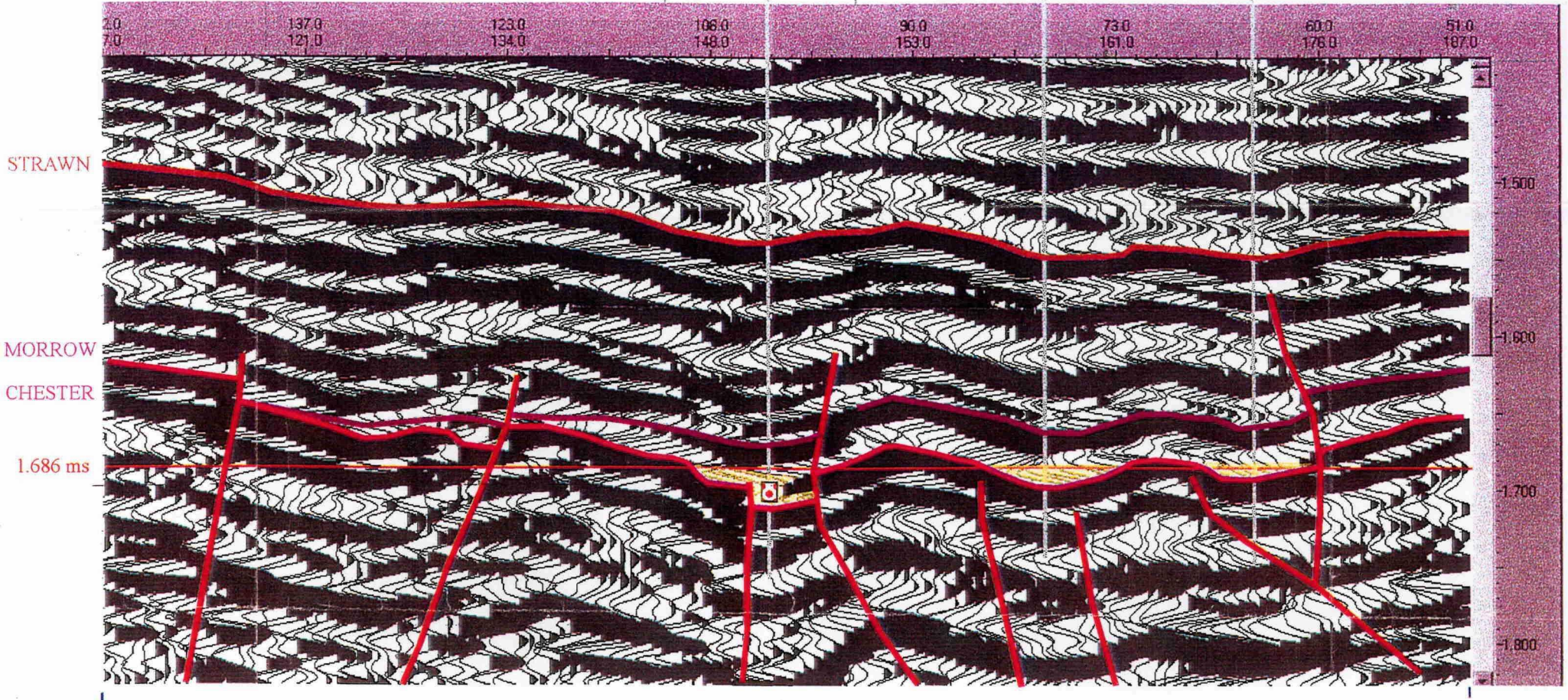
Section 25

South

TMBR/SHARP
BLUE FIN 24 #1

TMBR/SHARP
BLUE FIN 25 #1

NE/SW SEC. 25



Louis J. Mazzullo
 Certified Petroleum Geologist
 Albuquerque, New Mexico
 5/14/2002

BEFORE THE
 OIL CONSERVATION COMMISSION
 Case No. 12816 Exhibit No. 18-F
 Submitted By:
 TMBR/Sharp Drilling
 Hearing Date: May 16, 2002

BIG TUNA PROSPECT
 Twp. 16S, Rge. 35E
 Lea County, New Mexico