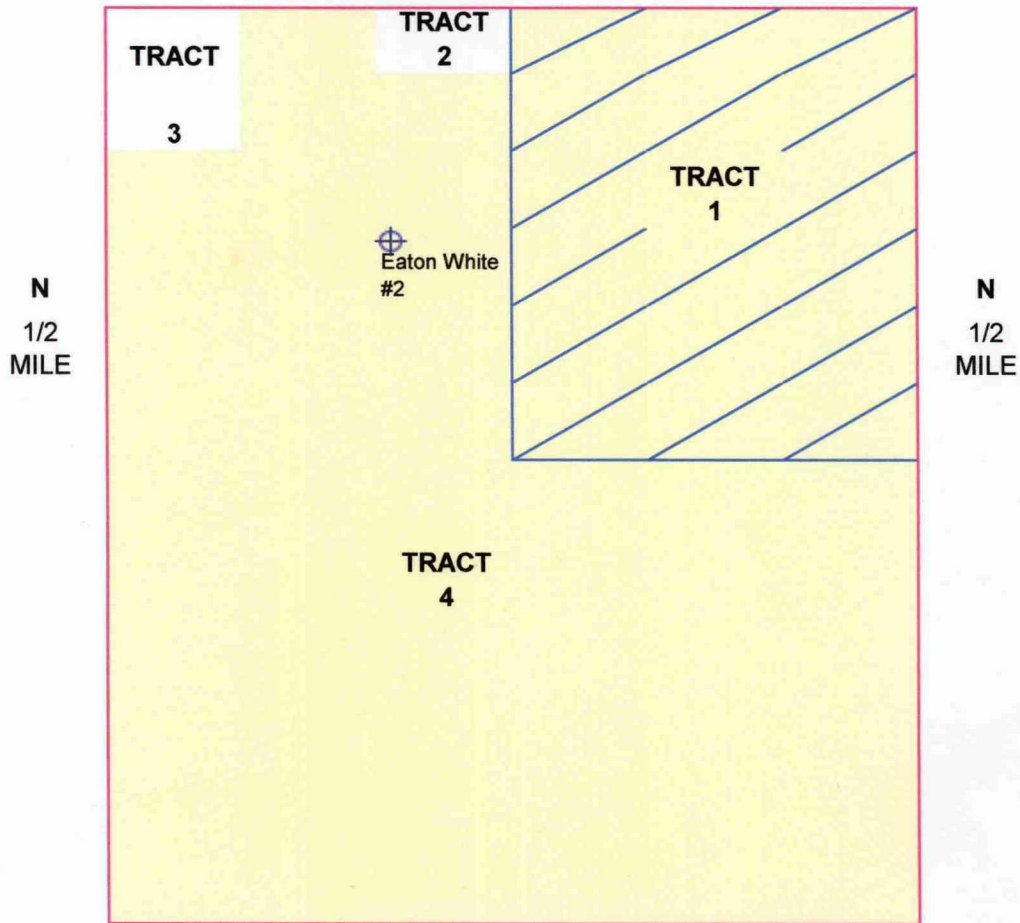


EATON WHITE #2 (PC)
1250' FNL, 1428' FEL
NE/4 SECTION 20-T29N-R13W
SAN JUAN COUNTY, NEW MEXICO
NE/4 = 160 ACRES

FROM SURFACE TO BASE OF PICTURED CLIFFS FORMATION

----- 1 / 2 - MILE -----



----- 1 / 2 - MILE -----

BEFORE THE
OIL CONSERVATION DIVISION
Case No. 12835 Exhibit No. 1
Submitted By:
Richardson Operating Company
Hearing Date: March 21, 2002
BEFORE THE

Eaton White #2 (PC)
 1250' FNL, 1428' FEL
 NE/4 Section 20-T29N-R13W
 San Juan County, New Mexico

Pictured Cliffs Formation

Tract	Location	Type Minerals	Net Acres	Gross Acres	Percent of Spacing Unit	Working Interest
1	NE/4NE/4	Fee	40.00	40.00	25.000000%	Richardson Production Company 75.0% Dr. William A. Hall 12.5% First National Bank Iowa City, IA 12.5% Trustee
2	Tract in NW/4 NE/4	Fee	2.39	2.39	1.49375%	Las Tierras Partnership 100.0%
3	Tract in NW/4NE/4	Fee	8.00	8.00	5.000000%	William S. Havens & Sonda J. 100.0% Havens, husband & wife, joint tenants
4	NW/4NE/4, less Tracts 2 and 3, S/2NE/4	Fee	109.61	109.61	68.50625%	Richardson Production Company 100.0%

SUMMARY

	Working Interest	Election
Richardson Production Company	87.25625%	Participate
Dr. William A. Hall	3.12500%	Uncommitted
First National Bank of Iowa City, IA, Trustee	3.12500%	Uncommitted
Las Tierras Partnership	1.49375%	Uncommitted
William S. Havens & Sonda J. Havens	5.00000%	Uncommitted
TOTAL	100.000000%	

Total	87.25625%	Participate
Total	12.74375%	Uncommitted