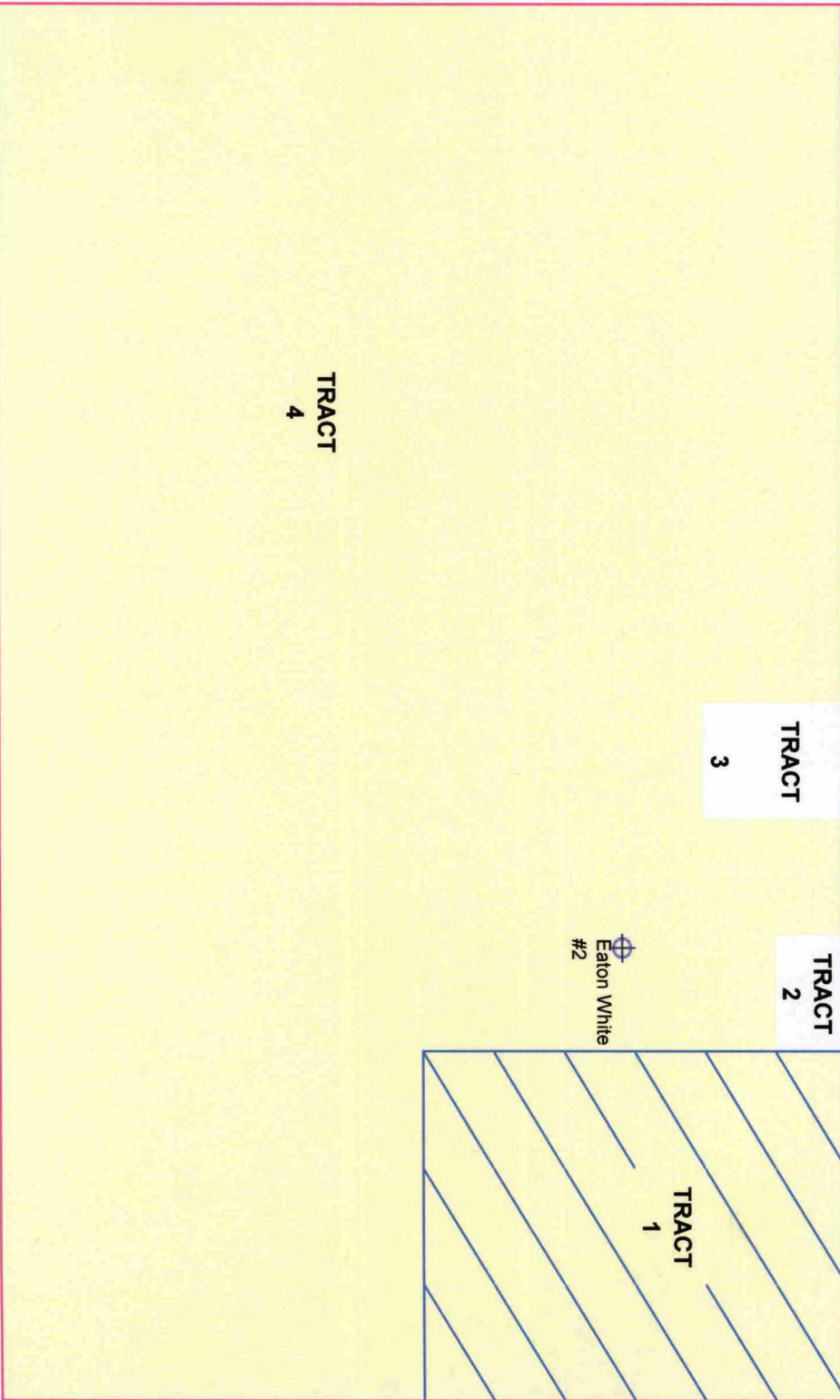


Eaton White #2 (FC)
1250' FNL, 1428' FEL
N/2 Section 20-T29N-R13W
San Juan County, New Mexico
N/2 = 320 ACRES

FROM SURFACE TO BASE OF FRUITLAND COAL FORMATION

-----1 - MILE-----



BEFORE THE
OIL CONSERVATION DIVISION
Case No. 12835 Exhibit No. 2
Submitted By: Richardson Operating Company
Hearing Date: March 21, 2002
BEFORE THE

Eaton White #2 (FC)
 1250' FNL, 1428' FEL
 N/2 Section 20-T29N-R13W
 San Juan County, New Mexico

Pictured Cliffs Formation

Tract	Location	Type Minerals	Net Acres	Gross Acres	Percent of Spacing Unit	Working Interest
1	NE/4NE/4	Fee	40.00	40.00	12.5000000%	Richardson Production Company 75.0% Dr. William A. Hall 12.5% First National Bank Iowa City, IA 12.5% Trustee
2	Tract in NW/4 NE/4	Fee	2.39	2.39	0.746875%	Las Tierras Partnership 100.0%
3	Tract in NW/4NE/4	Fee	8.00	8.00	2.5000000%	William S. Havens & Sonda J. 100.0% Havens, husband & wife, joint tenants
4	NW/4NE/4, less Tracts 2 and 3, S/2NE/4 and NW/4	Fee	109.61	269.61	84.253125%	Richardson Production Company 100.0%

SUMMARY

	Working Interest	Election
Richardson Production Company	93.628125%	Participate
Dr. William A. Hall	1.562500%	Uncommitted
First National Bank of Iowa City, IA, Trustee	1.562500%	Uncommitted
Las Tierras Partnership	0.746875%	Uncommitted
William S. Havens & Sonda J. Havens	2.500000%	Uncommitted
TOTAL	100.000000%	

Total	93.628125%	Participate
Total	6.371875%	Uncommitted