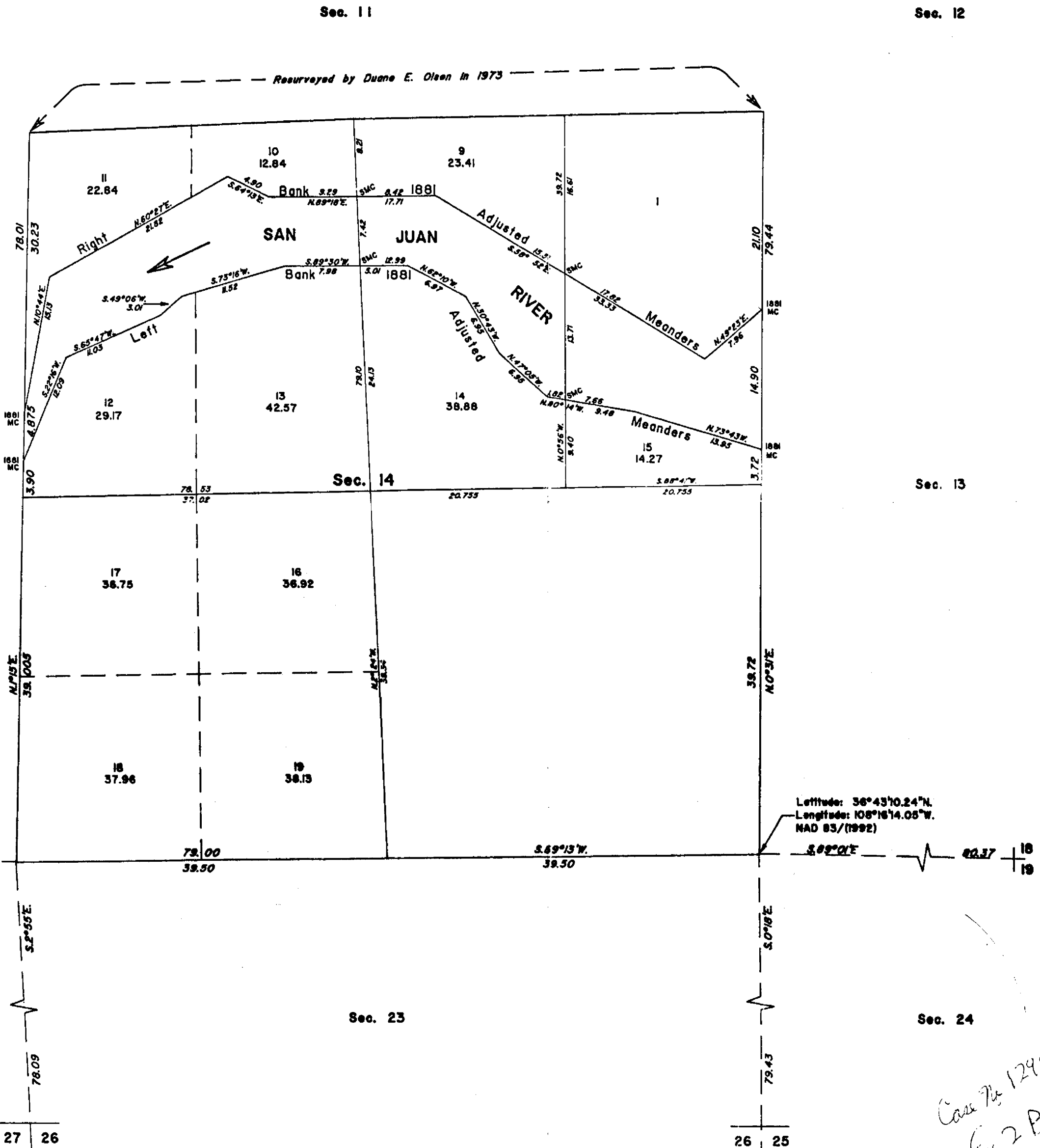
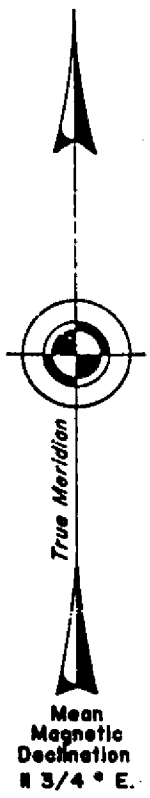


TOWNSHIP 29 NORTH, RANGE 14 WEST, OF THE NEW MEXICO PRINCIPAL MERIDIAN, NEW MEXICO
DEPENDENT RESURVEY AND SUBDIVISION OF SECTION



A history of surveys and additional information are contained in the field notes.

This plat represents the dependent resurvey of a portion of the subdivisional lines, and the adjusted record meanders of the 1881 right and left banks of the San Juan River, designed to restore the corners in their true original locations according to the best available evidence, and the subdivision of section 14, Township 29 North, Range 14 West, New Mexico Principal Meridian, New Mexico.

Except as indicated hereon, the lottings and areas are as shown on the plat approved August 31, 1882.

Survey executed by Mark L. Bush and Donald L. Brewer, Cadastral Surveyors, beginning October 28, 1998, and completed February 15, 1999, pursuant to Special Instructions dated and approved April 1, 1998, and Supplemental Special Instructions approved October 5, 1998, for Group No. 955, New Mexico.

UNITED STATES DEPARTMENT OF THE INTERIOR
BUREAU OF LAND MANAGEMENT

Santa Fe, New Mexico September 29, 1999

This plat is strictly conformable to the approved field notes, and the survey, having been correctly executed in accordance with the requirements of law and the regulations of this Bureau, is hereby accepted.

For the Director
[Signature]
Chief Cadastral Surveyor for New Mexico

Case No. 12910
Ex 2 B
10/22/02