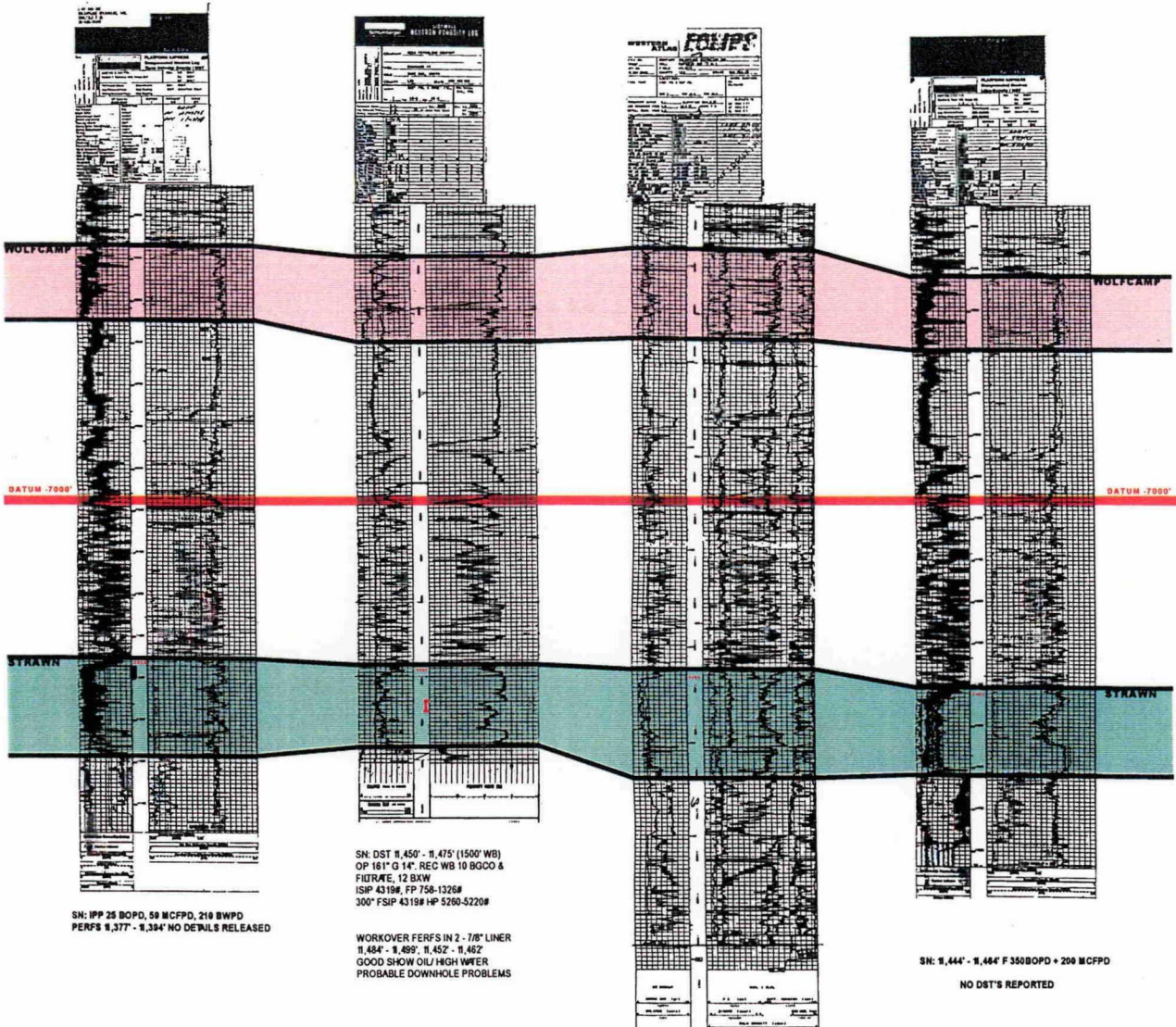


B

B'



SN: IPP 25 BOPD, 59 MCFPD, 216 BWPD  
 PERFS 8,377' - 8,394' NO DETAILS RELEASED

SN: DST 8,450' - 8,475' (1500' WB)  
 OP 16" G 14". REC WB 10 BGCO &  
 FILTERE, 12 BXW  
 ISIP 4319#, FP 758-1326#  
 300" FSIP 4319# HP 5200-5220#

WORKOVER FERFS IN 2 - 7/8" LINER  
 8,484' - 8,499', 8,452' - 8,462'  
 GOOD SHOW OIL/ HIGH WATER  
 PROBABLE DOWNHOLE PROBLEMS

SN: 8,444' - 8,464' F 350BOPD + 208 MCFPD  
 NO DST'S REPORTED

SN: 8,456' - 8,466' F 482 BOPD + 800 MCFPD  
 (1/28/96)  
 SN: 8,382' - 8,400' NHP (7/28/96)  
 A/105 GAL

NO DST'S REPORTED



PERMIAN RESOURCES, INC.  
 14400 SHILOH ROAD  
 SHERBOURNE, OKLAHOMA 73752  
**SHOEBAR AREA**  
 LEA COUNTY NEW MEXICO  
**CHAMBERS LEASE**  
 CROSS SECTION B-B'  
 STRAWN DATA  
 VERTICAL SCALE: 1"=100'  
 HORIZONTAL SCALE: NONE

Permian Resources, Inc.  
 NMOCD Case #12953  
 October 24, 2002  
 Exhibit No. 22