

A

GULF  
WATKINS NO.1  
SEC. 29, T-22-S, R-36-E  
3393 ELEV.

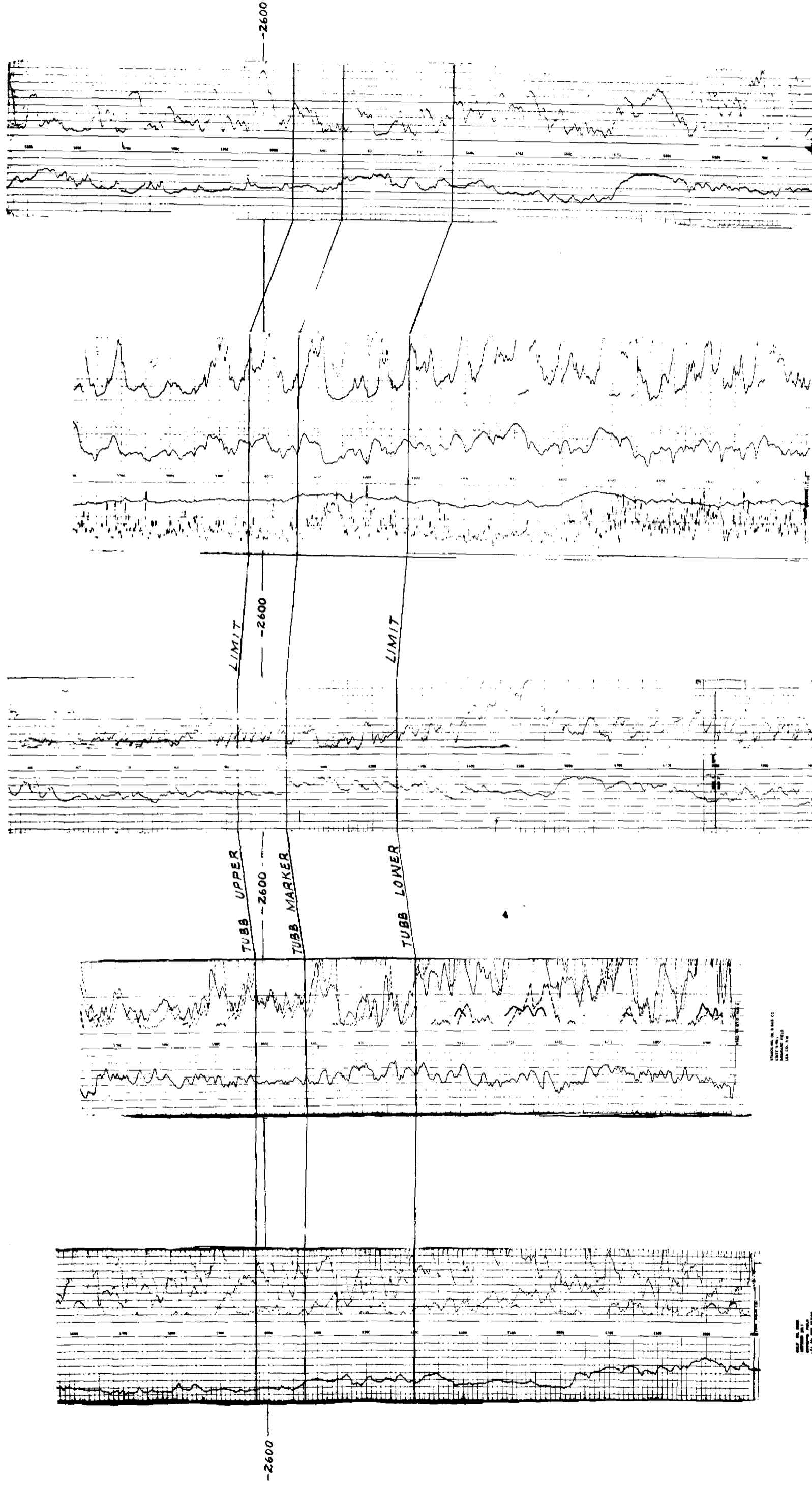
PAN AMERICAN PETROLEUM CORP.  
STATE S NO.1  
SEC. 32, T-22-S, R-36-E  
3400 ELEV.

PAN AMERICAN PETROLEUM CORP.  
STATE S NO.3  
SEC. 32, T-22-S, R-36-E  
3373 ELEV.

CITIES SERVICE  
STATE P NO.2  
SEC. 32, T-22-S, R-36-E  
3389 ELEV.

A

LION OIL CO.  
WYLE NO.1  
SEC. 9, T-22-S, R-36-E  
3385 ELEV.



BEFORE THE  
OIL CONSERVATION COMMISSION  
SANTA FE, NEW MEXICO

EXHIBIT 2

*Pan American*  
CASE 1347