

Northeast Haynes- gache 9 No. 1

DST #2 2492' to 2515' Lower Mesaverde (Point Lookout)
SI 1 hr., open 1 hr., SI 1 hr., fair blow in-
creasing throughout test. Rec. 350' of highly
gas cut mud. IFF 2507, ISIP 1891, IFF 170, FFF
257, PSIP 1743, FHP 2507.

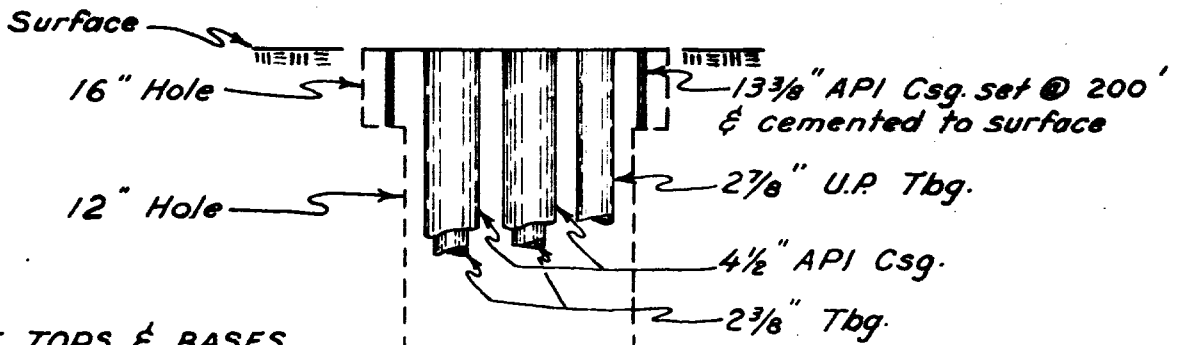
DST #3 6522' to 6600' Greenhorn
SI 1 hr., open 1 hr., SI 1 hr., good blow, in-
creasing throughout test, gas to surface in 17
min., 4.2 MCF after 30 min., 7.4 MCF after 1 hr.,
rec. 35' dark green high gravity crude, 135' oil
and gas cut mud.

Greenhorn Formation

A series of interbedded fractured marine limestone
and silty shale. This formation is considered as having a
common source of supply separate from that of the Dakota, due
to its environment of deposition. The Greenhorn is isolated
from zones above and below by impermeable shale.

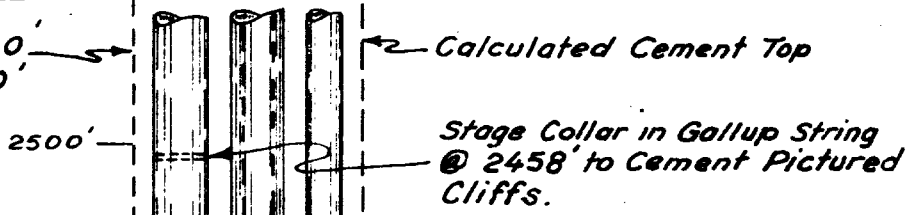
ILLEGIBLE

BEFORE EXAMINER USE
OIL CONSERVATION COMMISSION
EXHIBIT NO. <u>1</u>
CASE NO. <u>2160</u>

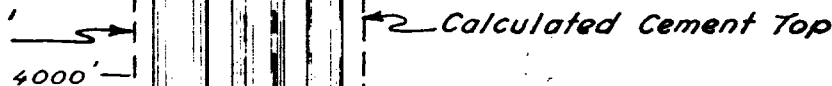


EST. TOPS & BASES

Pictured Cliffs - 2320'
Base - 2410'



Mesa Verde - 3813'
4000'



Upper Mancos - 4735'



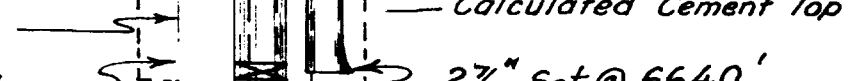
Gallup - 5595'
Base - 6324'



7" Hole

Cement Out Shoe of Gallup String @ 5934'

Greenhorn - 6518'
Base - 6595'



Dakota - 6630'
Base - 6914'

2 7/8" Set @ 6640'

T.D. - 6966'

Cement Out Shoe of Dakota String @ 6958'

BEFORE EXAMINER UTZ
OIL CONSERVATION COMMISSION
EXHIBIT NO. 2
CASE NO. 2160

CONTINENTAL OIL COMPANY
PROPOSED CASING AND CEMENTING PROGRAM
FOR TRIPLE COMPLETING A WELL
NORTHEAST HAYNES - APACHE 9 No. 1

NOT TO SCALE