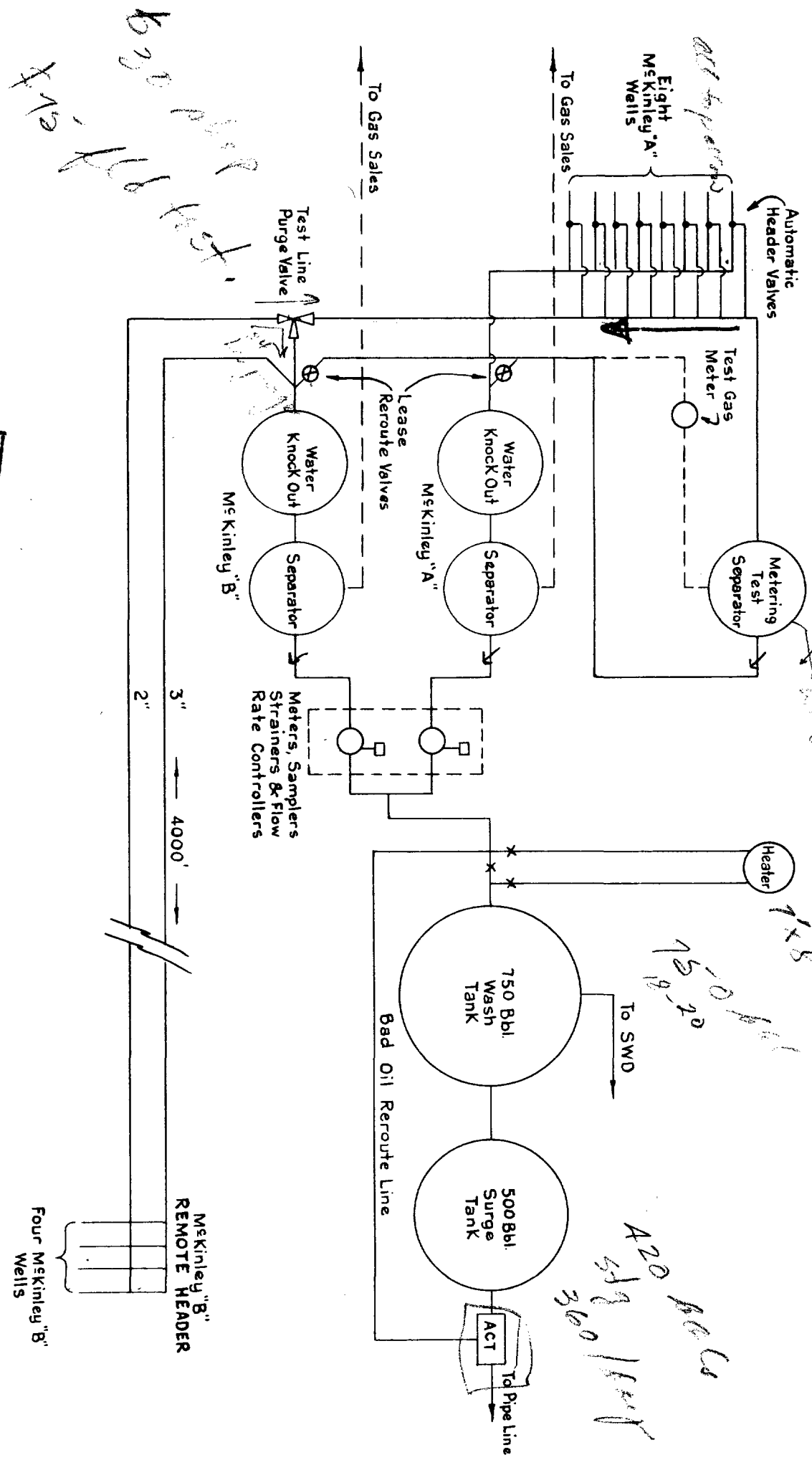


# McKINLEY "A" & "B" BATTERY

SHELL EXHIBIT 2  
CASE 2218



**BEFORE EXAMINER UTZ**  
OIL CONSERVATION COMMISSION  
CASE NO. 2218  
EXHIBIT NO. 2

SHELL OIL COMPANY  
McKINLEY "A" & "B"  
CONSOLIDATED BATTERY  
HOBBS FIELD  
Date: R.L.S. Date: 1-30-61 Drawn by: J.F.J.



BILL OF MATERIAL

- 2" Viking pump, Model K-4288, gear ratio 4.19:1 w/3 HP, 440/220 volt, 60 cycle, three-phase, 1800 RPM, drip-proof motor all skid-mounted (to be supplied by Shell Oil Company).
- 2" plastic coated, inline probe w/monitor, range 0-3½ (Gulf Research & Development Company Patent).
- 1-1/2" Combination Air Eliminator and Strainer w/1/4" mesh screen.
- 1-1/2" Model T-6 A.O. Smith positive displacement meter w/standard trim, 125 psi, flanged ends, cast iron body complete with No. 109 horizontal non-reset counter to register barrels. Type T electric trans-meter geared for 1 pulse per 4 barrels throughput, automatic temperature compensator for 32°F API.
- BS&B Type 18 2-inch back pressure valve (with soft seat and spring force to close) set at 25 psi, or equivalent.
- 2-inch flanged plug valve (equipped with apparatus for pipeline seal).
- 2" Garrett Type TP0-RL, 3-way, 2-position gas operated motor valve c/w solenoid.
- 0-100# pressure gauge and gauge snubber.
- 3" x 2" screwed swage with 1-inch collar.
- 0-180° angle type mercury thermometer in 1/2-inch thermowell.
- 1-inch collar.
- 3-inch Everitte part "A" coupler, female thread w/dust cap.

NOTES

- All equipment to be skid-mounted and adequately braced. (Do not cover top of skid w/sheet steel.)
- Mount weather proof electrical components on metal rack at least 2 feet above skid.
- Install valve and drain piping on meter case and air-eliminator. Also install 1/2-inch check valve on air-eliminator.
- Do not mount control box over pump and motor.
- Overall dimensions given on skid are only approximate. Leave sufficient space between components so they can be easily removed for maintenance.
- Make provision to seal the meter from the meter case through the meter counter with pipeline wire seal.

SHELL OIL COMPANY  
ROSWELL DIVISION

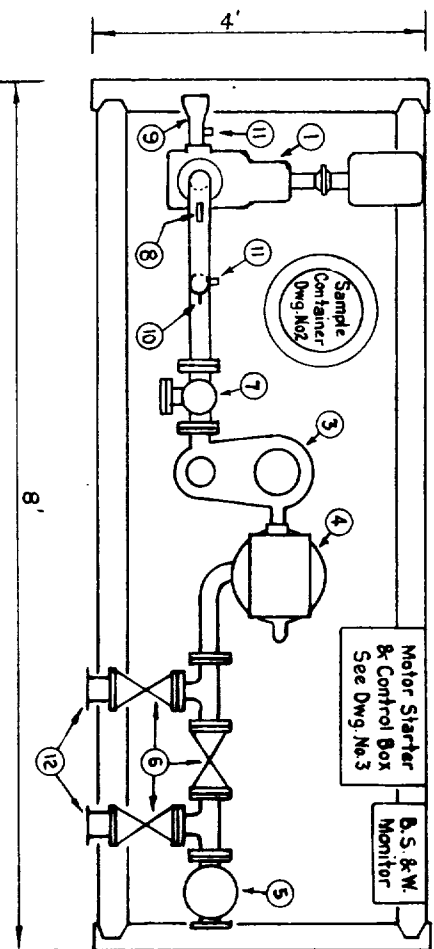
SKID MOUNTED ACT UNIT

McKINLEY "A" 8" B" LEASE, HOBBS FIELD

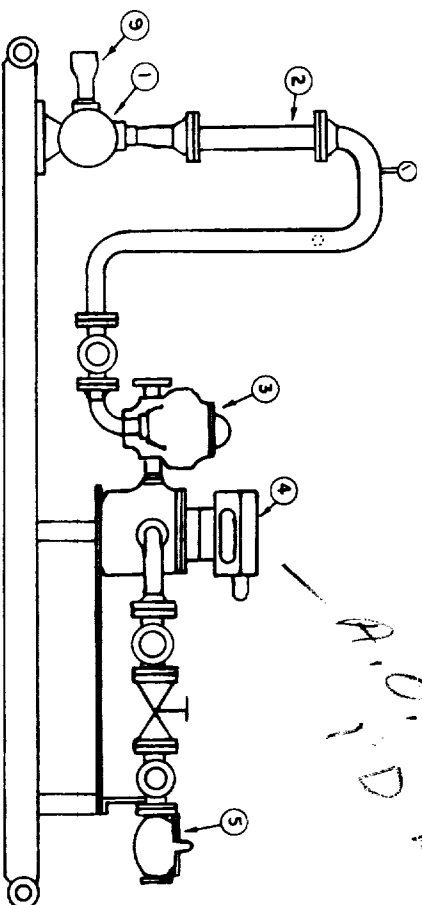
Drawn by J F J      Date: R L S      Drawing No 1

Date: 2-7-61

SHELL EXHIBIT 4      CASE 2218



*Get 8 measurements*



*A.O. Smith*

*Shell Oil Co.*

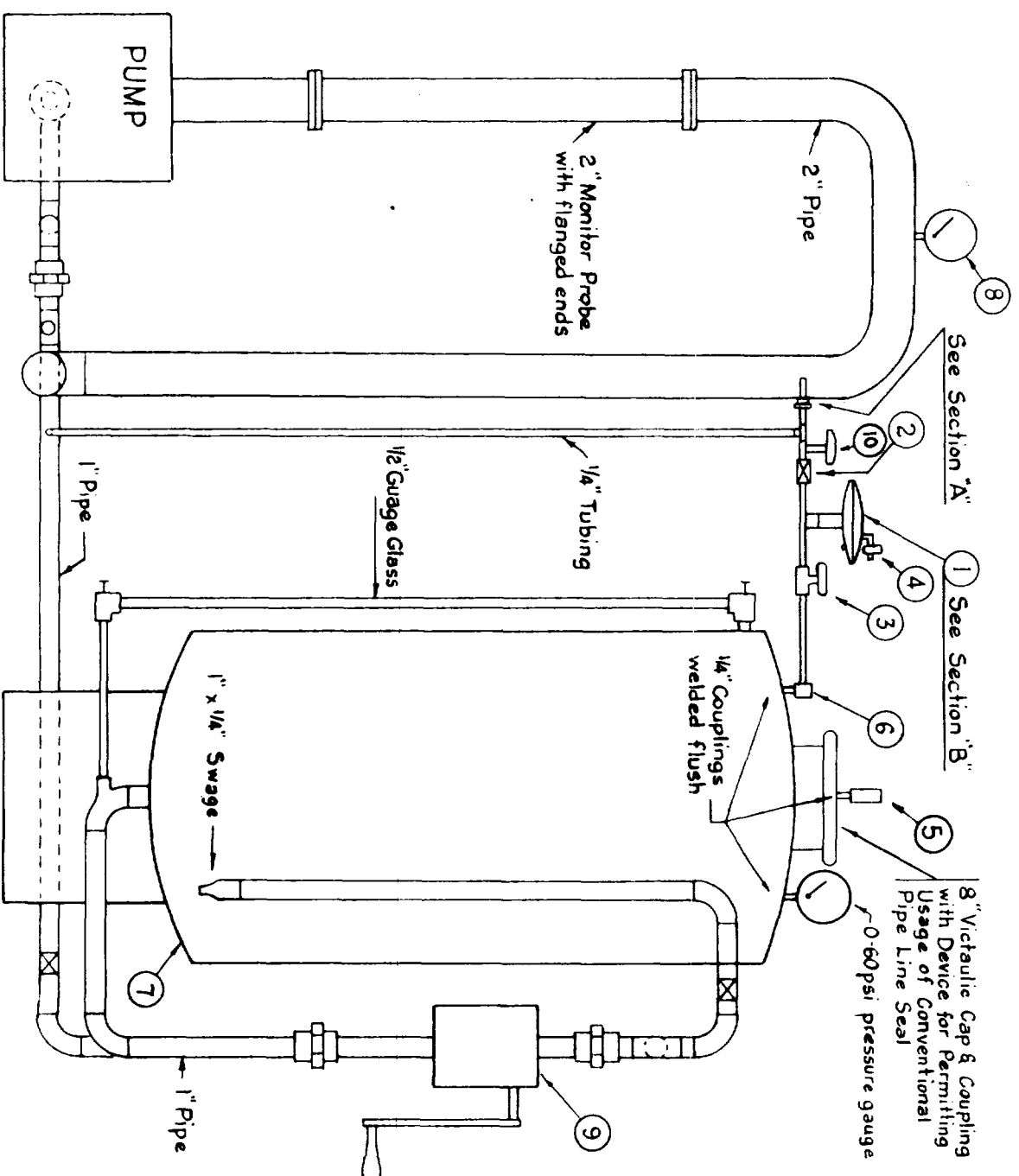
*20' x 10' x 4'*  
*800*



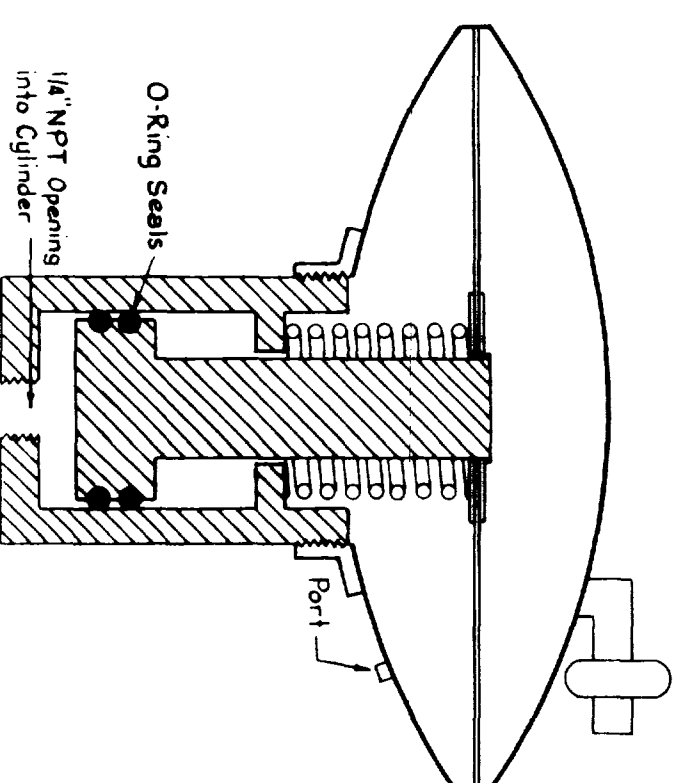
- NOTES:

- 
- SECTION "A-A"
- 2" Pipe
- 45°
- 1" NPT
- 1/4" NPT
- 1/4" Steel Tube brazed in Reducer

SECTION "A"



SECTION "B"



SHELL OIL COMPANY ROSWELL DIVISION
SKID MOUNTED ACT UNIT SAMPLER DETAIL
MEKINLEY "A" & "B" LEASE,      HOBBS FIELD

Drawn by: J.F.J.      Date: 2-7-61      Drawing No. 2  
Data: R.L.S.