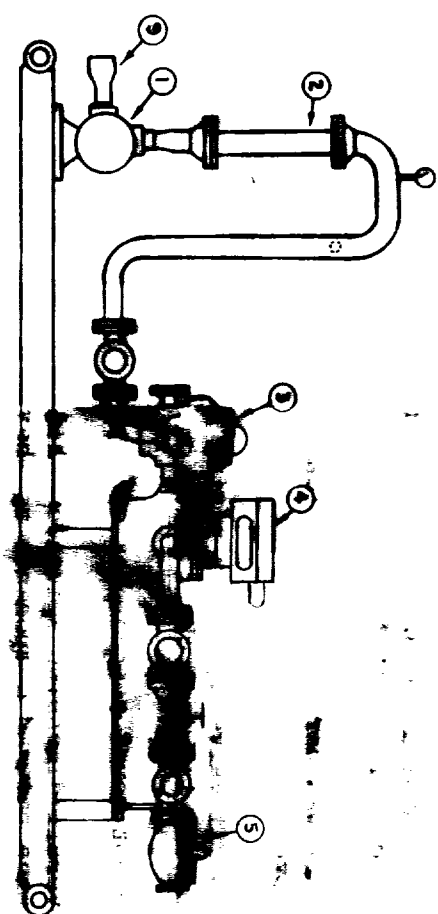
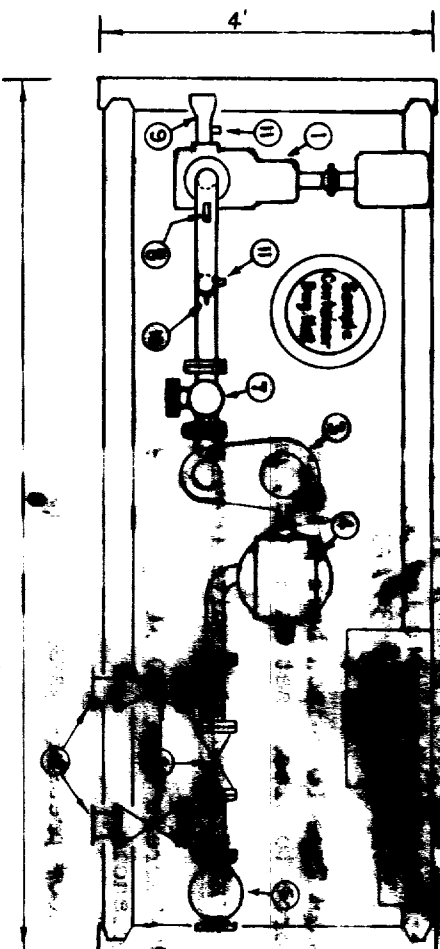


ILLEGIBLE



BILL OF MATERIAL

1. 2" Viking pump, Model K-4288, gear ratio 4.19:1 w/3 HP, 440/220 volt, 60 cycle, three-phase, 1800 RPM, drip proof motor all skid-mounted (to be supplied by Shell Oil Company).
2. 2" plastic coated, inline probe w/monitor, range 0-3% (Gulf Research & Development Company Patent).
3. 1-1/2" Combination Air Eliminator and Strainer w/1/4" mesh screen.
4. 1-1/2" Model T-6 A.O. Smith positive displacement meter w/standard trim, 125 psi, flanged end, cast iron body complete with No. 109 horizontal register barrels. Type T electric tripping mechanism, 1/2" per 4 barrels throughput, automatic temperature compensation.
5. BSA 18 2-inch back pressure valve (with soft seat and spring forced to close) set at 25 psi or equivalent.
6. 2" gas-operated valve (equipped with apparatus for pipeline seal).
7. 2" Garrett 3-way, 3-way, 2-position gas operated motor valve c/w solenoid.
8. 0-100# pressure gauge and gauge snubber.
9. 3" x 2" screwed swage with 1-inch collar.
10. 0-180° angle type mercury thermometer in 1/2-inch thermowell.
11. 1-inch collar.
12. 3-inch Everette part "A" coupler, female thread w/dust cap.

NOTES

1. All equipment to be skid-mounted and adequately braced. (Do not cover top of skid w/sheet steel.)
2. Mount weather proof electrical components on metal rack at least 2 feet above skid.
3. Install valve and drain lines to meter case and air-eliminator. Also install check valve on air-eliminator.
4. Do not connect air line to pump and motor.
5. Overall dimensions given are only approximate. Leave sufficient space between components so they can be easily removed for maintenance.
6. Make provision to seal the meter from the meter case through the meter counter with pipeline wire seal.

SHELL OIL COMPANY  
MOSWELL DIVISION

SKID MOUNTED ACT UNIT

LIVINGSTON LEASE

Drawn by: J.F.U. Date: R.L.S. Drawing No. 1

Date: 2-7-61

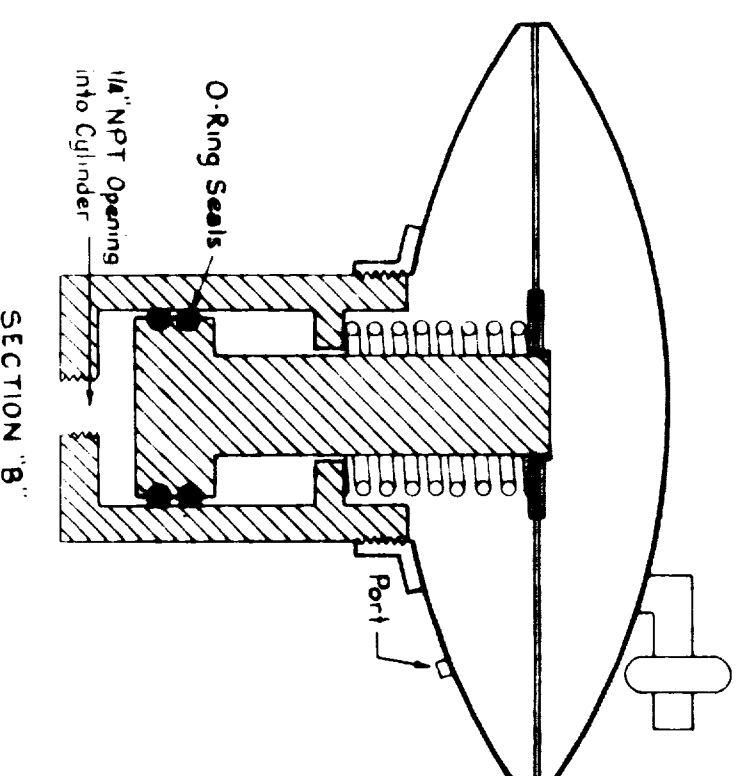
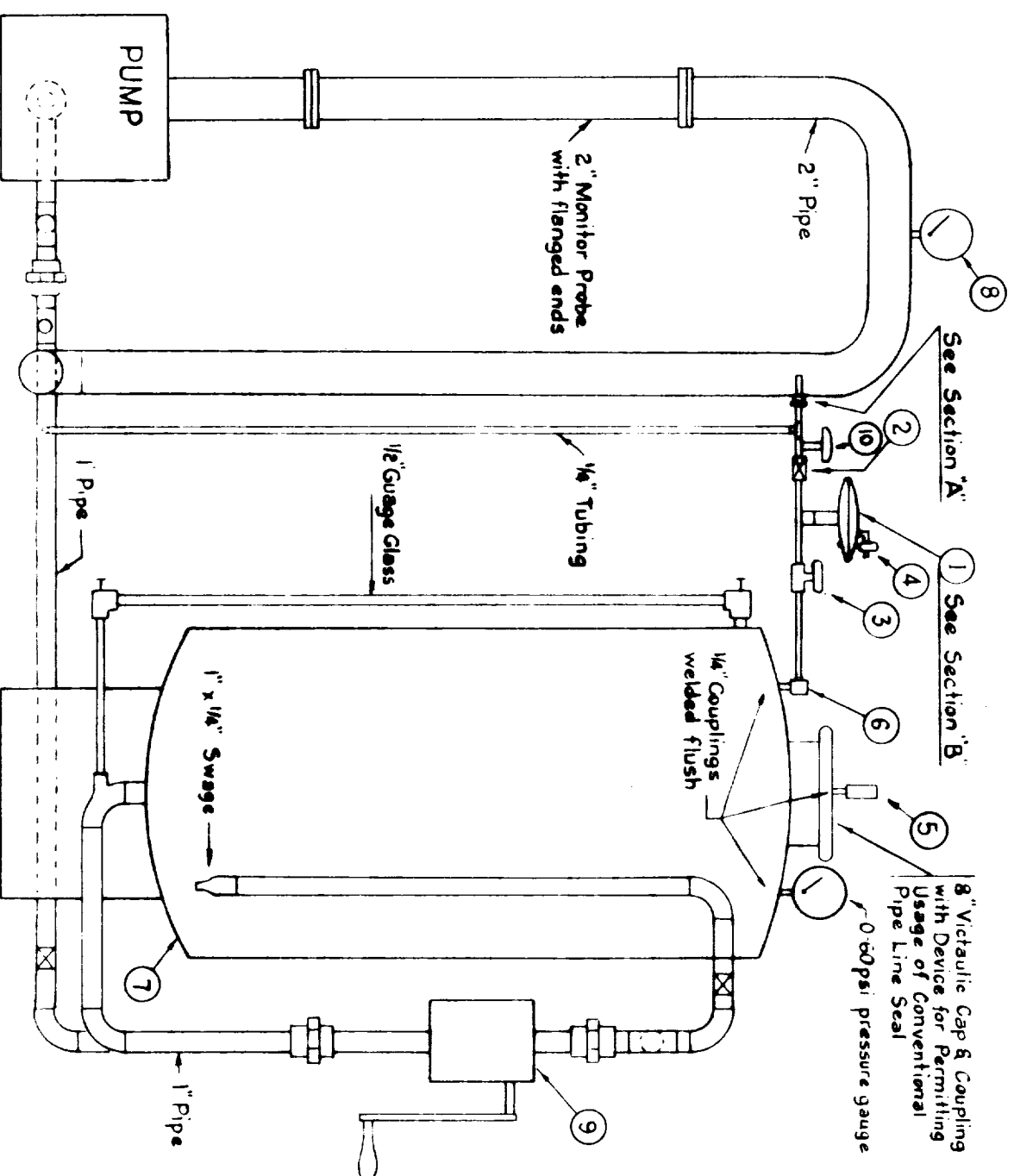
SHELL EXHIBIT 9 CASE 2320



- NOTES:

- 
- SECTION "A-A"
- 2" Pipe
- 45°
- 1" NPT
- 1/4" Steel Tube brazed in Reducer
- 1 1/2" NPT

SECTION 'A'



SECTION "B"

ILLEGIBLE

LIVINGSTON LEASE

Drawn by: J.F.J.      Date 2-7-61      Drawing No 2  
Data: R.L.S.