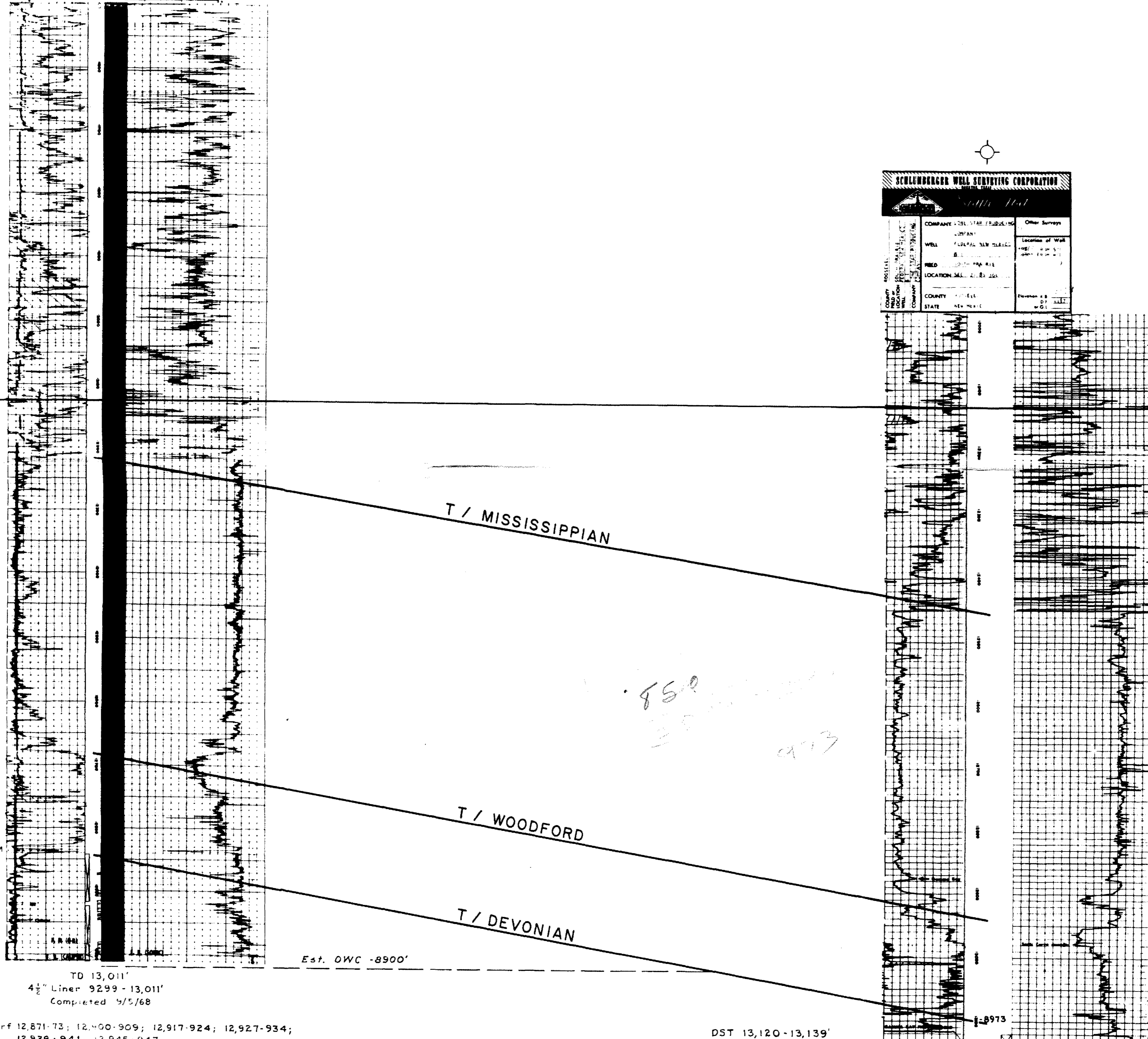


SCHLUMBERGER BOREHOLE COMPENSATED SONIC LOG GAMMA RAY

COMPANY	DELSTAR DRILLING
WELL	W-1000
FIELD	W-1000
COUNTY	DEWEE
STATE	NEW MEXICO
LOCATION	W-1000

SCHLUMBERGER WELL SORTING CORPORATION

COMPANY	DELSTAR DRILLING
WELL	W-1000
FIELD	W-1000
COUNTY	DEWEE
STATE	NEW MEXICO



A

A'

-8,000'

-8,000'

T / MISSISSIPPIAN

T / WOODFORD

T / DEVONIAN

850
30'
973

Est. OWC -8900'

DST 12,846-12,918'
OP 107 mins. Rec 1270' HO & GCM
30" ISIP 884# FP 265-468#
180" FSIP 1160#

DST 12,923-13,011'
OP 142 mins. Rec 10,560' Oil
(76.8 Bbls)
92" ISIP 4396# FP 699-3630#
120" FSIP 4491#
(Extrapolated Pressure
Equals 4925#)

TD 13,011'
4 1/2" Liner 9299-13,011'
Completed 9/5/68
Perf 12,871-73; 12,400-909; 12,917-924; 12,927-934;
12,938-941; 12,945-947
Acid. w/3500 gals.
IPF 208 BOPD Gas TSTM
10/3/68 Perf 12,983-997

DST 13,120-13,139'
OP 3 hrs. 7 mins. Rec 748'
WCM + 1964' MCWB +
654' G & XWCM + 4114' SGCXW
45" ISIP 5024#(Static)
FP 1225 - 3824#
60" FSIP 5024#(Static)

BEFORE EXAMINER UTZ
OIL CONSERVATION COMMISSION
EXHIBIT NO. 2
CASE NO. 3881

BEFORE EXAMINER UTZ
OIL CONSERVATION COMMISSION
EXHIBIT NO. 2
CASE NO. 3881

SOUTH PRAIRIE DEVONIAN
CROSS SECTION A - A'

VERTICAL SCALE : 1" = 100'
HORIZONTAL SCALE : 1" = 300'

J. M. HUBER CORPORATION