

G-X-2 BEST EFFORTS DELIVERIES TO CALIFORNIA

(Volumes in MCF at 14.73# p.b.)

February through July, 1967 (181 days)

	<u>Total Volume</u>	<u>M²CF/D</u>
So. California	11,424,608	63.1
P G & E	<u>7,106,742</u>	<u>39.3</u>
Total	18,531,350	102.4

August, 1967 through January, 1968 (184 days)

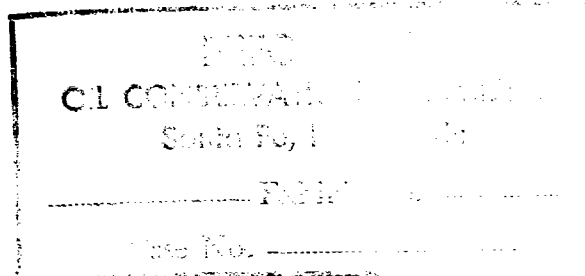
So. California	10,754,761	58.4
P G & E	<u>10,866,455</u>	<u>59.1</u>
Total	21,621,216	117.5

February through July, 1968 (182 days)

So. California	18,972,589	104.2
P G & E	<u>12,587,423</u>	<u>69.2</u>
Total	31,560,012	173.4

August, 1968 through January, 1969 (184 days)

So. California	11,137,227	60.5
P G & E	<u>10,944,329</u>	<u>59.5</u>
Total	22,081,556	120.0



February 19, 1969

TEMPORARY SALE TO TRANSWESTERN PIPELINE COMPANY

Case No. 3834
Exhibit No. 7-R

	<u>Minimum Day</u>	<u>Maximum Day</u>	<u>Monthly Average Day</u>	<u>Actual Average Day</u>	<u>Total Deliveries</u>
Letter Agreement dated June 28, 1968 (150.0 M ² CF/D Max. Day)					
July, 1968 (First Delivery - July 3, 1968)	58.3 M ² CF	117.0 M ² CF	78.6 M ² CF	84.0 M ² CF (29 days)	2,435,829 MCF
August, 1968 (Terminated - August 25, 1968)	40.0 M ² CF (est.)	120.0 M ² CF (est.)	70.0 M ² CF (est.)	87.0 M ² CF (25 days) (est.) 101.3 M ² CF (Aug. 1 - Aug. 6, 1968)	2,170,000 MCF (est.)

Letter Agreement dated June 28, 1968 (150.0 M²CF/D Max. Day)

August, 1968	4.3 M ² CF	123.8 M ² CF	60.8 M ² CF	60.8 M ² CF (31 days)	1,885,130 MCF
September, 1968	17.8 M ² CF	98.5 M ² CF	43.0 M ² CF	43.0 M ² CF (30 days)	1,289,780 MCF
October, 1968 (Terminated - October 16, 1968)	.8 M ² CF	55.9 M ² CF	6.6 M ² CF	12.8 M ² CF (16 days)	204,997 MCF

Letter Agreement dated November 20, 1968 (30.0 M²CF/D Max. Day)

November, 1968 (First Delivery - November 20, 1968)	17.3 M ² CF	32.5 M ² CF	9.3 M ² CF	25.5 M ² CF (11 days)	280,440 MCF
December, 1968 (Terminated - December 6, 1968)	21.6 M ² CF	31.1 M ² CF	3.5 M ² CF	18.2 M ² CF (6 days)	109,011 MCF

Letter Agreement dated January 27, 1969 (30.0 M²CF/D Max. Day)

January, 1969 (First Delivery - January 27, 1969)	16.5 M ² CF	28.8 M ² CF	3.6 M ² CF	22.1 M ² CF (5 days)	110,627 MCF
February, 1969 (Terminated - February 7, 1969)	5.1 M ² CF (est.)	25.0 M ² CF (est.)	2.0 M ² CF (est.)	7.9 M ² CF (7 days) (est.)	55,000 MCF (est.)

Grand Total July, 1968 through February, 1969

6,370,814 MCF

February 19, 1969