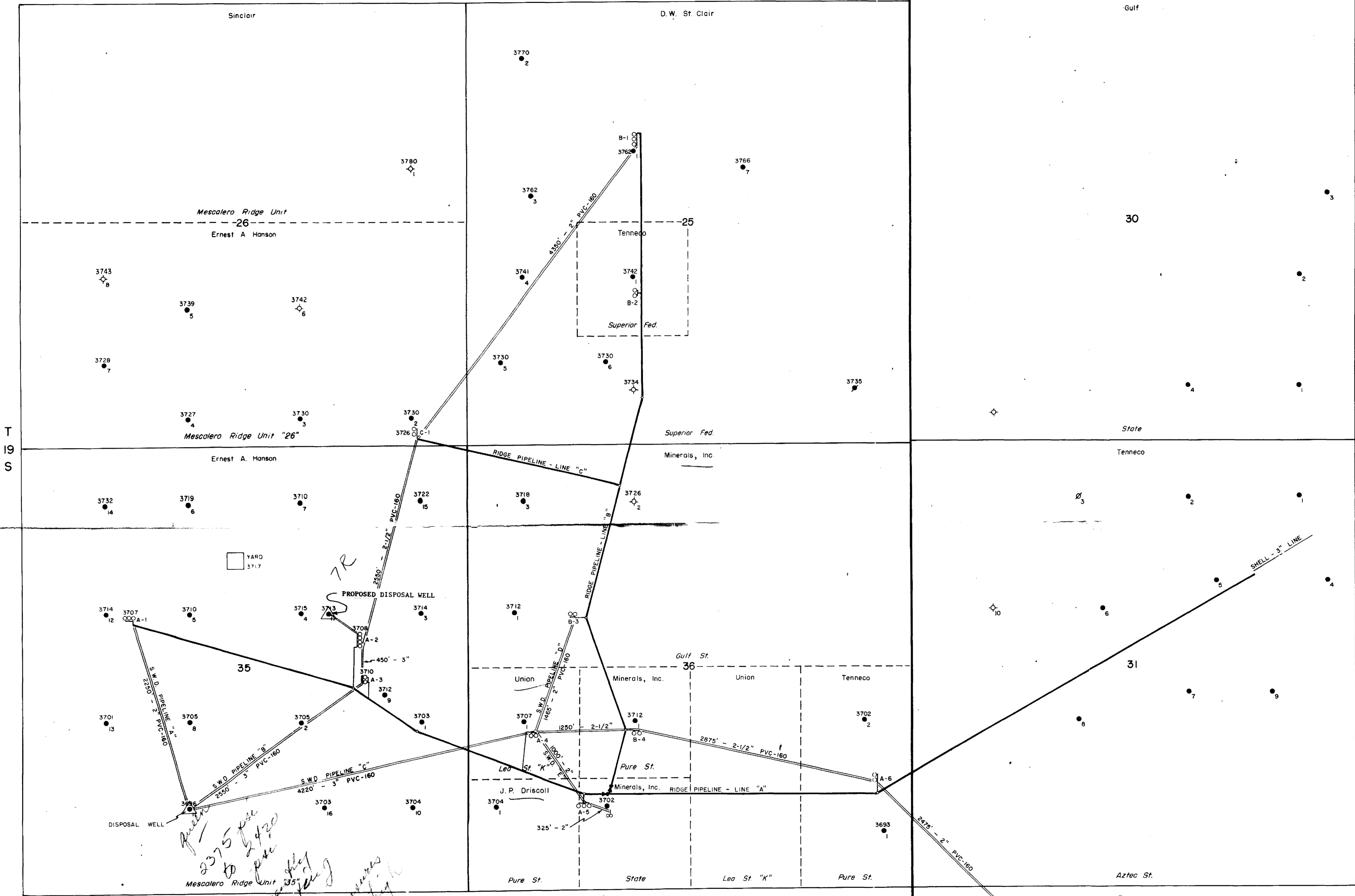


R-34-E

R-35-E



HANSON OIL CORPORATION
 ERNEST A. HANSON
 P.O. Box 1515
 Roswell, New Mexico

LEGEND
 3715 ELEVATION
 ● WELL NUMBER
 3715 ELEVATION
 ○ BATTERY NUMBER

initial volume
 950 R/W PD
 up to 2450 psi

MESCALERO RIDGE UNIT
 SALT WATER DISPOSAL SYSTEM
 T-19-S, R-34-E, N.M.P.M.
 LEA COUNTY, NEW MEXICO

SCALE: 1" = 600'

BEFORE EXAMINER NUTTER
 OIL CONSERVATION COMMISSION
 Hanson EXHIBIT NO. 55
 CASE NO. 4547