

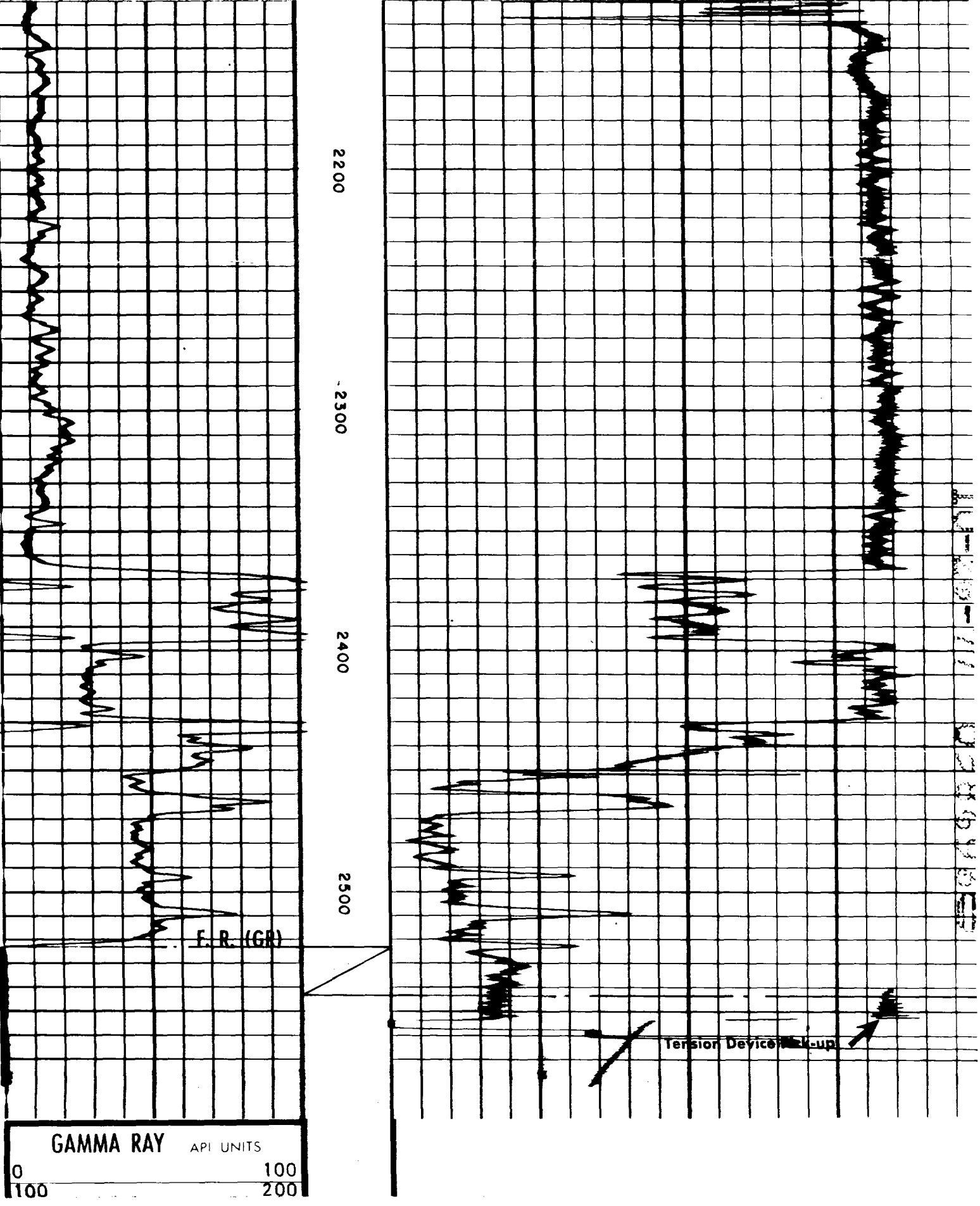
Schlumberger **DUPLICATE COMPENSATED SONIC LOG**

COUNTY EDDY
 FIELD WILDCAT
 LOCATION SANDERS #1
 COMPANY ORLA PETCO INC.

COMPANY ORLA PETCO INC.
 WELL SANDERS #1
 FIELD WILDCAT
 COUNTY EDDY STATE NEW MEXICO
 LOCATION 1980' FNL & 1980' FEL
 API SERIAL NO. 6 SEC 23-S TWP 28-E RANGE
 Other Services:

Permanent Datum: Gal. 8 5/8" 2 Ft. Above Perm. Datum Elev.: 3023
 Log Measured From TOP OF 8 3/8"
 Drilling Measured From TOP OF 8 3/8" Elev.: 3025
 DF 3023
 GL 3023

Date	10-21-77
Run No.	ONE
Depth-Driller	2555
Depth-Logger (Schl.)	2554
Btm. Log Interval	2552
Top Log Interval	SURF
Casing-Driller	8 5/8 @ 366
Casing-Logger	@
Bit Size	6 3/4 (2555-2435) 8" (2435-366)
Type Fluid in Hole	WATER
Dens. Visc.	
pH	
Fluid Loss	
Source of Sample	
Rm @ Meas. Temp.	@ °F @ °F @ °F @ °F
Rmf @ Meas. Temp.	@ °F @ °F @ °F @ °F
Rmc @ Meas. Temp.	@ °F @ °F @ °F @ °F
Source: Rmf Rmc	
Rm @ BHT	@ °F @ °F @ °F @ °F
Circulation Stopped	
Logger on Bottom	
Max. Rec. Temp.	90 °F
Equip. Location	7782 HOBBS
Recorded By	BRUTON
Witnessed By Mr.	KENNEDY



GAMMA RAY API UNITS
 0 100 200