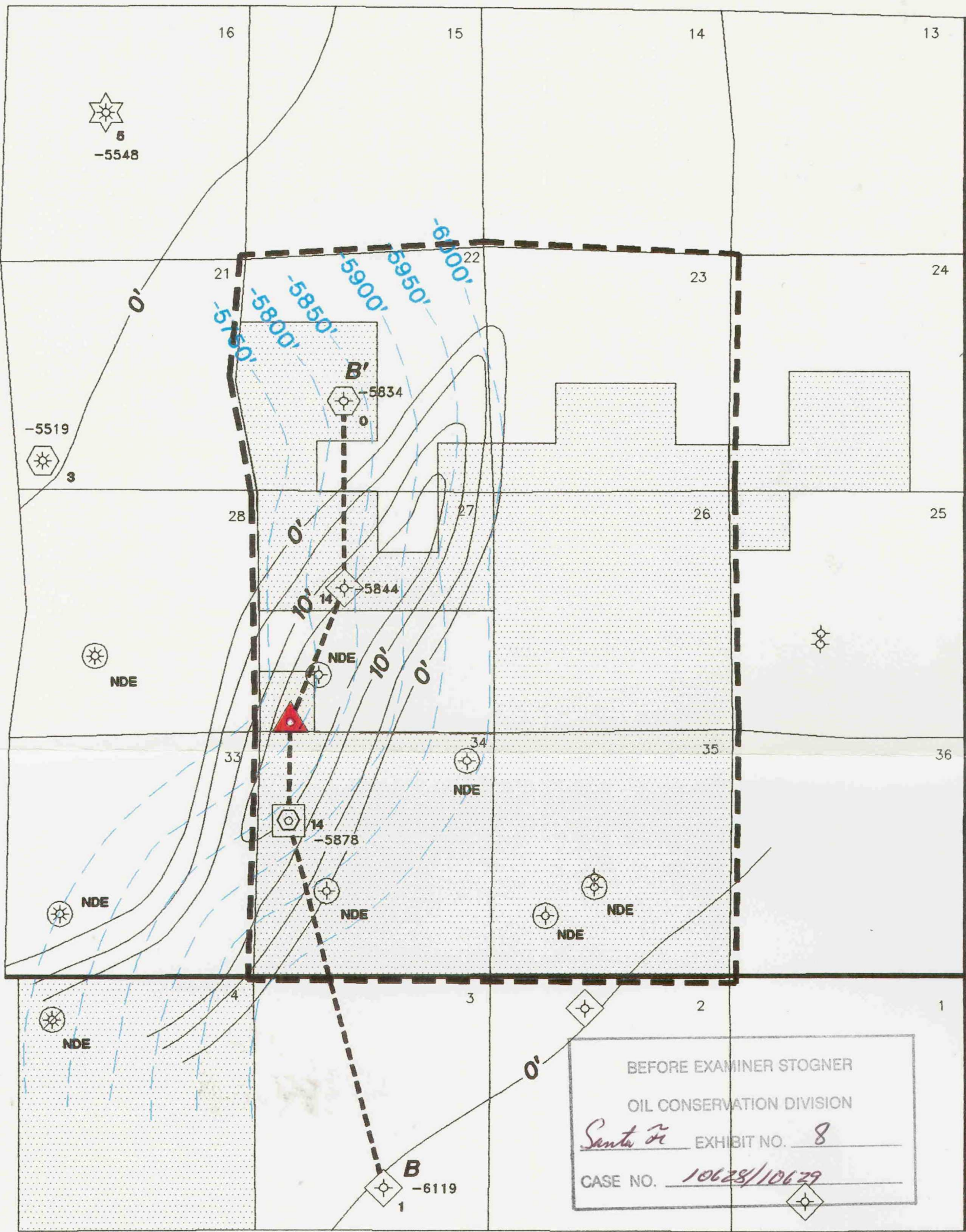



R 24 E



T 21 S

- SFEOP,LP, NESTE, NORTH CENTRAL LEASEHOLD
- SFEOP,LP, NESTE, NORTH CENTRAL A.M.I.
- SFEOP,LP RIGHTHAND CANYON FED. *34* #1
- SFEOP,LP ROCKY TOP FED. *27* #1 PROPOSED LOCATION
- MORROW PENETRATION - NO TEST OF BASAL UPPER MORROW SAND
- CISCO CANYON TEST - NOT DEEP ENOUGH FOR MORROW
- MORROW PENETRATION - GAS SHOW IN DST OF BASAL UPPER MORROW SAND
- MORROW PENETRATION - BASAL UPPER MORROW SAND COMPLETION
- NDE NOT DEEP ENOUGH


Santa Fe Energy Operating Partners, LP.
 CENTRAL DIVISION
 MIDLAND, TEXAS

CARLSBAD AREA
EAST INDIAN HILLS AREA
 EDDY COUNTY, NEW MEXICO

ISOPACH MAP
NET POROUS SAND $\phi_{CP} > 7\%$
BASAL UPPER MORROW SAND

Geol. By: G. Davis C.I.: 5'
 Scale: 1"=2500' Date: 12-1-92

EINDHEAR.DWG File: 3-T-3

BEFORE EXAMINER STOGNER
 OIL CONSERVATION DIVISION
Santa Fe EXHIBIT NO. 8
 CASE NO. 10628/10629