

Oxy USA Inc.
State DW #1

Oxy USA Inc.
State DW #6

Chevron USA Inc.
(Gulf)
Lea XA State #4

Seely Oil Co.
(Richardson & Bass)
Bass State #1

Seely Oil Co.
(General Operating Co.)
Amoco State #1

Seely Oil Co.
(Richardson & Bass)
Bass State #2

Seely Oil Co.
(General Operating Co.)
Sante Fe State #1

Seely Oil Co.
(General Operating Co.)
State BC #1

Seely Oil Co.
(General Operating Co.)
Rhodes State #1

Seely Oil Company
(Harvey E. Yates)
State HS #2

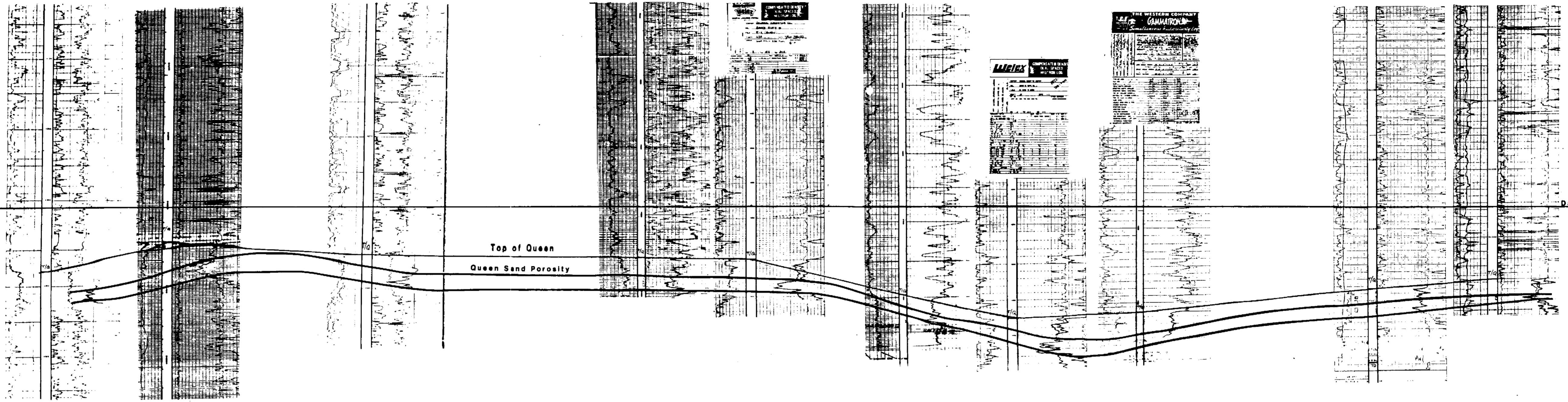
Sect. 12j Sect. 12i Sect. 7n Sect. 7p Sect. 8m Sect. 8n Sect. 17c Sect. 8o Sect. 9m Sect. 9L

1330' 2200' 3000' 1000' 1860' 1000' 1400' 2600' 1330'

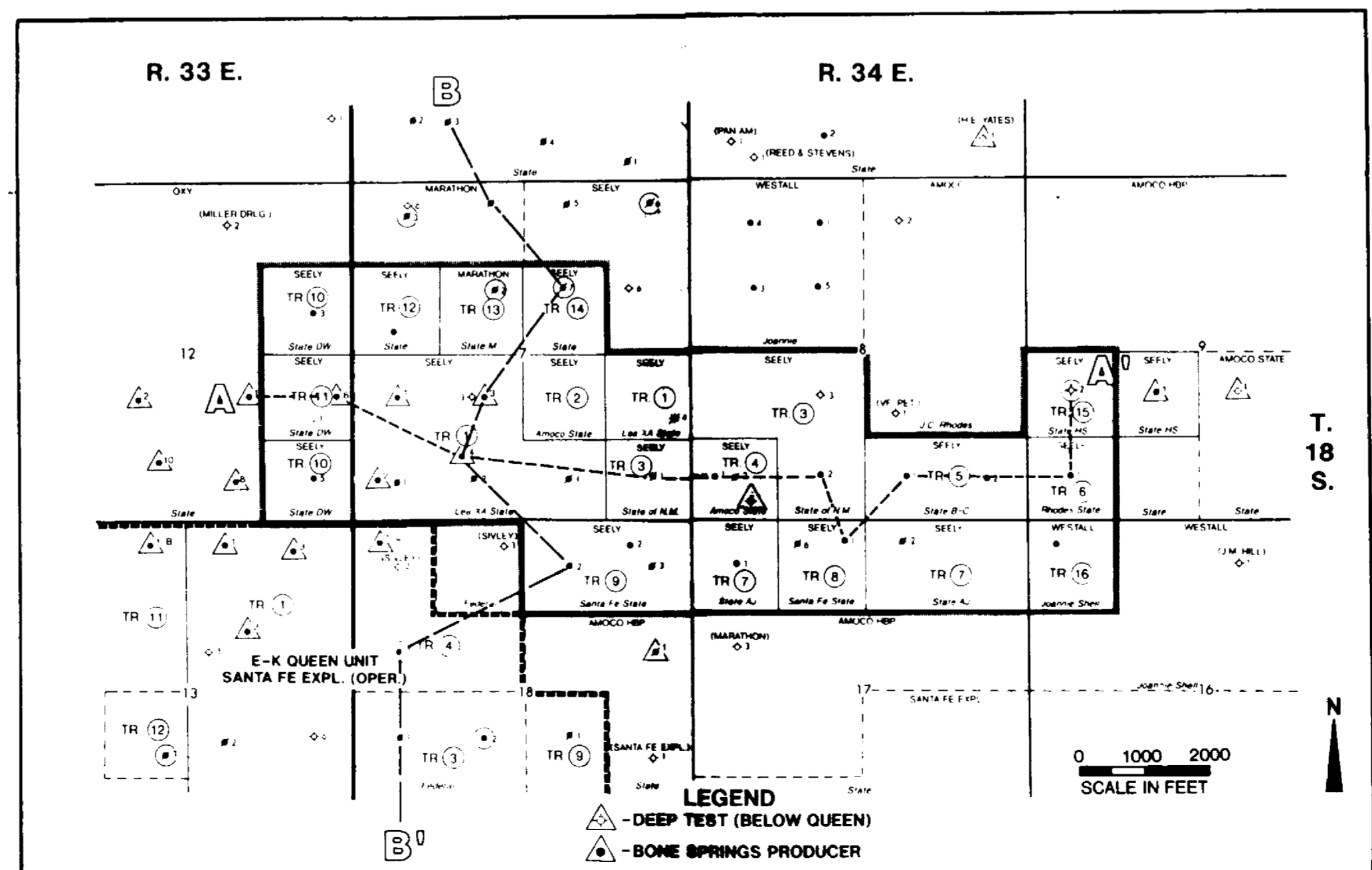
A

A'

Datum -200'



T.D. 11,094 4-17-84	T.D. 8,914 9-18-84	T.D. 9,600 12-11-84	T.D. 4,439 2-1-56	T.D. 4,800 8-29-83	T.D. 4,477 6-28-56	T.D. 4,820 11-8-85	T.D. 4,456 2-27-57	T.D. 4,482 8-27-81	T.D. 9,000 2-8-86 D&A 0WWO 9-3-87
Compl./Bone Springs	Compl./Bone Springs	Compl./Bone Springs	Queen Sand IPF 480 BOPD F 10/13	Queen Sand IPP 44/22w F 30/43	Queen Sand IPF 384 A/500 F/10/10	Queen Sand IPP 10/15w F/20/32	Queen Sand IPF 279 A/500 F/15/15	Queen Sand IPP 15/9w A/2,800 F/25/34	Queen Wtr. Disp. Well Perf. 4,380-85 F 15/30



Extra
FIGURE 6
See Exhibit #8

Seely Oil Company

CENTRAL E.K. QUEEN UNIT
E.K. YATES SEVEN RIVERS QUEEN FIELD
Lea County, New Mexico

WEST-EAST STRUCTURAL
CROSS SECTION A-A'