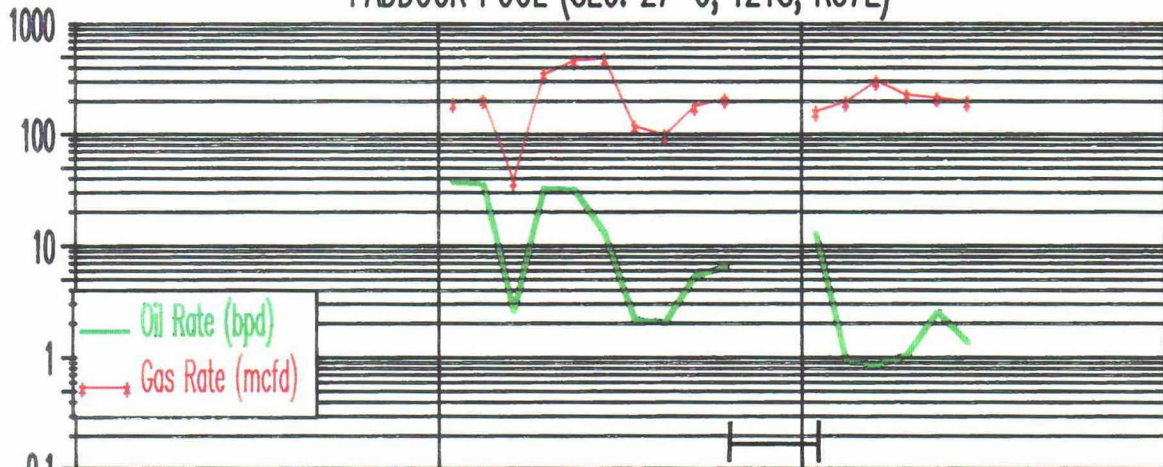


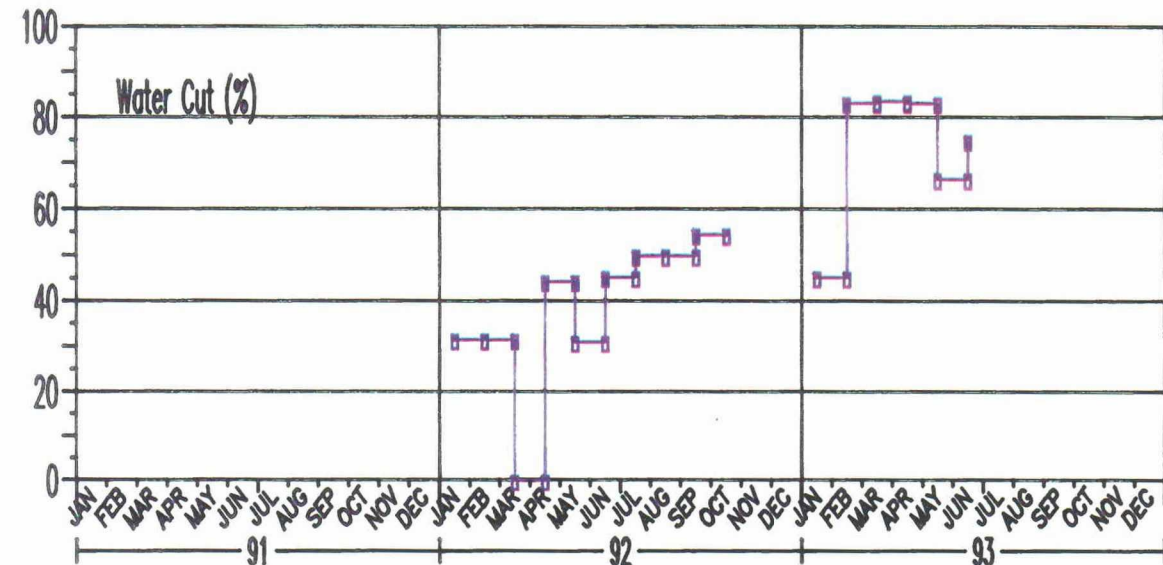
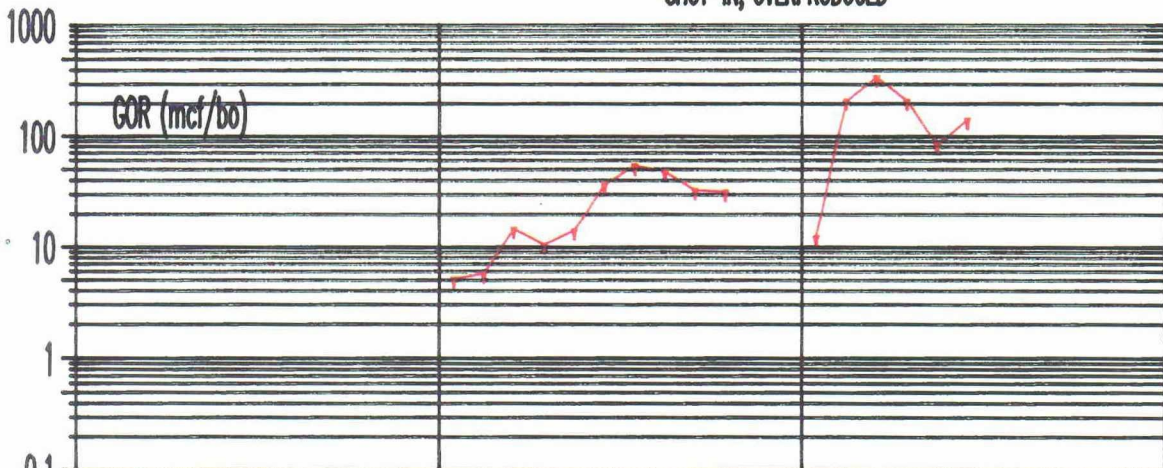
CONOCO INC.

WELL: LOCKHART A 27 7

PADDOCK POOL (SEC. 27-C, T21S, R37E)



SHUT-IN, OVERPRODUCED



NO. 7 PADDOCK HISTORY

SEP 1991 : PERF PADDOCK C 5239'-5270'
IPF 72 BOPD, 550 MCFD, 7639 GOR 119 BWPD
100# FTP, 30/64" CHOKE

NOV 1992 : SHUT-IN, OVERPRODUCED

JAN 1993 : RETURNED TO PRODUCTION

AUG 1993 : FLWG 1 BOPD, 186 MCFD, 3 BWPD, 400#, 17/64" CHOKE

BEFORE EXAMINER STOGNER
OIL CONSERVATION DIVISION

EXHIBIT NO. **14**
CASE NO.: 10830
Submitted by: Conoco Inc.
Hearing Date: Sept. 23, 1993