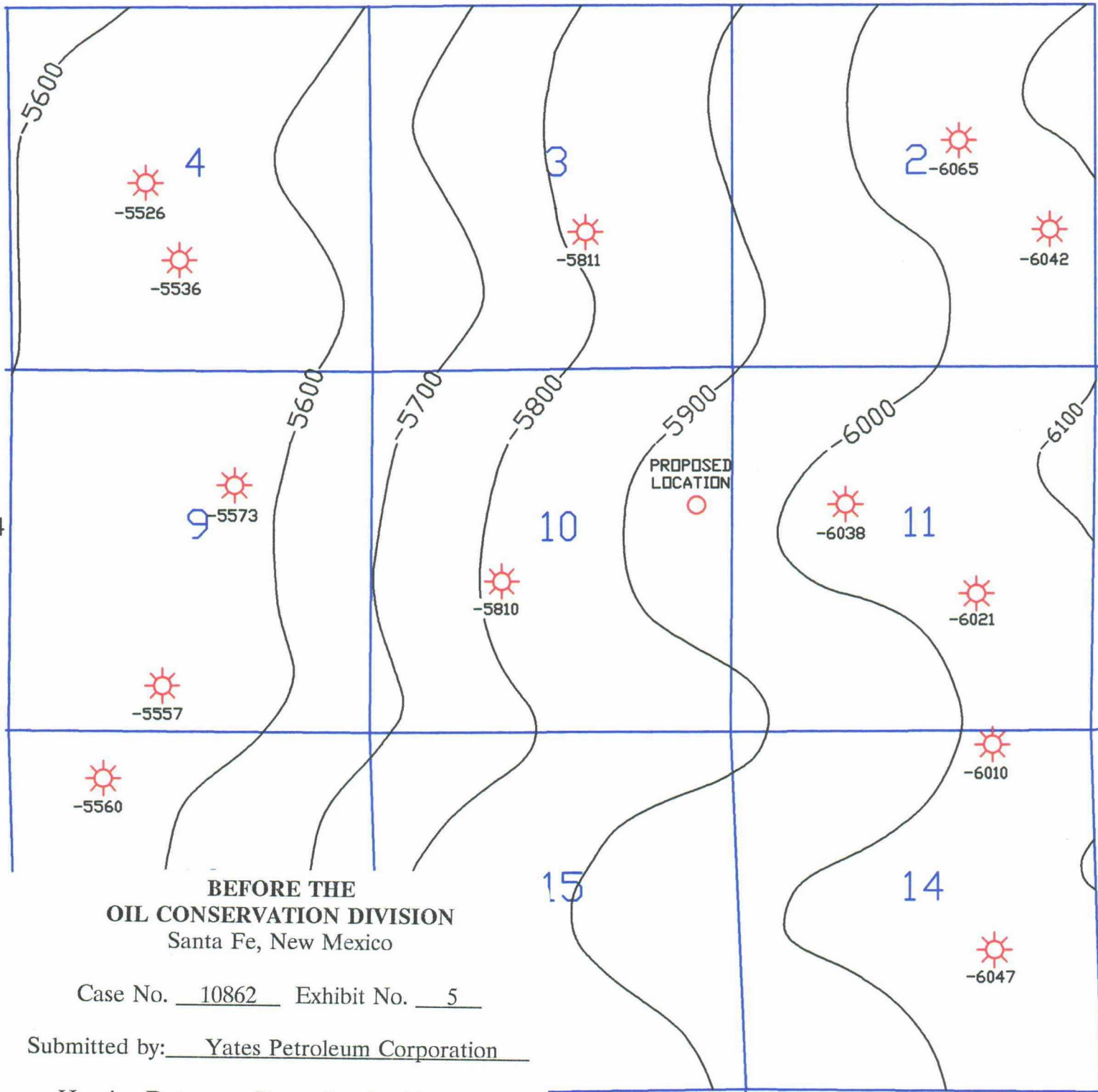


R24E



**BEFORE THE
OIL CONSERVATION DIVISION**
Santa Fe, New Mexico

Case No. 10862 Exhibit No. 5

Submitted by: Yates Petroleum Corporation

Hearing Date: December 2, 1993



12/93 (VM)
DRAFT\A93034A

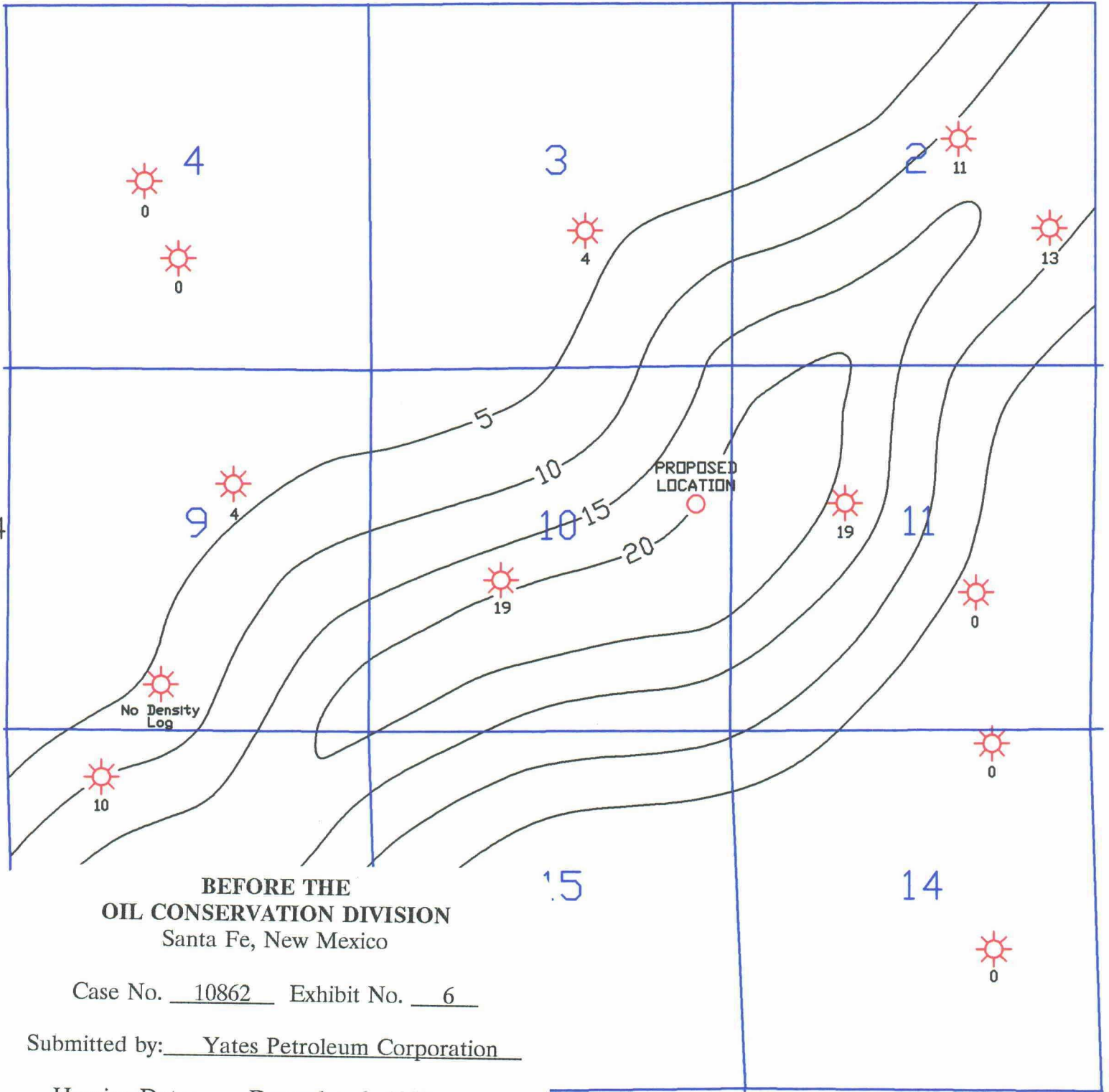
STRUCTURE MAP
REDBONE "BP" FED. #2
TOP OF MORROW CLASTICS

GEOLOGIST: BRENT MAY

SCALE: 1"=2000'

R24E

T
24
S



**BEFORE THE
OIL CONSERVATION DIVISION**
Santa Fe, New Mexico

Case No. 10862 Exhibit No. 6

Submitted by: Yates Petroleum Corporation

Hearing Date: December 2, 1993

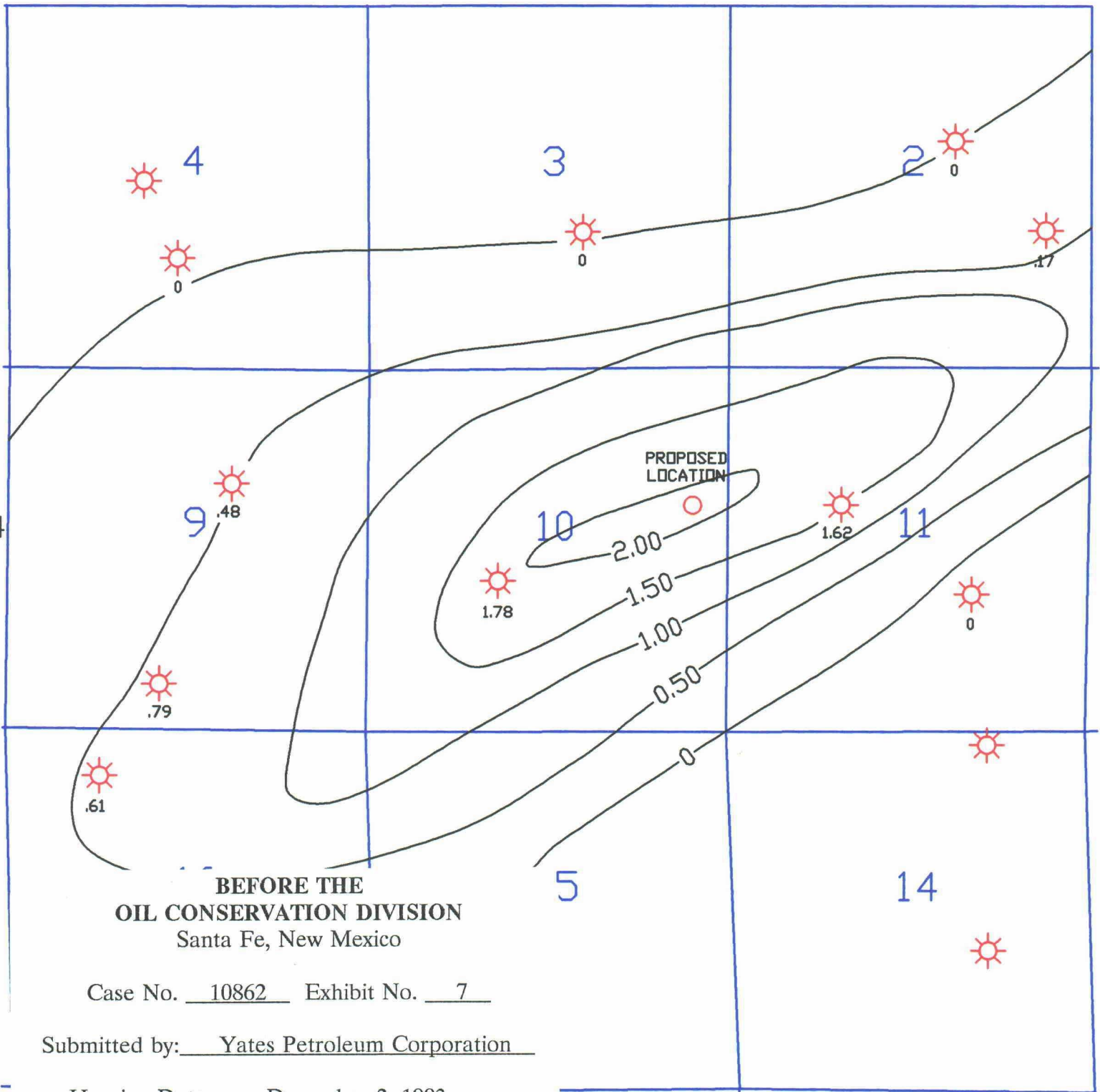


12/93 (VM)
DRAFT\A93034B

ISOPACH MAP
REDBONE "BP" FED. #2
MONCRIEF SAND
DENSITY POROSITY \geq 10%

GEOLOGIST: BRENT MAY

SCALE: 1"=2000'



**BEFORE THE
OIL CONSERVATION DIVISION**
Santa Fe, New Mexico

Case No. 10862 Exhibit No. 7

Submitted by: Yates Petroleum Corporation

Hearing Date: December 2, 1993



12/93 (VM)
DRAFT\A93034C

SgøH MAP
REDBONE "BP" FED. #2
MONCRIEF SAND

ENG: PINSON McWHORTER

SCALE: 1"=2000'

Reserves & Economics

Moncrief Sand

N/2 Section 10

T 24S R 24E

Volumetric Estimate of Current Reserves

In N/2 of Section 10 T 24S R 24E:

P = 2174 psi (@ -5700' Subsea) Current average
T = 160° F
Bg = .0072 ft³/SCF

Sg Ø HA = 378 ac-ft (from isopach)
Current GIP = 2290 MMCF
Current Recoverable Gas = 1950 MMCF (Recovery Factor = .85)

Economic Analysis:

Investment 610 M\$
Rate of Return 86%
Profit 1424 M\$
Present Worth Profit 916 M\$ (@ 10% discount rate)

BEFORE THE
OIL CONSERVATION DIVISION
Santa Fe, New Mexico

Case No. 10862 Exhibit No. 8

Submitted by: Yates Petroleum Corporation

Hearing Date: December 2, 1993