

*Exhibits 1 through 4*

YATES PETROLEUM CORPORATION  
 PENASCO DRAW WOLFCAMP POOL  
 T18S-R25E



OCK 1

SC

SCALE : 1" = 1000'

YATES PETROLEUM CORP.  
 BEFORE EXAMINER STOGNER  
 NMOCD CASE NO. 10898/Reopen  
 DATE: 09/07/95  
 EXHIBIT NO. 1

**PENASCO DRAW WOLFCAMP POOL**

**ATTEMPTED COMPLETIONS**

Well Name	Location	TD	Comp Date	Perfs	Field/ Pool	Cum MBO	Cum MMcf
Scout EH 3	34-18S-25E	9150	11/14/75	2214-2260	Penasco Draw SA Yeso	5	44
<i>Off well</i> Scout EH 5		5922	10/13/94	5674-5694	Penasco Draw Wolfcamp	7	20
Scout EH 5	34-18S-25E	9150	8/6/81	8847-8870	Boyd Morrow	0	357
		9150	1/1/94	5665-5678	Penasco Draw Wolfcamp	82	239
Scout EH 6	34-18S-25E	6202	6/19/95	5668-5680	Penasco Draw Wolfcamp	3	8
Rio Penasco OJ 1	34-18S-25E	9140	2/27/81	8850-8914	Boyd Morrow	0	232
		9140	11/1/94	5671-5677	Penasco Draw/Wolfcamp	0	0
		9140	4/26/95	8585-8590	Atoka	0	0.6
Rio Penasco RT 2	34-18S-25E	6200	2/17/94	P/A	Penasco Draw Wolfcamp	P/A	P/A

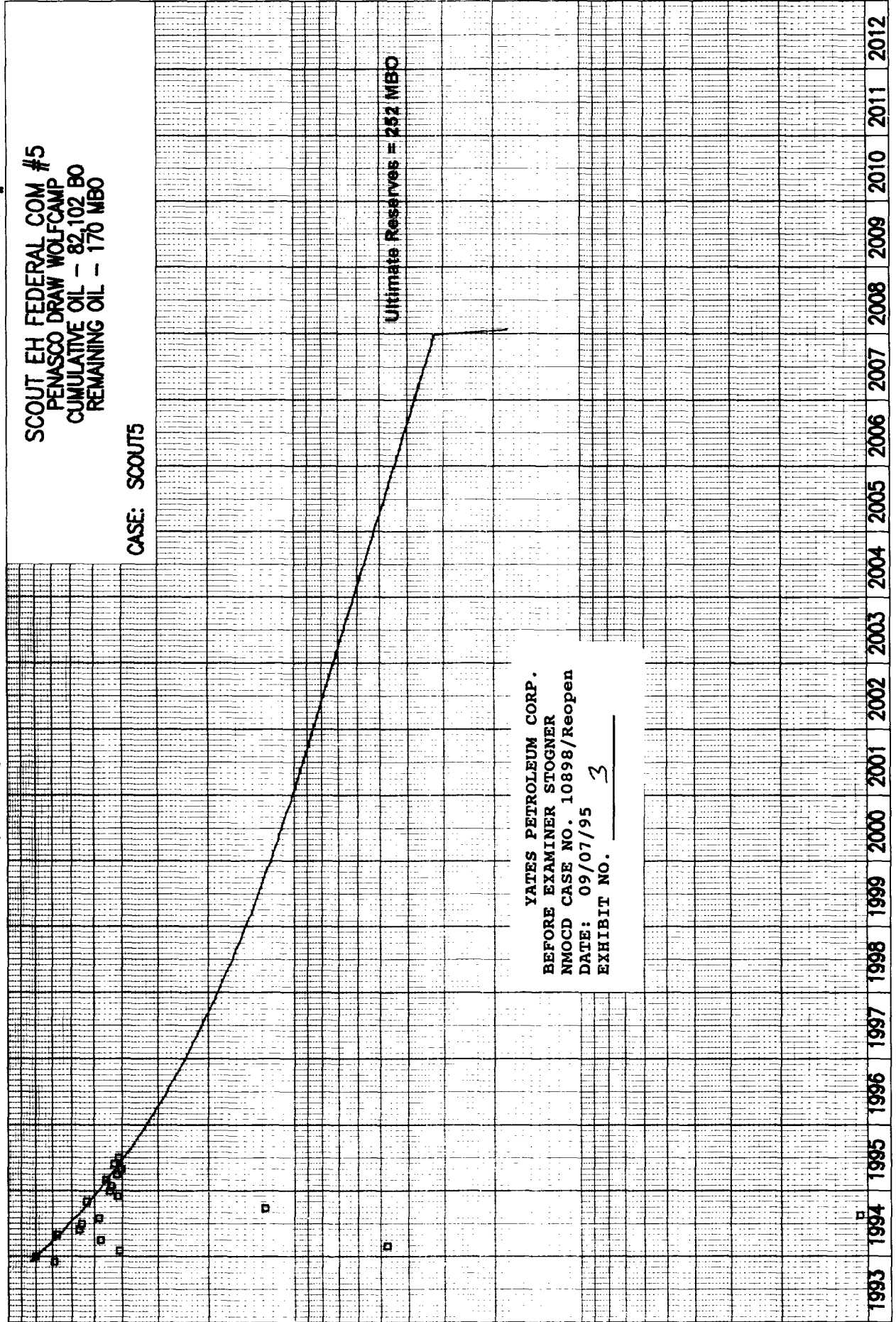
**YATES PETROLEUM CORPORATION**

YATES PETROLEUM CORP.  
BEFORE EXAMINER STOGNER  
NMOCD CASE NO. 10898/Reopen  
DATE: 09/07/95  
EXHIBIT NO. 2

Date: 9/06/95  
Time: 8:24:29

# PRODUCTION HISTORY

File: SCOUT5.DSF  
Get#:



CUMULATIVE GAS (MCF) =

SL 20 3 3

YEARS

DPC & A

82102.

CUMULATIVE OIL (BBL) =



**Drainage Area**  
**Scout EH Federal #5**  
**Wolfcamp Perforations 5665-5678**

Temperature = 117°F

Original Reservoir Pressure = 2445 psi from DST

Oil Gravity = 47°API

Gas Gravity = 1.081

Initial GOR = 1200 Scf/STBO

Dead-Oil Viscosity = 1.5 cp

Live-Oil Viscosity = 0.32 cp

$S_o(\Phi)h = 2.261$  from logs

$B_{oi} = 1.78$  Reservoir Barrel per STB from Standing

Recovery Factor ( $R_f$ ) = 0.17 from Wahl, Mullins and Elfrink

Oil Reserves ( $N_p$ ) = 252,000 STBO

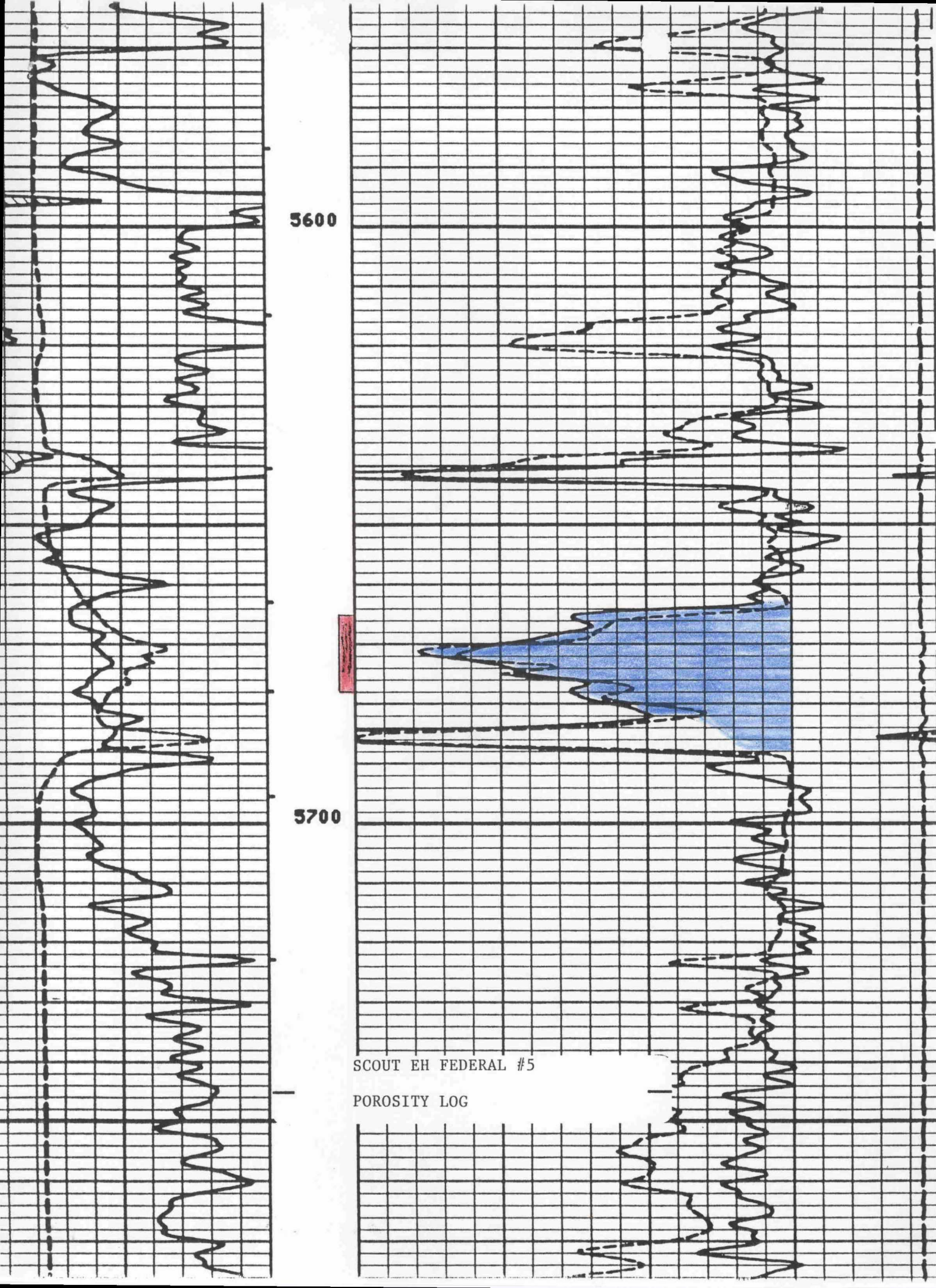
$$\begin{aligned} N_p &= \text{Recovery Factor} \times \text{OOIP} \\ 252,000 &= R_f (7758) Ah (\Phi) S_o / B_{oi} \\ 252,000 &= 0.17 (7758) A (2.261) / 1.78 \\ 252,000 &= 1675 A \end{aligned}$$

Drainage Area  $A = 252,000 / 1675 = 150$  Acres

YATES PETROLEUM CORP.  
BEFORE EXAMINER STOGNER  
NMOCD CASE NO. 10898/Reopen  
DATE: 09/07/95  
EXHIBIT NO. 4

Temp = 117 deg F  
 Rw = 0.130 at 70 F  
 Rw = 0.081 at reservoir temperature

Depth	Porosity	Rdeep	Sw	So	So*Phi
5663	0.010	500	1.000	0.000	0.000
5664	0.055	400	0.258	0.742	0.041
5665	0.110	175	0.195	0.805	0.089
5666	0.130	85	0.237	0.763	0.099
5667	0.132	73	0.252	0.748	0.099
5668	0.145	90	0.206	0.794	0.115
5669	0.157	85	0.196	0.804	0.126
5670	0.200	65	0.176	0.824	0.165
5671	0.237	60	0.155	0.845	0.200
5672	0.234	75	0.140	0.860	0.201
5673	0.200	85	0.154	0.846	0.169
5674	0.176	70	0.193	0.807	0.142
5675	0.190	72	0.176	0.824	0.157
5676	0.150	85	0.205	0.795	0.119
5677	0.130	60	0.282	0.718	0.093
5678	0.135	45	0.314	0.686	0.093
5679	0.133	55	0.288	0.712	0.095
5680	0.110	80	0.289	0.711	0.078
5681	0.082	110	0.330	0.670	0.055
5682	0.078	100	0.364	0.636	0.050
5683	0.070	70	0.485	0.515	0.036
5684	0.060	52	0.656	0.344	0.021
5685	0.050	50	0.803	0.197	0.010
5686	0.040	70	0.848	0.152	0.006
5687	0.025	160	0.898	0.102	0.003
5688	0.010	500	1.000	0.000	0.000
					<u>2.261</u>

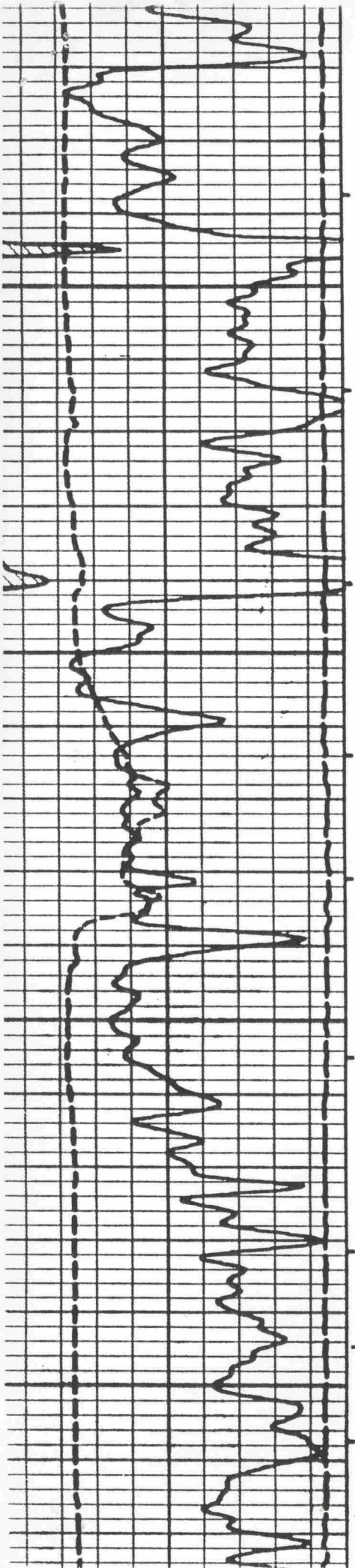


5600

5700

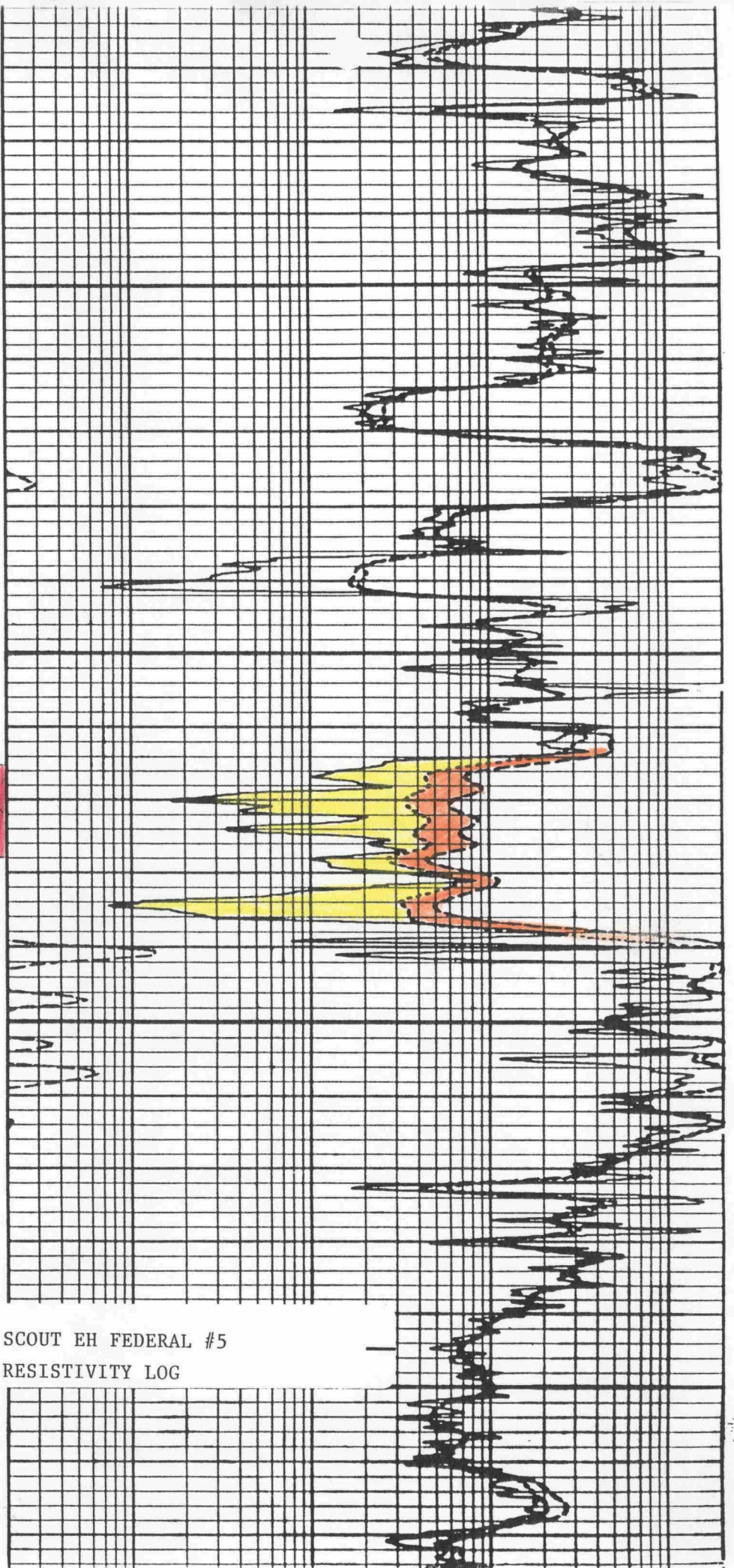
SCOUT EH FEDERAL #5

POROSITY LOG



5600

5700



SCOUT EH FEDERAL #5  
RESISTIVITY LOG