

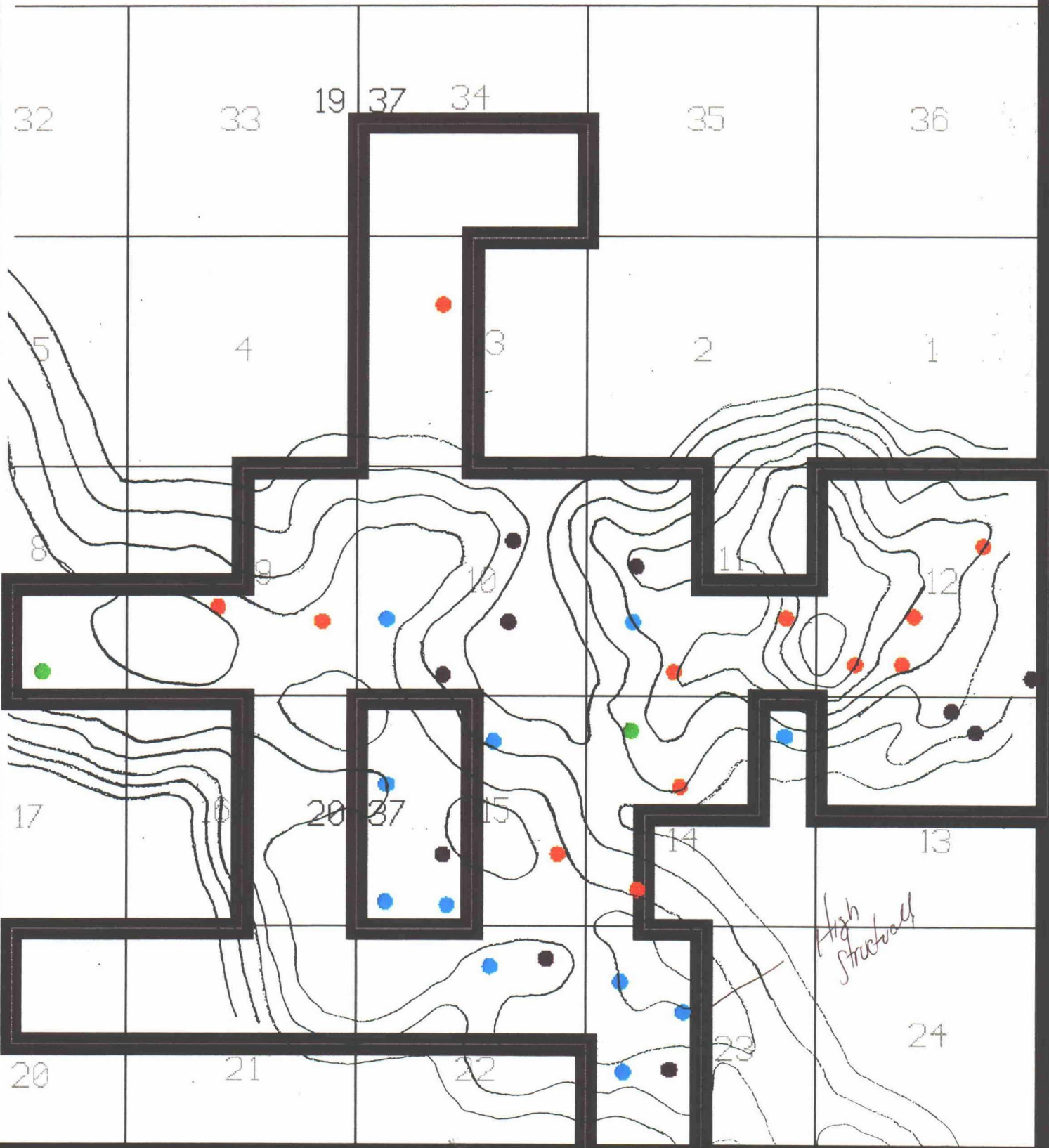
**BEFORE THE
OIL CONSERVATION DIVISION
Santa Fe, New Mexico**

MONUMENT TUBB FIELD



ENGR: DOROTHY BRELIH
DRAWN BY: DARRELL CARRIGER DATE: 5/9/94

● GOR > 20000 ● 10000 < GOR < 20000 ● 4000 < GOR < 10000 ● GOR < 4000



**BEFORE THE
OIL CONSERVATION DIVISION**
Santa Fe, New Mexico

Case No. 10984 Exhibit No. 3

Submitted by: Texaco Exploration and
Production Inc.

Hearing Date: May 26, 1994