

B' EAST

2640'

1320'

2400'

-3100'

3700'

-3200'

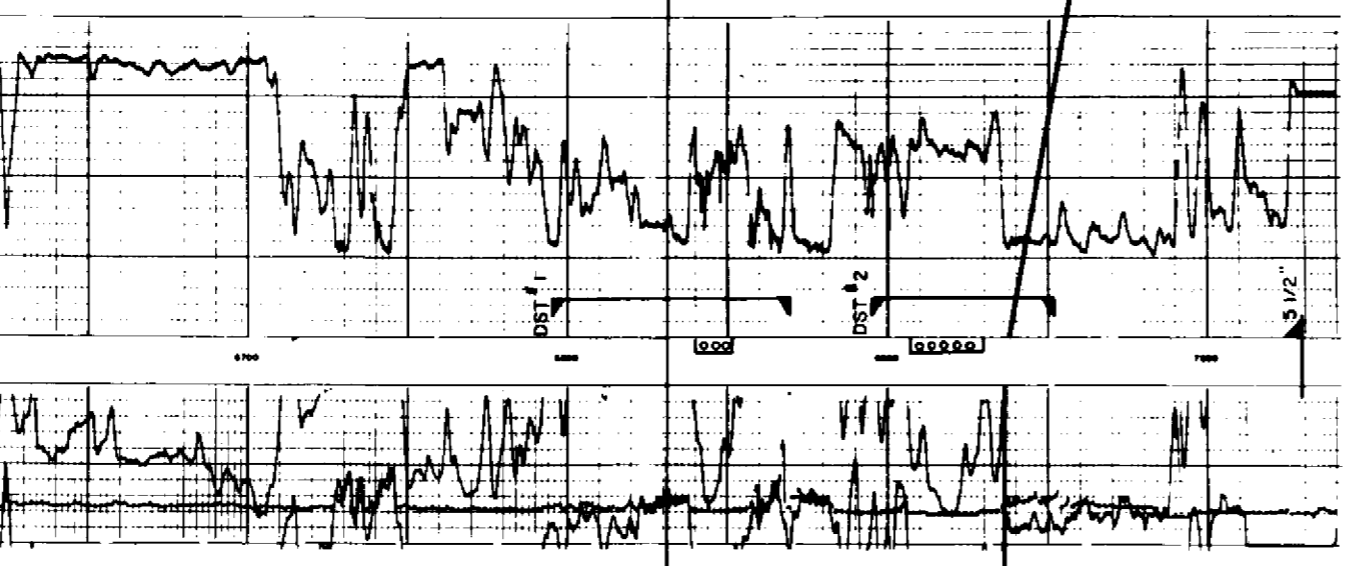
-3300'

-3400'

-3500'

B WEST

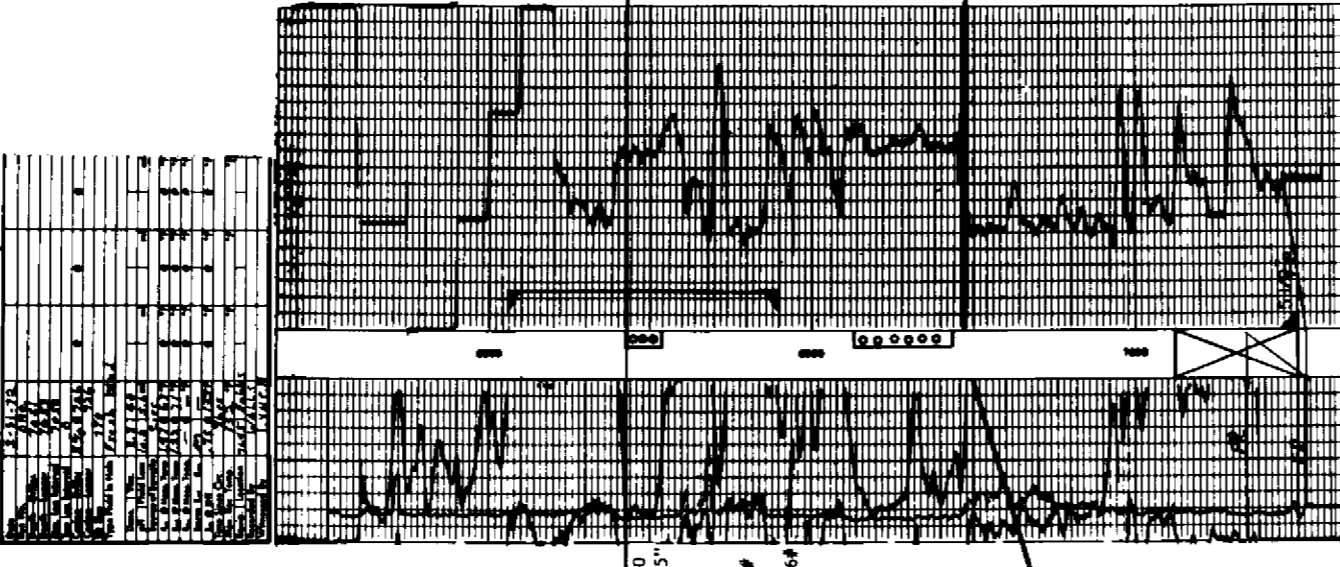
COMPANY - BLACK RIVER CORPORATION	
WELL - 1320'	
DATE - 11/21/72	
LOGGING COMPANY - SIPS, WILLIAMSON & RUNYAN, INC.	
LOG NO. - 1320'	
LOG DATE - 11/21/72	
LOG TIME - 11:00 AM	
LOG LOCATION - 1320'	
LOG DEPTH - 1320'	
LOG TYPE - 1320'	
LOG SCALE - 1320'	
LOG SPEED - 1320'	
LOG TEMPERATURE - 1320'	
LOG PRESSURE - 1320'	
LOG RESISTIVITY - 1320'	
LOG GRAVITY - 1320'	
LOG DENSITY - 1320'	
LOG SOUNDING - 1320'	
LOG CORRECTIONS - 1320'	
LOG REMARKS - 1320'	



DST #1 6795-6870
Op 3" Gas 3.130
16.471 MCF/D
4.538 MCF/D
Rec 300' GASCON
90" ESTP 2991#
120" ESTP 2991#
HP 3077-3056

DST #2 6885-6932
Op 4.5" GAS 2.1"
16.471 MCF/D
SFP 1450#
Rec 80' COGN
60" ESTP 2909#
90" ESTP 2909#
120" ESTP 2909#
HP 3249-3228

COMPANY - BLACK RIVER CORPORATION	
WELL - 2640'	
DATE - 11/21/72	
LOGGING COMPANY - SIPS, WILLIAMSON & RUNYAN, INC.	
LOG NO. - 2640'	
LOG DATE - 11/21/72	
LOG TIME - 11:00 AM	
LOG LOCATION - 2640'	
LOG DEPTH - 2640'	
LOG TYPE - 2640'	
LOG SCALE - 2640'	
LOG SPEED - 2640'	
LOG TEMPERATURE - 2640'	
LOG PRESSURE - 2640'	
LOG RESISTIVITY - 2640'	
LOG GRAVITY - 2640'	
LOG DENSITY - 2640'	
LOG SOUNDING - 2640'	
LOG CORRECTIONS - 2640'	
LOG REMARKS - 2640'	



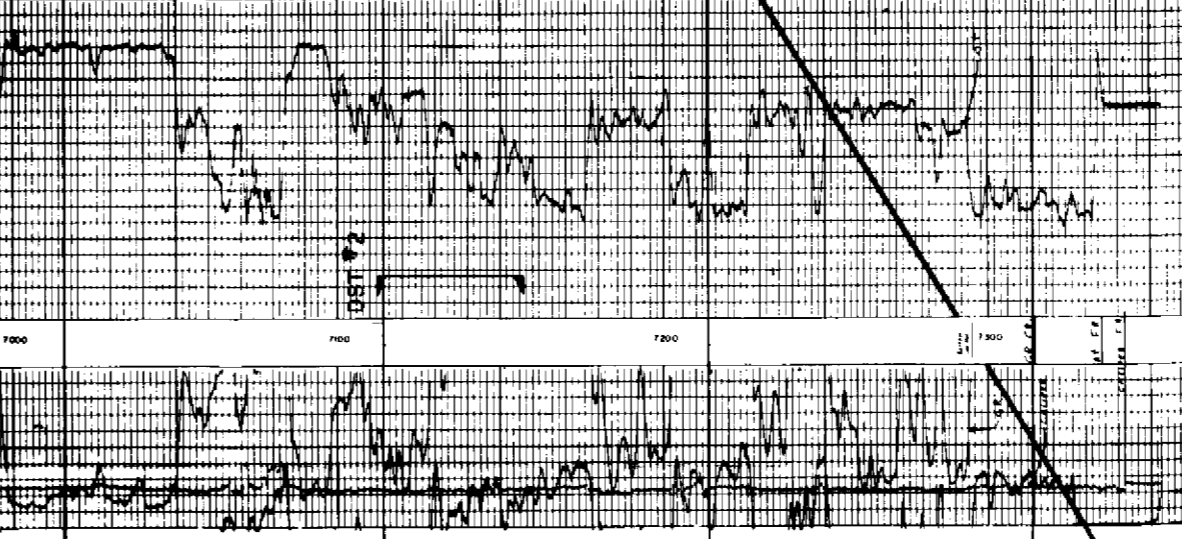
DST #1 6800-90
Op 1" Gas 5"
6.250 MCF/D
24/64" SFP 200#
24/64" SFP 40#
90" ESTP 2991#
120" ESTP 2991#
HP 3077-3056

DST #3 6942-55
Op 1" Gas 5"
6.250 MCF/D
24/64" SFP 200#
24/64" SFP 40#
90" ESTP 2991#
120" ESTP 2991#
HP 3077-3056

DST #4 7004-42
Op 3" Gas 5"
24/64" SFP 100#
24/64" SFP 100#
24/64" SFP 100#
Rec 215' COG
1" 2869#
2" 2869#

DST #5 7115-3137
Op 1" Gas 5"
6.250 MCF/D
24/64" SFP 200#
24/64" SFP 40#
90" ESTP 2991#
120" ESTP 2991#
HP 3077-3056

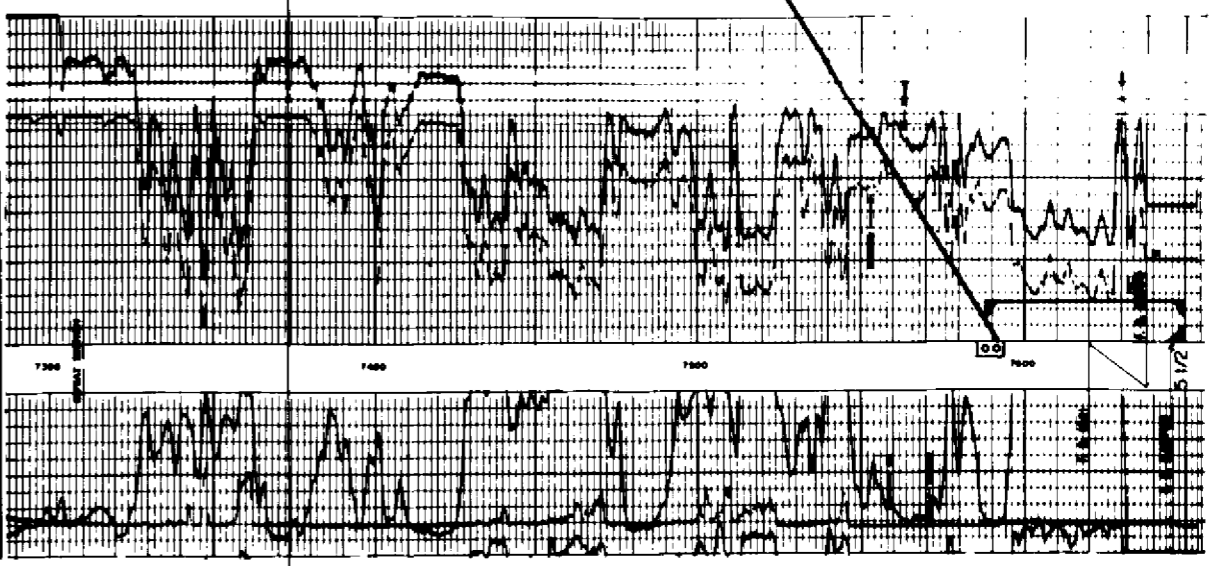
COMPANY - BLACK RIVER CORPORATION	
WELL - 3700'	
DATE - 11/21/72	
LOGGING COMPANY - SIPS, WILLIAMSON & RUNYAN, INC.	
LOG NO. - 3700'	
LOG DATE - 11/21/72	
LOG TIME - 11:00 AM	
LOG LOCATION - 3700'	
LOG DEPTH - 3700'	
LOG TYPE - 3700'	
LOG SCALE - 3700'	
LOG SPEED - 3700'	
LOG TEMPERATURE - 3700'	
LOG PRESSURE - 3700'	
LOG RESISTIVITY - 3700'	
LOG GRAVITY - 3700'	
LOG DENSITY - 3700'	
LOG SOUNDING - 3700'	
LOG CORRECTIONS - 3700'	
LOG REMARKS - 3700'	



DST #1 7004-42
Op 3" Gas 5"
24/64" SFP 100#
24/64" SFP 100#
24/64" SFP 100#
Rec 215' COG
1" 2869#
2" 2869#

DST #2 7115-3137
Op 1" Gas 5"
6.250 MCF/D
24/64" SFP 200#
24/64" SFP 40#
90" ESTP 2991#
120" ESTP 2991#
HP 3077-3056

COMPANY - BLACK RIVER CORPORATION	
WELL - 4772'	
DATE - 11/21/72	
LOGGING COMPANY - SIPS, WILLIAMSON & RUNYAN, INC.	
LOG NO. - 4772'	
LOG DATE - 11/21/72	
LOG TIME - 11:00 AM	
LOG LOCATION - 4772'	
LOG DEPTH - 4772'	
LOG TYPE - 4772'	
LOG SCALE - 4772'	
LOG SPEED - 4772'	
LOG TEMPERATURE - 4772'	
LOG PRESSURE - 4772'	
LOG RESISTIVITY - 4772'	
LOG GRAVITY - 4772'	
LOG DENSITY - 4772'	
LOG SOUNDING - 4772'	
LOG CORRECTIONS - 4772'	
LOG REMARKS - 4772'	



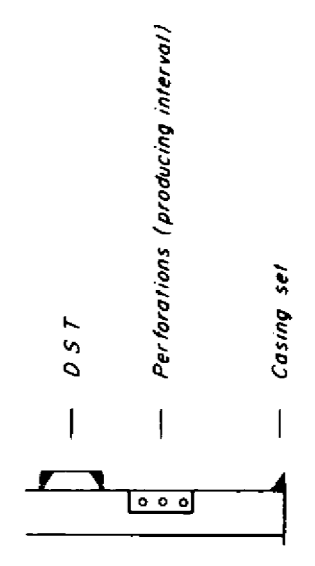
DST #1 7988-650
Op 1" Gas 5"
6.250 MCF/D
24/64" SFP 200#
24/64" SFP 40#
90" ESTP 2991#
120" ESTP 2991#
HP 3077-3056

DST #2 7650-6270
Op 1" Gas 5"
6.250 MCF/D
24/64" SFP 200#
24/64" SFP 40#
90" ESTP 2991#
120" ESTP 2991#
HP 3077-3056

EXHIBIT THE
CITIZEN'S COMMISSION
Case No. 4767
Submitted by BLACK RIVER CORP
Hearing Date 11/21/72

BLACK RIVER CORPORATION
SUB - SEA
CROSS SECTION B - B'
WEST - EAST
WASHINGTON RANCH (Morrow) FIELD
EDDY COUNTY, NEW MEXICO
11-20-72
SIPES, WILLIAMSON & RUNYAN, INC.
Consulting Engineers
Midland, Texas

LEGEND



BK EXHIBIT NO. 4
4