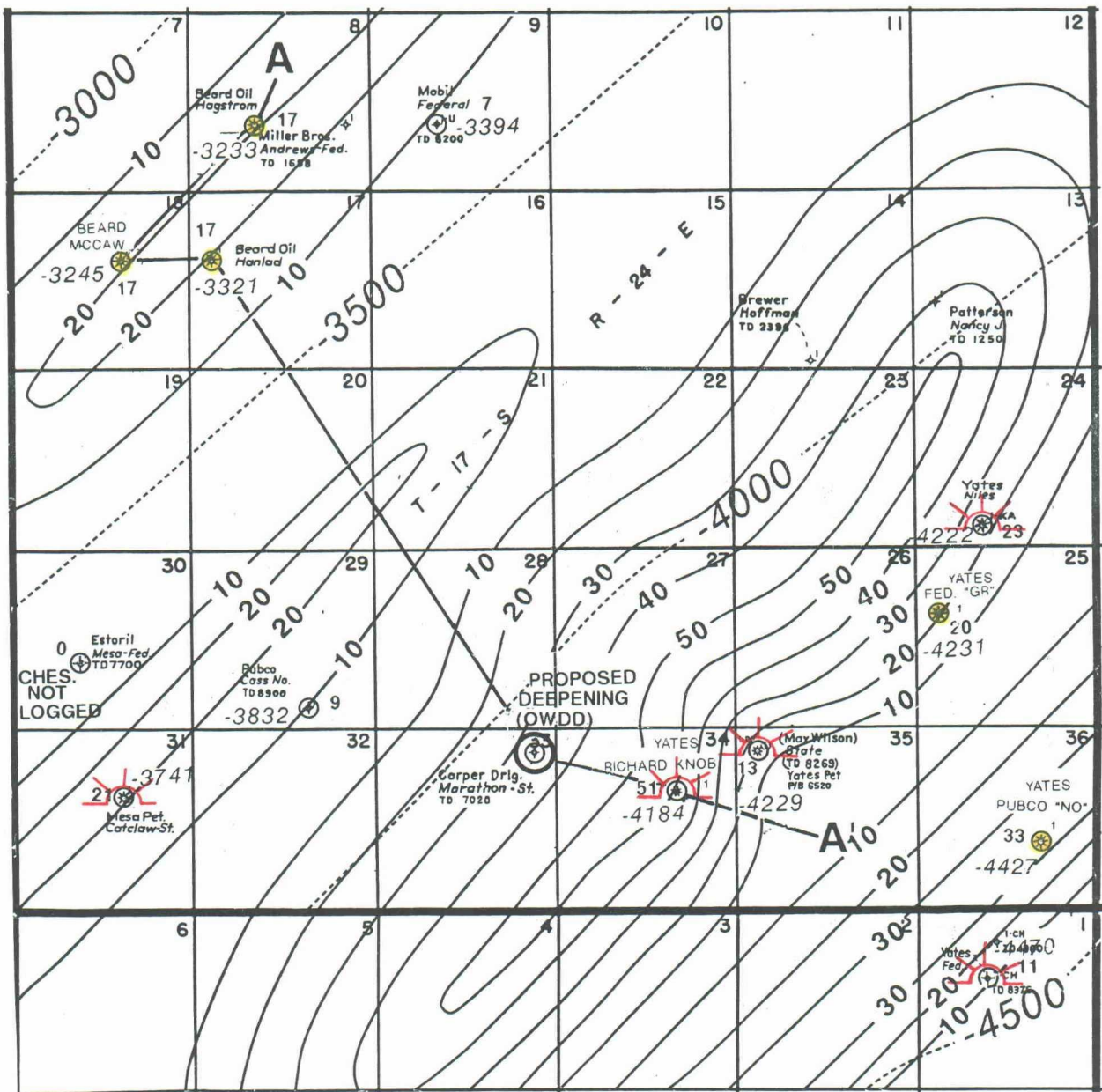








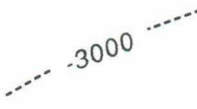
Exhibits 1 Through 4 Complete Set

11 33	D.E. Blackmar 53944	J.G. Natis 43513	Yates Pet 10-1-82 16780	Beard Oil 4298	Yates Pet 10-1-82 7805			
		J.E. Myers 4-1-93 54832	6	5				
		U.S.	U.S.	U.S.				
7.75 12	Yates Pet. 0559513 HBP	AboPet 1/2 Yates Pet 0559512 HBP	Yates Pet 10-1-82 16780	M.T. Garrett 9-14-87	Beard Oil HBP 4298	Santa Fe Ener 12-1-91 42132	Beard Oil 12-1-91 42132	M.N. Brown 5-1-93 55856
	12							
		U.S.	U.S.	U.S.	U.S.	U.S.	U.S.	U.S.
7.75 12	Yates Pet. 0559513 HBP	AboPet 1/2 Yates Pet 0559512 HBP	Yates Pet 10-1-82 16780	M.T. Garrett 9-14-87	Beard Oil HBP 4298	Santa Fe Ener 12-1-91 42132	Beard Oil 12-1-91 42132	M.N. Brown 5-1-93 55856
		U.S.	U.S.	U.S.	U.S.	U.S.	U.S.	U.S.
7.75 12	Yates Pet. 0559513 HBP	AboPet 1/2 Yates Pet 0559512 HBP	Yates Pet 10-1-82 16780	M.T. Garrett 9-14-87	Beard Oil HBP 4298	Santa Fe Ener 12-1-91 42132	Beard Oil 12-1-91 42132	M.N. Brown 5-1-93 55856
		U.S.	U.S.	U.S.	U.S.	U.S.	U.S.	U.S.
7.75 12	Yates Pet. 0559513 HBP	AboPet 1/2 Yates Pet 0559512 HBP	Yates Pet 10-1-82 16780	M.T. Garrett 9-14-87	Beard Oil HBP 4298	Santa Fe Ener 12-1-91 42132	Beard Oil 12-1-91 42132	M.N. Brown 5-1-93 55856
		U.S.	U.S.	U.S.	U.S.	U.S.	U.S.	U.S.

YATES PETROLEUM CORPORATION
 Case No. 9628
 3/29/89 Examiner Hearing
 Exhibit No. 1



LEGEND

- 
 Basal Penn Penetrations
- 
 Total Thickness of Sands in Basal Penn with API GR < 50
- 
 Structural Datum, Top of Chester LS
- 
 Basal Penn Gas Producer;
 Basal Penn = Lower Canyon thru Morrow
- 
 Basal Penn Gas Show by DST or thru Perfs
- 
 Isoloth of Basal Penn Sands
 C.I. = 10 feet
- 
 Structure on top of Chester Lime;
 Best Marker closest to Basal Penn sediments
 C.I. = 500 feet

YATES PETROLEUM CORPORATION
 Case No. 9628
 3/29/89 Examiner Hearing
 Exhibit No. 2