

EXPLORATION SERVICES INC.

P. O. DRAWER 90

MIDLAND, TEXAS 79702

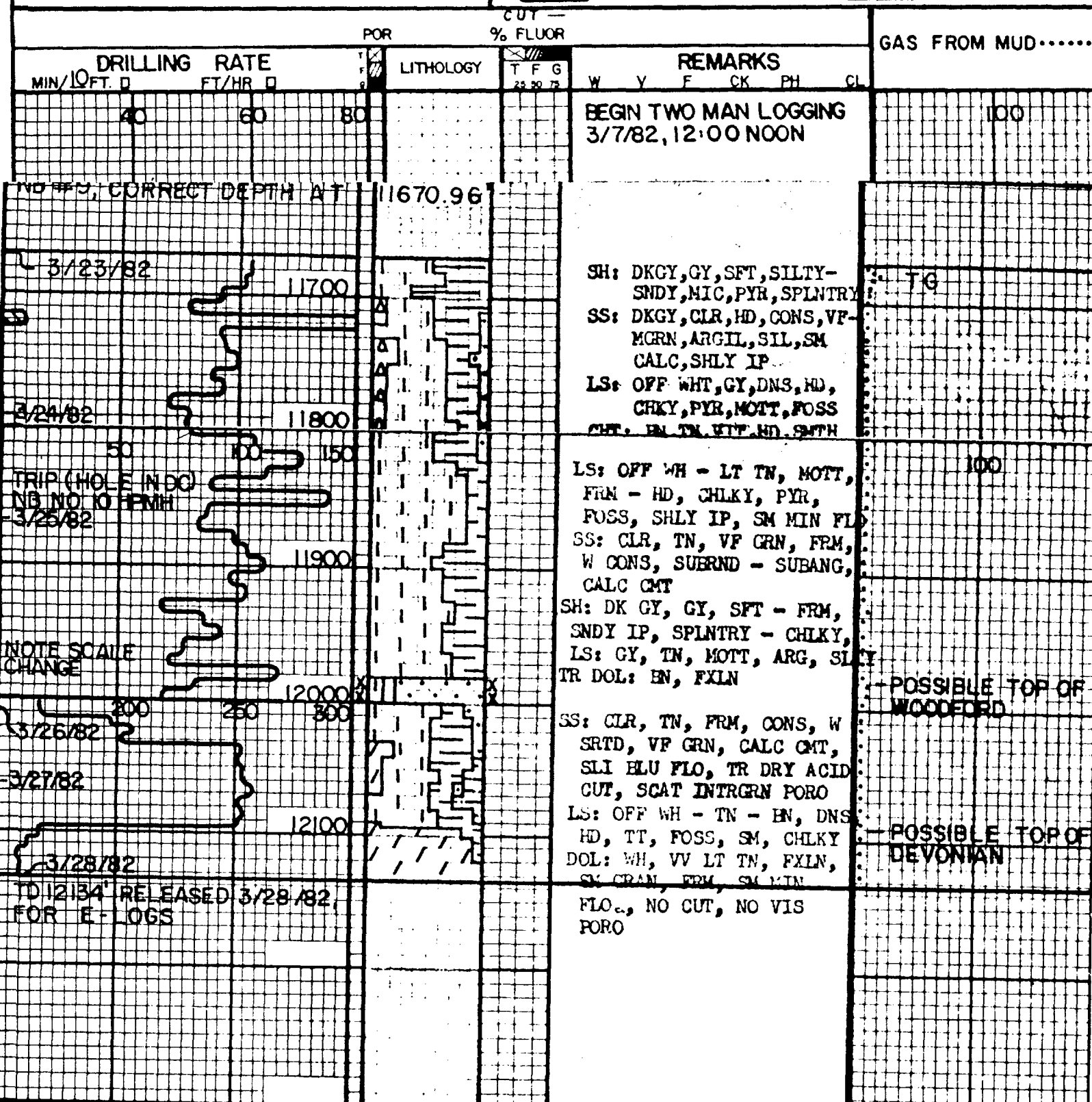
HYDROCARBON ANALYSIS LOG



COMPANY	UNC TEXAS INC.		
WELL	STATE 10 **1		
FIELD			
COUNTY	LEA	STATE N.M.	
LOCATION	1660' FNL 1980' FNL SEC 10 T12 R38		
LOG BY	M.W. TRIBBLE	J. HURLEY	UNIT LTD 12
DEPTH LOGGED FROM	8980'	TO 12134'	
DATE LOGGED FROM	3/7/82	TO 3/28/82	

ELEV. N R - NO RETURN
 N B - NEW BIT C O - CIRCULATED OUT
 D C B - DIAMOND CORE BIT D S T - DRILL STEM TEST
 S T SLOPE TEST CLT - CARBIDE LAG

	SAND		CHERT
	LIMESTONE		CONGLOMERATE
	DOLOMITE		SANDY SHALE
	SHALE		GRANITE
	ANHYDRITE		GRANITE WASH



BEFORE EXAMINER STOGNER

Oil Conservation Division

~~NEABURG~~ Exhibit No. 5

Case No. 9644

SECTION 09 TOWNSHIP 12 South RANGE 38 East

D Not State - - Acreage	C Not State - - Acreage	B Not State - - Acreage	A Not State - - Acreage
E Not State - - Acreage	F Not State - - Acreage	G Not State - - Acreage	H Not State - - Acreage
L Not State - - Acreage	K Not State - - Acreage	J OPEN UNK 68	I OPEN UNK 68
M Not State - - Acreage	N Not State - - Acreage	O OPEN UNK 68	P OPEN UNK 68

REMARKS

A
B
G
H
C
D
E
F
K
L
M
N
I
J
O
P

-
-
-
-
-
-
-
-
-
-
-
-

SECTION 10 TOWNSHIP 12 South RANGE 38 East

D NEARBURG PETRO UNK 06 90 L68382-5	C NEARBURG PETRO NOI 06 90 L68382-5	B YATES 08 92 V-2382	A YATES 08 92 V-2382
E NEARBURG PETRO UNK 06 90 L68382-5	F NEARBURG PETRO UNK 06 90 L68382-5	G YATES 08 92 V-2382	H YATES 08 92 V-2382
L NEARBURG UNK 06 90 L68382-6	K NEARBURG UNK 06 90 L68382-6	J NEARBURG UNK 06 90 L68382-6	I YATES 08 92 V-2382
M TXD PROD CORP UNK 06 90 L68382-3	N TXD PROD CORP UNK 06 90 L68382-3	O NEARBURG UNK 06 90 L68382-6	P YATES 08 92 V-2382

REMARKS

A
B
C
D
E
F
G
H
I
J
K
L
M
N
O
P