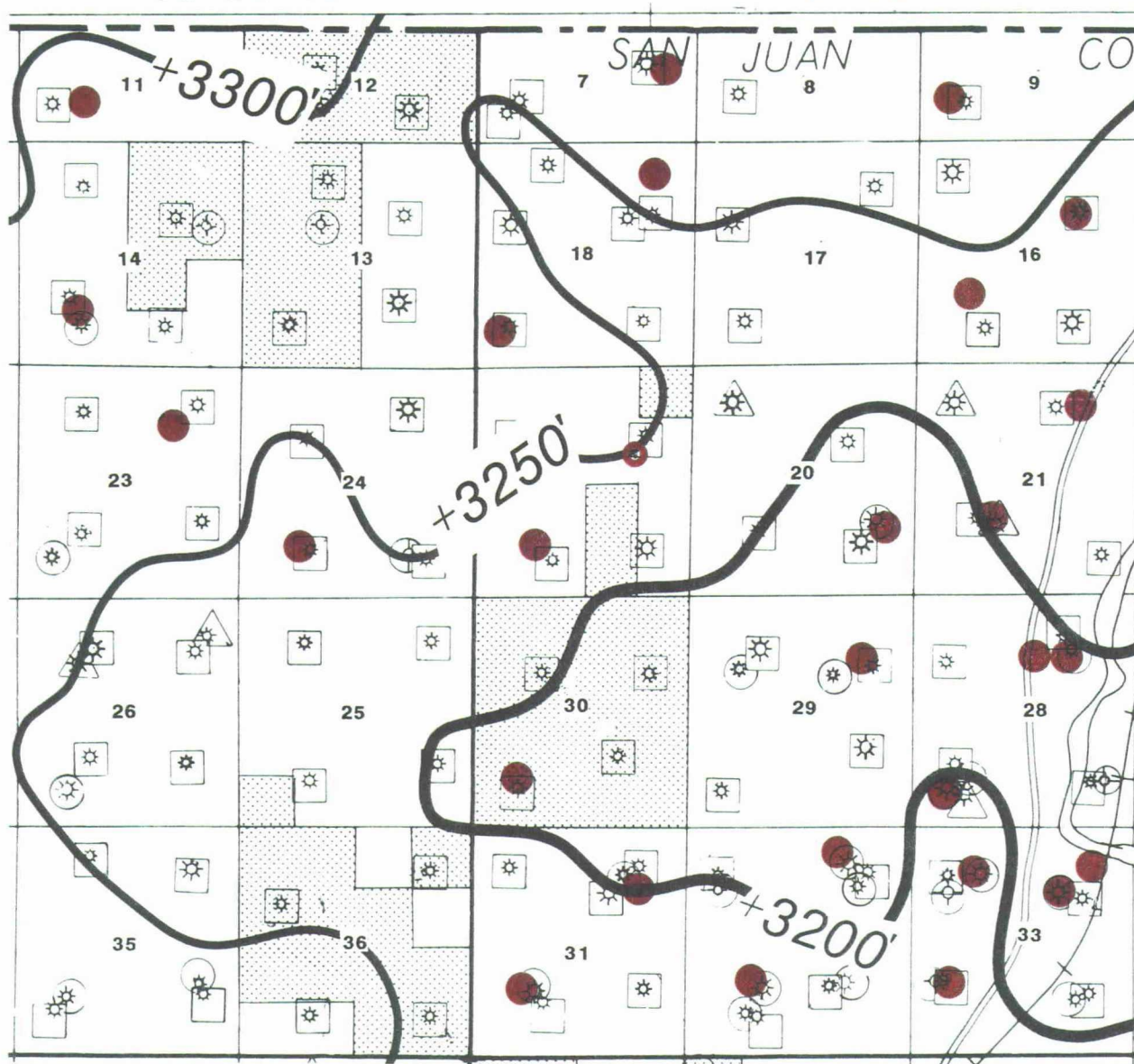


R 11 W

R 10 W



T
32
N

- Proposed Well Location
- Fruitland Coal Completion

Exhibit 4



MESA LIMITED PARTNERSHIP

SAN JUAN BASIN

Structure: Base Fruitland Formation
C.I. = 50'

APPLICATION FOR COMPULSORY POOLING
CASE NO. 9989

June 27, 1990

FC Decker Primo Com. #2

2025' FNL, 1330' FEL

Section 19, T32N-R10W

San Juan County, New Mexico