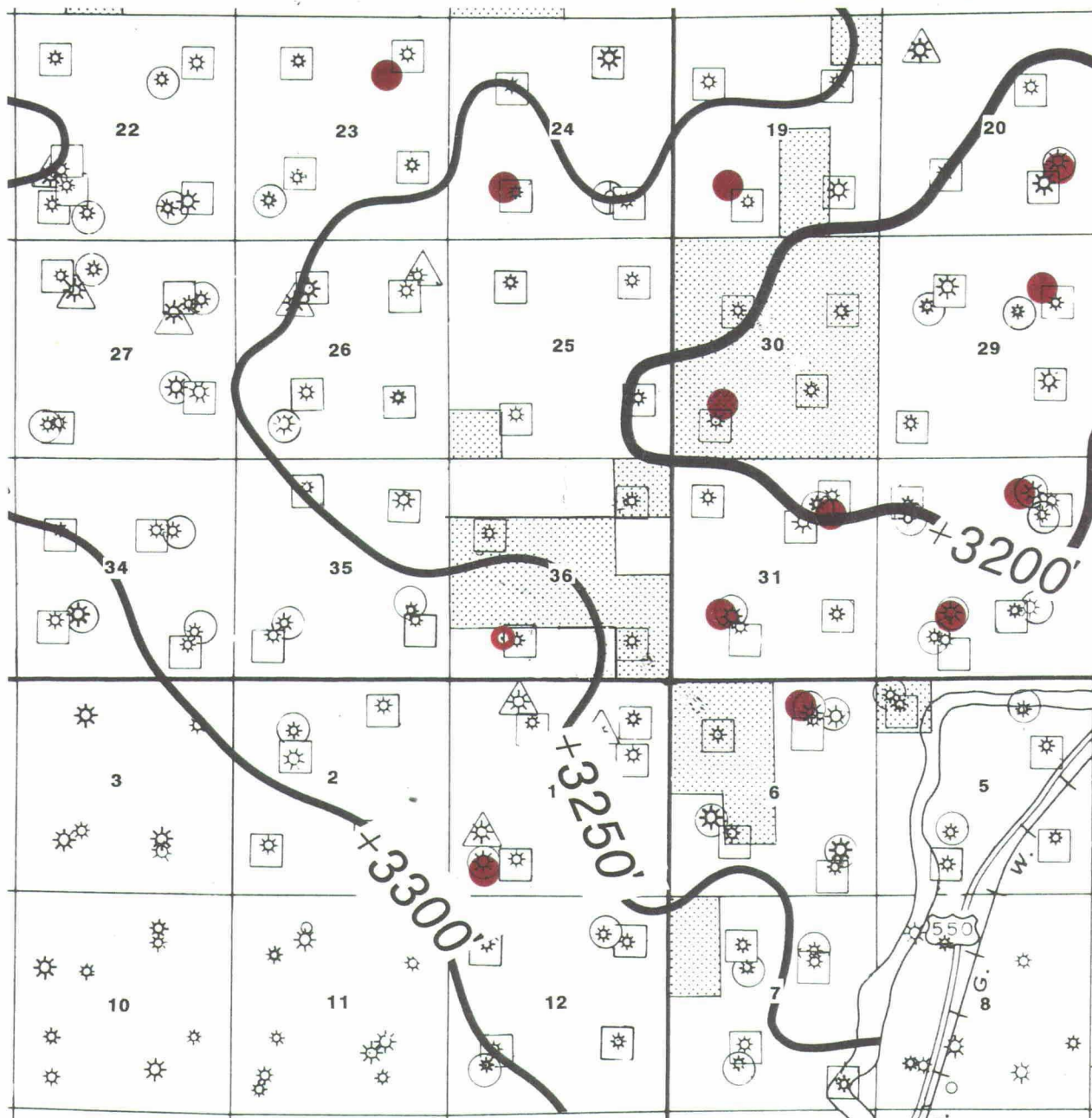


R 11 W

R 10 W

T  
32  
N

T  
31  
N



- Proposed Well Location
- Fruitland Coal Completion

Exhibit 4



MESA LIMITED PARTNERSHIP

SAN JUAN BASIN

Structure: Base Fruitland Formation  
C.I. = 50'

APPLICATION FOR COMPULSORY POOLING  
CASE NO. 9992

June 27, 1990

FC State Com. #13

970' FSL, 1235' FWL

Section 36, T32N-R11W

San Juan County, New Mexico