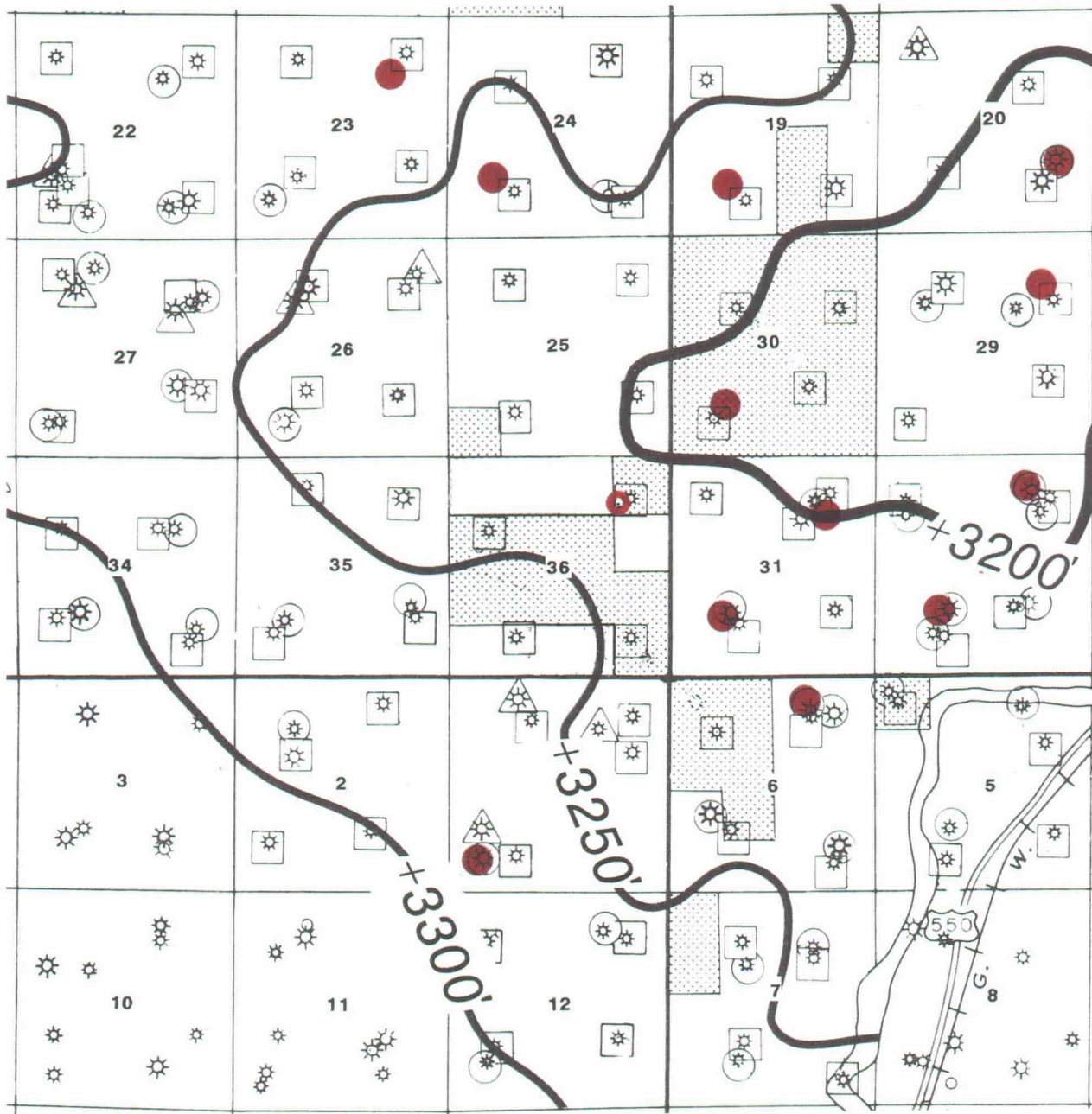


R 11 W

R 10 W

T
32
N

T
31
N



- Proposed Well Location
- Fruitland Coal Completion

Exhibit 4



MESA LIMITED PARTNERSHIP

SAN JUAN BASIN

Structure: Base Fruitland Formation
C.I. = 50'

APPLICATION FOR COMPULSORY POOLING

CASE NO. 9993

June 27, 1990

FC State Com. #12

1155' FNL, 1255' FEL

Section 36, T32N-R11W

San Juan County, New Mexico