

Submit to Appropriate District Office
 State Leases - 4 copies
 Fee Leases - 3 copies

State of New Mexico
 Energy, Minerals and Natural Resources Department

Form C-102
 Revised 1-1-89

OIL CONSERVATION DIVISION

P.O. Box 2088

Santa Fe, New Mexico 87504-2088

DISTRICT I
 P.O. Box 1980, Hobbs, NM 88240

DISTRICT II
 P.O. Drawer DD, Artesia, NM 88210

DISTRICT III
 1000 Rio Brazos Rd., Aztec, NM 87410

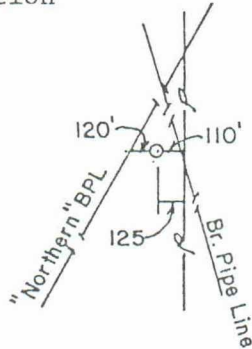
WELL LOCATION AND ACREAGE DEDICATION PLAT

All Distances must be from the outer boundaries of the section

| | | | | | |
|---|---|----------------------|----------------------------------|---------------|---------------------------------|
| Operator DOYLE HARTMAN | | | Lease State "A" Com | | Well No. 5 |
| Unit Letter Q | Section 5 | Township 21 South | Range 36 East | County Lea | |
| Actual Footage Location of Well: 1650 feet from the South line and 845 feet from the East line | | | | | |
| Ground level Elev. 3586.2 | Producing Formation Yates - 7R - Queen | | Pool Eumont (Y-7R-QN) Pro Gas | | Dedicated Acreage: 280 Acres |

- Outline the acreage dedicated to the subject well by colored pencil or hatchure marks on the plat below.
- If more than one lease is dedicated to the well, outline each and identify the ownership thereof (both as to working interest and royalty).
- If more than one lease of different ownership is dedicated to the well, have the interest of all owners been consolidated by communitization, unitization, force-pooling, etc.?
 Yes No If answer is "yes" type of consolidation Force Pooling
 If answer is "no" list the owners and tract descriptions which have actually been consolidated. (Use reverse side of this form if necessary.)
 No allowable will be assigned to the well until all interests have been consolidated (by communitization, unitization, forced-pooling, or otherwise) or until a non-standard unit, eliminating such interest, has been approved by the Division.

Detail Inset
 State "A" Com No. 5
 Location

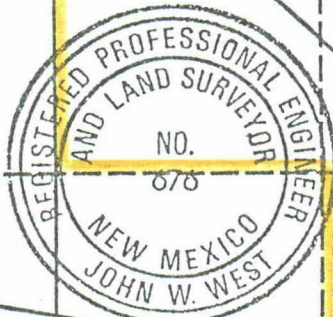


Proposed - Hartman
 State "A" Com No. 5
 Infill Eumont Well
 1650' FSL & 845' FEL
 Section 5, T-21-S,
 R-36-E

Proposed State "A"
 Com Proration Unit
 N/2 SE/4, SE/4 SE/4
 Section 5,
 NE/4 Section 8

Section 5, T-21-S, R-36-E

Section 8, T-21-S, R-36-E



OPERATOR CERTIFICATION

I hereby certify that the information contained herein is true and complete to the best of my knowledge and belief.

Signature

Printed Name
 Michael Stewart

Position
 Engineer

Company
 Doyle Hartman

Date
 6-6-90

SURVEYOR CERTIFICATION

I hereby certify that the well location shown on this plat was plotted from field notes of actual surveys made by me or under my supervision, and that the same is true and correct to the best of my knowledge and belief.

Date Surveyed
 June 4, 1990

Signature & Seal of Professional Surveyor

Certificate No. JOHN W. WEST, 676
 RONALD J. EIDSON, 3239

Existing - Hartman
 State "A" Com No. 4
 (State "A" No. 4)
 660' FNL & 660' FEL
 Section 8, T21S, R36E

BEFORE EXAMINER CATANACH
 Oil Conservation Division

Exhibit No. 14
 Case No. 9994

