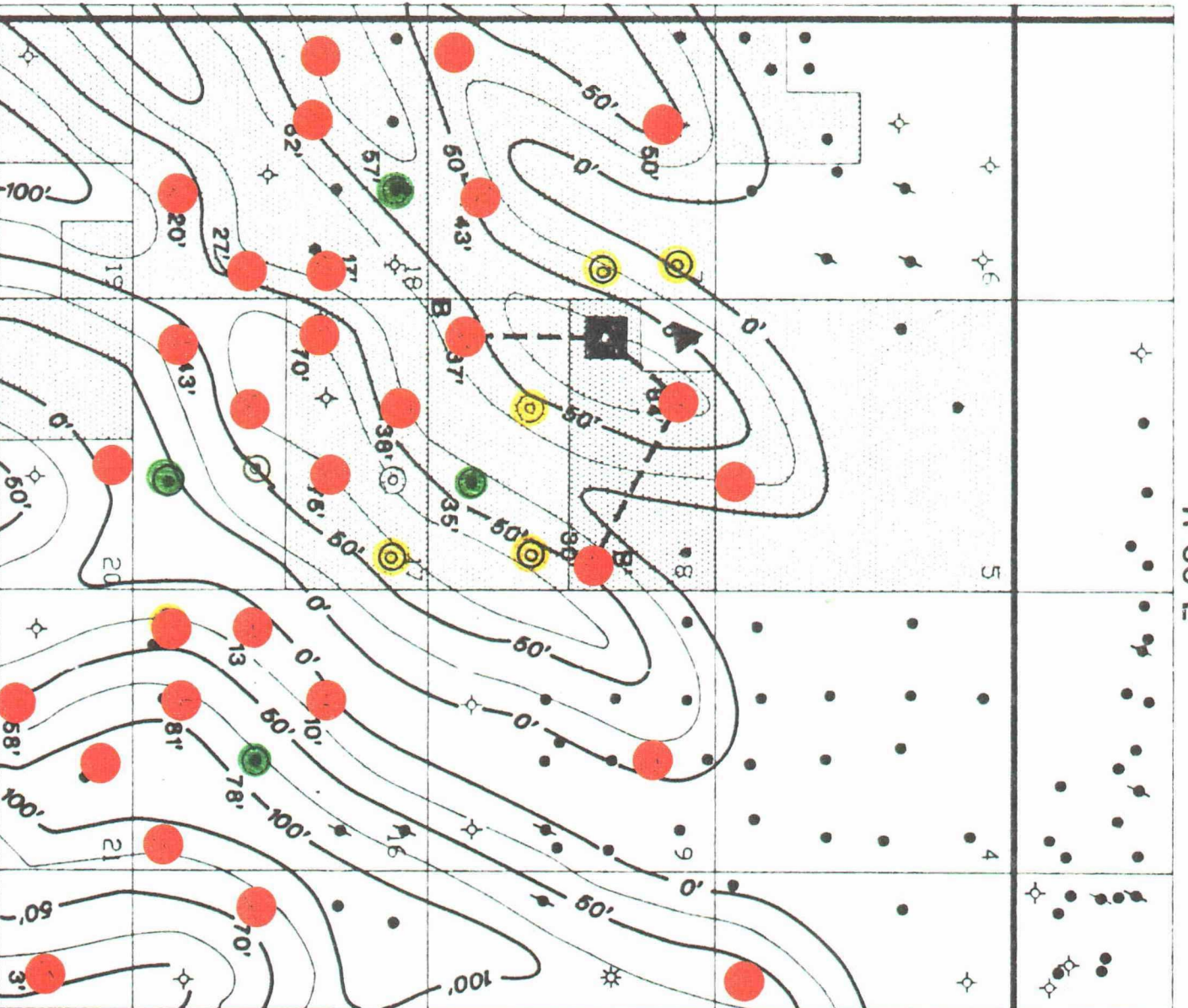


R 33 E



▲ PROPOSED LOCATION  
(HANLEY PET.)

■ SFEOP,LP INTEREST ACREAGE

■ PROPOSED LOCATION  
(SFEOP,LP)

● INDUSTRY LOCATION 5

● "AE" PRODUCER 4

● "AE" DRY HOLE 29

T 18 S

Before the  
OIL CONSERVATION COMMISSION

Santa Fe, New Mexico

Case No. 102110219 Exhibit No. 12

Submitted By: Hanley

Hearing Date: 5-9-91

Santa Fe Energy Operating Partners, LP.

PENALTA BASIN DISTRICT

MIDLAND, TEXAS



LEA SOUTH AREA  
**KACHINA PROSPECT**  
LEA COUNTY, NEW MEXICO

ISOPACH MAP  
NET CLEAN CARBONATE  
WOLFCAMP "AE" CARBONATE

ON 5 40 APIU

GEOLOGIST: J. THOMA  
SCALE: 1" = 3000'

C.L.: 25'  
DATE: 11-29-90

FILE: 2-1-7