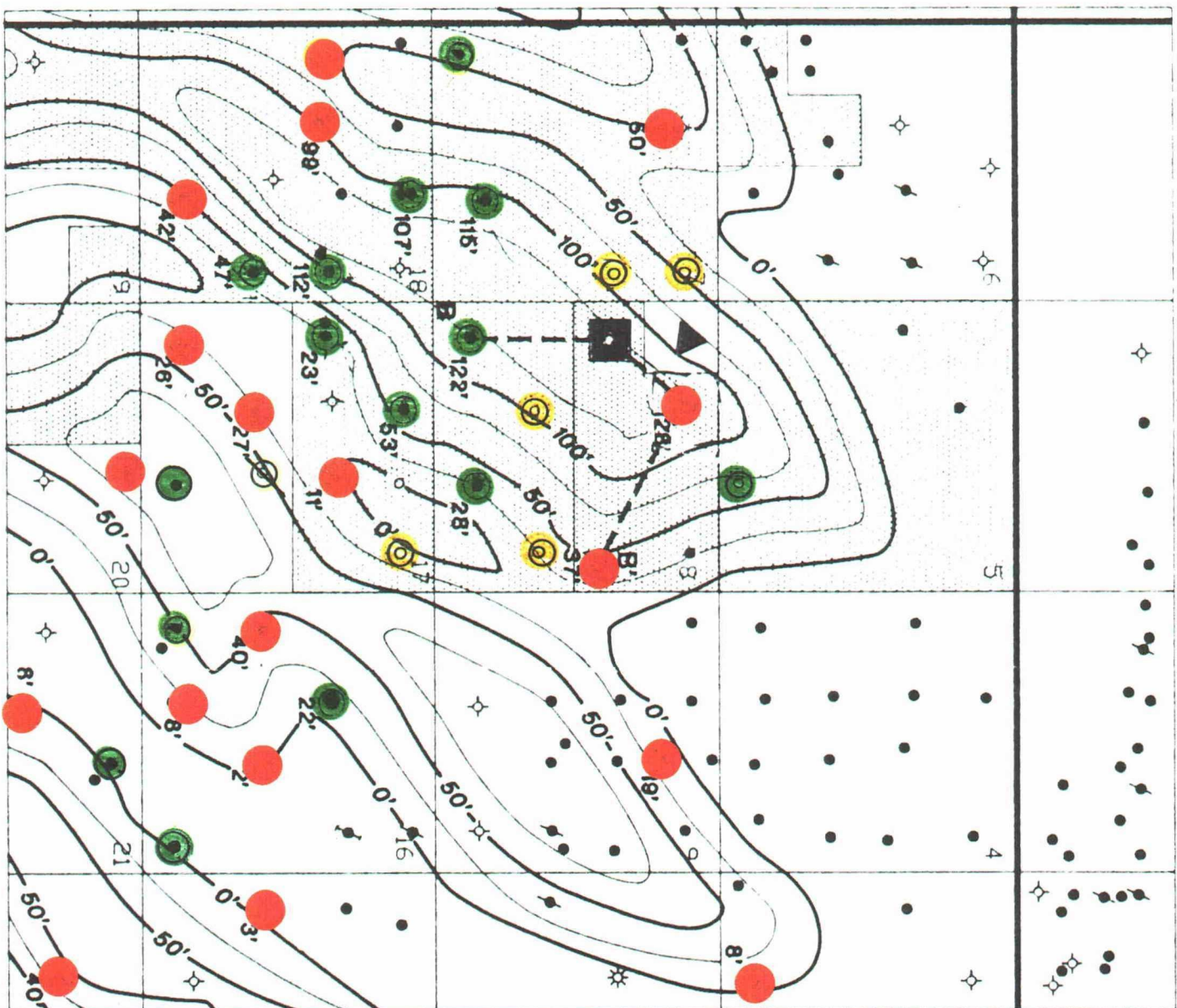


R 33 E



T 18 S

PROPOSED LOCATION
(HANLEY PET.)

SFEOP, LP INTEREST ACREAGE

PROPOSED LOCATION
(SFEOP, LP)

INDUSTRY LOCATION 5

"AF" PRODUCERS 15

"AF" DRY HOLE 18

Before the
OIL CONSERVATION COMMISSION
Santa Fe, New Mexico
Case No. 101110129 Exhibit No. 13
Submitted By: HANLEY
Hearing Date: 5-9-91


Santa Fe Energy Operating Partners, LP.
PERMIAN BASIN DISTRICT
INDIAN, TEXAS

LEA SOUTH AREA
KACHINA PROSPECT
LEA COUNTY, NEW MEXICO

ISOPACH MAP
NET CLEAN CARBONATE
LOWER WOLFCAMP "AF" CARBONATE
GR 5.40 APLU
GEOLOG BY: J. THOMA
SCALE: 1" = 3000'
C.I.L. 25'
DATE: 11-29-90

FILE: 2-1-7