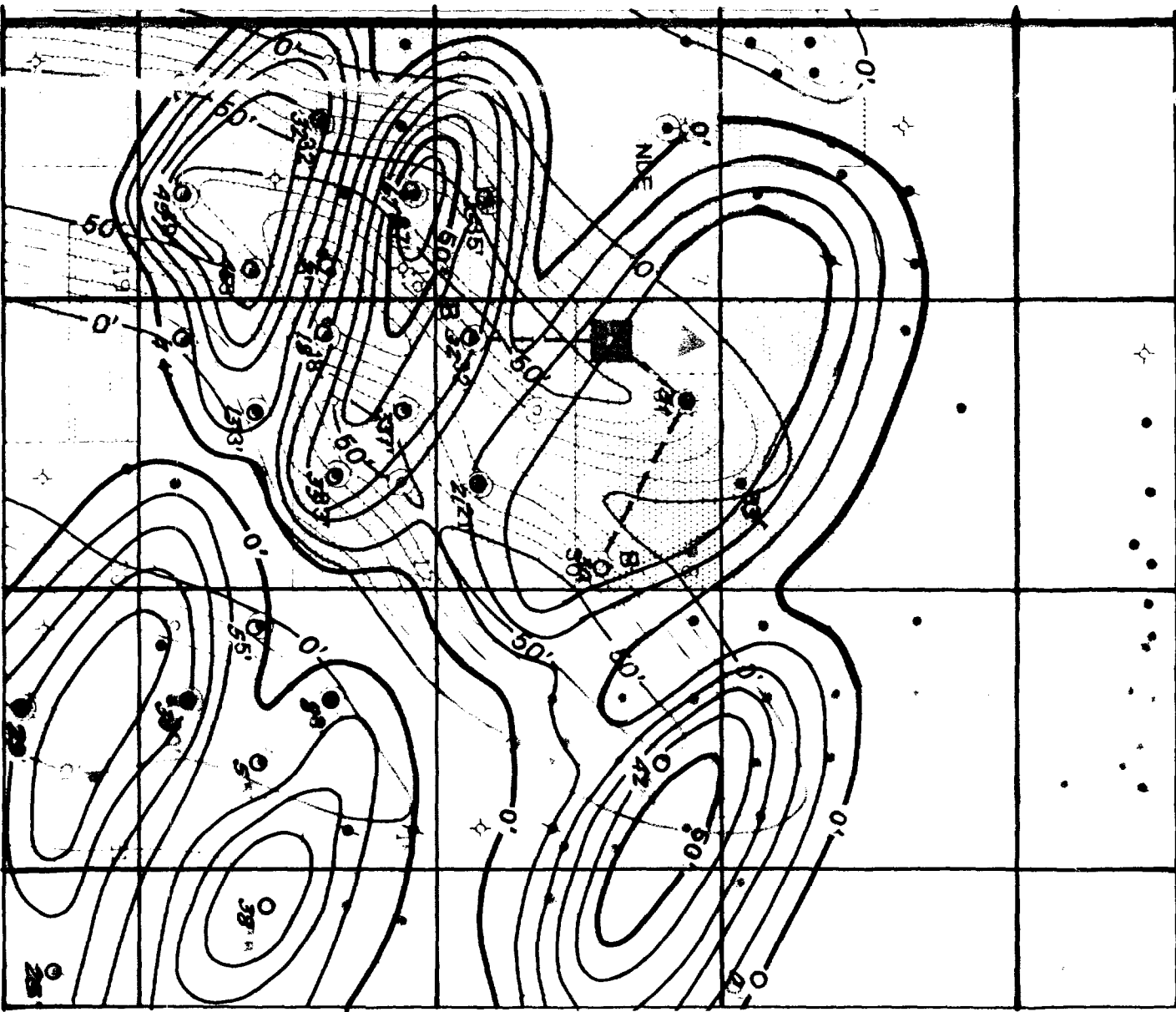


R 33 E



PROPOSED LOCATION
(HANLEY PET.)

NET ACREAGE

LOCATION
(S.P., L.P.)

RY LOCATION

PRODUCERS

COMMISSION

10/11/1979

Submitted by: HANLEY
Hearing Date: 5-9-91



Santa Fe Energy Operating Partners, LP.
PERMIAN BASIN DISTRICT
MIDLAND, TEXAS

LEA SOUTH AREA
KACHINA PROSPECT

ISOPACH MAP
NET CLEAN CARBONATE
WOLFCAMP 40' CARBONATE

DECT. BY: J. THOMAS
SCALE: 1" = 100'