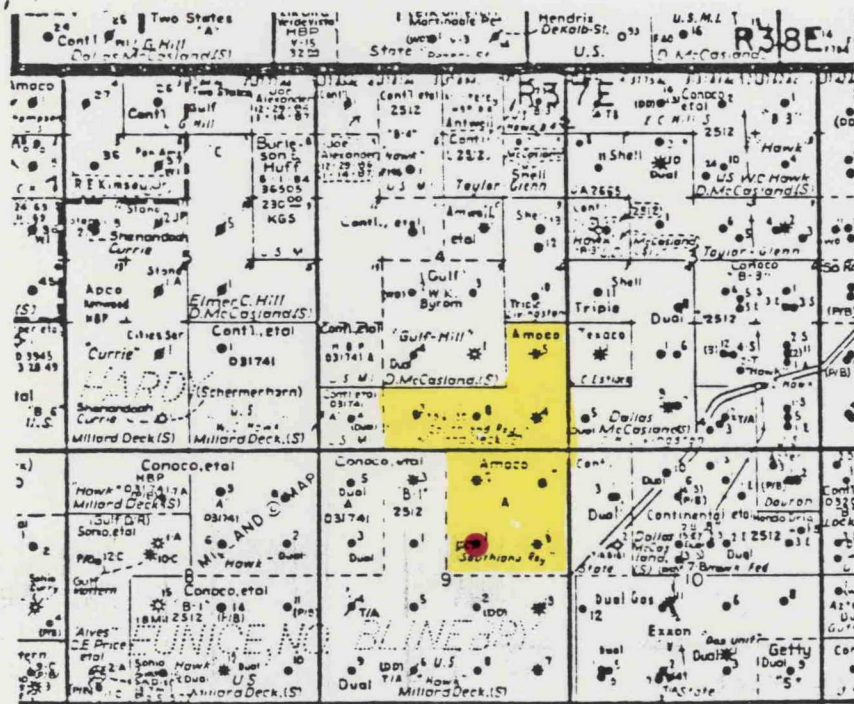


Location Map Southland Royalty "A" Lease Well No. 1



BEFORE EXAMINER STAMETS OIL CONSERVATION DIVISION	
EXHIBIT NO.	<u>6</u>
CASE NO.	<u>8181</u>
Submitted by	<u>Amoco</u>
Hearing Date	<u>5-9-84</u>