

A

SOUTHWEST

UTPC
Jicarilla J#12E
SW SW 35-26N-5W



UTPC

Jicarilla H#6Y
SW SW 20-26N-4W



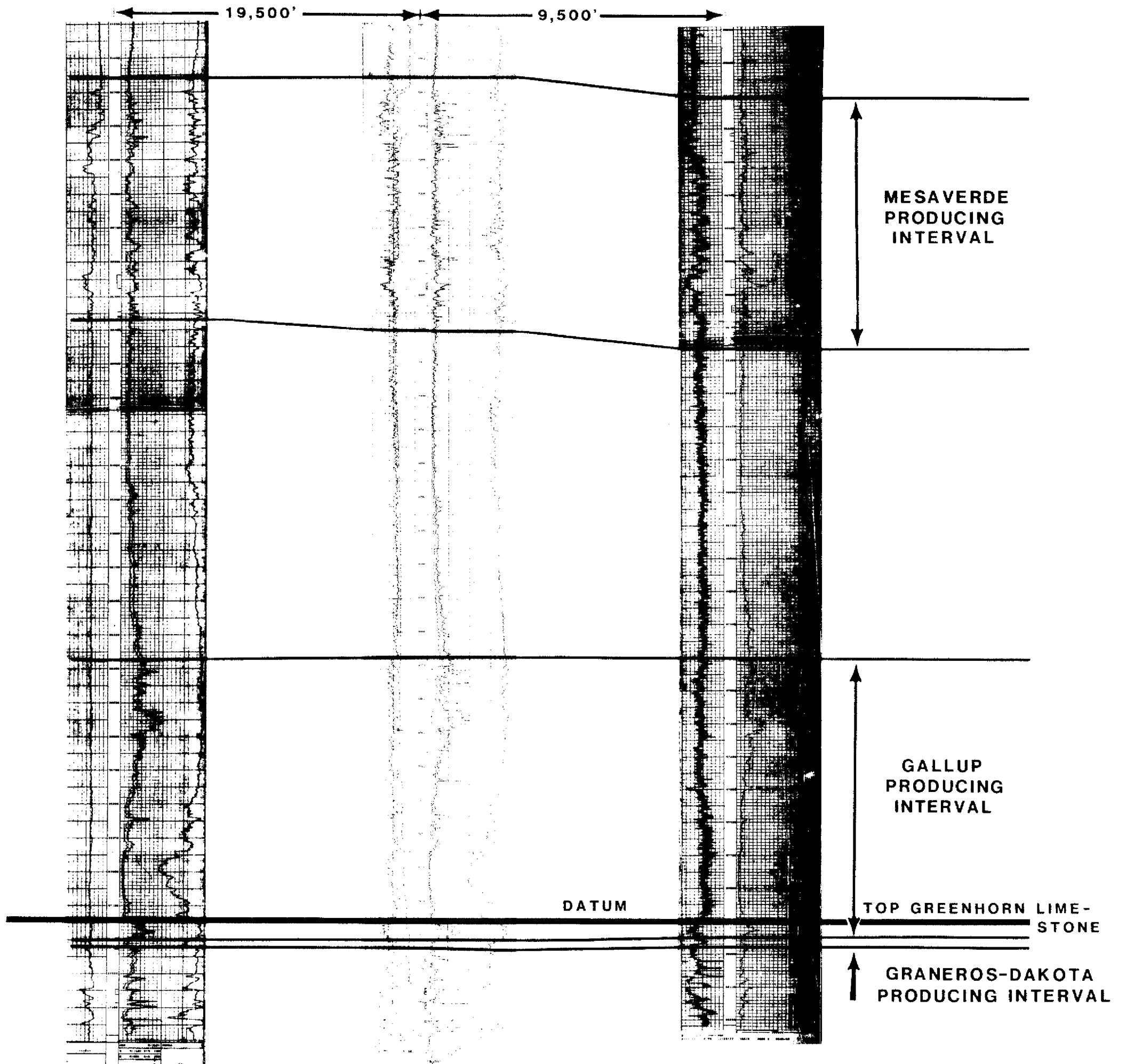
UTPC

Jicarilla H#9
NE NE 17-26N-4W



A'

NORTHEAST



BEFORE EXAMINER STAMETS
OIL CONSERVATION DIVISION
UTPC EXHIBIT NO. 7
CASE NO. 8184 & 8185
Submitted by HERRINGTON
Hearing Date 5-9-84

UNICON						
San Juan Basin JICARILLA AREA Rio Arriba County, New Mexico						
CROSS-SECTION A-A'						
WESTERN DIVISION						
GEOL.	DATE	GEOPH.	DATE	LARD	DATE	WELLS
R.S.R.	5-84					