

B

NORTHWEST

B'

SOUTHEAST

UTPC
Jicarilla G#6M
NW NW 2-26N-5W



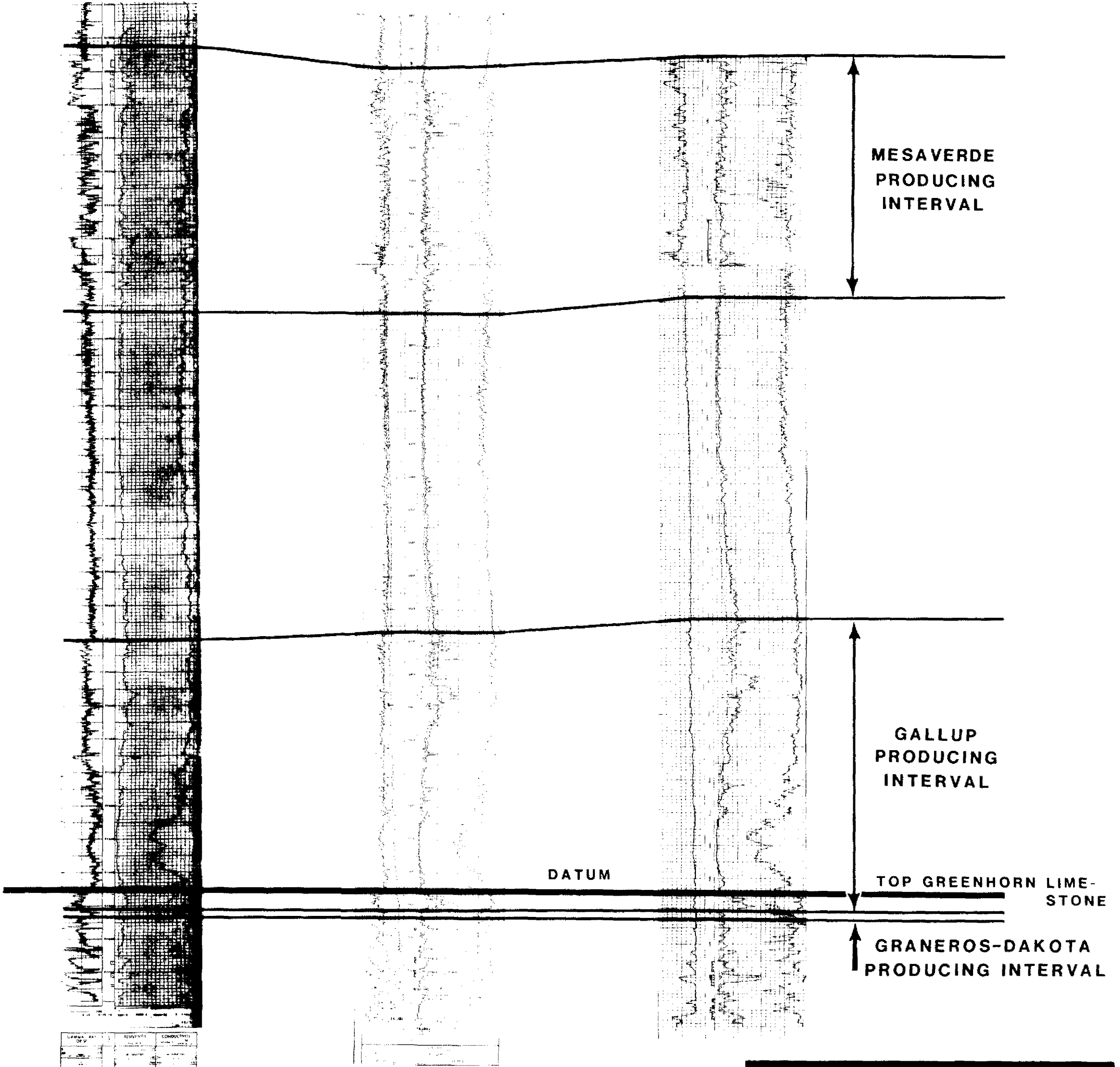
UTPC
Jicarilla H#6Y
SW SW 20-26N-4W



UTPC
Jicarilla F#1
NW SW 27-26N-4W



25,100' 11,500'



BEFORE EXAMINER STAMETS
OIL CONSERVATION DIVISION
UTPC EXHIBIT NO. B
CASE NO. 8184 & 8185
Submitted by HERRINGTON
Hearing Date 5-9-89

UNICON					
San Juan Basin JICARILLA AREA Rio Arriba County, New Mexico					
CROSS-SECTION B-B'					
WESTERN DIVISION					
GEOL. R.S.R.	DATE 5-84	GEOPH.	DATE	LAND	DATE WELLS