

A

SOUTHWEST

A'

NORTHEAST

UTPC
Jicarilla J#12E
SW SW 35-26N-5W



UTPC
Jicarilla H#6Y
SW SW 20-26N-4W

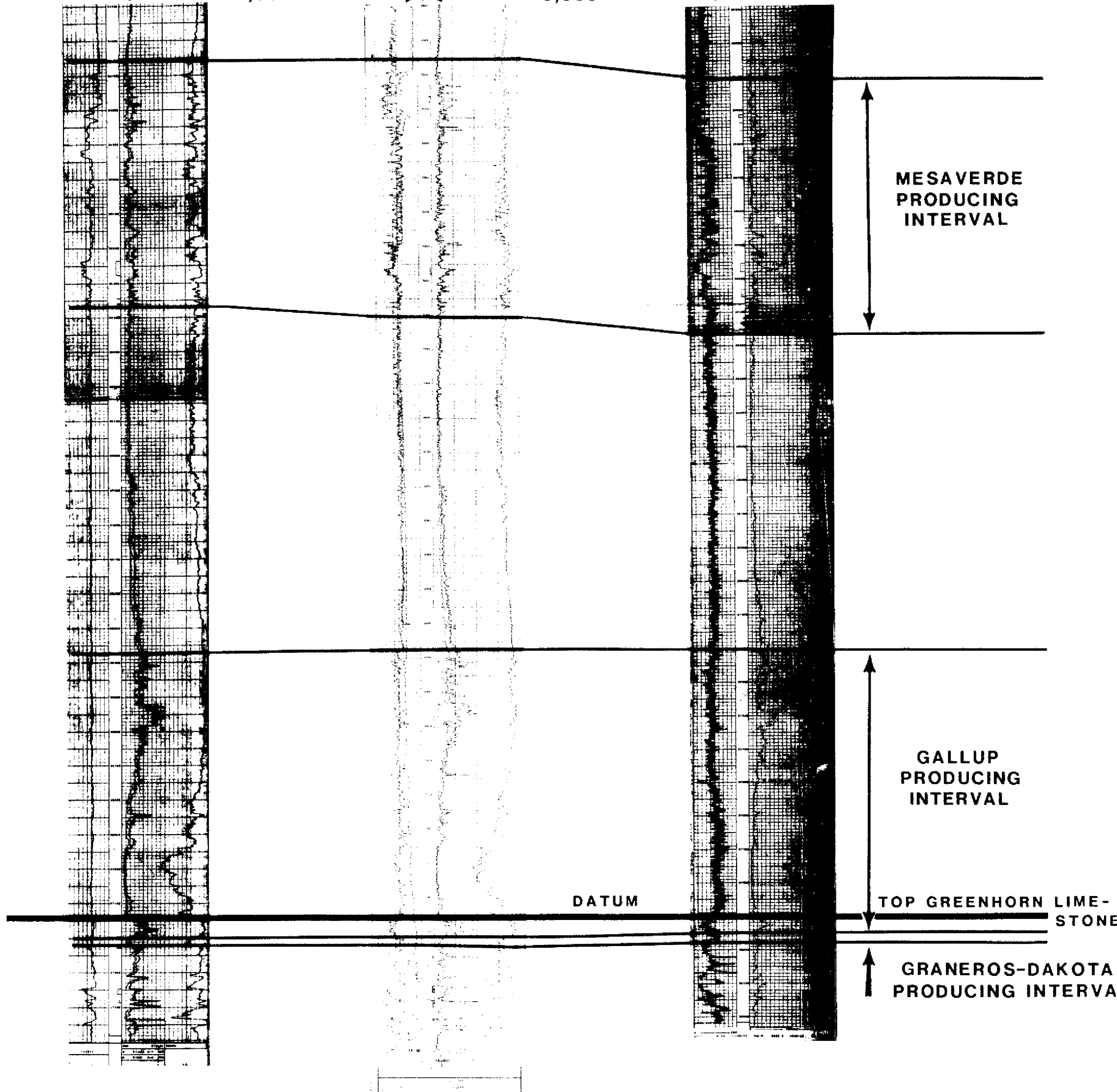


UTPC
Jicarilla H#9
NE NE 17-26N-4W



19,500'

9,500'



UNICON						
San Juan Basin JICARILLA AREA Rio Arriba County, New Mexico						
CROSS-SECTION A-A'						
WESTERN DIVISION						
GEOLOGICAL	DATE	GEOGRAPHICAL	DATE	LAND	DATE	WELLS
R.S.R.	5-84					